

# KD-Validated Anti-ARID1A Recombinant Rabbit Monoclonal Antibody



**Catalog #: 61580**

## Aliases

ARID1A; AT-Rich Interaction Domain 1A; BAF250; B120; SMARCF1; P270; SWI/SNF-Related, Matrix-Associated, Actin-Dependent Regulator Of Chromatin Subfamily F Member 1; AT-Rich Interactive Domain-Containing Protein 1A; AT Rich Interactive Domain 1A (SWI-Like); ARID Domain-Containing Protein 1A; SWI/SNF Complex Protein P270; BRG1-Associated Factor 250a; SWI-Like Protein; Osa Homolog 1; BAF250a; BAF250A; C1orf4; HOSA1; OSA1; HELD; SWI/SNF Related, Matrix Associated, Actin Dependent Regulator Of Chromatin, Subfamily F, Member 1; AT Rich Interactive Domain 1A (SWI- Like); Chromatin Remodeling Factor P250; BRG1-Associated Factor 250; OSA1 Nuclear Protein; Brain Protein 120; C10rf4; C10RF4; C1ORF4; BM029; MRD14; CSS2; ELD

## Background

Gene Name: ARID1A

NCBI Gene Entry: [8289](#)

UniProt Entry: [O14497](#)

## Application Information

Molecular Weight: Predicted, 242 kDa, observed, 270 kDa

Clonality: Rabbit monoclonal antibody

Clone ID: 23GB3230

Species Reactivity: Human, mouse, rat

Applications Tested: Western blotting (WB), flow cytometry (FCM), immunocytochemistry (IC)

## Immunogen

A synthesized peptide derived from human ARID1A

## Isotype

Rabbit IgG

## Storage Buffer

Supplied in PBS (pH 7.4) containing 50% glycerol, and 0.02% sodium azide.

## Storage

Store at -20 °C for one year.

## Recommended Dilutions

---

### SUPPORT

SUPPORT@GENUINBIOTECH.COM  
TEL: +1-540-855-7041

### ORDERS

SALES@GENUINBIOTECH.COM  
FAX: +1-540-855-7041

[WWW.GENUINBIOTECH.COM](http://WWW.GENUINBIOTECH.COM)

## KD-Validated Anti-ARID1A Recombinant Rabbit Monoclonal Antibody

PAGE 2

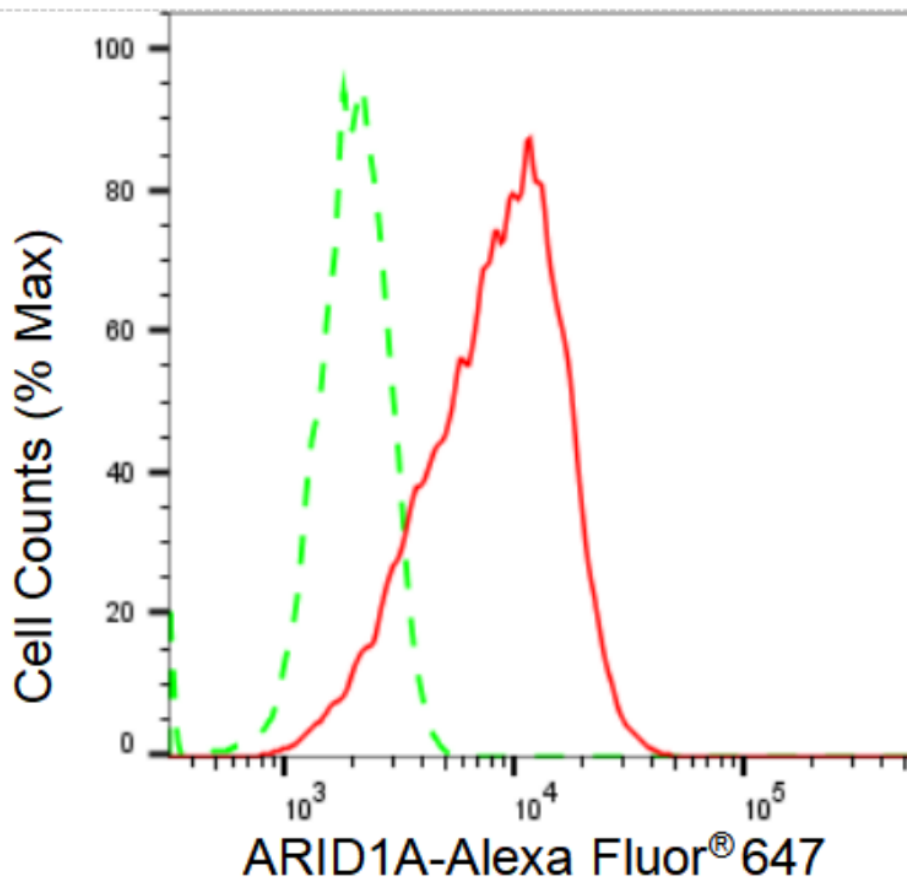
Western Blotting (WB): 1:1,000-1:5,000

Flow Cytometry (FCM): 1:2,000

Immunocytochemistry (IC): 1:100-1:1,000

**Note:** This product is for research use only.

### Validation Data



Copyright ©2024 Genuin Biotechnologies LLC

Flow cytometric analysis of ARID1A expression in C2C12 cells using ARID1A antibody (Cat#61580, 1:2000). Green, isotype control; red, ARID1A.

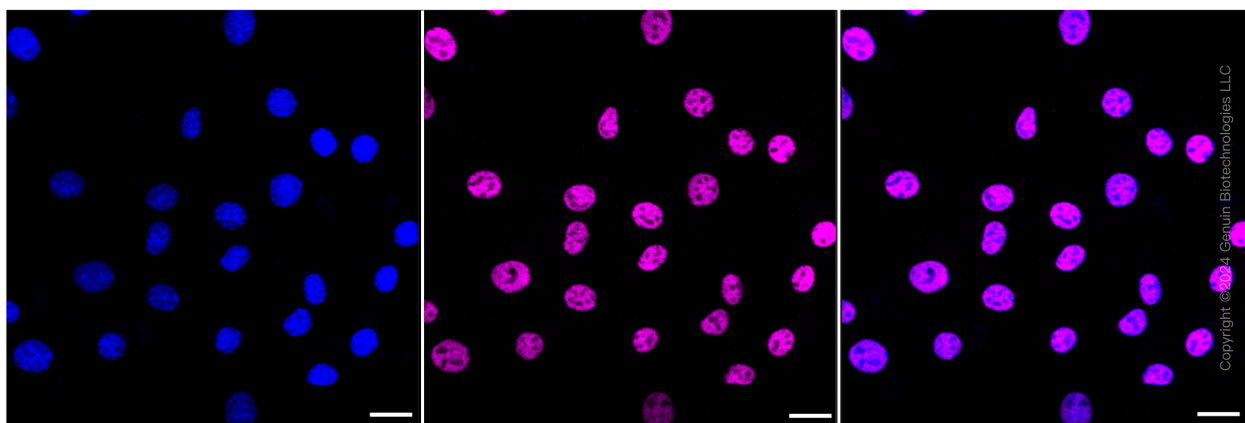
#### SUPPORT

SUPPORT@GENUINBIOTECH.COM  
TEL: +1-540-855-7041

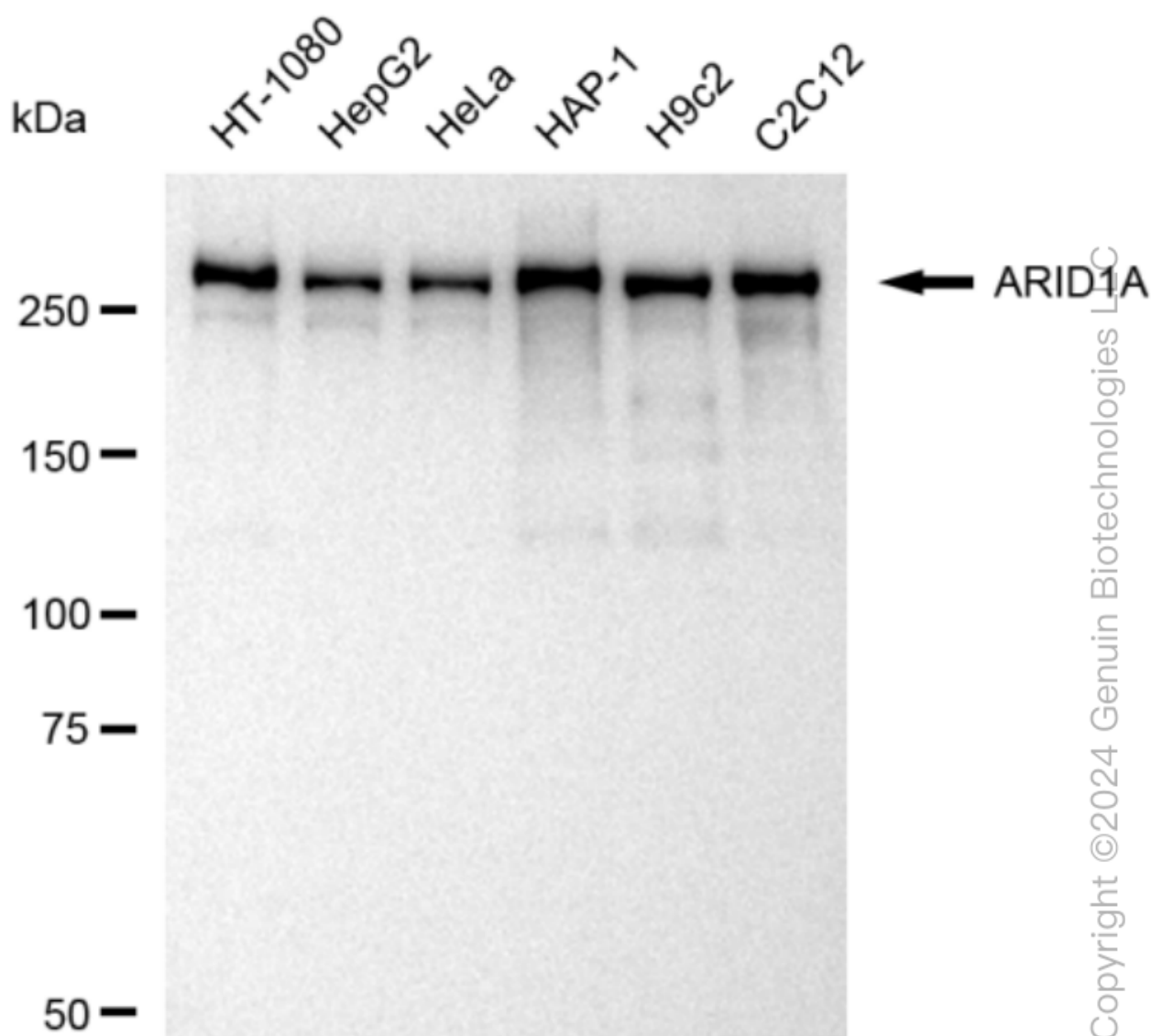
#### ORDERS

SALES@GENUINBIOTECH.COM  
FAX: +1-540-855-7041

[WWW.GENUINBIOTECH.COM](http://WWW.GENUINBIOTECH.COM)



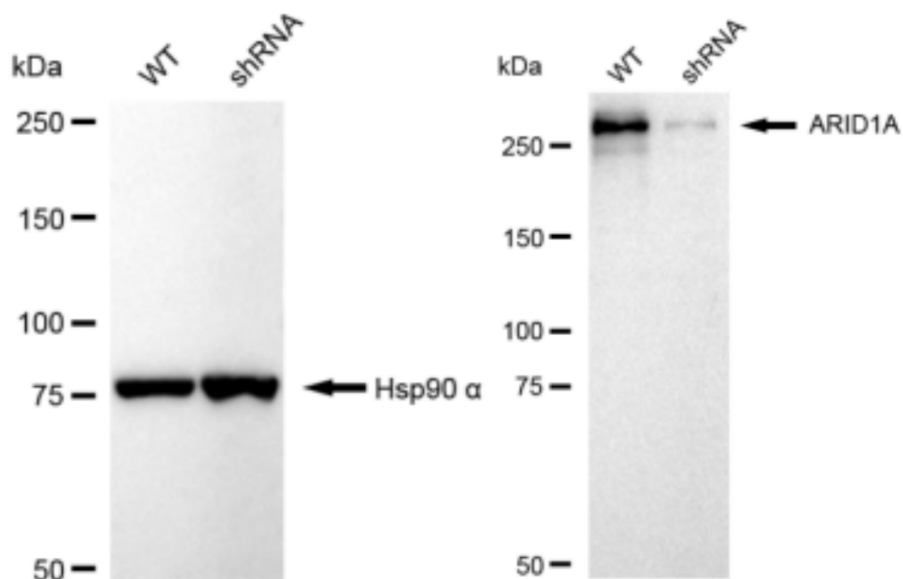
Immunocytochemical staining of C2C12 cells with ARID1A antibody (Cat#61580, 1:1,000). Nuclei were stained blue with DAPI; ARID1A was stained magenta with Alexa Fluor® 647. Images were taken using Leica stellaris 5. Protein abundance based on laser Intensity and smart gain: Medium. Scale bar: 20  $\mu$ m.



Western blotting analysis using anti-ARID1A antibody (Cat#61580). Total cell lysates (30  $\mu$ g) from various cell lines were loaded and separated by SDS-PAGE. The blot was incubated with anti-ARID1A antibody (Cat#61580, 1:5,000) and HRP-conjugated goat anti-rabbit secondary antibody (Cat#201, 1:20,000) respectively. Image was developed using FeQ™ ECL Substrate Kit (Cat#226).

## KD-Validated Anti-ARID1A Recombinant Rabbit Monoclonal Antibody

PAGE 5



Copyright ©2024 Genuin Biotechnologies LLC

Western blotting analysis using anti-ARID1A antibody (Cat#61580). ARID1A expression in wild type (WT) and ARID1A shRNA knockdown (KD) HeLa cells with 30 µg of total cell lysates. Hsp90 α serves as a loading control. The blot was incubated with anti-ARID1A antibody (Cat#61580, 1:5,000) and HRP-conjugated goat anti-rabbit secondary antibody (Cat#201, 1:20,000) respectively. Image was developed using FeQ™ ECL Substrate Kit (Cat#226).

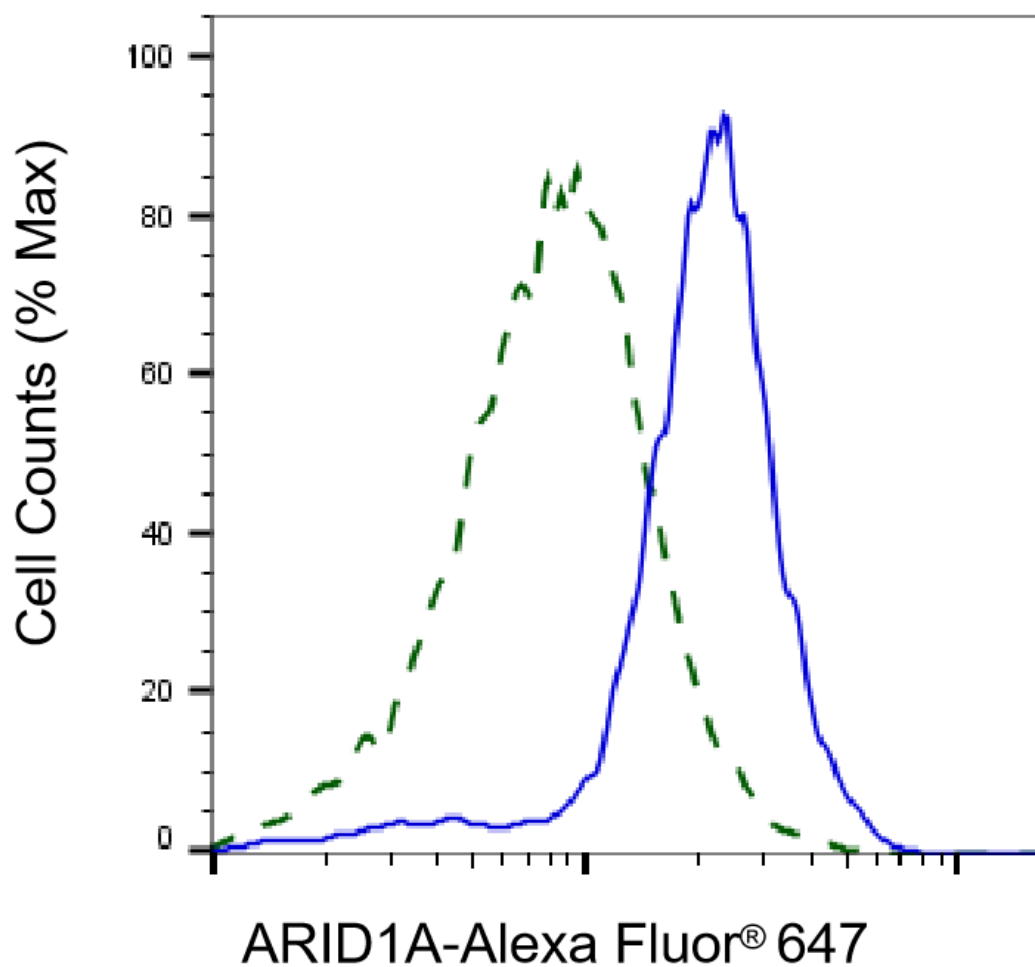
### SUPPORT

SUPPORT@GENUINBIOTECH.COM  
TEL: +1-540-855-7041

### ORDERS

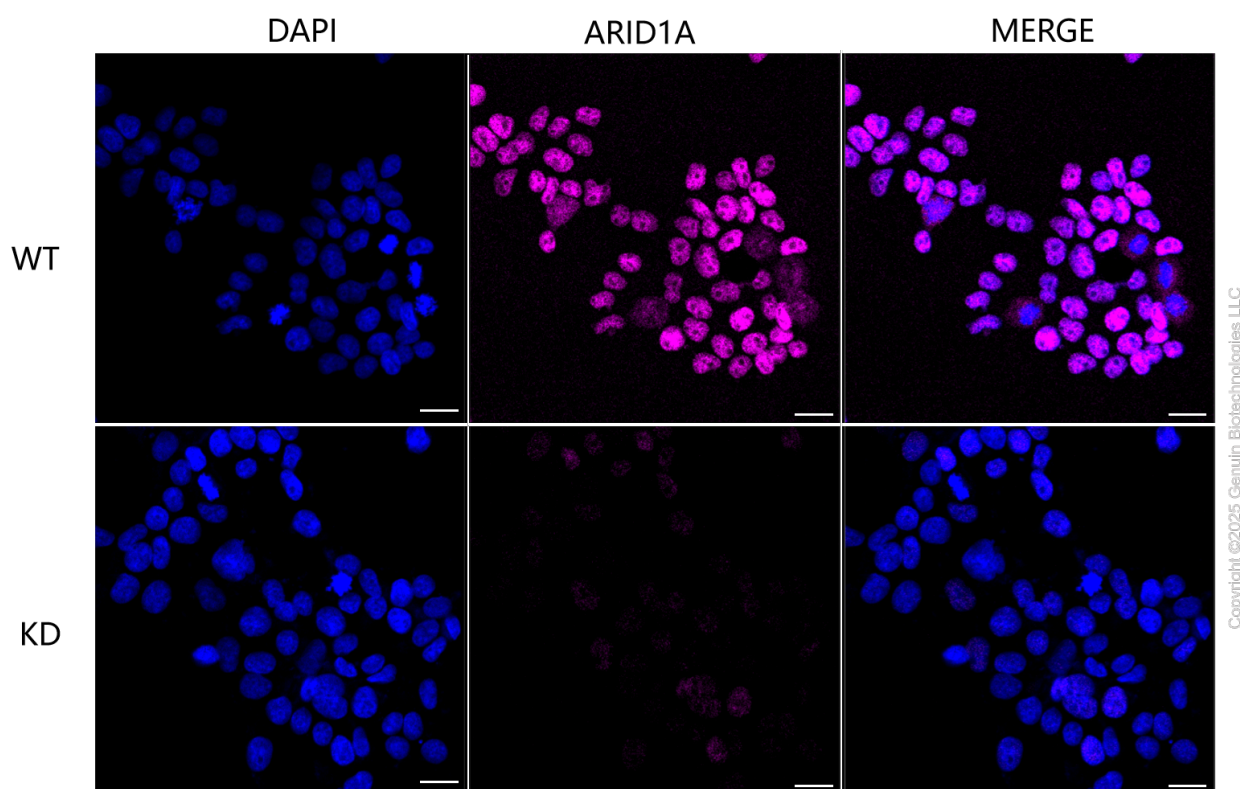
SALES@GENUINBIOTECH.COM  
FAX: +1-540-855-7041

[WWW.GENUINBIOTECH.COM](http://WWW.GENUINBIOTECH.COM)



Copyright ©2025 Genuin Biotechnologies LLC

Validation of ARID1A knockdown using flow cytometry. Wild-type(WT, Blue) and knockdown(KD, Green) HeLa cells were stained with anti-ARID1A antibody (Cat#61580, 1:2,000) and analyzed using BD flow cytometer.



Immunocytochemical staining of HeLa cells using anti-ARID1A antibody (Cat#61580, 1:1,000), Top panel: wild-type (WT); Bottom panel: ARID1A shRNA knockdown (KD). Nuclei were stained blue with DAPI; ARID1A was stained magenta with Alexa Fluor® 647. Scale bar, 20  $\mu$ m.