

# KD-Validated Anti-PRKAG1 Recombinant Rabbit Monoclonal Antibody



**Catalog #: 61582**

## Aliases

PRKAG1; Protein Kinase AMP-Activated Non-Catalytic Subunit Gamma 1; Protein Kinase, AMP-Activated, Gamma 1 Non-Catalytic Subunit; 5'-AMP-Activated Protein Kinase Subunit Gamma-1; AMPK Gamma1; 5'-AMP-Activated Protein Kinase, Gamma-1 Subunit; AMPK Subunit Gamma-1; AMPK Gamma-1 Chain; AMPKG; AMPKg

## Background

Gene Name: PRKAG1

NCBI Gene Entry: [5571](#)

UniProt Entry: [P54619](#)

## Application Information

Molecular Weight: Predicted, 38 kDa, observed, 36 kDa

Clonality: Rabbit monoclonal antibody

Clone ID: 25GB2915

Species Reactivity: Human, mouse, rat

Applications Tested: Western blotting (WB), immunocytochemistry (IC)

## Immunogen

A synthesized peptide derived from human AMPK gamma 1

## Isotype

Rabbit IgG

## Storage Buffer

Supplied in PBS (pH 7.4) containing 50% glycerol, and 0.02% sodium azide.

## Storage

Store at -20 °C for one year.

## Recommended Dilutions

Western blotting (WB): 1:1,000-1:5,000

Immunocytochemistry (IC): 1:100-1:1,000

**Note:** This product is for research use only.

---

### SUPPORT

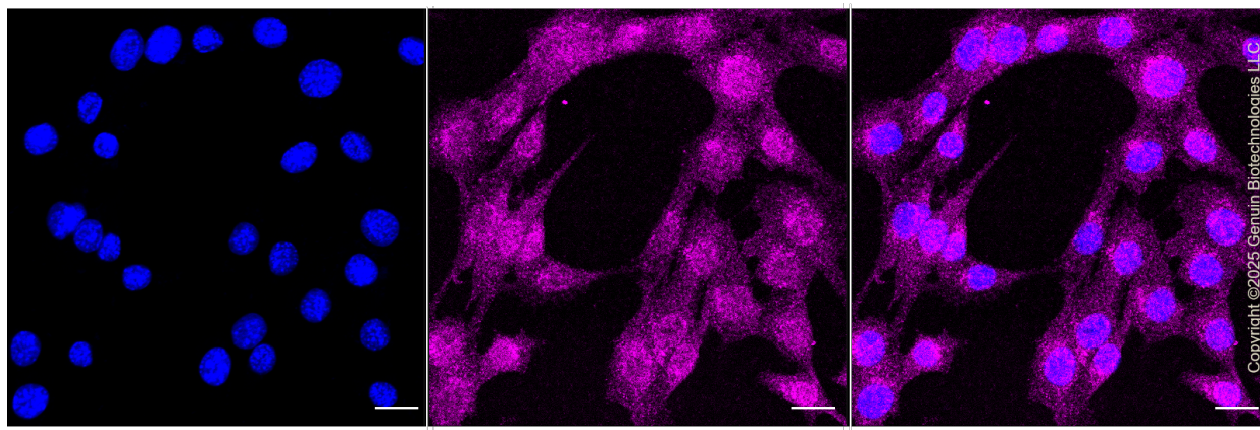
SUPPORT@GENUINBIOTECH.COM  
TEL: +1-540-855-7041

### ORDERS

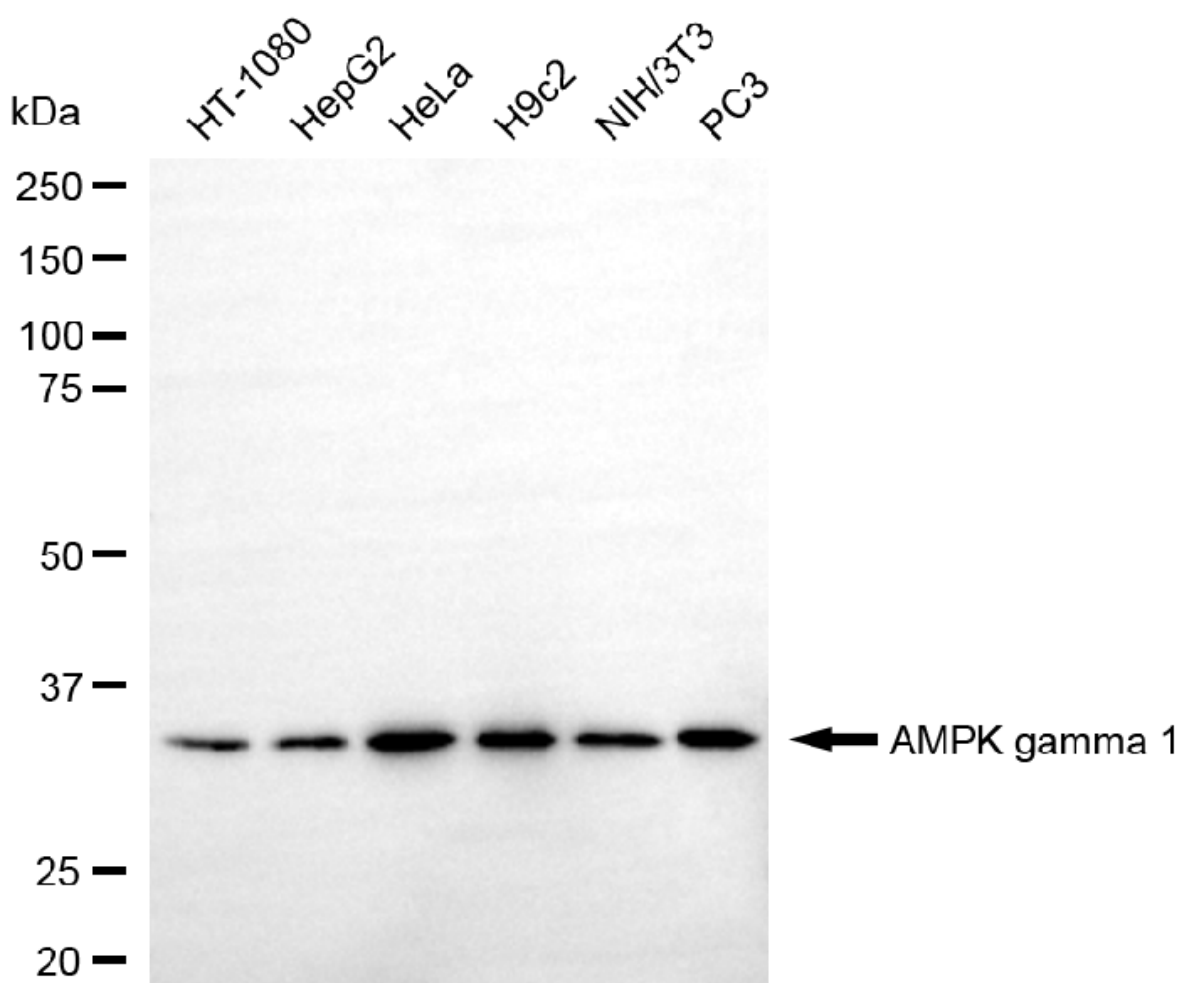
SALES@GENUINBIOTECH.COM  
FAX: +1-540-855-7041

[WWW.GENUINBIOTECH.COM](http://WWW.GENUINBIOTECH.COM)

**Validation Data**



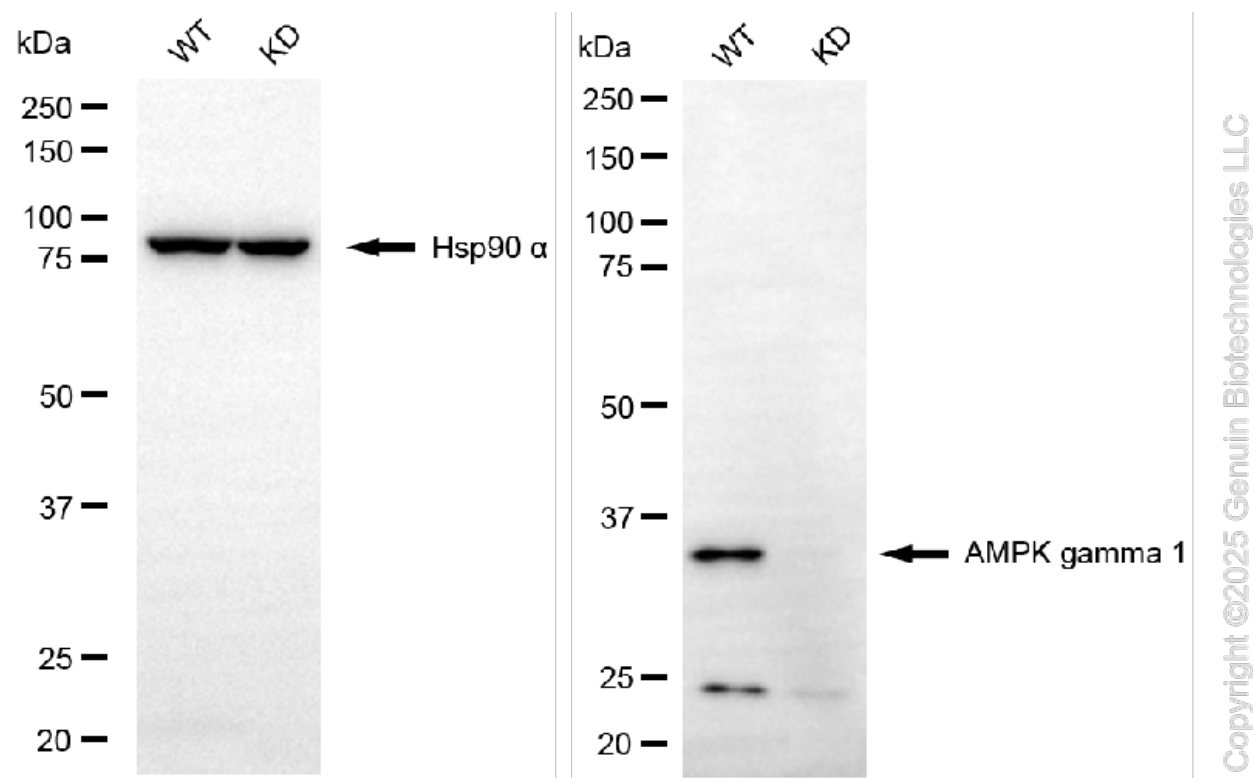
Immunocytochemical staining of C2C12 cells with anti-AMPK gamma 1 antibody (Cat#61582, 1:1,000). Nuclei were stained blue with DAPI; AMPK gamma 1 was stained magenta with Alexa Fluor® 647. Images were taken using Leica stellaris 5. Protein abundance based on laser Intensity and smart gain: Medium. Scale bar, 20  $\mu$ m.



## KD-Validated Anti-PRKAG1 Recombinant Rabbit Monoclonal Antibody

PAGE 3

Western blotting analysis using anti-AMPK gamma 1 antibody (Cat#61582). Total cell lysates (30 µg) from various cell lines were loaded and separated by SDS-PAGE. The blot was incubated with anti-AMPK gamma 1 antibody (Cat#61582, 1:5,000) and HRP-conjugated goat anti-rabbit secondary antibody (Cat#201, 1:20,000) respectively. Image was developed using FeQ™ ECL Substrate Kit (Cat#226).



Western blotting analysis using anti-AMPK gamma 1 antibody (Cat#61582). AMPK gamma 1 expression in wild-type (WT) and PRKAG1 knockdown (KD) HSHC cells with 30 µg of total cell lysates. Hsp90 α serves as a loading control. The blot was incubated with anti-AMPK gamma 1 antibody (Cat#61582, 1:2,500) and HRP-conjugated goat anti-rabbit secondary antibody (Cat#201, 1:20,000) respectively. Image was developed using FeQ™ ECL Substrate Kit (Cat#226).

### SUPPORT

SUPPORT@GENUINBIOTECH.COM  
TEL: +1-540-855-7041

### ORDERS

SALES@GENUINBIOTECH.COM  
FAX: +1-540-855-7041

WWW.GENUINBIOTECH.COM