

KD-Validated Anti-Cyclin B2 Recombinant Rabbit Monoclonal Antibody



Catalog #: 61583

Aliases

CCNB2; Cyclin B2; HsT17299; G2/Mitotic-Specific Cyclin-B2

Background

Gene Name: CCNB2

NCBI Gene Entry: [9133](#)

UniProt Entry: [O95067](#)

Application Information

Molecular Weight: Predicted, 45 kDa, observed, 45 kDa

Clonality: Rabbit monoclonal antibody

Clone ID: 25GB2920

Species Reactivity: Human

Applications Tested: Western blotting (WB), immunocytochemistry (IC)

Immunogen

A synthesized peptide derived from human Cyclin B2

Isotype

Rabbit IgG

Storage Buffer

Supplied in PBS (pH 7.4) containing 50% glycerol, and 0.02% sodium azide.

Storage

Store at -20 °C for one year.

Recommended Dilutions

Western blotting (WB): 1:1,000-1:5,000

Immunocytochemistry (IC): 1:100-1:1,000

Note: This product is for research use only.

Validation Data

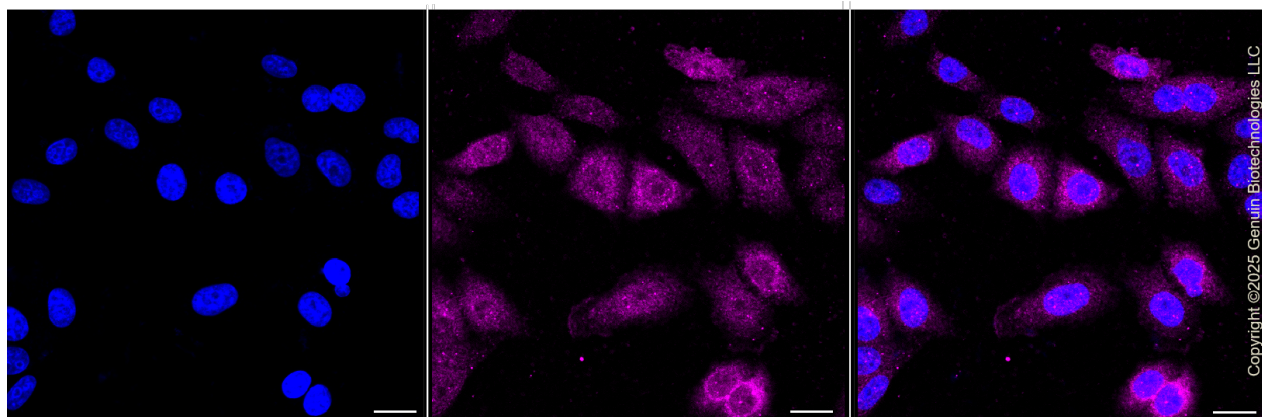
SUPPORT

SUPPORT@GENUINBIOTECH.COM
TEL: +1-540-855-7041

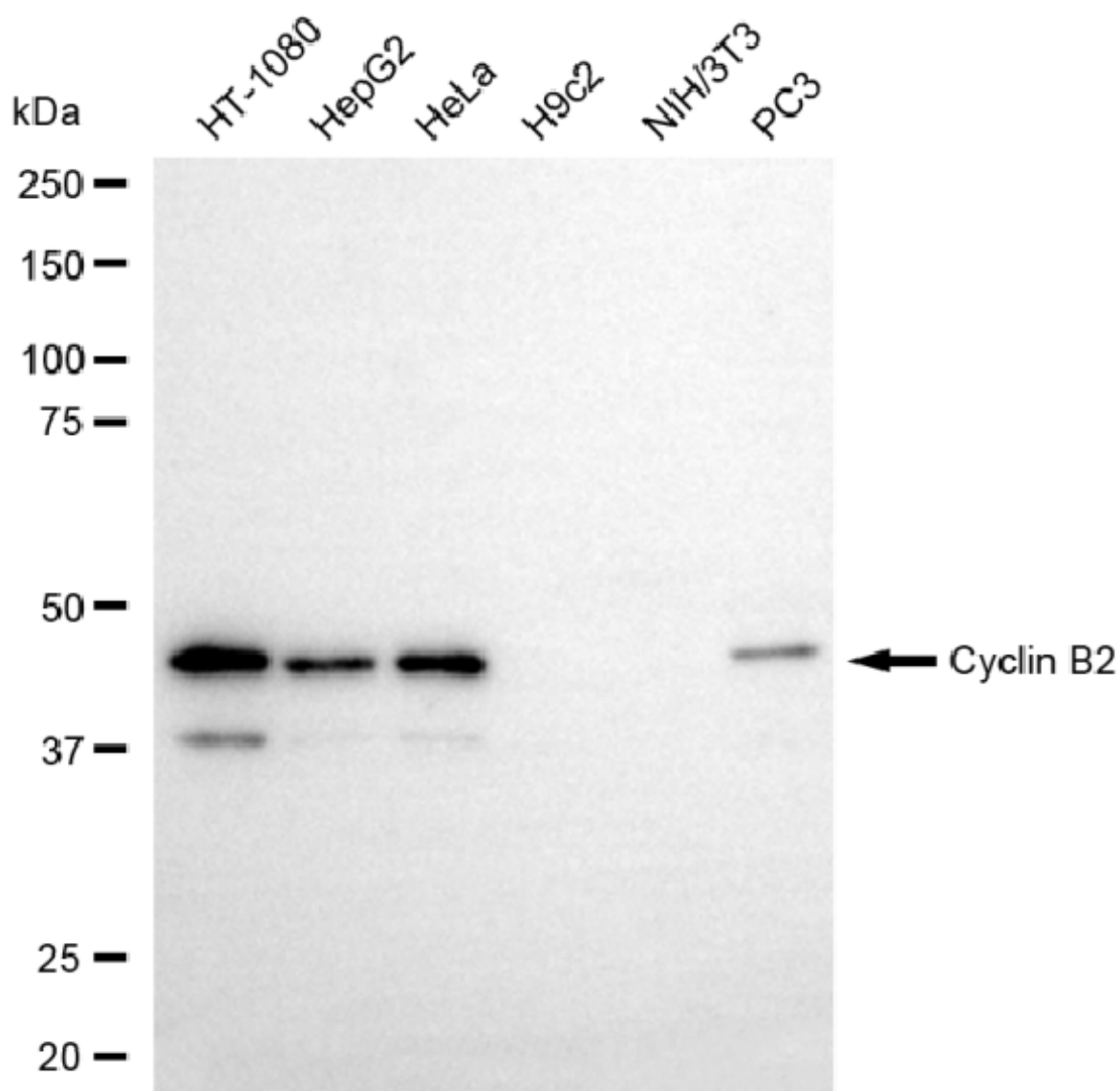
ORDERS

SALES@GENUINBIOTECH.COM
FAX: +1-540-855-7041

WWW.GENUINBIOTECH.COM



Immunocytochemical staining of HepG2 cells with anti-Cyclin B2 antibody (Cat#61583, 1:1,000). Nuclei were stained blue with DAPI; Cyclin B2 was stained magenta with Alexa Fluor® 647. Images were taken using Leica stellaris 5. Protein abundance based on laser Intensity and smart gain: Medium. Scale bar, 20 μ m.

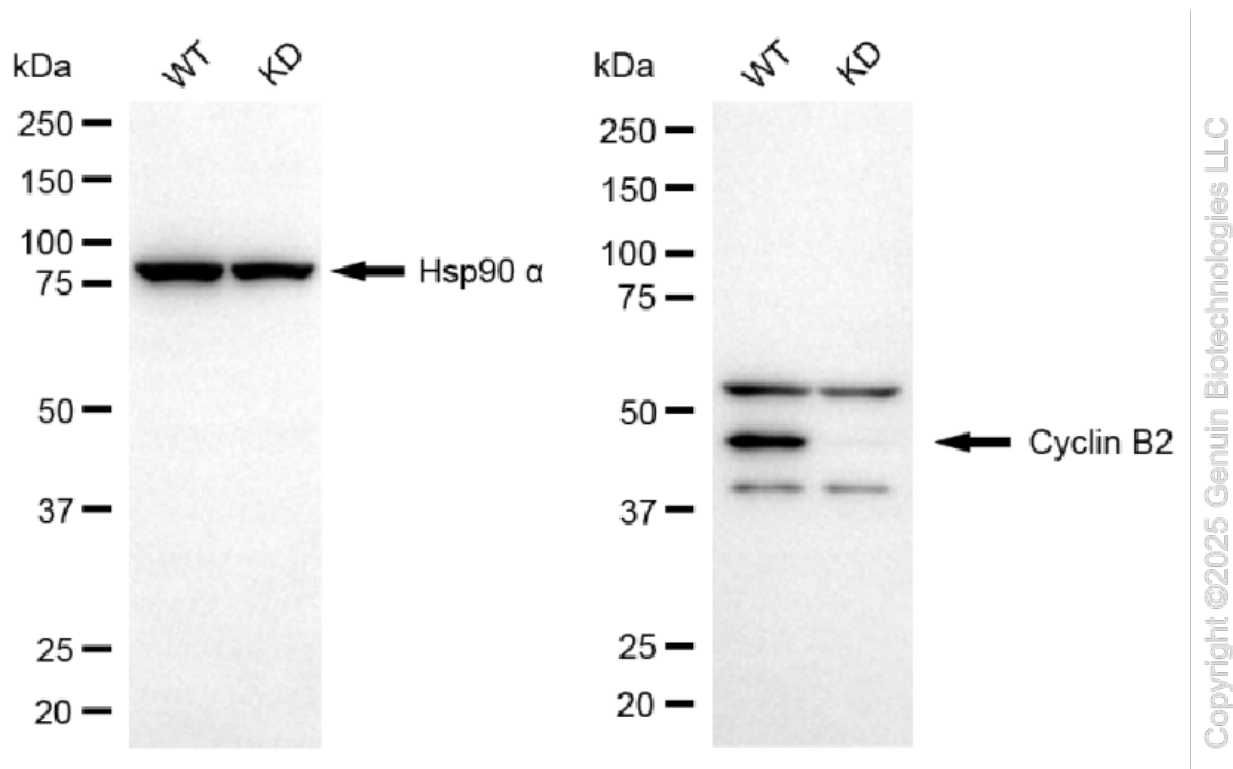


Copyright ©2025 Genuin Biotechnologies LLC

Western blotting analysis using anti-cyclin B2 antibody (Cat#61583). Total cell lysates (30 µg) from various cell lines were loaded and separated by SDS-PAGE. The blot was incubated with anti-cyclin B2 antibody (Cat#61583, 1:5,000) and HRP-conjugated goat anti-rabbit secondary antibody (Cat#201, 1:20,000) respectively. Image was developed using NaQ™ ECL Substrate Kit (Cat#716).

KD-Validated Anti-Cyclin B2 Recombinant Rabbit Monoclonal Antibody

PAGE 4



Western blotting analysis using anti-cyclin B2 antibody (Cat#61583). Cyclin B2 expression in wild-type (WT) and cyclin B2 (CCNB2) knockdown (KD) HT-1080 cells with 20 µg of total cell lysates. Hsp90 α serves as a loading control. The blot was incubated with anti-cyclin B2 antibody (Cat#61583, 1:5,000) and HRP-conjugated goat anti-rabbit secondary antibody (Cat#201, 1:20,000) respectively. Image was developed using NaQ™ ECL Substrate Kit (Cat#716).

SUPPORT

SUPPORT@GENUINBIOTECH.COM
TEL: +1-540-855-7041

ORDERS

SALES@GENUINBIOTECH.COM
FAX: +1-540-855-7041

WWW.GENUINBIOTECH.COM