

KD-Validated Anti-ATP5B Recombinant Rabbit Monoclonal Antibody



Catalog #: 61585

Aliases

ATP5F1B; ATP Synthase F1 Subunit Beta; ATP5B; ATPSB; ATP Synthase, H⁺ Transporting, Mitochondrial F1 Complex, Beta Polypeptide; ATP Synthase Subunit Beta, Mitochondrial; ATPMB; Mitochondrial ATP Synthetase, Beta Subunit; Mitochondrial ATP Synthase Beta Subunit; Epididymis Secretory Protein Li 271; EC 3.6.3.14; EC 7.1.2.2; HEL-S-271; EC 3.6.3; HUMOP2

Background

Gene Name: ATP5F1B

NCBI Gene Entry: [506](#)

UniProt Entry: [P06576](#)

Application Information

Molecular Weight: Predicted, 57 kDa, observed, 50 kDa

Clonality: Rabbit monoclonal antibody

Clone ID: 23GB3255

Species Reactivity: Human, mouse, rat

Applications Tested: Western blotting (WB), flow cytometry (FCM), immunocytochemistry (IC), immunohistochemistry (IHC)

Immunogen

A synthesized peptide derived from human ATPB

Isotype

Rabbit IgG

Storage Buffer

Supplied in PBS (pH 7.4) containing 50% glycerol, and 0.02% sodium azide.

Storage

Store at -20 °C for one year.

Recommended Dilutions

Western Blotting (WB): 1:1,000-1:5,000

Immunocytochemistry (IC): 1:100-1:1,000

Flow Cytometry (FCM): 1:2,000

SUPPORT

SUPPORT@GENUINBIOTECH.COM
TEL: +1-540-855-7041

ORDERS

SALES@GENUINBIOTECH.COM
FAX: +1-540-855-7041

WWW.GENUINBIOTECH.COM

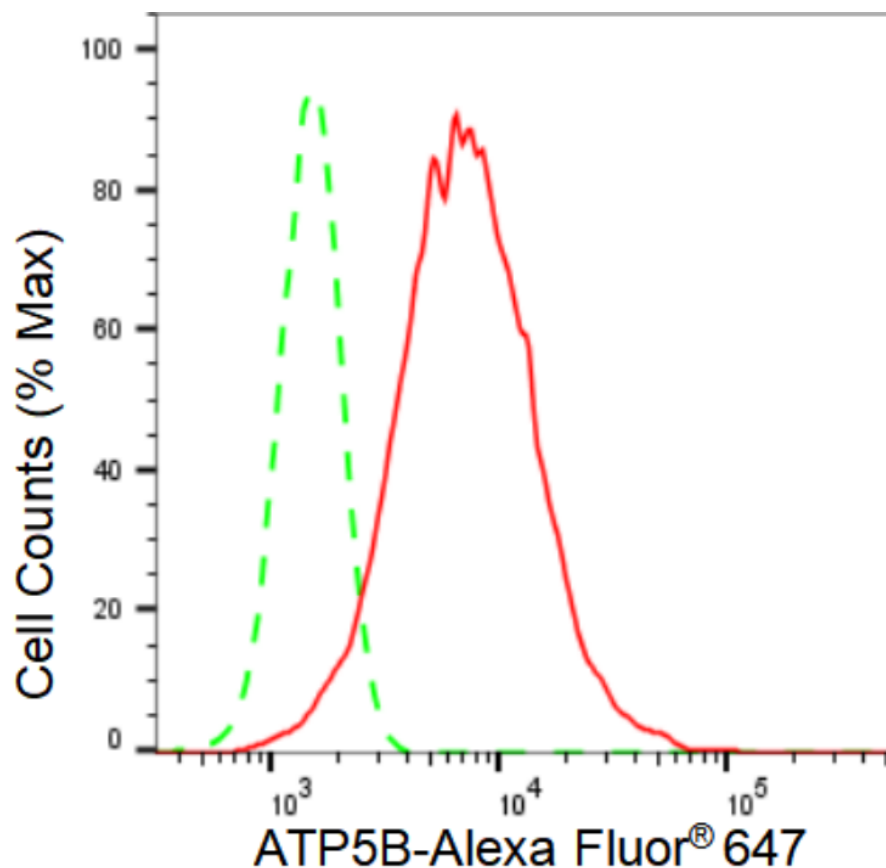
KD-Validated Anti-ATP5B Recombinant Rabbit Monoclonal Antibody

PAGE 2

Immunohistochemistry (IHC): 1:50-1:100

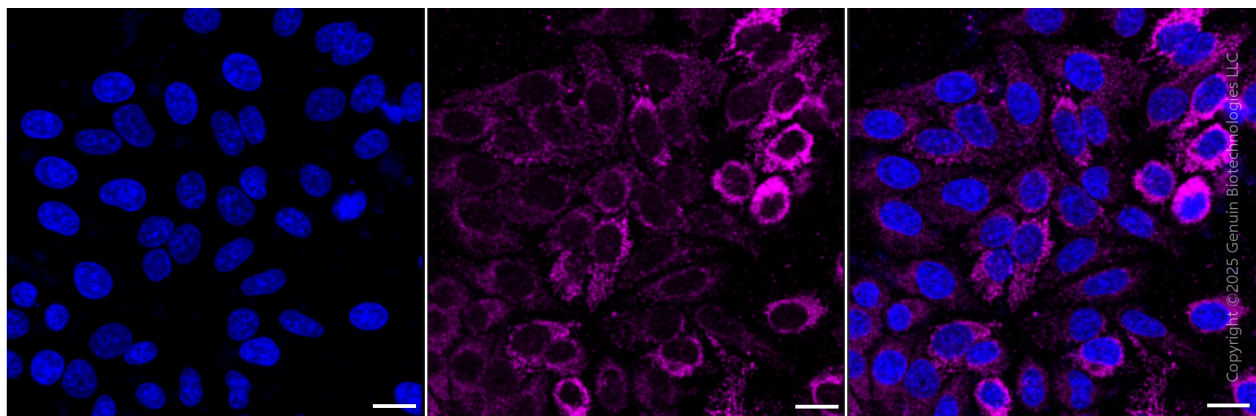
Note: This product is for research use only.

Validation Data



Copyright ©2024 Genuin Biotechnologies LLC

Flow cytometric analysis of ATP5B expression in HepG2 cells using ATP5B antibody (Cat#61585, 1:2,000). Green, isotype control; red, ATP5B.



Copyright ©2025 Genuin Biotechnologies LLC

SUPPORT

SUPPORT@GENUINBIOTECH.COM
TEL: +1-540-855-7041

ORDERS

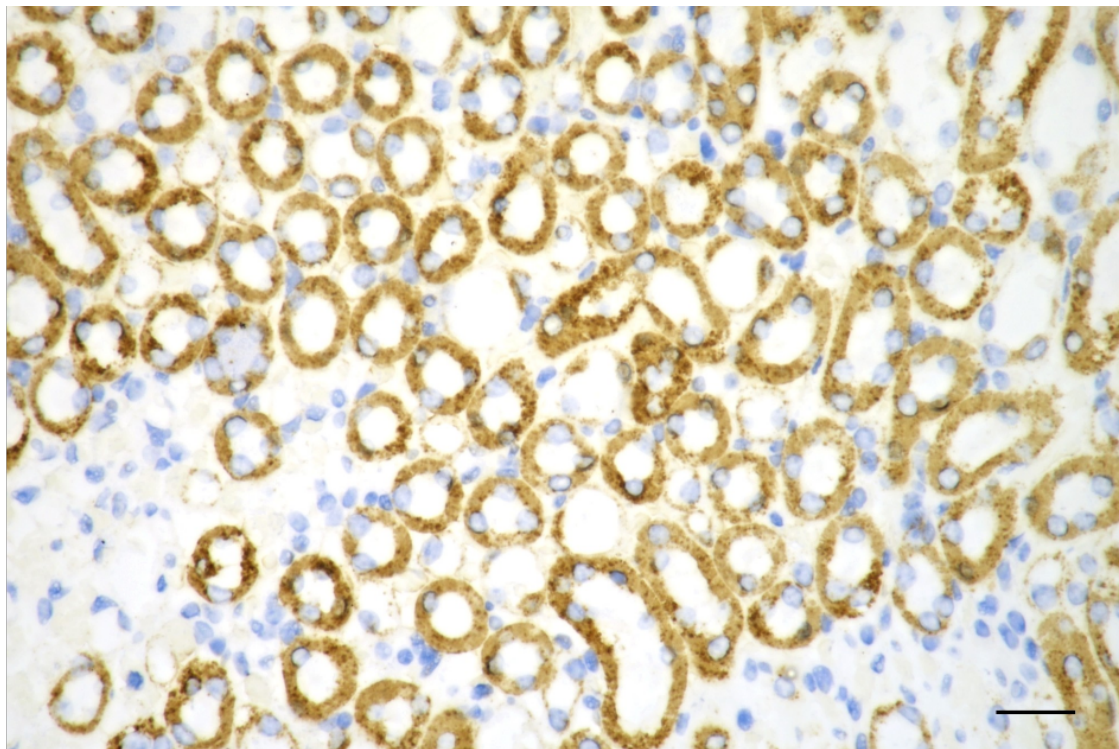
SALES@GENUINBIOTECH.COM
FAX: +1-540-855-7041

WWW.GENUINBIOTECH.COM

KD-Validated Anti-ATP5B Recombinant Rabbit Monoclonal Antibody

PAGE 3

Nuclei were stained blue with DAPI; ATP5B was stained magenta with Alexa Fluor® 647. Images were taken using Leica stellaris 5. Protein abundance based on laser Intensity and smart gain: Medium. Scale bar, 20 μ m.



Copyright ©2025 Genuin Biotechnologies LLC

Immunohistochemistry was performed on paraffin-embedded mouse kidney using anti-ATP5B antibody (Cat#61585, 1:100). Antigen retrieval was done in sodium citrate buffer (pH 6.0). DAB was used for detection, with hematoxylin counterstaining. Images were acquired using a Nikon Ci-L Plus microscope (40 \times objective). Scale bar: 25 μ m.

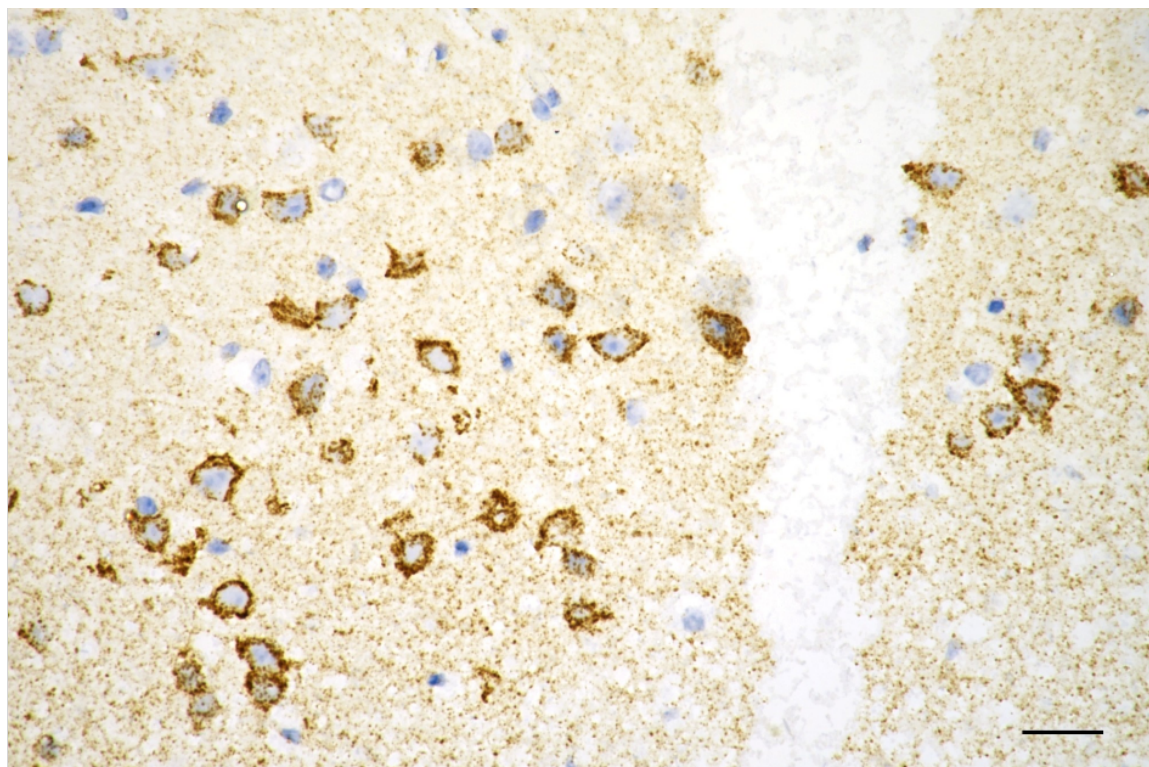
SUPPORT

SUPPORT@GENUINBIOTECH.COM
TEL: +1-540-855-7041

ORDERS

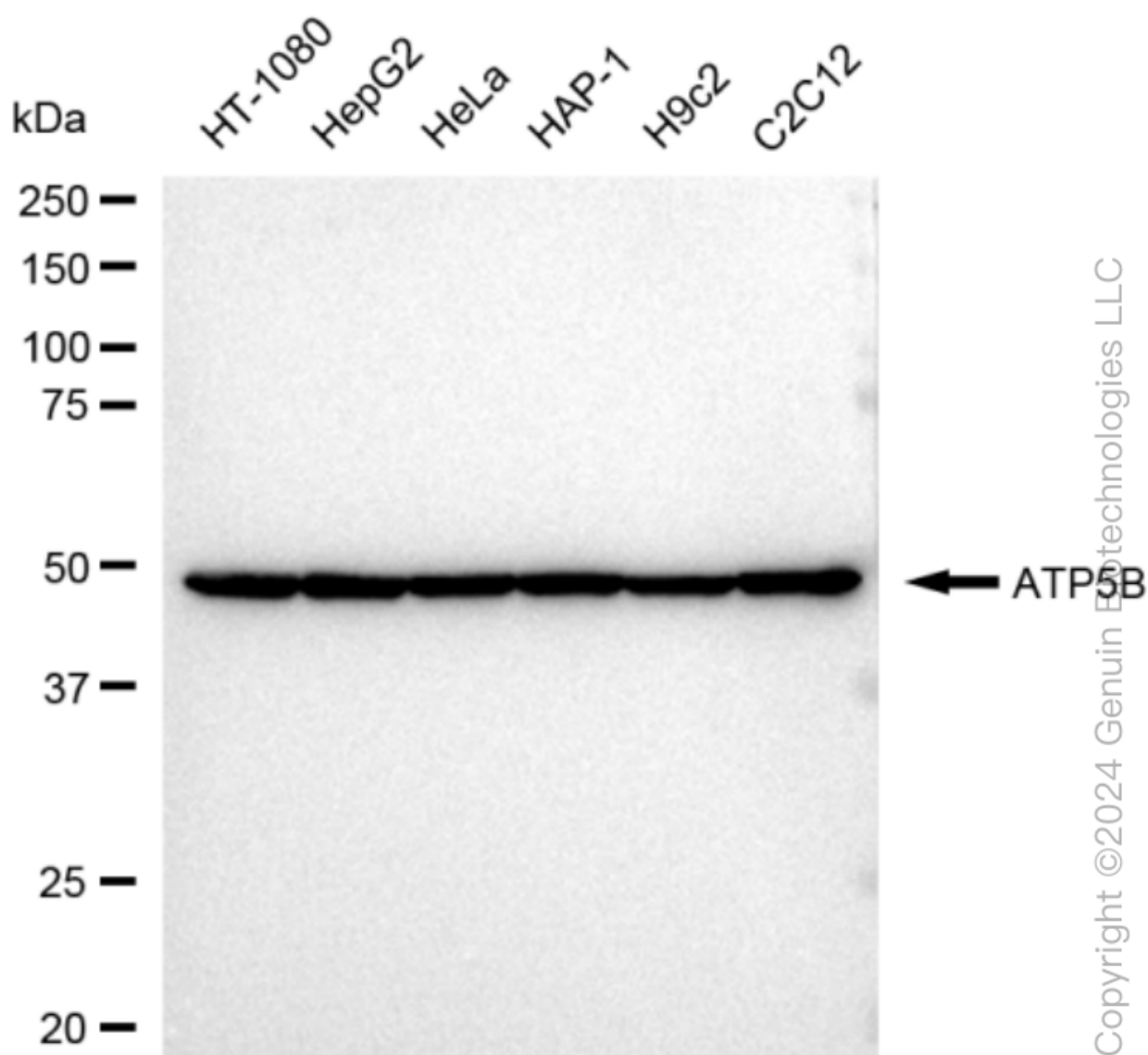
SALES@GENUINBIOTECH.COM
FAX: +1-540-855-7041

WWW.GENUINBIOTECH.COM



Copyright ©2025 Genuin Biotechnologies LLC

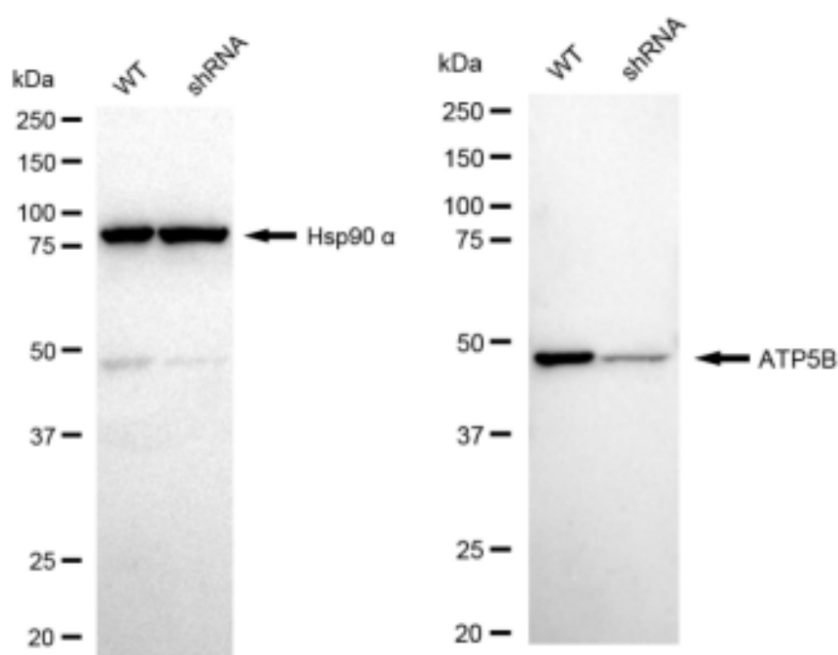
Immunohistochemistry was performed on paraffin-embedded mouse brain using anti-ATP5B antibody (Cat#61585, 1:100). Antigen retrieval was done in sodium citrate buffer (pH 6.0). DAB was used for detection, with hematoxylin counterstaining. Images were acquired using a Nikon Ci-L Plus microscope (40× objective). Scale bar: 25 μ m.



Western blotting analysis using anti-ATP5B antibody (Cat#61585). Total cell lysates (30 μ g) from various cell lines were loaded and separated by SDS-PAGE. The blot was incubated with anti-ATP5B antibody (Cat#61585, 1:5,000) and HRP-conjugated goat anti-rabbit secondary antibody (Cat#201, 1:20,000) respectively. Image was developed using FeQ™ ECL Substrate Kit (Cat#226).

KD-Validated Anti-ATP5B Recombinant Rabbit Monoclonal Antibody

PAGE 6



Copyright ©2024 Genuin Biotechnologies LLC

Western blotting analysis using anti-ATP5B antibody (Cat#61585). ATP5B expression in wild type (WT) and ATP5B shRNA knockdown (KD) HeLa cells with 30 μ g of total cell lysates. Hsp90 α serves as a loading control. The blot was incubated with anti-ATP5B antibody (Cat#61585, 1:5,000) and HRP-conjugated goat anti-rabbit secondary antibody (Cat#201, 1:20,000) respectively. Image was developed using FeQ™ ECL Substrate Kit (Cat#226).

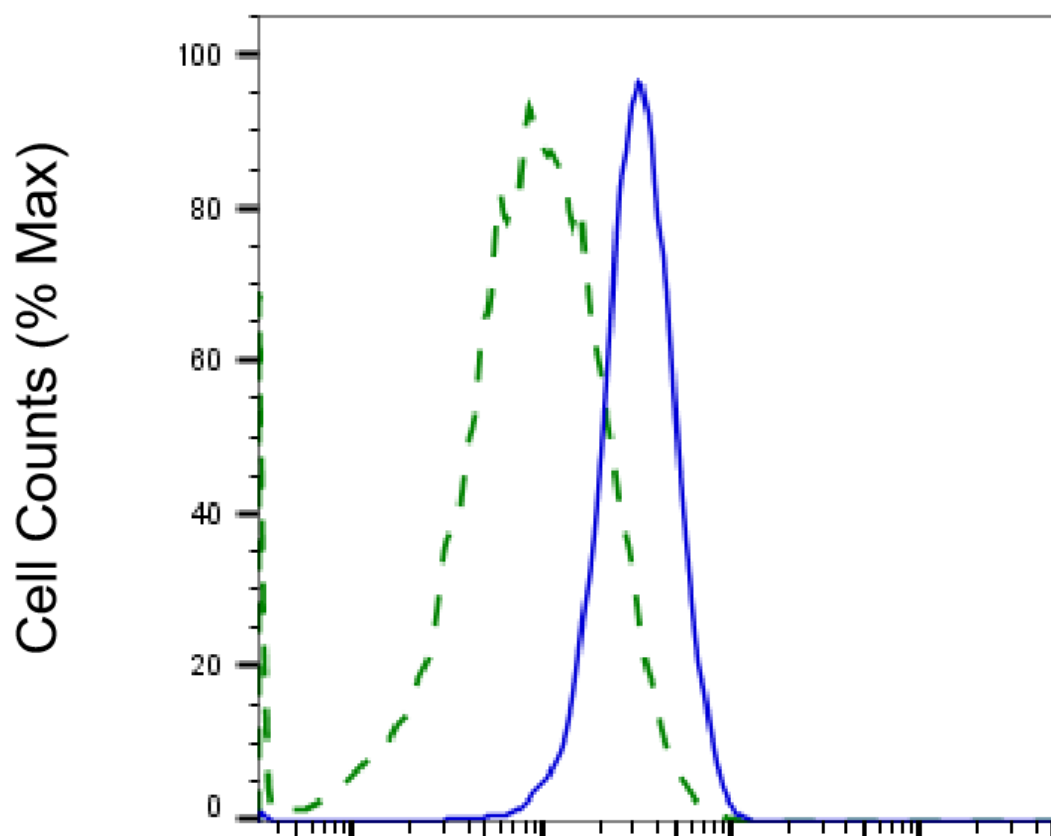
SUPPORT

SUPPORT@GENUINBIOTECH.COM
TEL: +1-540-855-7041

ORDERS

SALES@GENUINBIOTECH.COM
FAX: +1-540-855-7041

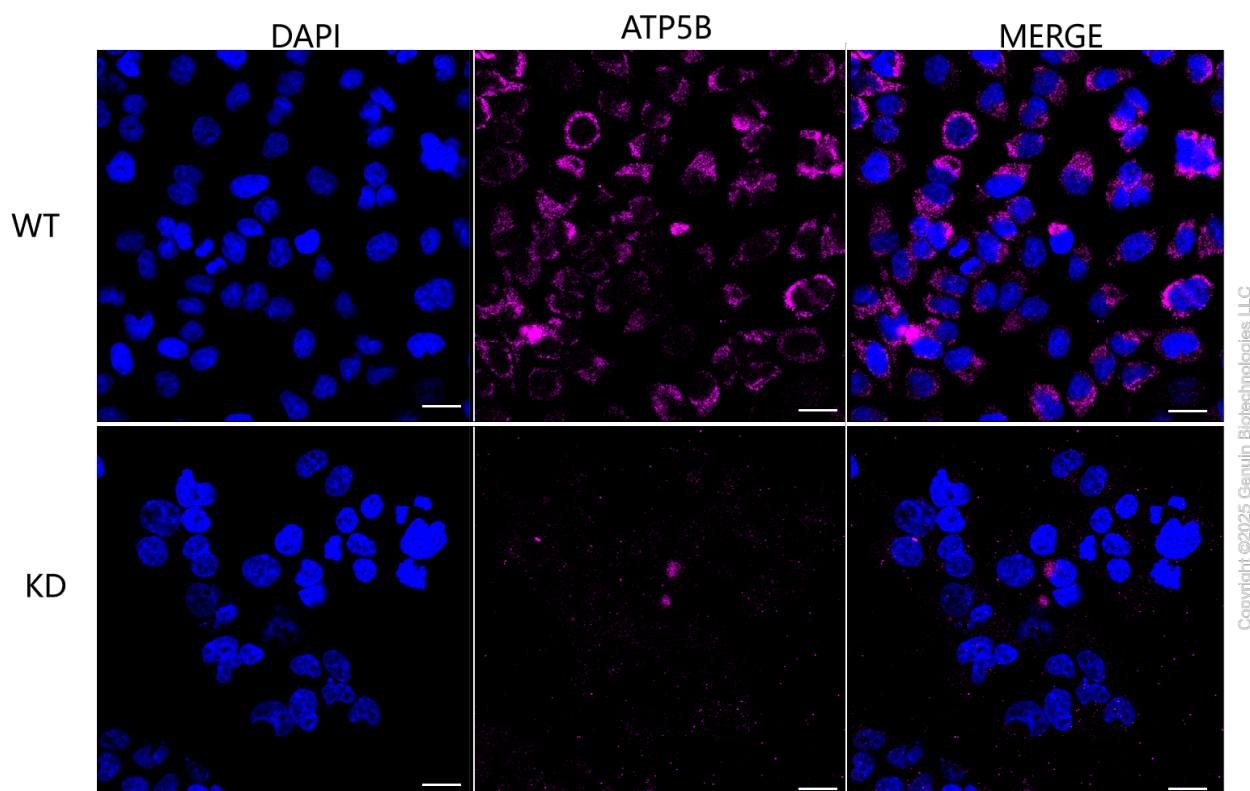
WWW.GENUINBIOTECH.COM



Copyright ©2025 Genuin Biotechnologies LLC

ATP5B-Alexa Fluor® 647

Validation of ATP5B knockdown using flow cytometry. Wild-type(WT, Blue) and knockdown(KD, Green) HeLa cells were stained with anti-ATP5B antibody (Cat#61585, 1:2,000) and analyzed using CytoFLEX.



Immunocytochemical staining of HeLa cells using anti-ATP5B antibody (Cat#61585, 1:1,000), Top panel: wild-type (WT); Bottom panel: ATP5B shRNA knockdown (KD). Nuclei were stained blue with DAPI; ATP5B was stained magenta with Alexa Fluor® 647. Scale bar, 20 μ m. Permeabilization: Triton.