

KD-Validated Anti-H2B Clustered Histone 12 Recombinant Rabbit Monoclonal Antibody



Catalog #: 61586

Aliases

H2BC12; H2B Clustered Histone 12; HIST1H2B; H2BFAiii; H2BFT; Histone Cluster 1 H2B Family Member K; H2B Histone Family, Member T; HIRA-Interacting Protein 1; Histone Cluster 1, H2bk; Histone H2B Type 1-K; Histone 1, H2bk; H2B K; Histone Family Member; HIRIP1; H2B/S; H2BK

Background

Gene Name: H2BC12

NCBI Gene Entry: [85236](#)

UniProt Entry: [O60814](#)

Application Information

Molecular Weight: Predicted, 14 kDa; observed, 17 kDa

Clonality: Rabbit monoclonal antibody

Clone ID: 25GB2925

Species Reactivity: Human, mouse, rat

Applications Tested: Western blotting (WB), immunocytochemistry (IC)

Immunogen

A synthesized peptide derived from human Histone H2B

Isotype

Rabbit IgG

Storage Buffer

Supplied in PBS (pH 7.4) containing 50% glycerol, and 0.02% sodium azide.

Storage

Store at -20 °C for one year.

Recommended Dilutions

Western blotting (WB): 1:4,000-1:20,000

Immunocytochemistry (IC): 1:100-1:1,000

Note: This product is for research use only.

SUPPORT

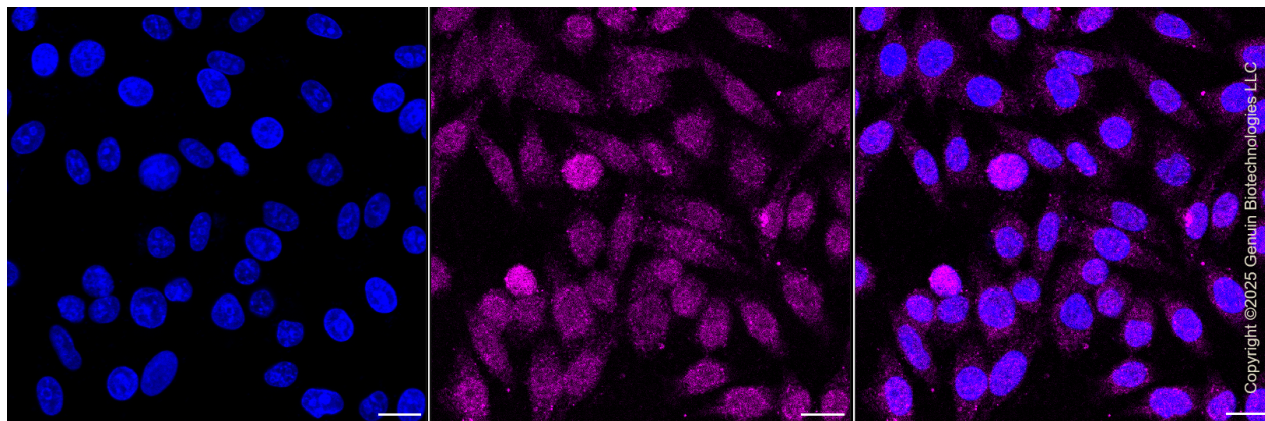
SUPPORT@GENUINBIOTECH.COM
TEL: +1-540-855-7041

ORDERS

SALES@GENUINBIOTECH.COM
FAX: +1-540-855-7041

WWW.GENUINBIOTECH.COM

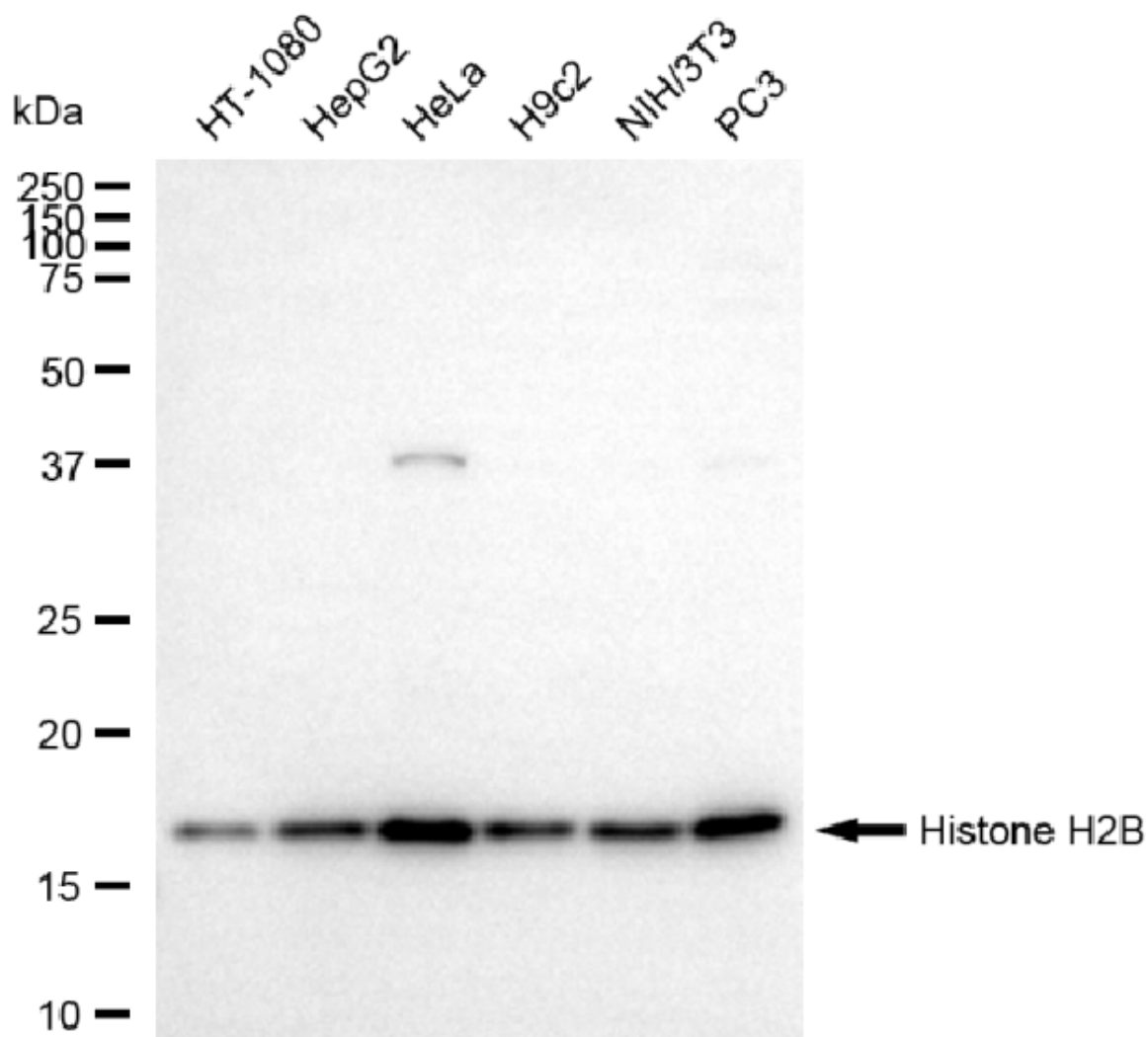
Validation Data



Immunocytochemical staining of HepG2 cells with anti-Histone H2B antibody (Cat#61586, 1:1,000). Nuclei were stained blue with DAPI; Histone H2B was stained magenta with Alexa Fluor® 647. Images were taken using Leica stellaris 5. Protein abundance based on laser Intensity and smart gain: High. Scale bar, 20 µm.

KD-Validated Anti-H2B Clustered Histone 12 Recombinant Rabbit Monoclonal Antibody

PAGE 3



Copyright ©2025 Genuin Biotechnologies LLC

Western blotting analysis using anti-histone H2B antibody (Cat#61586). Total cell lysates (30 µg) from various cell lines were loaded and separated by SDS-PAGE. The blot was incubated with anti-histone H2B antibody (Cat#61586, 1:20,000) and HRP-conjugated goat anti-rabbit secondary antibody (Cat#201, 1:20,000) respectively. Image was developed using NaQ™ ECL Substrate Kit (Cat#716).

SUPPORT

SUPPORT@GENUINBIOTECH.COM
TEL: +1-540-855-7041

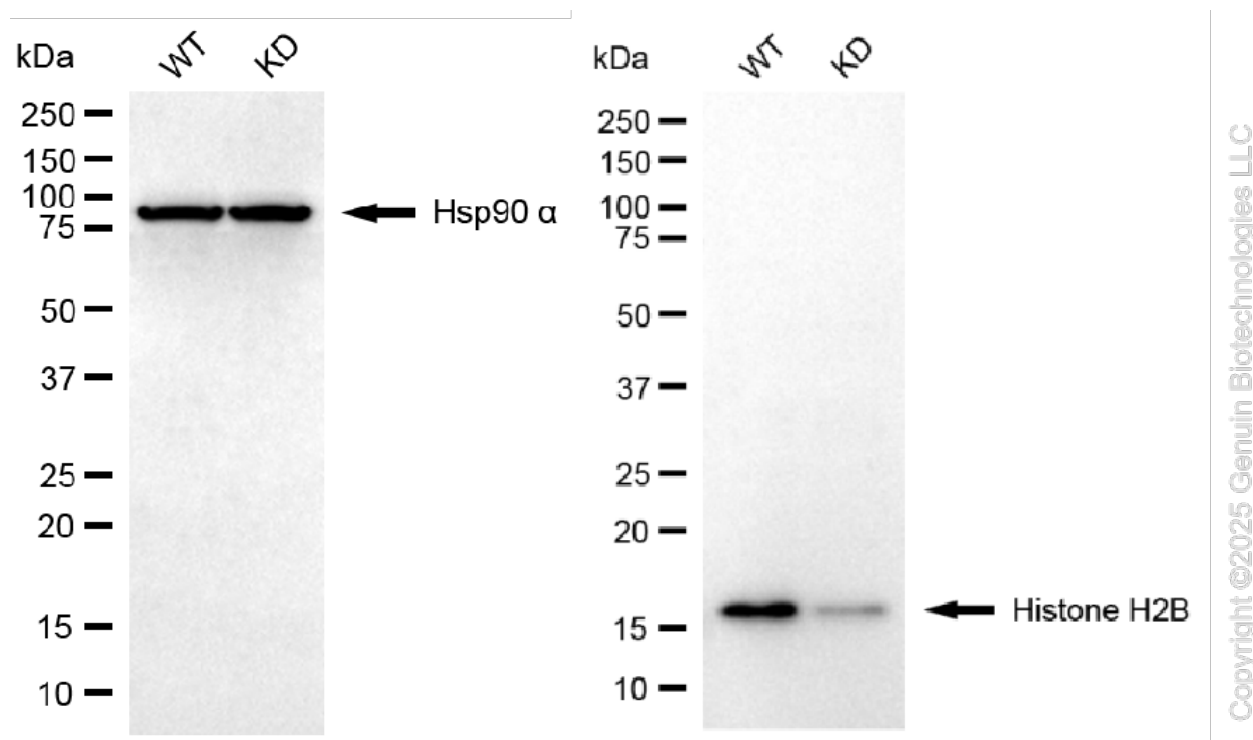
ORDERS

SALES@GENUINBIOTECH.COM
FAX: +1-540-855-7041

WWW.GENUINBIOTECH.COM

KD-Validated Anti-H2B Clustered Histone 12 Recombinant Rabbit Monoclonal Antibody

PAGE 4



Western blotting analysis using anti-histone H2B antibody (Cat#61586). Histone H2B expression in wild type (WT) and H2BC12 knockdown (KD) HSHC cells with 20 µg of total cell lysates. Hsp90 α serves as a loading control. The blot was incubated with anti-histone H2B antibody (Cat#61586, 1:20,000) and HRP-conjugated goat anti-rabbit secondary antibody (Cat#201, 1:20,000) respectively. Image was developed using FeQ™ ECL Substrate Kit (Cat#226).

SUPPORT

SUPPORT@GENUINBIOTECH.COM
TEL: +1-540-855-7041

ORDERS

SALES@GENUINBIOTECH.COM
FAX: +1-540-855-7041

WWW.GENUINBIOTECH.COM