

# KD-Validated Anti-MAP2K2 Recombinant Rabbit Monoclonal Antibody



**Catalog #: 61587**

## Aliases

MAP2K2; Mitogen-Activated Protein Kinase Kinase 2; MEK2; MAP Kinase Kinase 2; PRKMK2; MKK2; Dual Specificity Mitogen-Activated Protein Kinase Kinase 2; ERK Activator Kinase 2; MAPK/ERK Kinase 2; EC 2.7.12.2; Mitogen-Activated Protein Kinase Kinase 2, P45; MAPKK 2; MAPKK2; MEK 2; CFC4

## Background

Gene Name: MAP2K2

NCBI Gene Entry: [5605](#)

UniProt Entry: [P36507](#)

## Application Information

Molecular Weight: Predicted, 44 kDa, observed, 44 kDa

Clonality: Rabbit monoclonal antibody

Clone ID: 25GB2935

Species Reactivity: Human, mouse

Applications Tested: Western blotting (WB), flow cytometry (FCM), immunocytochemistry (IC)

## Immunogen

A synthesized peptide derived from human MEK2

## Isotype

Rabbit IgG

## Storage Buffer

Supplied in PBS (pH 7.4) containing 50% glycerol, and 0.02% sodium azide.

## Storage

Store at -20 °C for one year.

## Recommended Dilutions

Western blotting (WB): 1:1,000-1:5,000

Flow Cytometry (FCM): 1:2,000

Immunocytochemistry (IC): 1:100-1:1,000

---

### SUPPORT

SUPPORT@GENUINBIOTECH.COM  
TEL: +1-540-855-7041

### ORDERS

SALES@GENUINBIOTECH.COM  
FAX: +1-540-855-7041

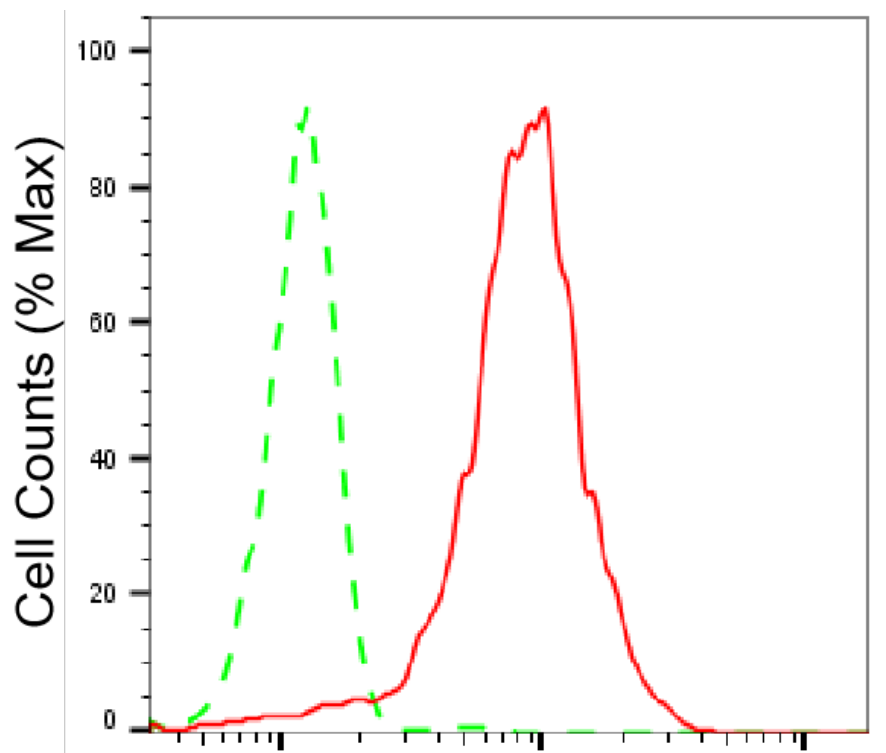
[WWW.GENUINBIOTECH.COM](http://WWW.GENUINBIOTECH.COM)

## KD-Validated Anti-MAP2K2 Recombinant Rabbit Monoclonal Antibody

PAGE 2

**Note:** This product is for research use only.

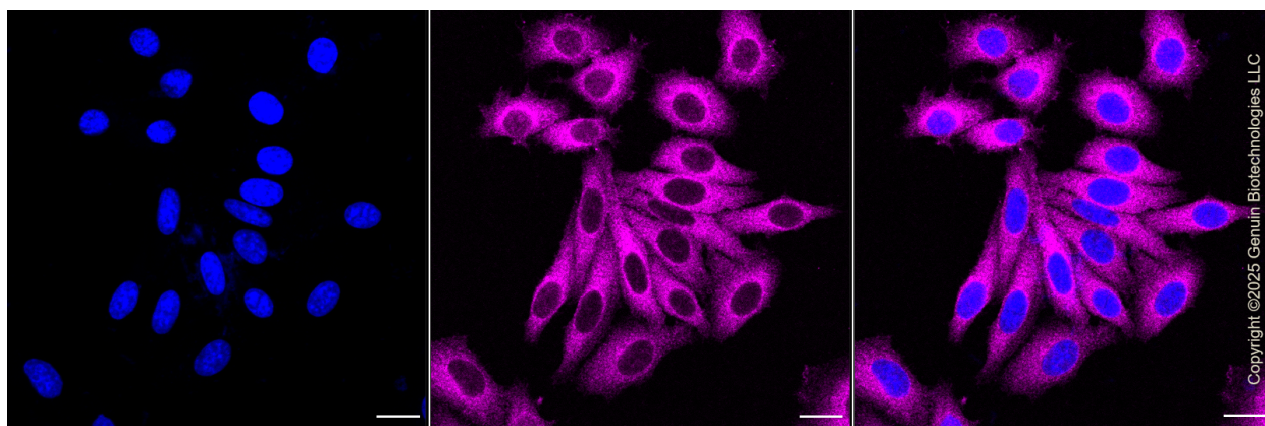
### Validation Data



Copyright ©2025 Genuin Biotechnologies LLC

### MAP2K2-Alexa Fluor® 647

Flow cytometric analysis of MAP2K2 expression in HepG2 cells using anti-MAP2K2 antibody (Cat#61587, 1:2,000). Green, isotype control; red, MAP2K2.



Copyright ©2025 Genuin Biotechnologies LLC

Immunocytochemical staining of HepG2 cells with anti-MAP2K2 antibody (Cat#61587, 1:1,000). Nuclei were stained blue with DAPI; MAP2K2 was stained magenta with Alexa Fluor® 647. Images were taken using Leica stellaris 5. Protein abundance based on laser Intensity and smart gain: Medium. Scale bar, 20 µm.

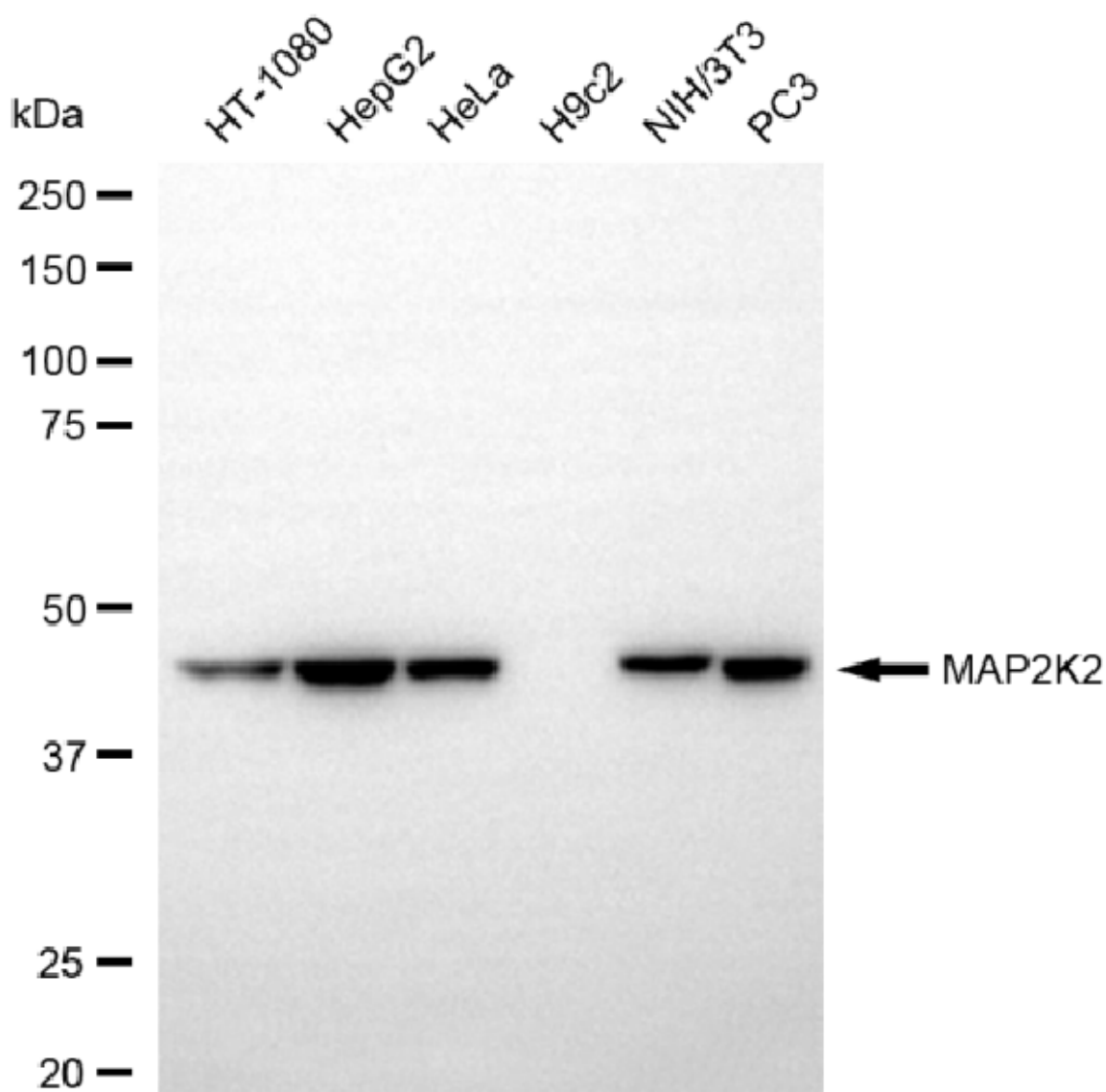
#### SUPPORT

SUPPORT@GENUINBIOTECH.COM  
TEL: +1-540-855-7041

#### ORDERS

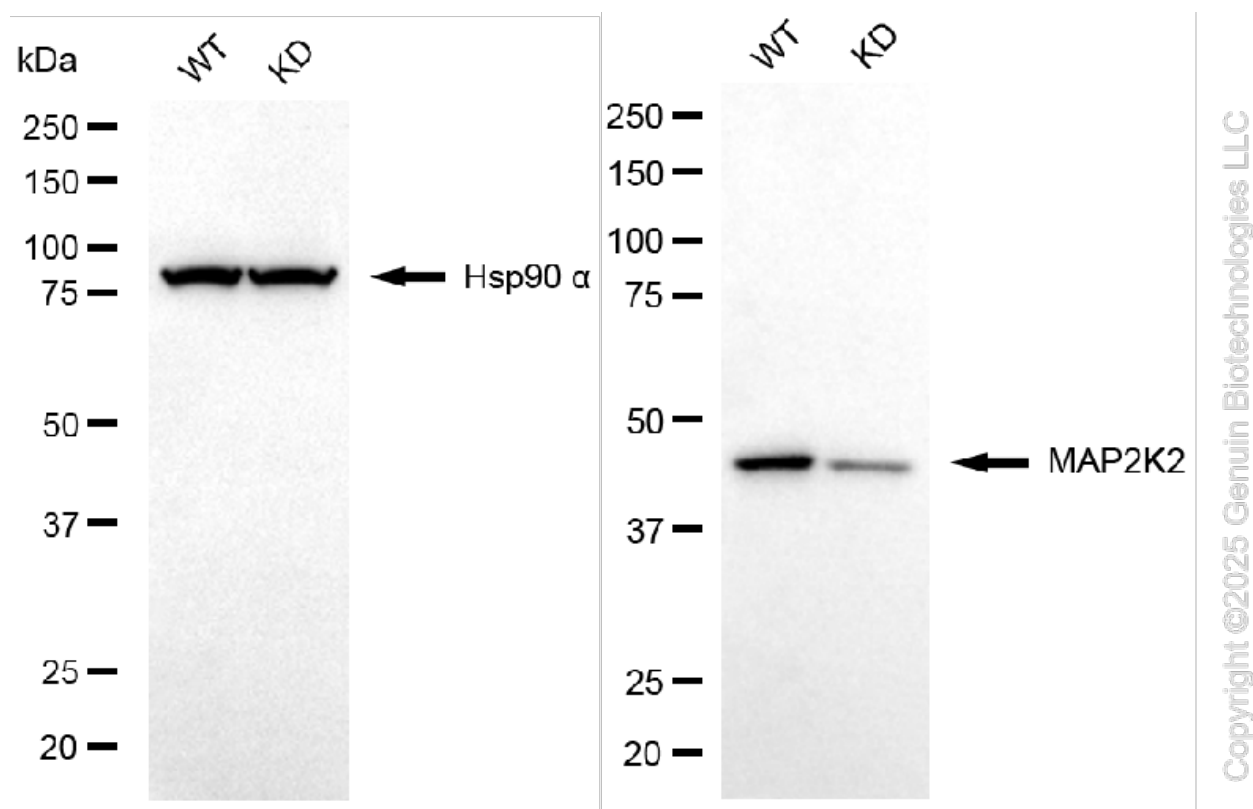
SALES@GENUINBIOTECH.COM  
FAX: +1-540-855-7041

[WWW.GENUINBIOTECH.COM](http://WWW.GENUINBIOTECH.COM)



Copyright ©2025 Genuin Biotechnologies LLC

Western blotting analysis using anti-MAP2K2 antibody (Cat#61587). Total cell lysates (30 µg) from various cell lines were loaded and separated by SDS-PAGE. The blot was incubated with anti-MAP2K2 antibody (Cat#61587, 1:5,000) and HRP-conjugated goat anti-rabbit secondary antibody (Cat#201, 1:20,000) respectively. Image was developed using NaQ™ ECL Substrate Kit (Cat#716).



Western blotting analysis using anti-MAP2K2 antibody (Cat#61587). MAP2K2 expression in wild-type (WT) and MAP2K2 knockdown (KD) 293T cells with 20  $\mu$ g of total cell lysates. Hsp90  $\alpha$  serves as a loading control. The blot was incubated with anti-MAP2K2 antibody (Cat#61587, 1:5,000) and HRP-conjugated goat anti-rabbit secondary antibody (Cat#201, 1:20,000) respectively. Image was developed using NaQ<sup>TM</sup> ECL Substrate Kit (Cat#716).