

KD-Validated Anti-Cell Division Cycle 45 Recombinant Rabbit Monoclonal Antibody



Catalog #: 61590

Aliases

CDC45; Cell Division Cycle 45; CDC45L2; CDC45L; Cell Division Control Protein 45 Homolog; Human CDC45; PORC-PI-1; CDC45 (Cell Division Cycle 45, S.Cerevisiae, Homolog)-Like; CDC45 Cell Division Cycle 45-Like (S. Cerevisiae); Cell Division Cycle 45 Homolog (S. Cerevisiae); CDC45 Cell Division Cycle 45 Homolog; CDC45 Cell Division Cycle 45-Like; Cell Division Cycle 45 Homolog; Cell Division Cycle 45-Like 2; CDC45-Related Protein; MGORS7

Background

Gene Name: CDC45

NCBI Gene Entry: [8318](#)

UniProt Entry: [O75419](#)

Application Information

Molecular Weight: Predicted, 66 kDa, observed, 65 kDa

Clonality: Rabbit monoclonal antibody

Clone ID: 25GB2945

Species Reactivity: Human, mouse, rat

Applications Tested: Western blotting (WB), flow cytometry (FCM), immunocytochemistry (IC)

Immunogen

A synthesized peptide derived from human CDC45

Isotype

Rabbit IgG

Storage Buffer

Supplied in PBS (pH 7.4) containing 50% glycerol, and 0.02% sodium azide.

Storage

Store at -20 °C for one year.

Recommended Dilutions

Western blotting (WB): 1:1,000-1:5,000

Flow Cytometry (FCM): 1:2,000

Immunocytochemistry (IC): 1:100-1:1,000

SUPPORT

SUPPORT@GENUINBIOTECH.COM
TEL: +1-540-855-7041

ORDERS

SALES@GENUINBIOTECH.COM
FAX: +1-540-855-7041

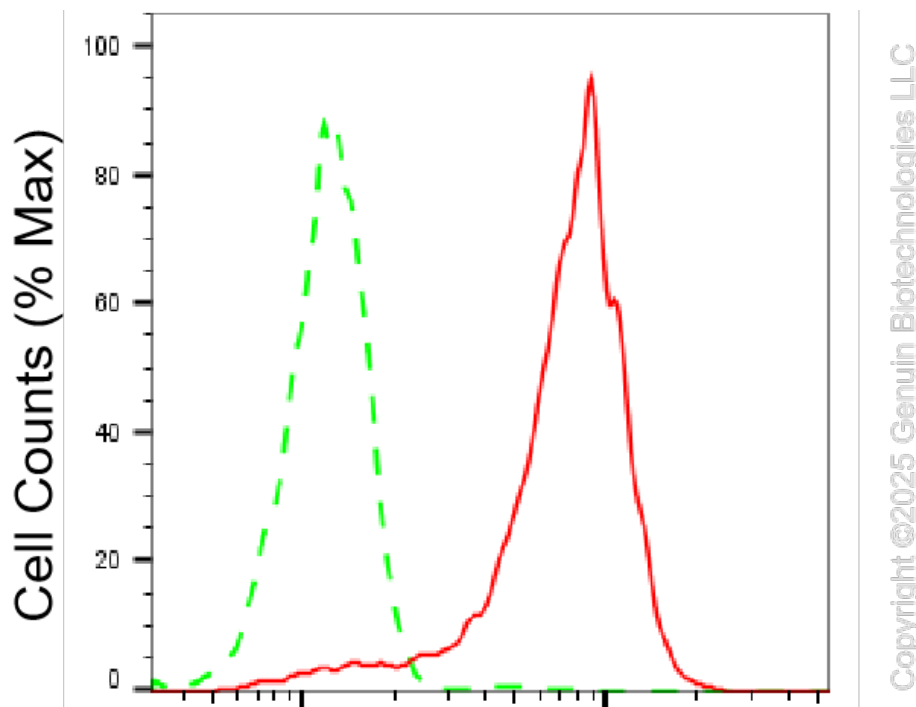
WWW.GENUINBIOTECH.COM

KD-Validated Anti-Cell Division Cycle 45 Recombinant Rabbit Monoclonal Antibody

PAGE 2

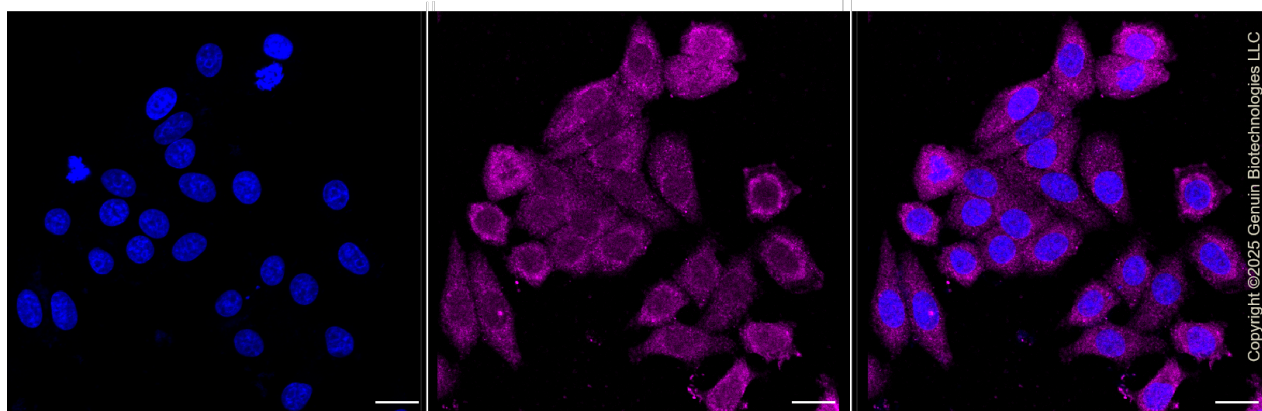
Note: This product is for research use only.

Validation Data



Cell division cycle 45-Alexa Fluor® 647

Flow cytometric analysis of Cell division cycle 45 expression in HepG2 cells using anti-Cell division cycle 45 antibody (Cat#61590, 1:2,000). Green, isotype control; red, Cell division cycle 45.



Immunocytochemical staining of HepG2 cells with anti-Cell division cycle 45 antibody (Cat#61590, 1:1,000). Nuclei were stained blue with DAPI; Cell division cycle 45 was stained magenta with Alexa Fluor® 647. Images were taken using Leica stellaris 5. Protein abundance

SUPPORT

SUPPORT@GENUINBIOTECH.COM
TEL: +1-540-855-7041

ORDERS

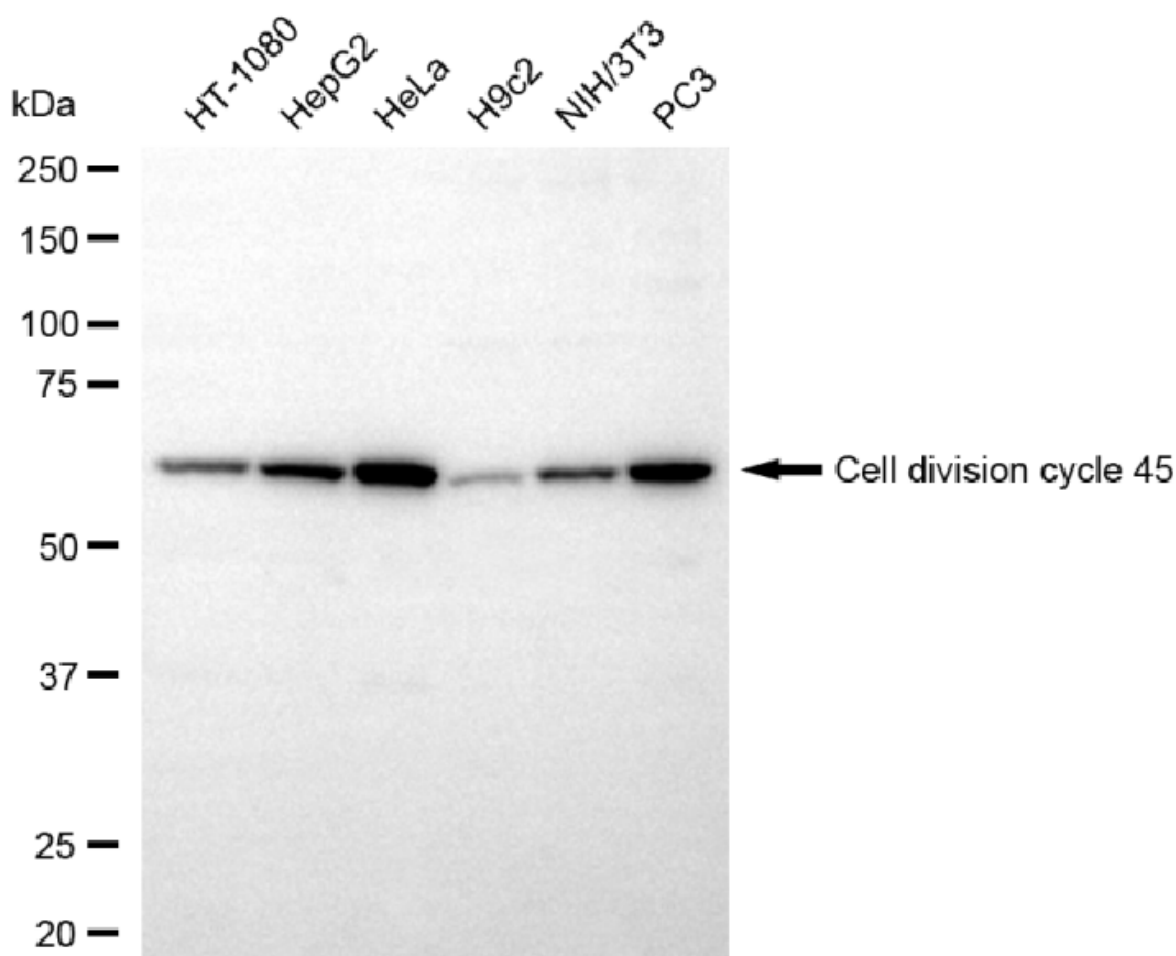
SALES@GENUINBIOTECH.COM
FAX: +1-540-855-7041

WWW.GENUINBIOTECH.COM

KD-Validated Anti-Cell Division Cycle 45 Recombinant Rabbit Monoclonal Antibody

PAGE 3

based on laser Intensity and smart gain: Medium. Scale bar, 20 μ m.



Copyright ©2025 Genuin Biotechnologies LLC

Western blotting analysis using anti-cell division cycle 45 antibody (Cat#61590). Total cell lysates (30 μ g) from various cell lines were loaded and separated by SDS-PAGE. The blot was incubated with anti-cell division cycle 45 antibody (Cat#61590, 1:5,000) and HRP-conjugated goat anti-rabbit secondary antibody (Cat#201, 1:20,000) respectively. Image was developed using NaQ™ ECL Substrate Kit (Cat#716).

SUPPORT

SUPPORT@GENUINBIOTECH.COM
TEL: +1-540-855-7041

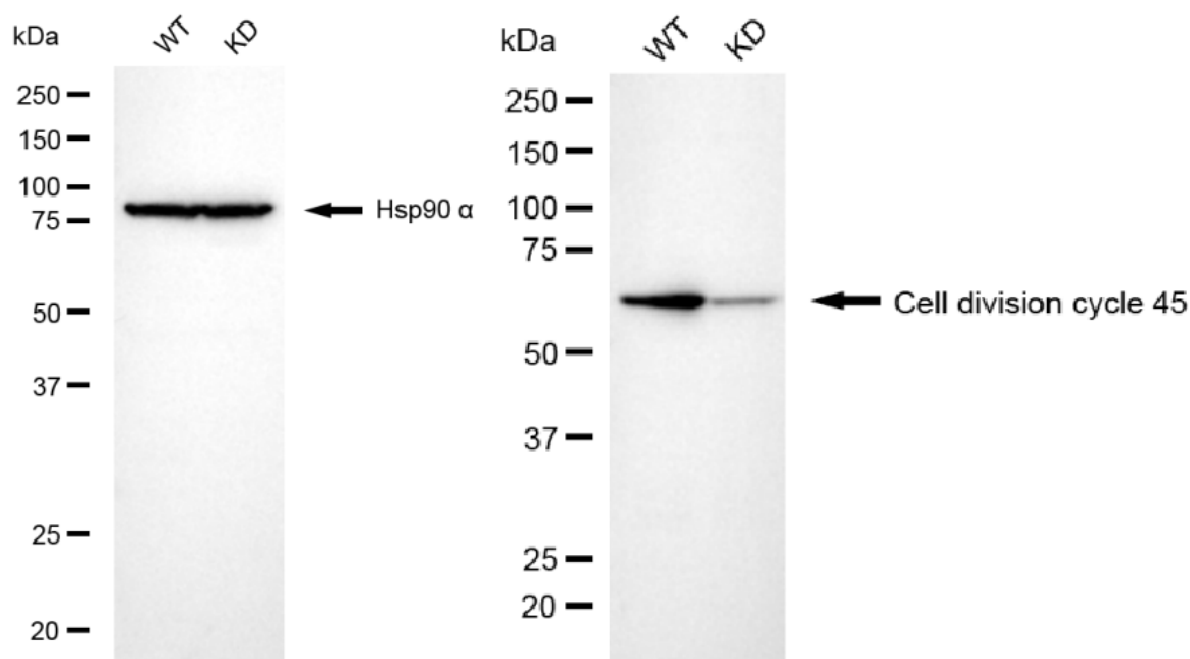
ORDERS

SALES@GENUINBIOTECH.COM
FAX: +1-540-855-7041

WWW.GENUINBIOTECH.COM

KD-Validated Anti-Cell Division Cycle 45 Recombinant Rabbit Monoclonal Antibody

PAGE 4



Copyright ©2025 Genuin Biotechnologies LLC

Western blotting analysis using anti-cell division cycle 45 antibody (Cat#61590). Cell division cycle 45 expression in wild type (WT) and cell division cycle 45 (CDC45) knockdown (KD) HSHC cells with 20 µg of total cell lysates. Hsp90 α serves as a loading control. The blot was incubated with anti-cell division cycle 45 antibody (Cat#61590, 1:5,000) and HRP-conjugated goat anti-rabbit secondary antibody (Cat#201, 1:20,000) respectively. Image was developed using NaQ™ ECL Substrate Kit (Cat#716).

SUPPORT

SUPPORT@GENUINBIOTECH.COM
TEL: +1-540-855-7041

ORDERS

SALES@GENUINBIOTECH.COM
FAX: +1-540-855-7041

WWW.GENUINBIOTECH.COM