

# KD-Validated Anti-Endothelin Receptor Type B Recombinant Rabbit Monoclonal Antibody



**Catalog #: 61592**

## Aliases

EDNRB; Endothelin Receptor Type B; ETB; Endothelin Receptor Non-Selective Type; ET-BR; HSCR2; ET-B; ETRB; HSCR; Endothelin Receptor Subtype B1; Hirschsprung Disease 2; ABCDS; ETB1; ETBR; WS4A

## Background

Gene Name: EDNRB

NCBI Gene Entry: [1910](#)

UniProt Entry: [P24530](#)

## Application Information

Molecular Weight: Predicted, 50 kDa; observed, 50 kDa

Clonality: Rabbit monoclonal antibody

Clone ID: 25GB2960

Species Reactivity: Human, mouse, rat

Applications Tested: Western blotting (WB), flow cytometry (FCM), immunocytochemistry (IC)

## Immunogen

A synthesized peptide derived from human Endothelin B Receptor

## Isotype

Rabbit IgG

## Storage Buffer

Supplied in PBS (pH 7.4) containing 50% glycerol, and 0.02% sodium azide.

## Storage

Store at -20 °C for one year.

## Recommended Dilutions

Western blotting (WB): 1:1,000-1:5,000

Flow Cytometry (FCM): 1:2,000

Immunocytochemistry (IC): 1:100-1:1,000

**Note:** This product is for research use only.

---

### SUPPORT

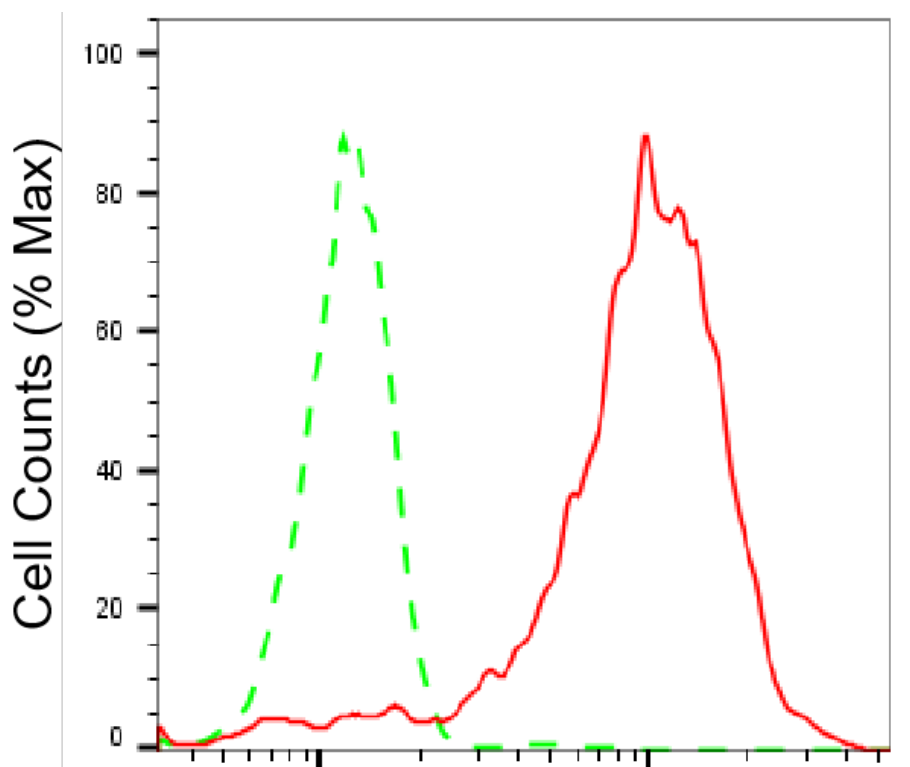
SUPPORT@GENUINBIOTECH.COM  
TEL: +1-540-855-7041

### ORDERS

SALES@GENUINBIOTECH.COM  
FAX: +1-540-855-7041

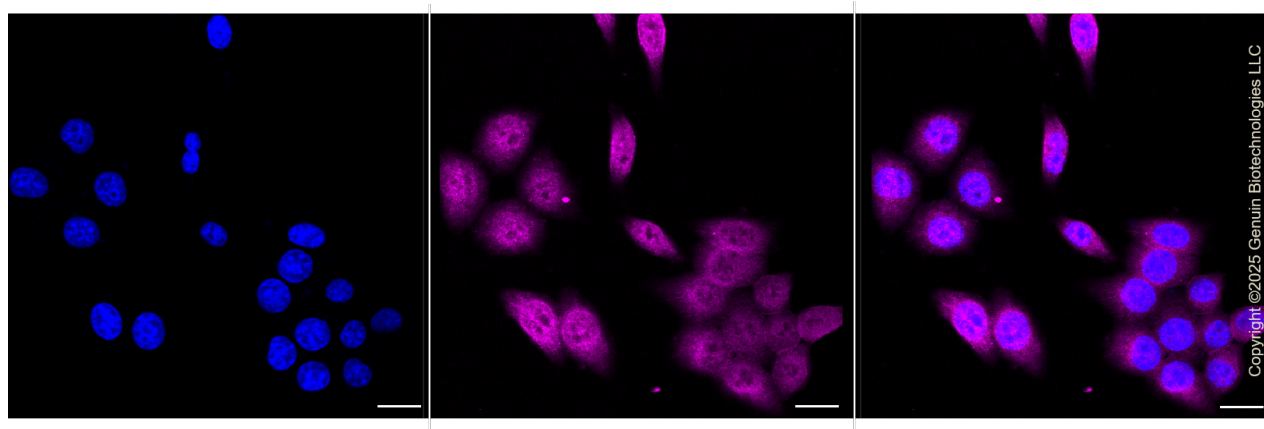
[WWW.GENUINBIOTECH.COM](http://WWW.GENUINBIOTECH.COM)

**Validation Data**



**Endothelin receptor type B-Alexa Fluor® 647**

Flow cytometric analysis of Endothelin receptor type B expression in HepG2 cells using anti-Endothelin receptor type B antibody (Cat#61592, 1:2,000). Green, isotype control; red, Endothelin receptor type B.



Immunocytochemical staining of HepG2 cells with anti-Endothelin receptor type B1 antibody (Cat#61592, 1:1,000). Nuclei were stained blue with DAPI; Endothelin receptor type B was stained magenta with Alexa Fluor® 647. Images were taken using Leica stellaris 5. Protein abundance based on laser Intensity and smart gain: High. Scale bar, 20  $\mu$ m.

**SUPPORT**

SUPPORT@GENUINBIOTECH.COM  
TEL: +1-540-855-7041

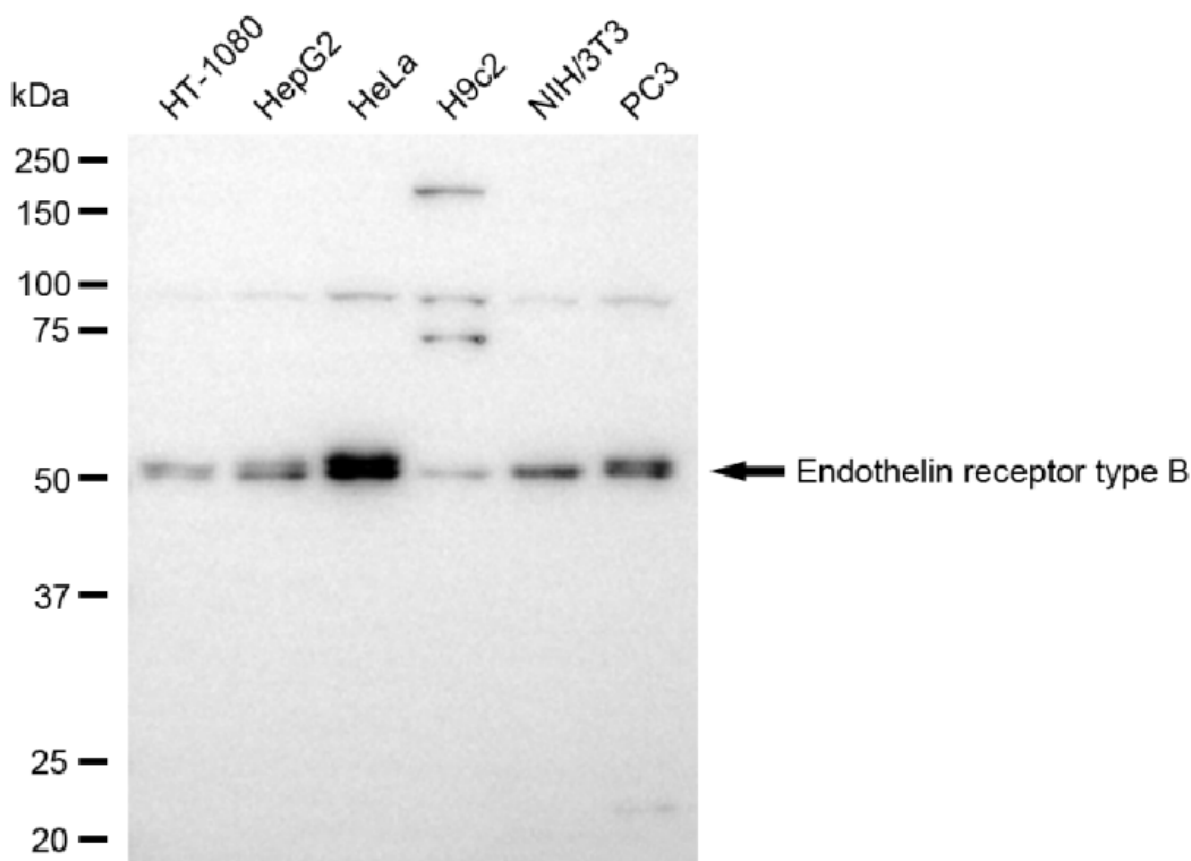
**ORDERS**

SALES@GENUINBIOTECH.COM  
FAX: +1-540-855-7041

**WWW.GENUINBIOTECH.COM**

## KD-Validated Anti-Endothelin Receptor Type B Recombinant Rabbit Monoclonal Antibody

PAGE 3



Copyright ©2025 Genuin Biotechnologies LLC

Western blotting analysis using anti-endothelin receptor type B antibody (Cat#61592). Total cell lysates (20 µg) from various cell lines were loaded and separated by SDS-PAGE. The blot was incubated with anti-endothelin receptor type B antibody (Cat#61592, 1:5,000) and HRP-conjugated goat anti-rabbit secondary antibody (Cat#201, 1:20,000) respectively. Image was developed using NaQ™ ECL Substrate Kit (Cat#716).

### SUPPORT

SUPPORT@GENUINBIOTECH.COM  
TEL: +1-540-855-7041

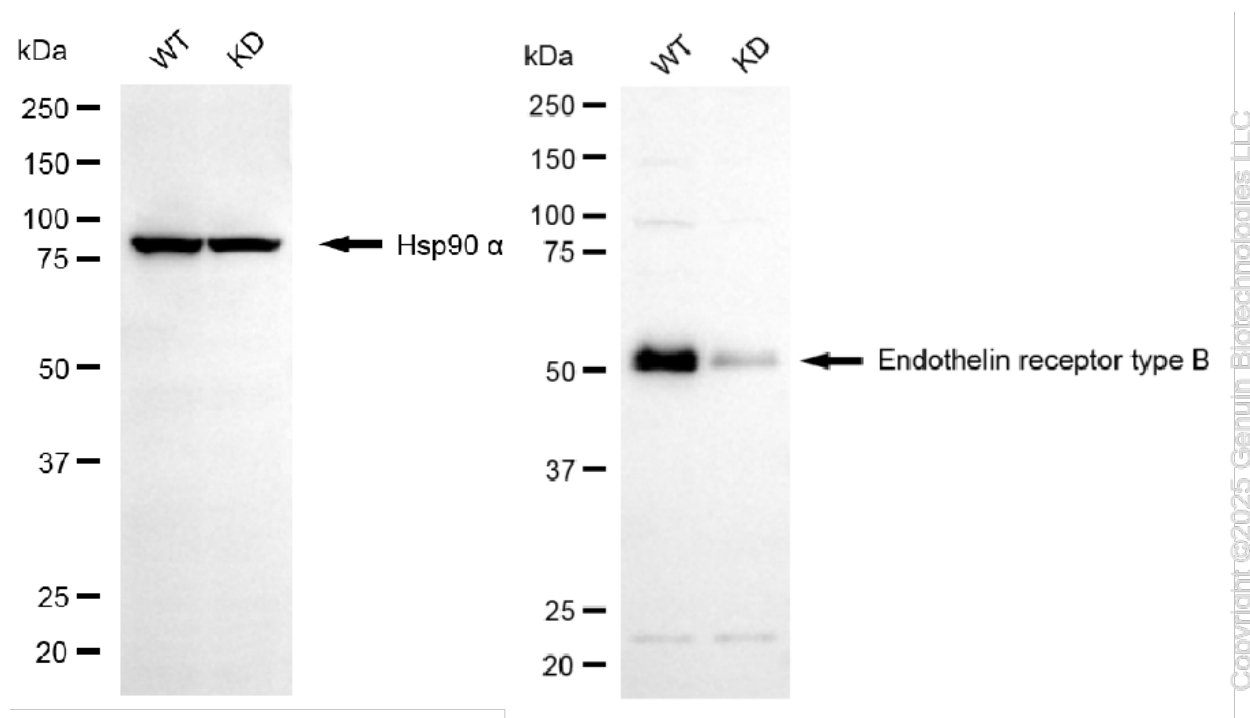
### ORDERS

SALES@GENUINBIOTECH.COM  
FAX: +1-540-855-7041

[WWW.GENUINBIOTECH.COM](http://WWW.GENUINBIOTECH.COM)

## KD-Validated Anti-Endothelin Receptor Type B Recombinant Rabbit Monoclonal Antibody

PAGE 4



Western blotting analysis using anti-endothelin receptor type B antibody (Cat#61592). Endothelin receptor type B expression in wild-type (WT) and endothelin receptor type B (EDNRB) knockdown (KD) HeLa cells with 20 µg of total cell lysates. Hsp90 α serves as a loading control. The blot was incubated with anti-endothelin receptor type B antibody (Cat#61592, 1:5,000) and HRP-conjugated goat anti-rabbit secondary antibody (Cat#201, 1:20,000) respectively. Image was developed using NaQ™ ECL Substrate Kit (Cat#716).

### SUPPORT

SUPPORT@GENUINBIOTECH.COM  
TEL: +1-540-855-7041

### ORDERS

SALES@GENUINBIOTECH.COM  
FAX: +1-540-855-7041

[WWW.GENUINBIOTECH.COM](http://WWW.GENUINBIOTECH.COM)