

KD-Validated Anti-ABCC1 Recombinant Rabbit Monoclonal Antibody



Catalog #: 61594

Aliases

ABCC1; ATP Binding Cassette Subfamily C Member 1 (ABCC1 Blood Group); GS-X; MRP1; MRP; ATP-Binding Cassette, Sub-Family C (CFTR/MRP), Member 1; Glutathione-S-Conjugate-Translocating ATPase ABCC1; ATP Binding Cassette Subfamily C Member 1; Multidrug Resistance-Associated Protein 1; Glutathione S-Conjugate Export Pump; Leukotriene C(4) Transporter; LTC4 Transporter; ATP-Binding Cassette Transporter Variant ABCC1delta-Ex13&14; ATP-Binding Cassette Transporter Variant ABCC1delta-Ex25&26; ATP-Binding Cassette Transporter Variant ABCC1delta-Ex13; ATP-Binding Cassette Transporter Variant ABCC1delta-Ex25; ATP-Binding Cassette Sub-Family C Member 1; Multidrug Resistance Associated Protein 1; EC 3.6.3.44; EC 7.6.2.2; EC 7.6.2.3; EC 3.6.3; DFNA77; ABC29; ABCC

Background

Gene Name: ABCC1

NCBI Gene Entry: [4363](#)

UniProt Entry: [P33527](#)

Application Information

Molecular Weight: Predicted, 172 kDa, observed, 171 kDa

Clonality: Rabbit monoclonal antibody

Clone ID: 25GB2970

Species Reactivity: Human

Applications Tested: Western blotting (WB), flow cytometry (FCM)

Immunogen

A synthesized peptide derived from human MRP1

Isotype

Rabbit IgG

Storage Buffer

Supplied in PBS (pH 7.4) containing 50% glycerol, and 0.02% sodium azide.

Storage

Store at -20 °C for one year.

Recommended Dilutions

SUPPORT

SUPPORT@GENUINBIOTECH.COM
TEL: +1-540-855-7041

ORDERS

SALES@GENUINBIOTECH.COM
FAX: +1-540-855-7041

WWW.GENUINBIOTECH.COM

KD-Validated Anti-ABCC1 Recombinant Rabbit Monoclonal Antibody

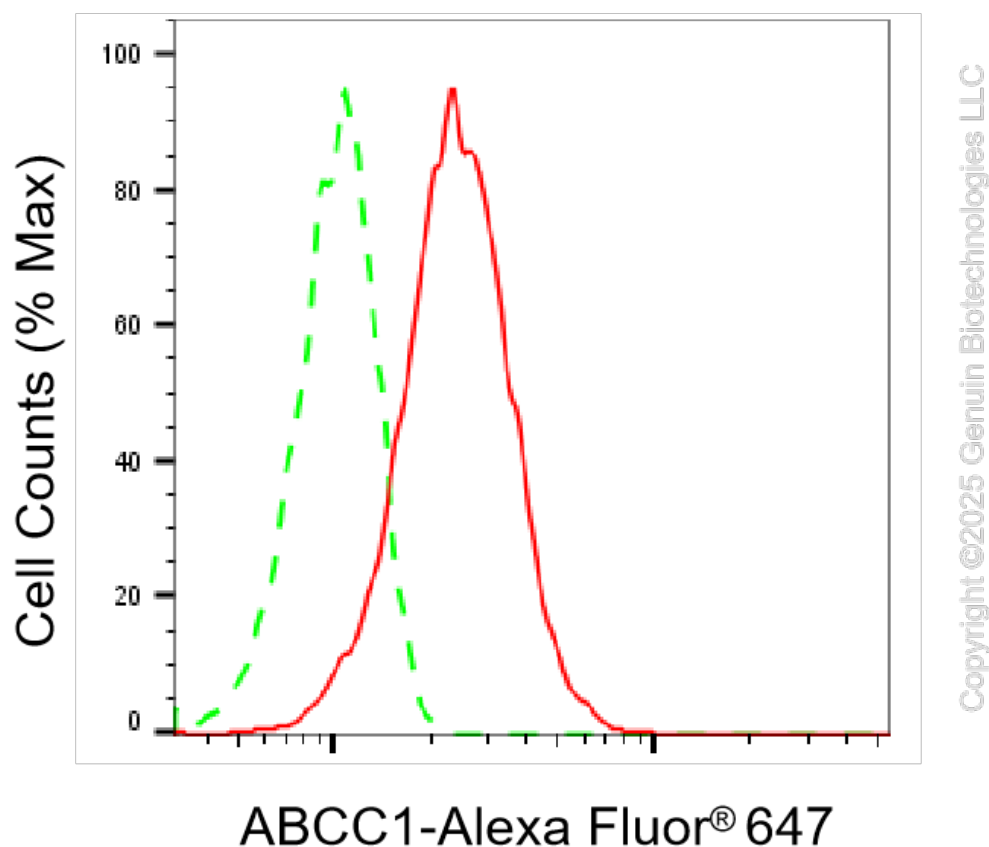
PAGE 2

Western blotting (WB): 1:1,000-1:5,000

Flow Cytometry (FCM): 1:2,000

Note: This product is for research use only.

Validation Data



Flow cytometric analysis of ABCC1 expression in HeLa cells using anti-ABCC1 antibody (Cat#61594, 1:2,000). Green, isotype control; red, ABCC1.

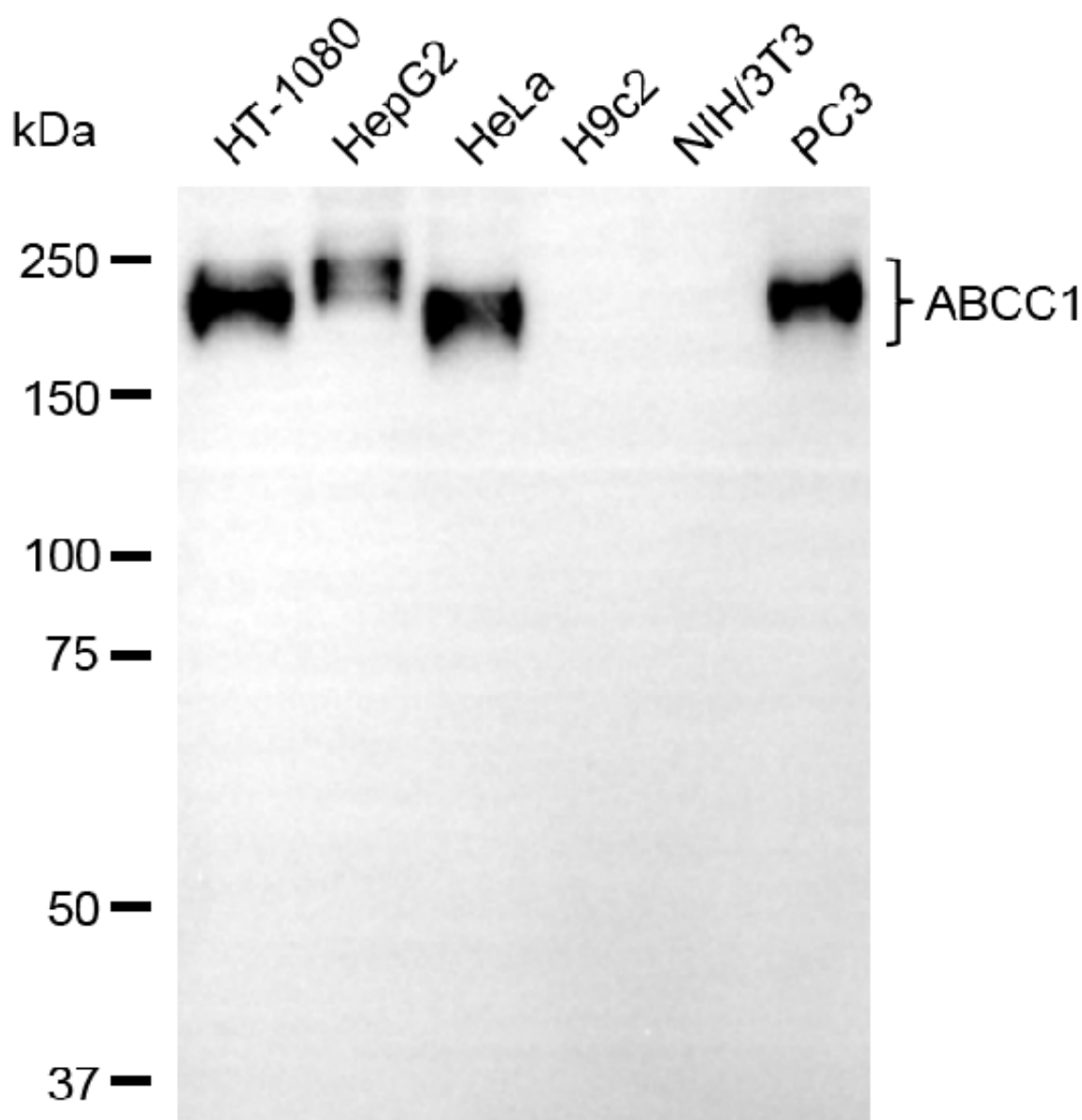
SUPPORT

SUPPORT@GENUINBIOTECH.COM
TEL: +1-540-855-7041

ORDERS

SALES@GENUINBIOTECH.COM
FAX: +1-540-855-7041

WWW.GENUINBIOTECH.COM



Copyright ©2025 Genuin Biotechnologies LLC

Western blotting analysis using anti-ABCC1 antibody (Cat#61594). Total cell lysates (30 μ g) from various cell lines were loaded and separated by SDS-PAGE. The blot was incubated with anti-ABCC1 antibody (Cat#61594, 1:5,000) and HRP-conjugated goat anti rabbit secondary antibody (Cat#201, 1:20,000) respectively. Image was developed using NaQ™ ECL Substrate Kit (Cat#716).

SUPPORT

SUPPORT@GENUINBIOTECH.COM
TEL: +1-540-855-7041

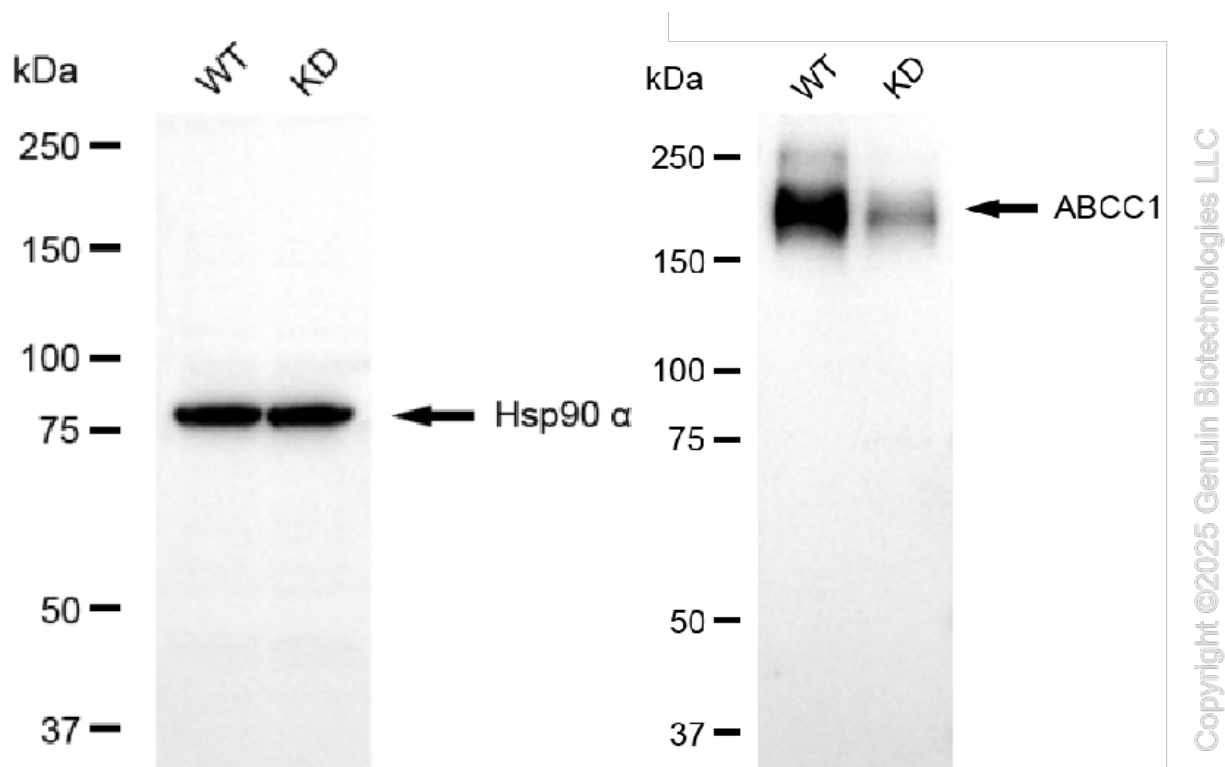
ORDERS

SALES@GENUINBIOTECH.COM
FAX: +1-540-855-7041

WWW.GENUINBIOTECH.COM

KD-Validated Anti-ABCC1 Recombinant Rabbit Monoclonal Antibody

PAGE 4



Western blotting analysis using anti-ABCC1 antibody (Cat#61594). ABCC1 expression in wild type (WT) and ABCC1 knockdown (KD) HSHC cells with 20 μ g of total cell lysates. Hsp90 α serves as a loading control. The blot was incubated with anti-ABCC1 antibody (Cat#61594, 1:5,000) and HRP-conjugated goat anti-rabbit secondary antibody (Cat#201, 1:20,000) respectively. Image was developed using FeQ™ ECL Substrate Kit (Cat#226).

SUPPORT

SUPPORT@GENUINBIOTECH.COM
TEL: +1-540-855-7041

ORDERS

SALES@GENUINBIOTECH.COM
FAX: +1-540-855-7041

WWW.GENUINBIOTECH.COM