

KD-Validated Anti-Activin A Receptor Like Type 1 Recombinant Rabbit Monoclonal



Catalog #: 61595

Aliases

ACVRL1; Activin A Receptor Like Type 1; ALK1; ACVRLK1; HHT2; HHT; Serine/Threonine-Protein Kinase Receptor R3; Activin A Receptor Type II-Like 1; TGF-B Superfamily Receptor Type I; Activin Receptor-Like Kinase 1; Activin A Receptor Type IL; EC 2.7.11.30; ALK-1; TSR-I; ORW2; SKR3; Activin A Receptor, Type II-Like Kinase 1; EC 2.7.11

Background

Gene Name: ACVRL1

NCBI Gene Entry: [94](#)

UniProt Entry: [P37023](#)

Application Information

Molecular Weight: Predicted, 56 kDa, observed, 63 kDa

Clonality: Rabbit monoclonal antibody

Clone ID: 25GB2975

Species Reactivity: Human, mouse, rat

Applications Tested: Western blotting (WB), immunocytochemistry (IC)

Immunogen

A synthesized peptide derived from human ACVRL1

Isotype

Rabbit IgG

Storage Buffer

Supplied in PBS (pH 7.4) containing 50% glycerol, and 0.02% sodium azide.

Storage

Store at -20 °C for one year.

Recommended Dilutions

Western blotting (WB): 1:1,000-1:5,000

Immunocytochemistry (IC): 1:100-1:1,000

Note: This product is for research use only.

SUPPORT

SUPPORT@GENUINBIOTECH.COM
TEL: +1-540-855-7041

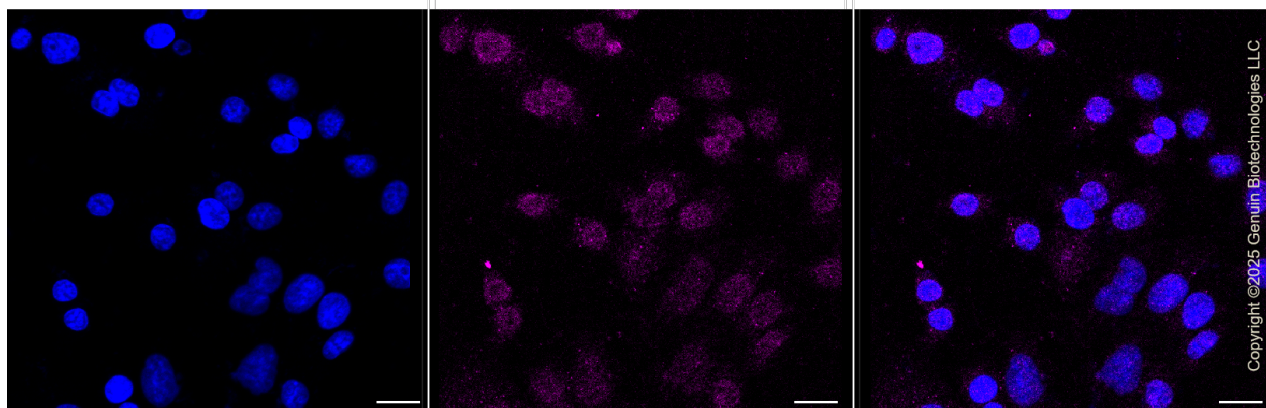
ORDERS

SALES@GENUINBIOTECH.COM
FAX: +1-540-855-7041

WWW.GENUINBIOTECH.COM

KD-Validated Anti-Activin A Receptor Like Type 1 Recombinant Rabbit Monoclonal Validation Data

PAGE 2



Immunocytochemical staining of HepG2 cells with anti-ACVRL1 antibody (Cat#61595, 1:1,000). Nuclei were stained blue with DAPI; ACVRL1 was stained magenta with Alexa Fluor® 647. Images were taken using Leica stellaris 5. Protein abundance based on laser Intensity and smart gain: Low. Scale bar, 20 μ m.

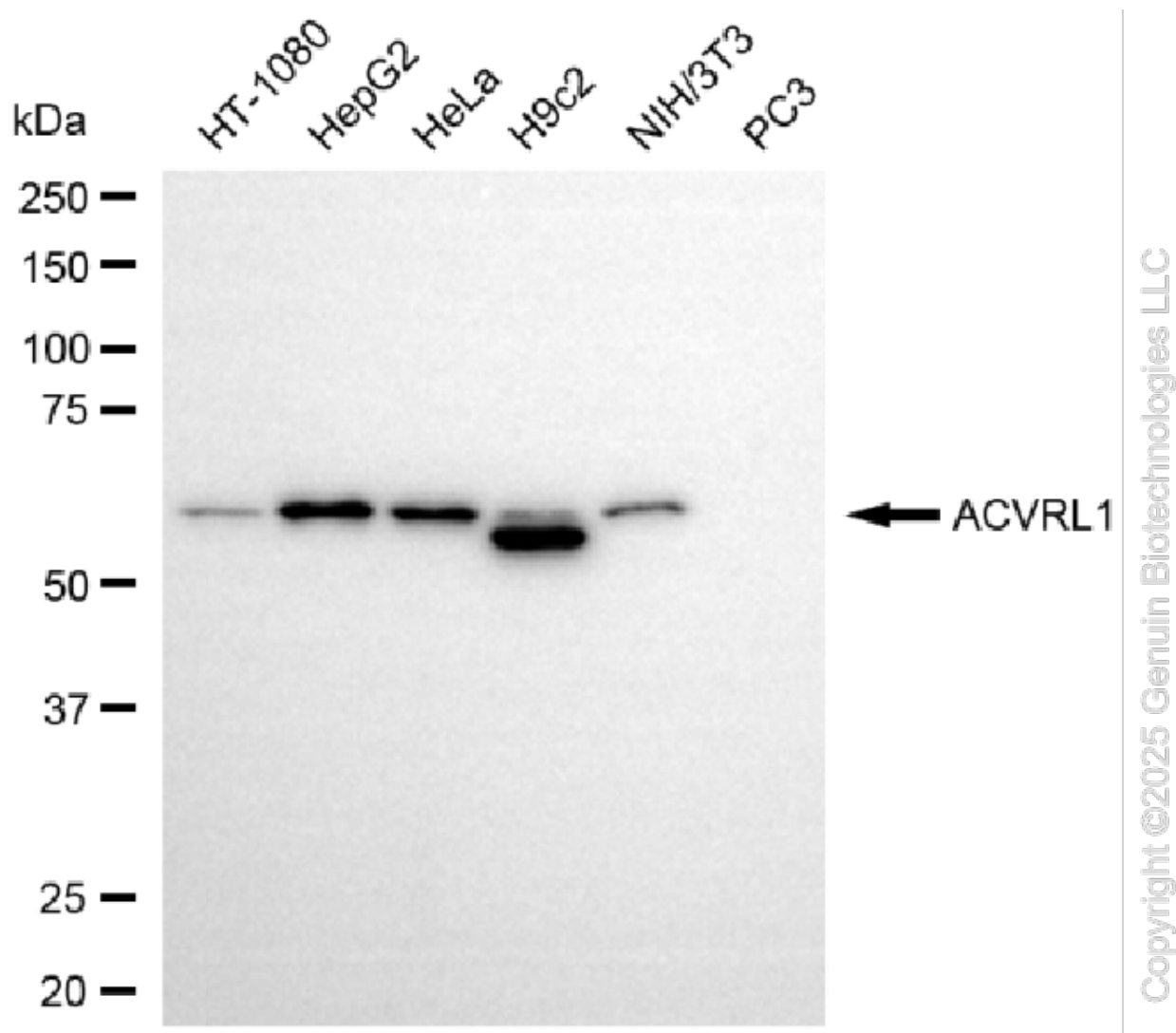
SUPPORT

SUPPORT@GENUINBIOTECH.COM
TEL: +1-540-855-7041

ORDERS

SALES@GENUINBIOTECH.COM
FAX: +1-540-855-7041

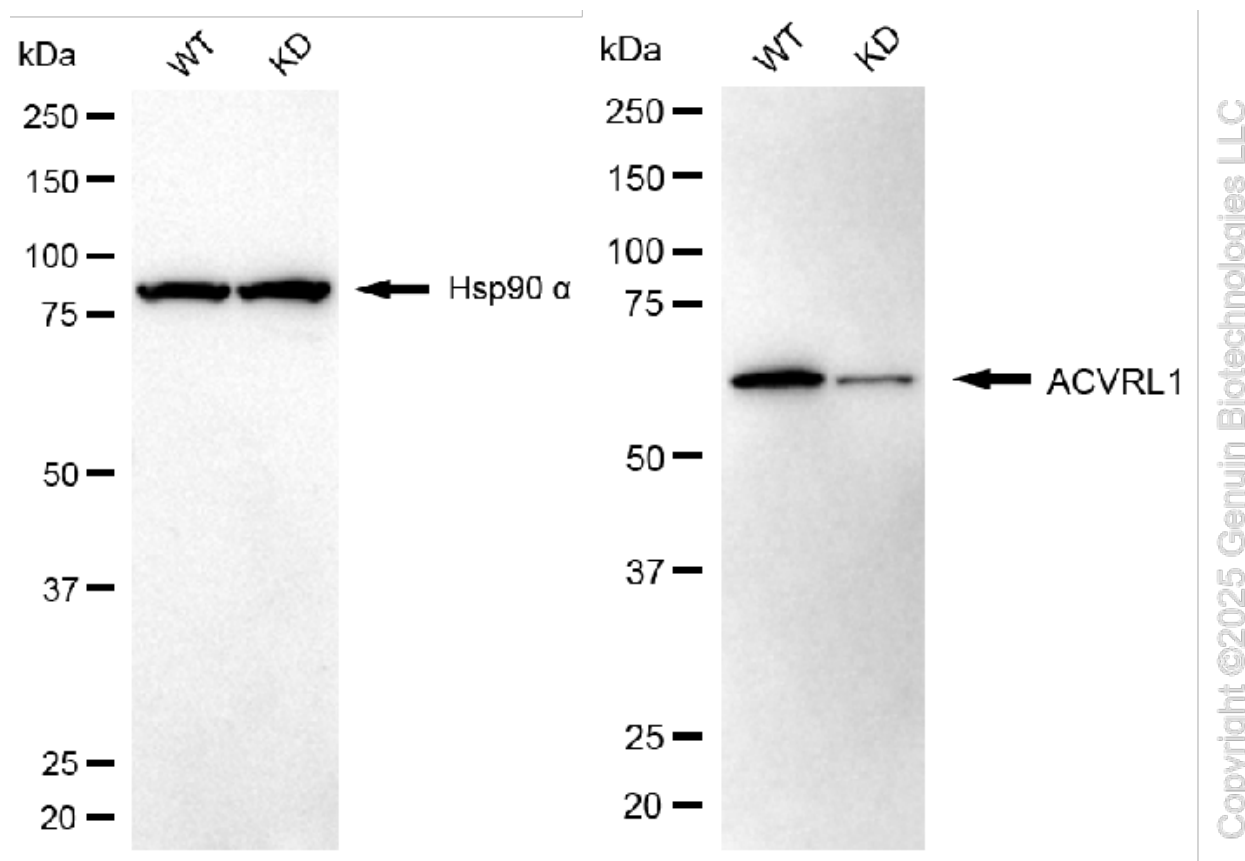
WWW.GENUINBIOTECH.COM



Western blotting analysis using anti-ACVRL1 antibody (Cat#61595). Total cell lysates (30 µg) from various cell lines were loaded and separated by SDS-PAGE. The blot was incubated with anti-ACVRL1 antibody (Cat#61595, 1:5,000) and HRP-conjugated goat anti-rabbit secondary antibody (Cat#201, 1:20,000) respectively. Image was developed using NaQ™ ECL Substrate Kit (Cat#716).

KD-Validated Anti-Activin A Receptor Like Type 1 Recombinant Rabbit Monoclonal

PAGE 4



Western blotting analysis using anti-ACVRL1 antibody (Cat#61595). ACVRL1 expression in wild type (WT) and ACVRL1 knockdown (KD) HSHC cells with 20 µg of total cell lysates. Hsp90 α serves as a loading control. The blot was incubated with anti-ACVRL1 antibody (Cat#61595, 1:5,000) and HRP-conjugated goat anti-rabbit secondary antibody (Cat#201, 1:20,000) respectively. Image was developed using FeQ™ ECL Substrate Kit (Cat#226).

SUPPORT

SUPPORT@GENUINBIOTECH.COM
TEL: +1-540-855-7041

ORDERS

SALES@GENUINBIOTECH.COM
FAX: +1-540-855-7041

WWW.GENUINBIOTECH.COM