

KD-Validated Anti-Dihydropyrimidinase Like 2 Recombinant Rabbit Monoclonal Antibody



Catalog #: 61600

Aliases

DPYSL2; Dihydropyrimidinase Like 2; DRP-2; CRMP2; DHPRP2; DRP2;
Dihydropyrimidinase-Related Protein 2; Unc-33-Like Phosphoprotein 2; CRMP-2; ULIP-2;
ULIP2; N2A3; Collapsin Response Mediator Protein HCRMP-2; Collapsin Response Mediator
Protein 2; Dihydropyrimidinase-Like 2

Background

Gene Name: DPYSL2
NCBI Gene Entry: [1808](#)
UniProt Entry: [Q16555](#)

Application Information

Molecular Weight: Predicted, 62 kDa; observed, 62 kDa
Clonality: Rabbit monoclonal antibody
Clone ID: 25GB2985
Species Reactivity: Human, mouse, rat
Applications Tested: Western blotting (WB), flow cytometry (FCM), immunocytochemistry (IC)

Immunogen

A synthesized peptide derived from human CRMP2

Isotype

Rabbit IgG

Storage Buffer

Supplied in PBS (pH 7.4) containing 50% glycerol, and 0.02% sodium azide.

Storage

Store at -20 °C for one year.

Recommended Dilutions

Western blotting (WB): 1:1,000-1:5,000
Flow Cytometry (FCM): 1:2,000
Immunocytochemistry (IC): 1:100-1:1,000

SUPPORT

SUPPORT@GENUINBIOTECH.COM
TEL: +1-540-855-7041

ORDERS

SALES@GENUINBIOTECH.COM
FAX: +1-540-855-7041

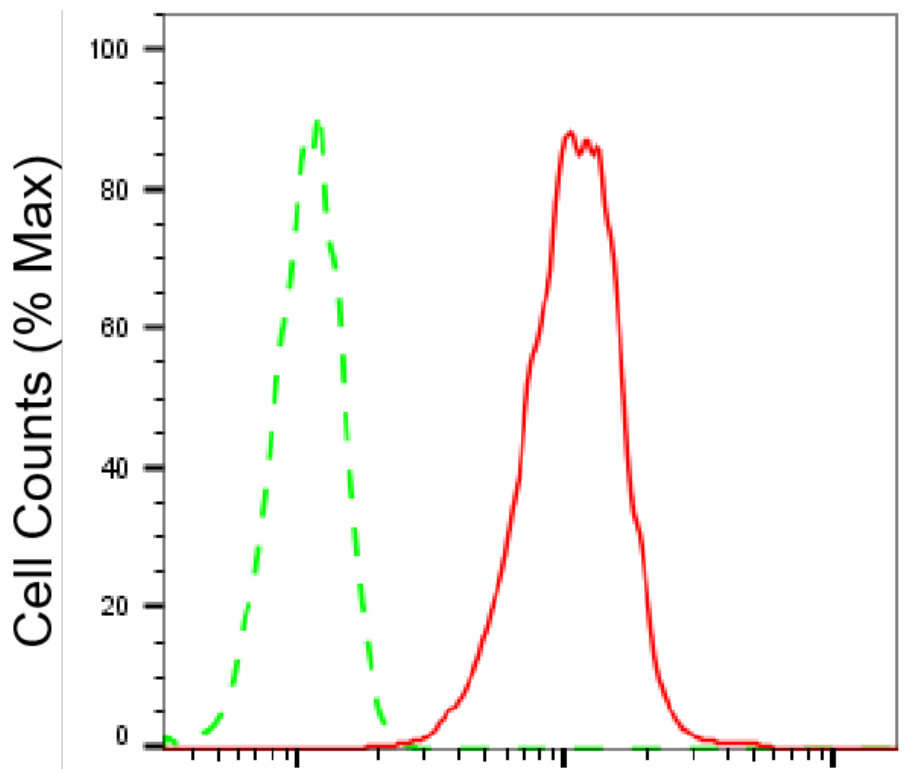
WWW.GENUINBIOTECH.COM

KD-Validated Anti-Dihydropyrimidinase Like 2 Recombinant Rabbit Monoclonal Antibody

PAGE 2

Note: This product is for research use only.

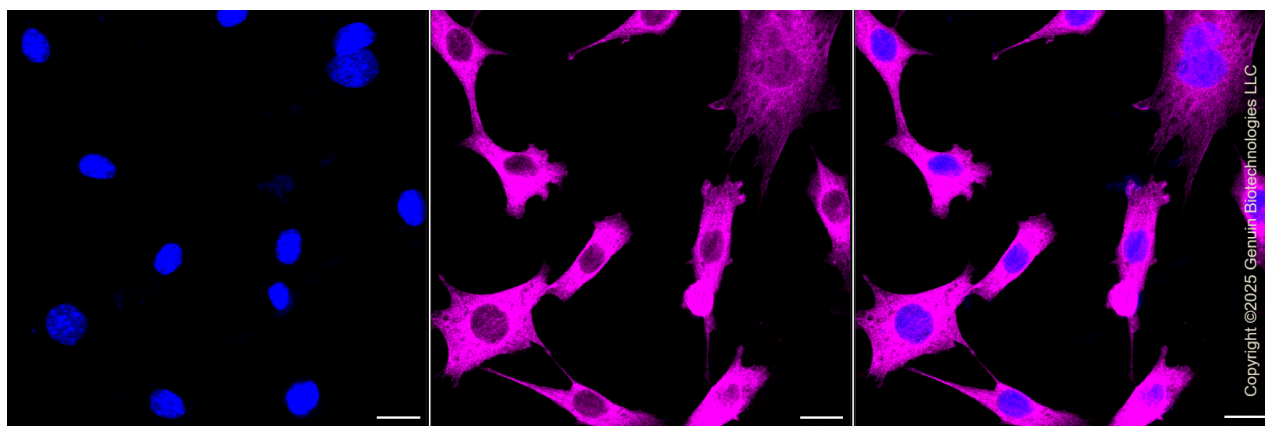
Validation Data



Copyright ©2025 Genuin Biotechnologies LLC

Dihydropyrimidinase like 2-Alexa Fluor® 647

Flow cytometric analysis of Dihydropyrimidinase like 2 expression in C2C12 cells using anti-Dihydropyrimidinase like 2 antibody (Cat#61600, 1:2,000). Green, isotype control; red, Dihydropyrimidinase like 2.



Copyright ©2025 Genuin Biotechnologies LLC

Immunocytochemical staining of C2C12 cells with anti-Dihydropyrimidinase like 2 antibody (Cat#61600, 1:1,000). Nuclei were stained blue with DAPI; Dihydropyrimidinase like 2 was

SUPPORT

SUPPORT@GENUINBIOTECH.COM
TEL: +1-540-855-7041

ORDERS

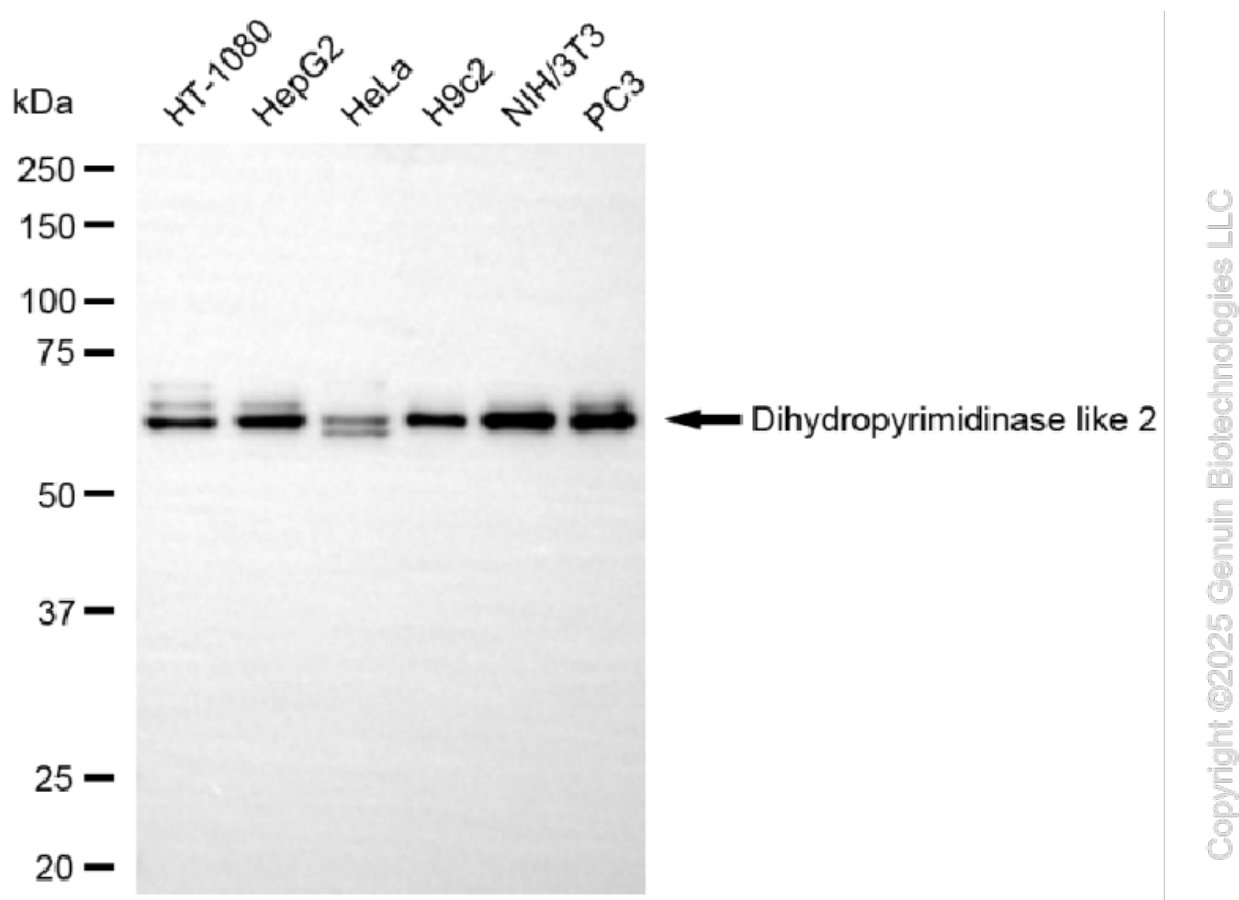
SALES@GENUINBIOTECH.COM
FAX: +1-540-855-7041

WWW.GENUINBIOTECH.COM

KD-Validated Anti-Dihydropyrimidinase Like 2 Recombinant Rabbit Monoclonal Antibody

PAGE 3

stained magenta with Alexa Fluor® 647. Images were taken using Leica stellaris 5. Protein abundance based on laser Intensity and smart gain: Medium. Scale bar, 20 µm.



Western blotting analysis using anti-dihydropyrimidinase like 2 antibody (Cat#61600). Total cell lysates (30 µg) from various cell lines were loaded and separated by SDS-PAGE. The blot was incubated with anti-dihydropyrimidinase like 2 antibody (Cat#61600, 1:5,000) and HRP-conjugated goat anti-rabbit secondary antibody (Cat#201, 1:20,000) respectively. Image was developed using FeQ™ ECL Substrate Kit (Cat#226).

SUPPORT

SUPPORT@GENUINBIOTECH.COM
TEL: +1-540-855-7041

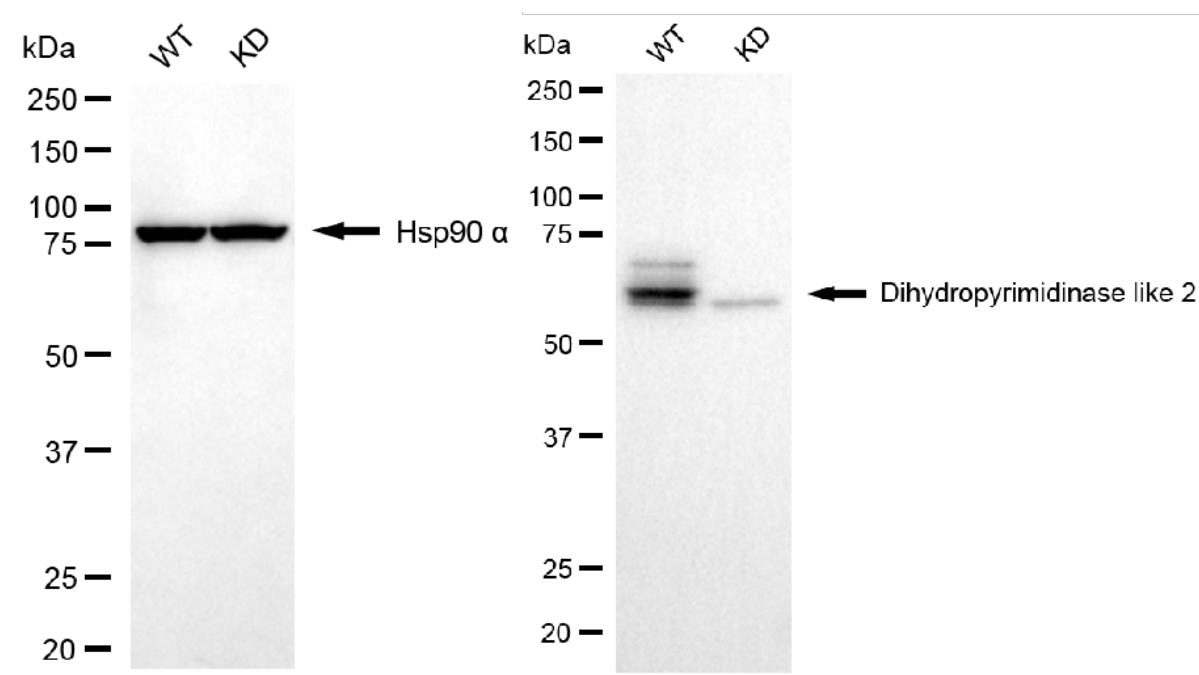
ORDERS

SALES@GENUINBIOTECH.COM
FAX: +1-540-855-7041

WWW.GENUINBIOTECH.COM

KD-Validated Anti-Dihydropyrimidinase Like 2 Recombinant Rabbit Monoclonal Antibody

PAGE 4



Copyright ©2025 Genuin Biotechnologies LLC

Western blotting analysis using anti-dihydropyrimidinase like 2 antibody (Cat#61600). Dihydropyrimidinase like 2 expression in wild type (WT) and dihydropyrimidinase like 2 (DPYSL2) knockdown (KD) HSHC cells with 20 µg of total cell lysates. Hsp90 α serves as a loading control. The blot was incubated with anti-dihydropyrimidinase like 2 antibody (Cat#61600, 1:5,000) and HRP-conjugated goat anti-rabbit secondary antibody (Cat#201, 1:20,000) respectively. Image was developed using NaQ™ ECL Substrate Kit (Cat#716).

SUPPORT

SUPPORT@GENUINBIOTECH.COM
TEL: +1-540-855-7041

ORDERS

SALES@GENUINBIOTECH.COM
FAX: +1-540-855-7041

WWW.GENUINBIOTECH.COM