

# KD-Validated Anti-DDAH1 Recombinant Rabbit Monoclonal Antibody



**Catalog #: 61603**

## Aliases

DDAH1; Dimethylarginine Dimethylaminohydrolase 1; DDAH; N(G),N(G)-Dimethylarginine Dimethylaminohydrolase 1; Dimethylargininase-1; EC 3.5.3.18; DDAH-1; DDAHI; NG, NG-Dimethylarginine Dimethylaminohydrolase; Epididymis Secretory Protein Li 16; HEL-S-16

## Background

Gene Name: DDAH1

NCBI Gene Entry: [23576](#)

UniProt Entry: [O94760](#)

## Application Information

Molecular Weight: Predicted, 31 kDa, observed, 36 kDa

Clonality: Rabbit monoclonal antibody

Clone ID: 25GB2995

Species Reactivity: Human

Applications Tested: Western blotting (WB), flow cytometry (FCM), immunocytochemistry (IC)

## Immunogen

A synthesized peptide derived from human DDAH1

## Isotype

Rabbit IgG

## Storage Buffer

Supplied in PBS (pH 7.4) containing 50% glycerol, and 0.02% sodium azide.

## Storage

Store at -20 °C for one year.

## Recommended Dilutions

Western blotting (WB): 1:1,000-1:5,000

Flow Cytometry (FCM): 1:2,000

Immunocytochemistry (IC): 1:100-1:1,000

**Note:** This product is for research use only.

---

### SUPPORT

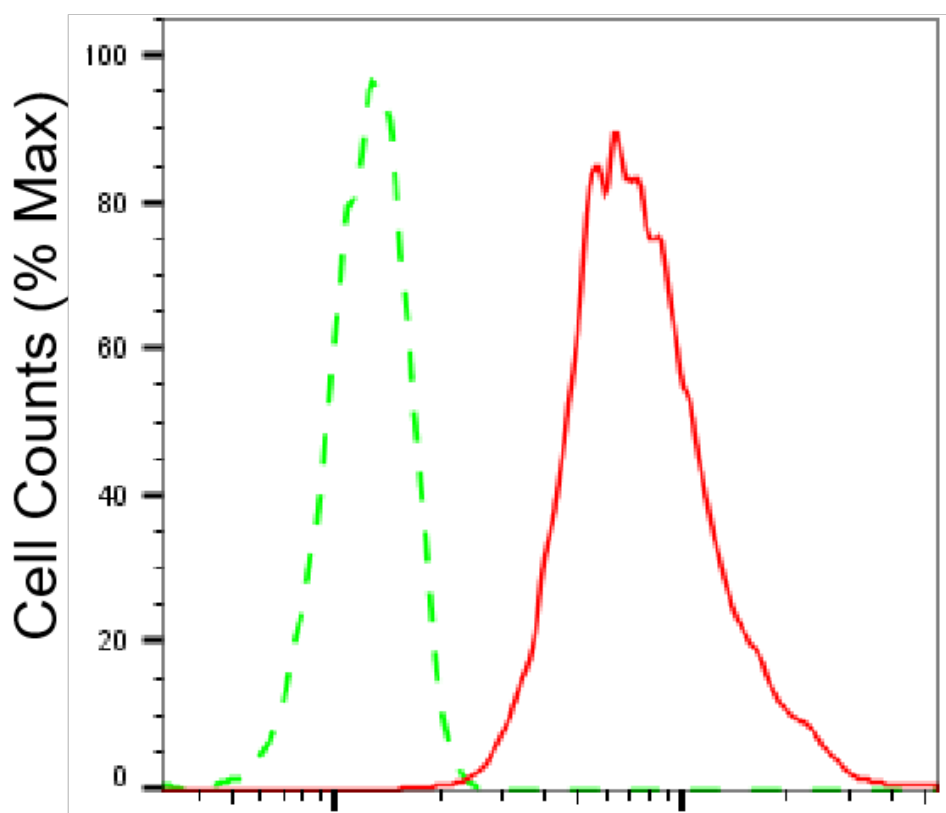
SUPPORT@GENUINBIOTECH.COM  
TEL: +1-540-855-7041

### ORDERS

SALES@GENUINBIOTECH.COM  
FAX: +1-540-855-7041

[WWW.GENUINBIOTECH.COM](http://WWW.GENUINBIOTECH.COM)

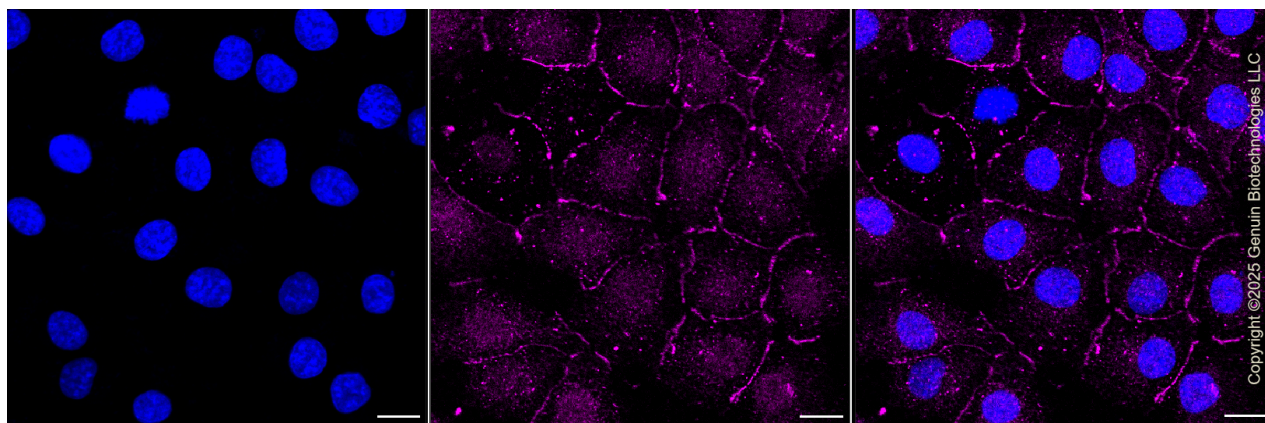
**Validation Data**



Copyright ©2025 Genuin Biotechnologies LLC

**Dimethylarginine dimethylaminohydrolase 1-  
Alexa Fluor® 647**

Flow cytometric analysis of Dimethylarginine dimethylaminohydrolase 1 expression in HT-1080 cells using anti-Dimethylarginine dimethylaminohydrolase 1 antibody (Cat#61603, 1:2,000). Green, isotype control; red, Dimethylarginine dimethylaminohydrolase 1.



Copyright ©2025 Genuin Biotechnologies LLC

Immunocytochemical staining of HT-1080 cells with anti-Dimethylarginine

**SUPPORT**

SUPPORT@GENUINBIOTECH.COM  
TEL: +1-540-855-7041

**ORDERS**

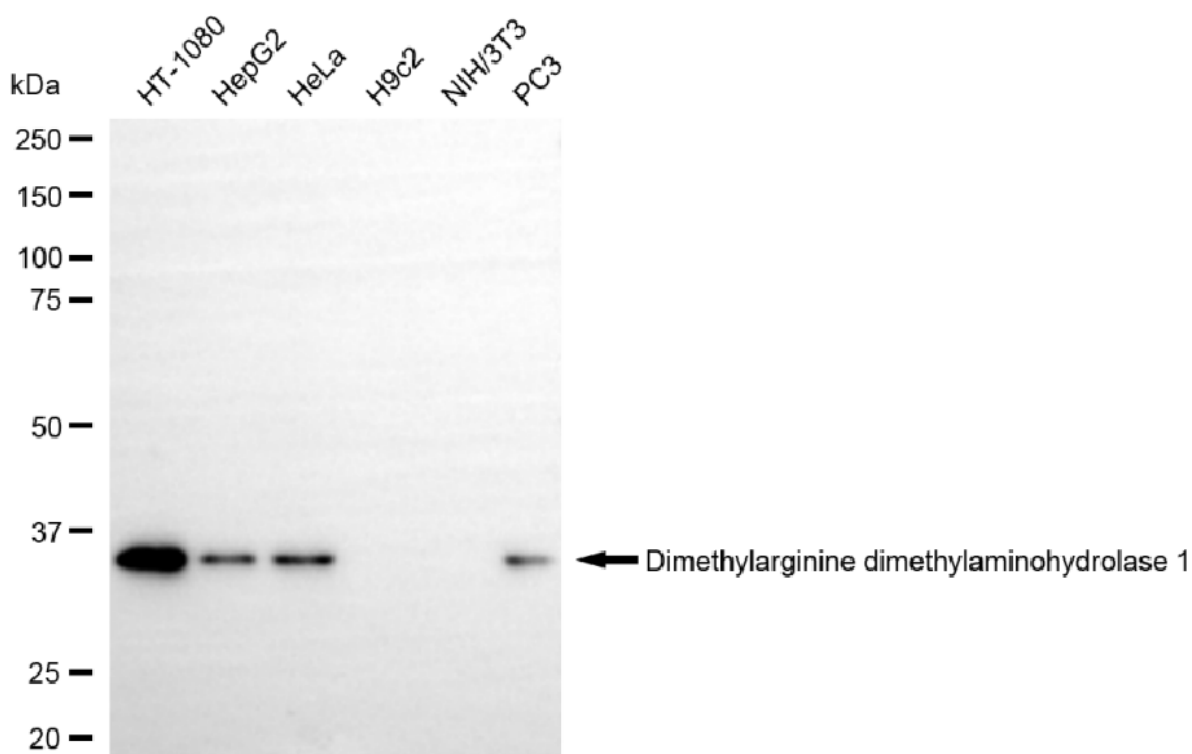
SALES@GENUINBIOTECH.COM  
FAX: +1-540-855-7041

**WWW.GENUINBIOTECH.COM**

## KD-Validated Anti-DDAH1 Recombinant Rabbit Monoclonal Antibody

PAGE 3

dimethylaminohydrolase 1 antibody (Cat#61603, 1:1,000). Nuclei were stained blue with DAPI; Dimethylarginine dimethylaminohydrolase 1 was stained magenta with Alexa Fluor® 647. Images were taken using Leica stellaris 5. Protein abundance based on laser Intensity and smart gain: Medium. Scale bar, 20  $\mu$ m.



Western blotting analysis using anti-dimethylarginine dimethylaminohydrolase 1 antibody (Cat#61603). Total cell lysates (30  $\mu$ g) from various cell lines were loaded and separated by SDS-PAGE. The blot was incubated with anti-dimethylarginine dimethylaminohydrolase 1 antibody (Cat#61603, 1:5,000) and HRP-conjugated goat anti-rabbit secondary antibody (Cat#201, 1:20,000) respectively. Image was developed using NaQ™ ECL Substrate Kit (Cat#716).

### SUPPORT

SUPPORT@GENUINBIOTECH.COM  
TEL: +1-540-855-7041

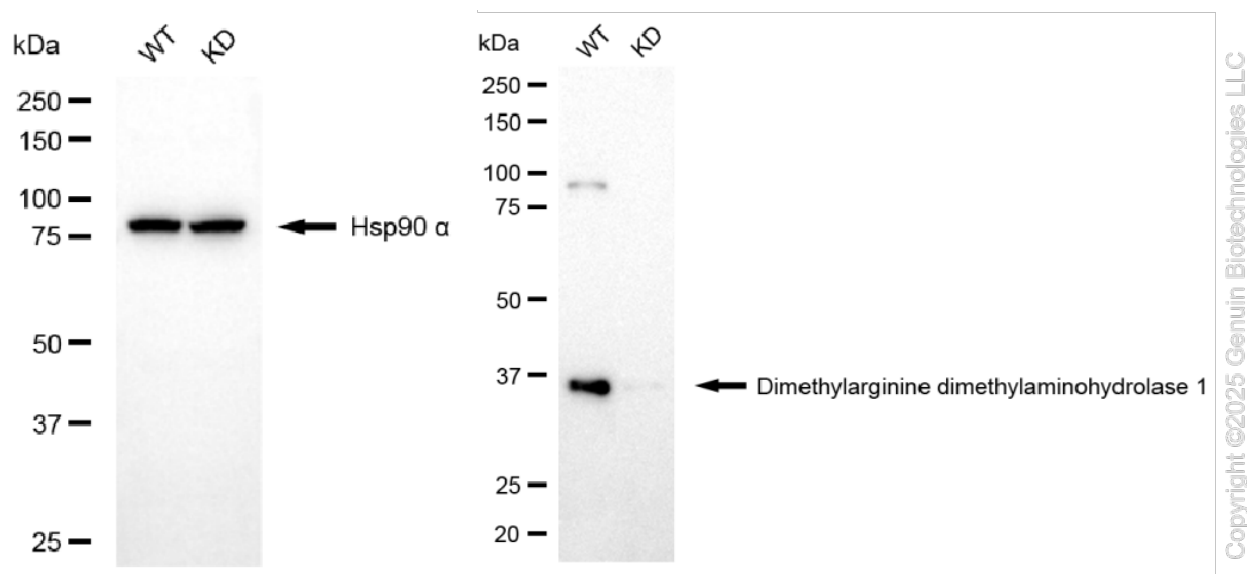
### ORDERS

SALES@GENUINBIOTECH.COM  
FAX: +1-540-855-7041

WWW.GENUINBIOTECH.COM

## KD-Validated Anti-DDAH1 Recombinant Rabbit Monoclonal Antibody

PAGE 4



Western blotting analysis using anti-dimethylarginine dimethylaminohydrolase 1 antibody (Cat#61603). Dimethylarginine dimethylaminohydrolase 1 expression in wild type (WT) and dimethylarginine dimethylaminohydrolase 1 (DDAH1) knockdown (KD) HSHC cells with 20  $\mu$ g of total cell lysates. Hsp90  $\alpha$  serves as a loading control. The blot was incubated with anti-dimethylarginine dimethylaminohydrolase 1 antibody (Cat#61603, 1:5,000) and HRP-conjugated goat anti-rabbit secondary antibody (Cat#201, 1:20,000) respectively. Image was developed using NaQ™ ECL Substrate Kit (Cat#716).

### SUPPORT

SUPPORT@GENUINBIOTECH.COM  
TEL: +1-540-855-7041

### ORDERS

SALES@GENUINBIOTECH.COM  
FAX: +1-540-855-7041

[WWW.GENUINBIOTECH.COM](http://WWW.GENUINBIOTECH.COM)