

KD-Validated Anti-Phospho-CDC37 (S13) Recombinant Rabbit Monoclonal Antibody



Catalog #: 61606

Aliases

CDC37; Cell Division Cycle 37, HSP90 Cochaperone; Hsp90 Co-Chaperone Cdc37; P50CDC37; CDC37 (Cell Division Cycle 37, S. Cerevisiae, Homolog); Hsp90 Chaperone Protein Kinase-Targeting Subunit; CDC37 Cell Division Cycle 37 Homolog; CDC37 Cell Division Cycle 37 Homolog (S. Cerevisiae); Cell Division Cycle 37 Homolog (S. Cerevisiae); Cell Division Cycle 37 Homolog; P50Cdc37; CDC37A

Background

Gene Name: CDC37

NCBI Gene Entry: [11140](#)

UniProt Entry: [Q16543](#)

Application Information

Molecular Weight: Predicted, 44 kDa, observed, 44 kDa

Clonality: Rabbit monoclonal antibody

Clone ID: 23GB3595

Species Reactivity: Human, mouse, rat

Applications Tested: Western blotting (WB), flow cytometry (FCM), immunocytochemistry (IC)

Immunogen

A synthesized peptide derived from human Phospho-CDC37 (S13)

Isotype

Rabbit IgG

Storage Buffer

Supplied in PBS (pH 7.4) containing 50% glycerol, and 0.02% sodium azide.

Storage

Store at -20 °C for one year.

Recommended Dilutions

Western Blotting (WB): 1:1,000-1:5,000

Flow Cytometry (FCM): 1:2,000

Immunocytochemistry (IC): 1:100-1:1,000

SUPPORT

SUPPORT@GENUINBIOTECH.COM
TEL: +1-540-855-7041

ORDERS

SALES@GENUINBIOTECH.COM
FAX: +1-540-855-7041

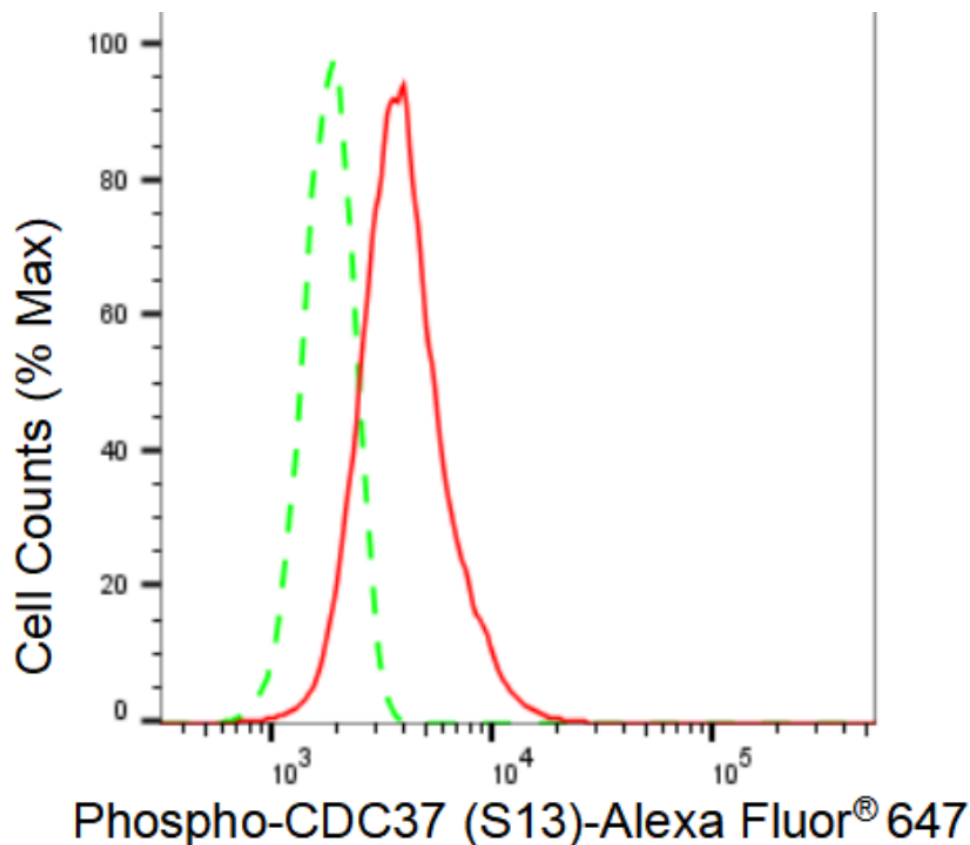
WWW.GENUINBIOTECH.COM

KD-Validated Anti-Phospho-CDC37 (S13) Recombinant Rabbit Monoclonal Antibody

PAGE 2

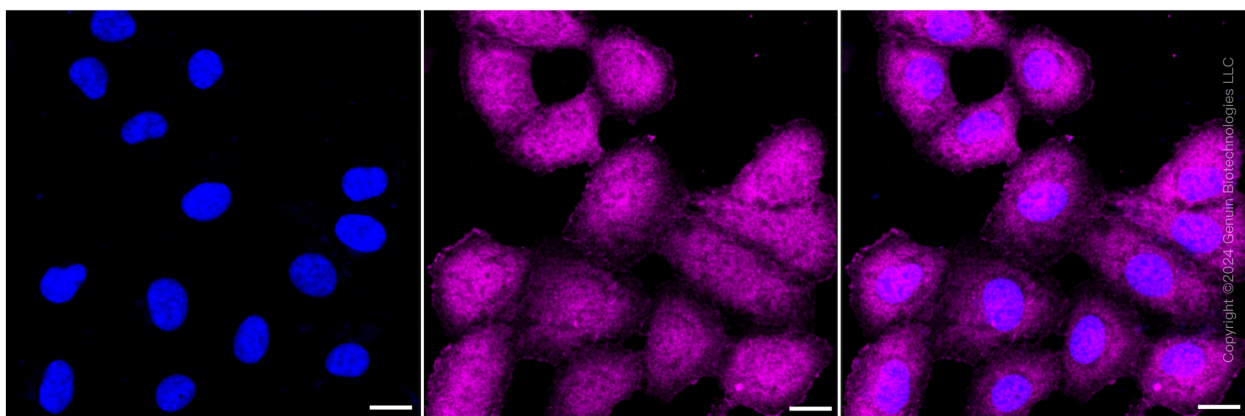
Note: This product is for research use only.

Validation Data



Copyright ©2024 Genuin Biotechnologies LLC

Flow cytometric analysis of Phospho-CDC37 (S13) expression in HT-1080 cells using Phospho-CDC37 (S13) antibody (Cat#61606, 1:2,000). Green, isotype control; red, Phospho-CDC37 (S13).



Immunocytochemical staining of HT-1080 cells with Phospho-CDC37 (S13) antibody (Cat#61606, 1:1,000). Nuclei were stained blue with DAPI; Phospho-CDC37 (S13) was stained magenta with Alexa Fluor® 647. Images were taken using Leica stellaris 5. Protein abundance based on laser Intensity and smart gain: Medium. Scale bar: 20 µm.

SUPPORT

SUPPORT@GENUINBIOTECH.COM
TEL: +1-540-855-7041

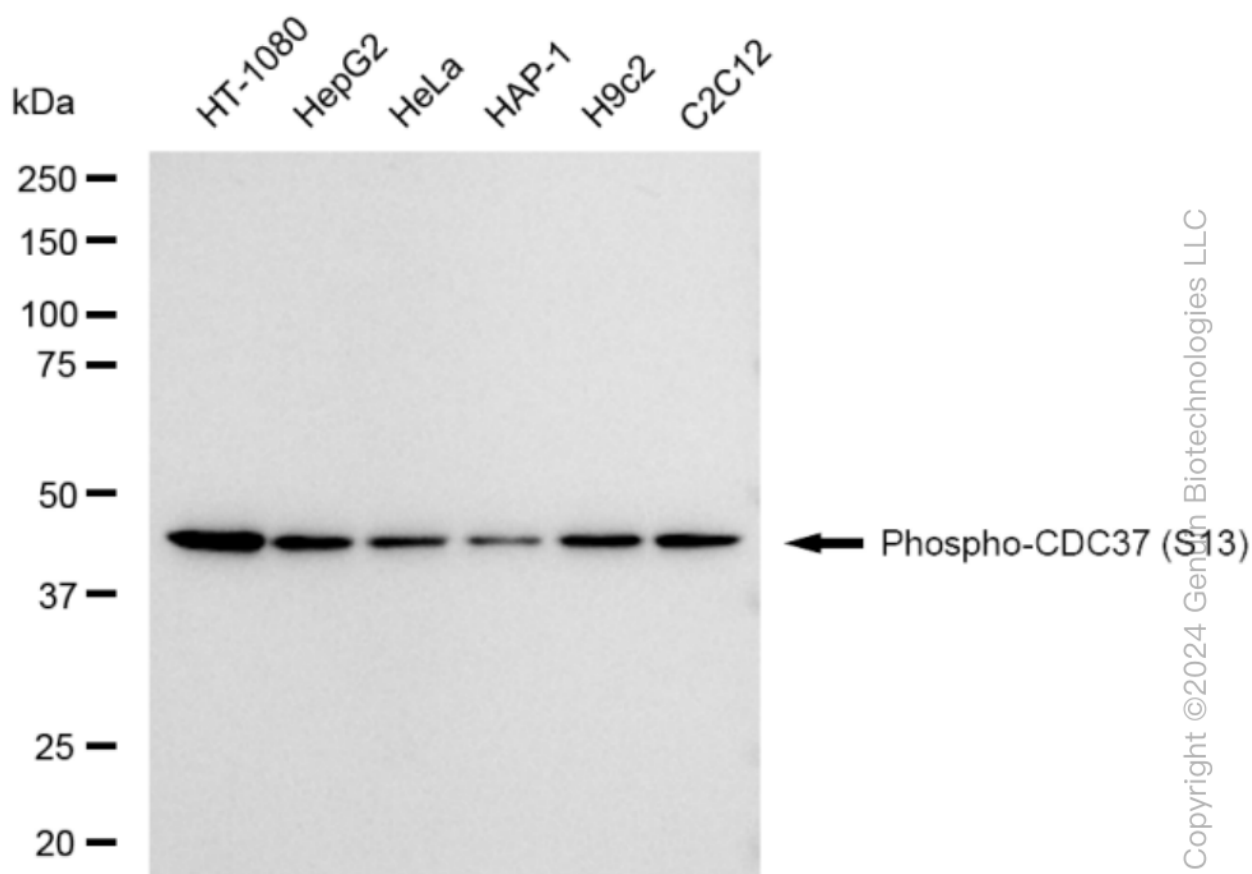
ORDERS

SALES@GENUINBIOTECH.COM
FAX: +1-540-855-7041

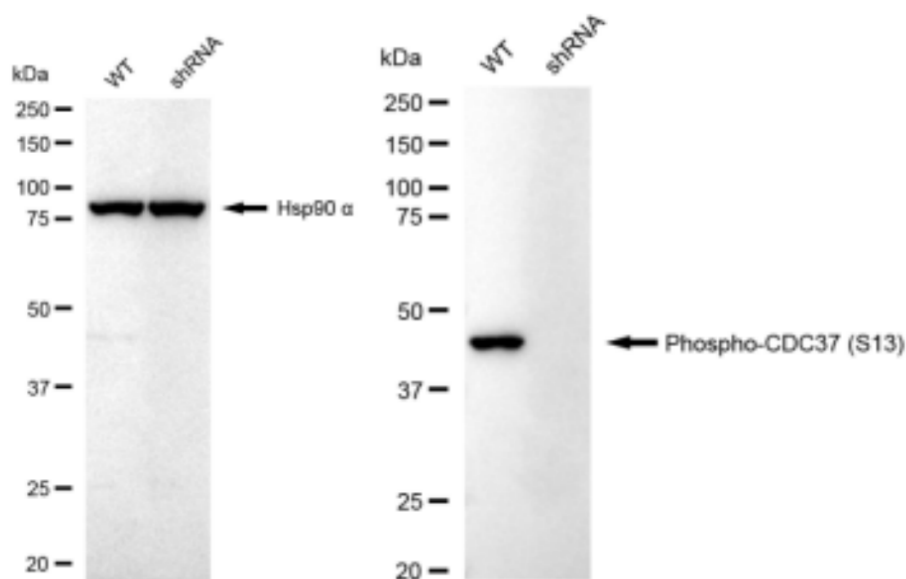
WWW.GENUINBIOTECH.COM

KD-Validated Anti-Phospho-CDC37 (S13) Recombinant Rabbit Monoclonal Antibody

PAGE 3



Western blotting analysis using anti-Phospho-CDC37 (S13) antibody (Cat#61606). Total cell lysates (30 μ g) from various cell lines were loaded and separated by SDS-PAGE. The blot was incubated with anti-Phospho-CDC37 (S13) antibody (Cat#61606, 1:5,000) and HRP-conjugated goat anti-rabbit secondary antibody (Cat#201, 1:20,000) respectively. Image was developed using FeQ™ ECL Substrate Kit (Cat#226).



SUPPORT

SUPPORT@GENUINBIOTECH.COM
TEL: +1-540-855-7041

ORDERS

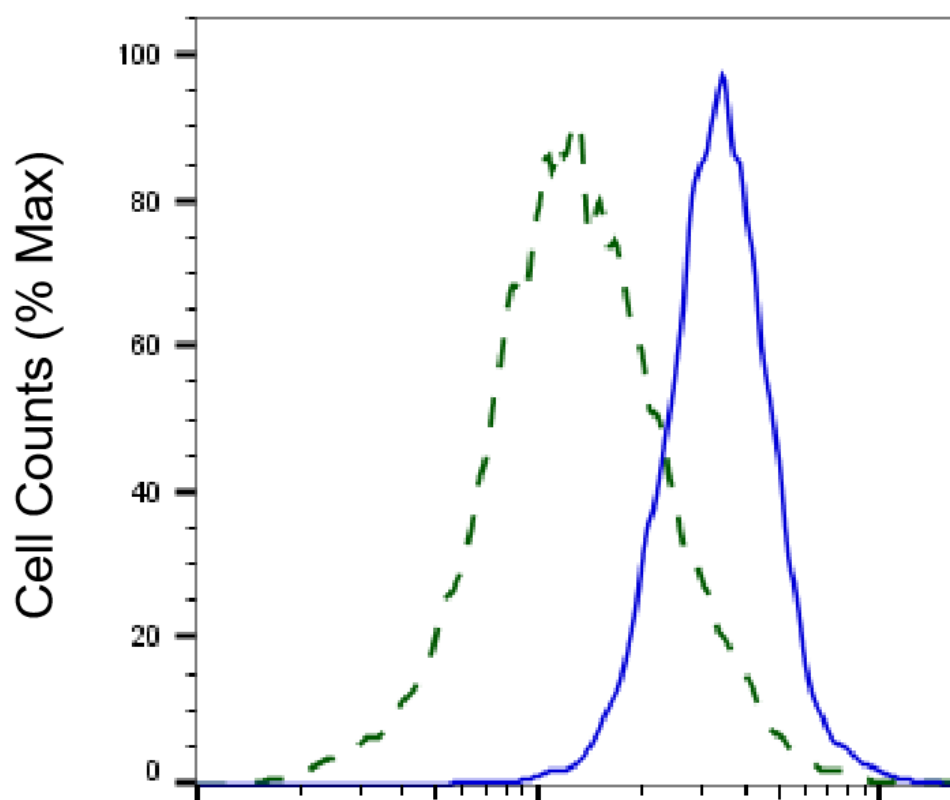
SALES@GENUINBIOTECH.COM
FAX: +1-540-855-7041

WWW.GENUINBIOTECH.COM

KD-Validated Anti-Phospho-CDC37 (S13) Recombinant Rabbit Monoclonal Antibody

PAGE 4

Western blotting analysis using anti-Phospho-CDC37 (S13) antibody (Cat#61606). Phospho-CDC37 (S13) expression in wild type (WT) and Phospho-CDC37 (S13) shRNA knockdown (KD) HeLa cells with 30 µg of total cell lysates. Hsp90 α serves as a loading control. The blot was incubated with anti-Phospho-CDC37 (S13) antibody (Cat#61606, 1:5,000) and HRP-conjugated goat anti-rabbit secondary antibody (Cat#201, 1:20,000) respectively. Image was developed using FeQ™ ECL Substrate Kit (Cat#226).



Phospho-CDC37 (S13)-Alexa Fluor® 647

Validation of CDC37 knockdown using flow cytometry. Wild-type(WT, Blue) and knockdown(KD, Green) HeLa cells were stained with anti-Phospho-CDC37 (S13) antibody (Cat#61606, 1:2,000) and analyzed using BD flow cytometer.

Copyright ©2025 Genuin Biotechnologies LLC

SUPPORT

SUPPORT@GENUINBIOTECH.COM
TEL: +1-540-855-7041

ORDERS

SALES@GENUINBIOTECH.COM
FAX: +1-540-855-7041

WWW.GENUINBIOTECH.COM