

KD-Validated Anti-AP1G1 Recombinant Rabbit Monoclonal Antibody



Catalog #: 61609

Aliases

AP1G1; Adaptor Related Protein Complex 1 Subunit Gamma 1; Gamma1-Adaptin; CLAPG1; ADTG; Clathrin Assembly Protein Complex 1 Gamma-1 Large Chain; Adaptor Related Protein Complex 1 Gamma 1 Subunit; Golgi Adaptor HA1/AP1 Adaptin Subunit Gamma-1; Adaptor Protein Complex AP-1 Subunit Gamma-1; AP-1 Complex Subunit Gamma-1; Clathrin-Associated/Assembly/Adaptor Protein, Large, Gamma 1; Clathrin Assembly Protein Complex 1 Gamma Large Chain; Adaptor-Related Protein Complex 1, Gamma 1 Subunit; Adapter-Related Protein Complex 1 Subunit Gamma-1; Adaptor-Related Protein Complex 1 Subunit Gamma-1; Golgi Adaptor HA1/AP1 Adaptin Gamma Subunit; Testicular Tissue Protein Li 21; Gamma Adaptin; USRISD

Background

Gene Name: AP1G1

NCBI Gene Entry: [164](#)

UniProt Entry: [O43747](#)

Application Information

Molecular Weight: Predicted, 91 kDa, observed, 98 kDa

Clonality: Rabbit monoclonal antibody

Clone ID: 23GB3655

Species Reactivity: Human, mouse, rat

Applications Tested: Western blotting (WB), flow cytometry (FCM), immunocytochemistry (IC)

Immunogen

A synthesized peptide derived from human AP1G1

Isotype

Rabbit IgG

Storage Buffer

Supplied in PBS (pH 7.4) containing 50% glycerol, and 0.02% sodium azide.

Storage

Store at -20 °C for one year.

Recommended Dilutions

SUPPORT

SUPPORT@GENUINBIOTECH.COM
TEL: +1-540-855-7041

ORDERS

SALES@GENUINBIOTECH.COM
FAX: +1-540-855-7041

WWW.GENUINBIOTECH.COM

KD-Validated Anti-AP1G1 Recombinant Rabbit Monoclonal Antibody

PAGE 2

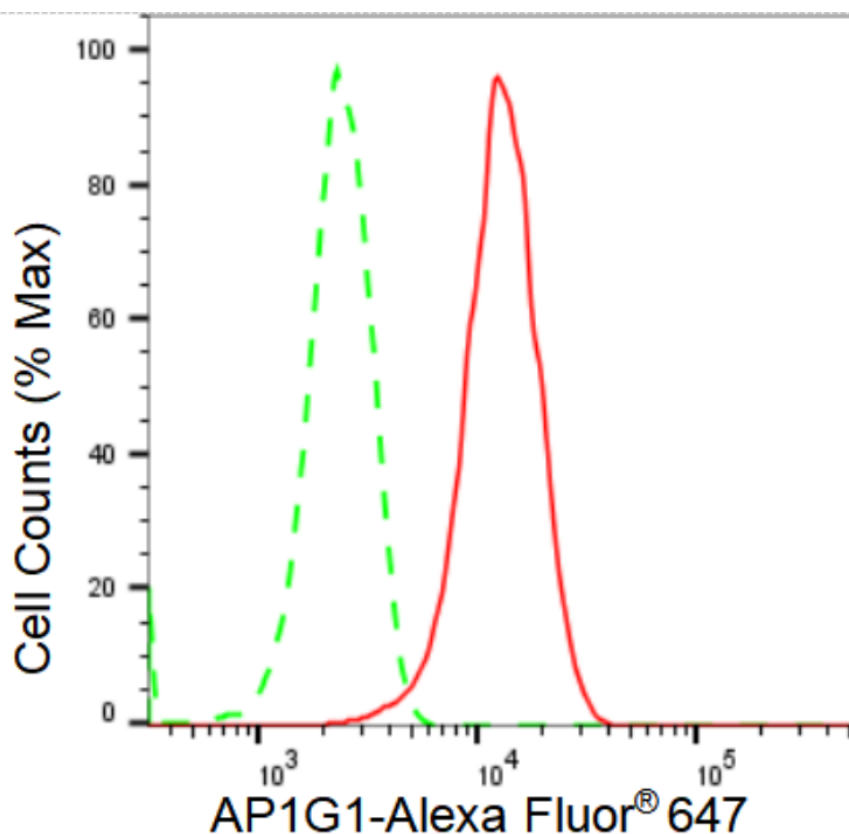
Western Blotting (WB): 1:1,000-1:5,000

Flow Cytometry (FCM): 1:2,000

Immunocytochemistry (IC): 1:100-1:1,000

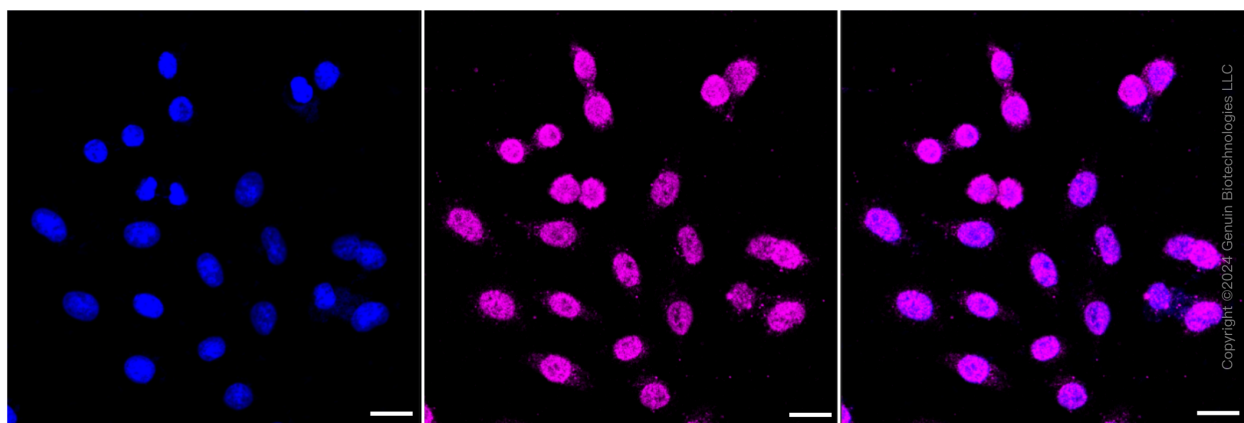
Note: This product is for research use only.

Validation Data



Copyright ©2024 Genuin Biotechnologies LLC

Flow cytometric analysis of AP1G1 expression in HepG2 cells using AP1G1 antibody (Cat#61609, 1:2,000). Green, isotype control; red, AP1G1.



Copyright ©2024 Genuin Biotechnologies LLC

SUPPORT

SUPPORT@GENUINBIOTECH.COM
TEL: +1-540-855-7041

ORDERS

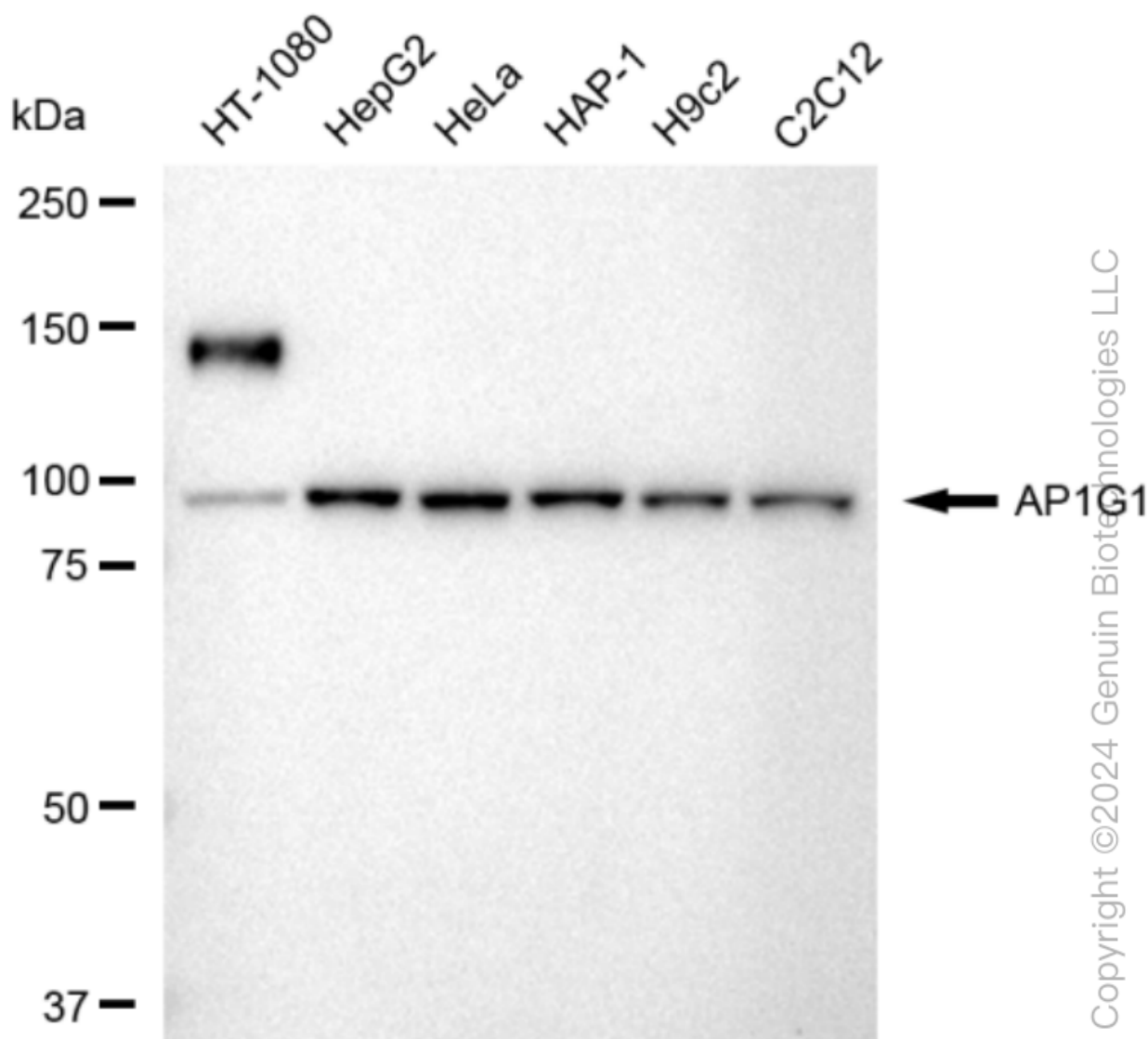
SALES@GENUINBIOTECH.COM
FAX: +1-540-855-7041

WWW.GENUINBIOTECH.COM

KD-Validated Anti-AP1G1 Recombinant Rabbit Monoclonal Antibody

PAGE 3

Immunocytochemical staining of HepG2 cells with AP1G1 antibody (Cat#61609, 1:1,000). Nuclei were stained blue with DAPI; AP1G1 was stained magenta with Alexa Fluor® 647. Images were taken using Leica stellaris 5. Protein abundance based on laser Intensity and smart gain: Medium. Scale bar: 20 μ m.



Western blotting analysis using anti-AP1G1 antibody (Cat#61609). Total cell lysates (30 μ g) from various cell lines were loaded and separated by SDS-PAGE. The blot was incubated with anti-AP1G1 antibody (Cat#61609, 1:5,000) and HRP-conjugated goat anti-rabbit secondary antibody (Cat#201, 1:20,000) respectively. Image was developed using FeQ™ ECL Substrate Kit (Cat#226).

SUPPORT

SUPPORT@GENUINBIOTECH.COM
TEL: +1-540-855-7041

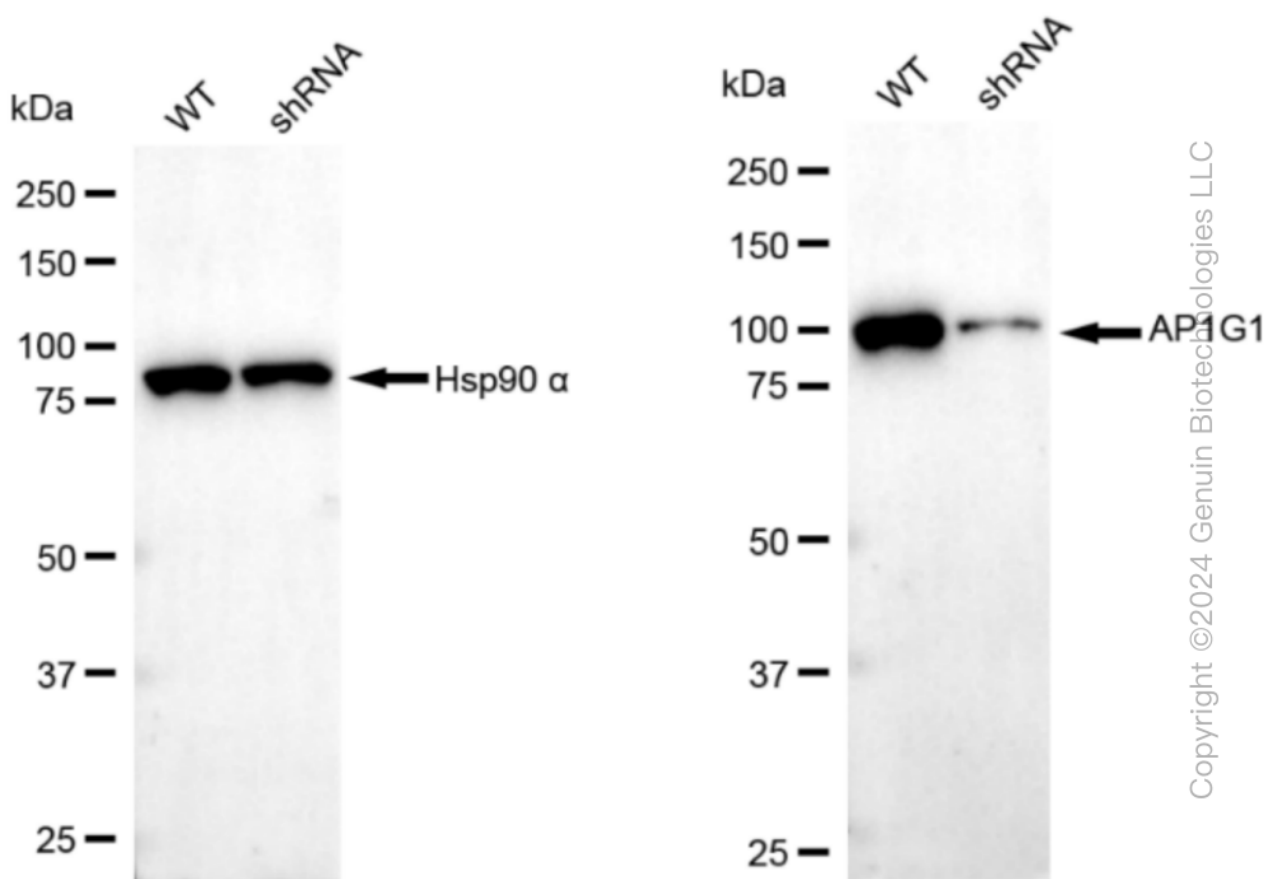
ORDERS

SALES@GENUINBIOTECH.COM
FAX: +1-540-855-7041

WWW.GENUINBIOTECH.COM

KD-Validated Anti-AP1G1 Recombinant Rabbit Monoclonal Antibody

PAGE 4



Western blotting analysis using anti-AP1G1 antibody (Cat#61609). AP1G1 expression in wild type (WT) and AP1G1 shRNA knockdown (KD) HeLa cells with 30 μ g of total cell lysates. β -Tubulin serves as a loading control. The blot was incubated with anti-AP1G1 antibody (Cat#61609, 1:5,000) and HRP-conjugated goat anti-rabbit secondary antibody (Cat#201, 1:20,000) respectively. Image was developed using FeQTM ECL Substrate Kit (Cat#226).

SUPPORT

SUPPORT@GENUINBIOTECH.COM
TEL: +1-540-855-7041

ORDERS

SALES@GENUINBIOTECH.COM
FAX: +1-540-855-7041

WWW.GENUINBIOTECH.COM