

KD-Validated Anti-Nth Like DNA Glycosylase 1 Recombinant Rabbit Monoclonal Antibody



Catalog #: 61611

Aliases

NTHL1; Nth Like DNA Glycosylase 1; OCTS3; NTH1; Bifunctional DNA N-Glycosylase/DNA-(Apurinic Or Apyrimidinic Site) Lyase; Endonuclease III-Like Protein 1; DNA Glycosylase/AP Lyase; HNTH1; Bifunctional DNA N-Glycosylase/DNA-(Apurinic Or Apyrimidinic Site) Lyase; Nth Endonuclease III-Like 1 (E. Coli); Nth (E.Coli Endonuclease III)-Like 1; Nth Endonuclease III-Like 1; DNA Glycosylase/AP Lyase; EC 4.2.99.18; EC 3.2.2.-; FAP3

Background

Gene Name: NTHL1

NCBI Gene Entry: [4913](#)

UniProt Entry: [P78549](#)

Application Information

Molecular Weight: Predicted, 34 kDa, observed, 34 kDa

Clonality: Rabbit monoclonal antibody

Clone ID: 25GB3020

Species Reactivity: Human

Applications Tested: Western blotting (WB), flow cytometry (FCM), immunocytochemistry (IC)

Immunogen

A synthesized peptide derived from human NTH1

Isotype

Rabbit IgG

Storage Buffer

Supplied in PBS (pH 7.4) containing 50% glycerol, and 0.02% sodium azide.

Storage

Store at -20 °C for one year.

Recommended Dilutions

Western blotting (WB): 1:1,000-1:5,000

Flow Cytometry (FCM): 1:2,000

Immunocytochemistry (IC): 1:100-1:1,000

SUPPORT

SUPPORT@GENUINBIOTECH.COM
TEL: +1-540-855-7041

ORDERS

SALES@GENUINBIOTECH.COM
FAX: +1-540-855-7041

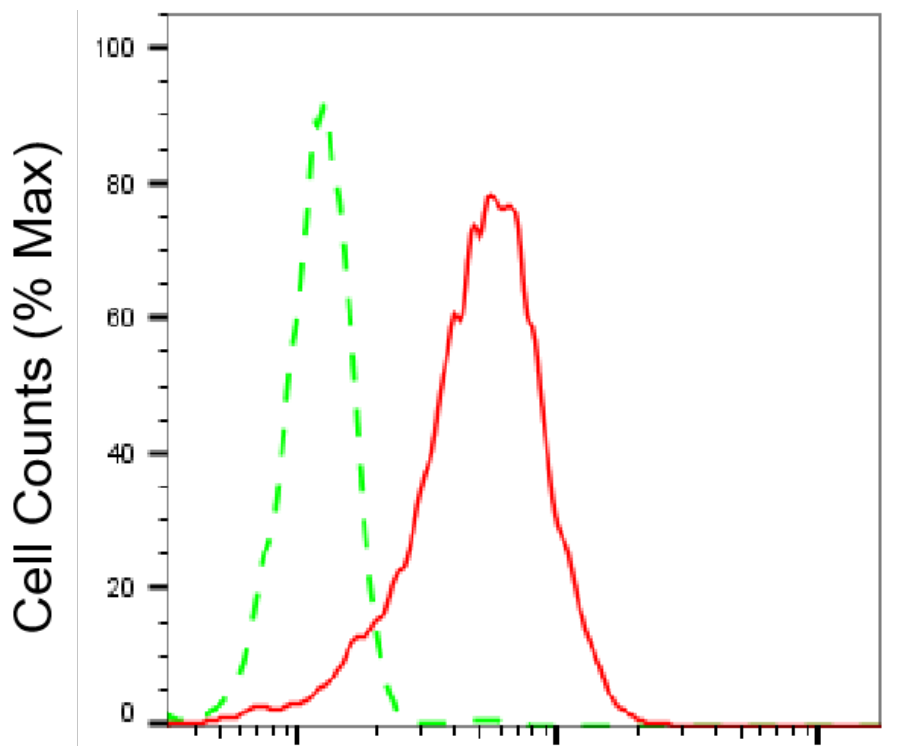
WWW.GENUINBIOTECH.COM

KD-Validated Anti-Nth Like DNA Glycosylase 1 Recombinant Rabbit Monoclonal Antibody

PAGE 2

Note: This product is for research use only.

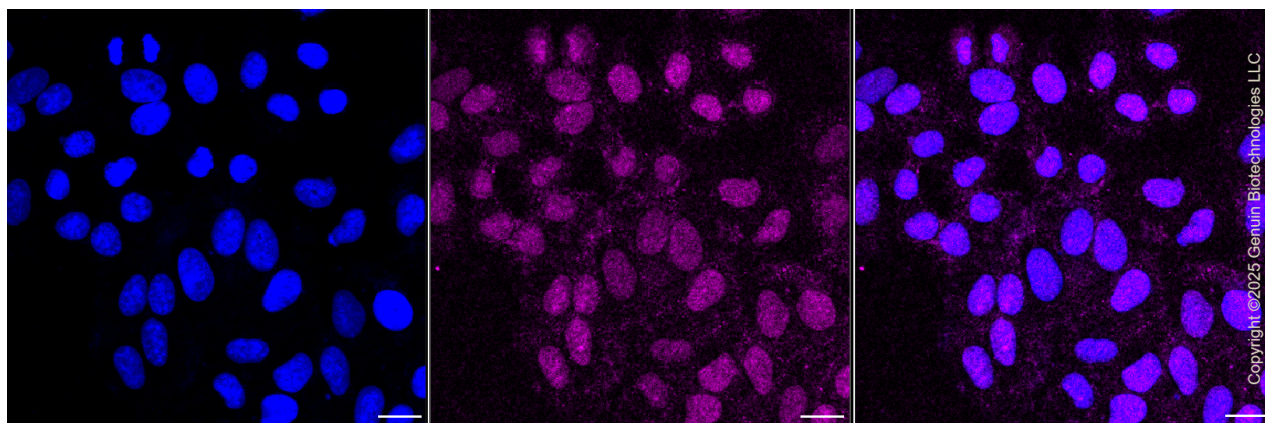
Validation Data



Copyright ©2025 Genuin Biotechnologies LLC

Nth like DNA glycosylase 1-Alexa Fluor® 647

Flow cytometric analysis of Nth like DNA glycosylase 1 expression in HepG2 cells using anti-Nth like DNA glycosylase 1c antibody (Cat#61611, 1:2,000). Green, isotype control; red, Nth like DNA glycosylase 1.



Copyright ©2025 Genuin Biotechnologies LLC

Immunocytochemical staining of Nth like DNA glycosylase 1 cells with Nth like DNA glycosylase 1 antibody (Cat#61611, 1:1,000). Nuclei were stained blue with DAPI; Nth like DNA glycosylase 1 was stained magenta with Alexa Fluor® 647. Images were taken using Leica

SUPPORT

SUPPORT@GENUINBIOTECH.COM
TEL: +1-540-855-7041

ORDERS

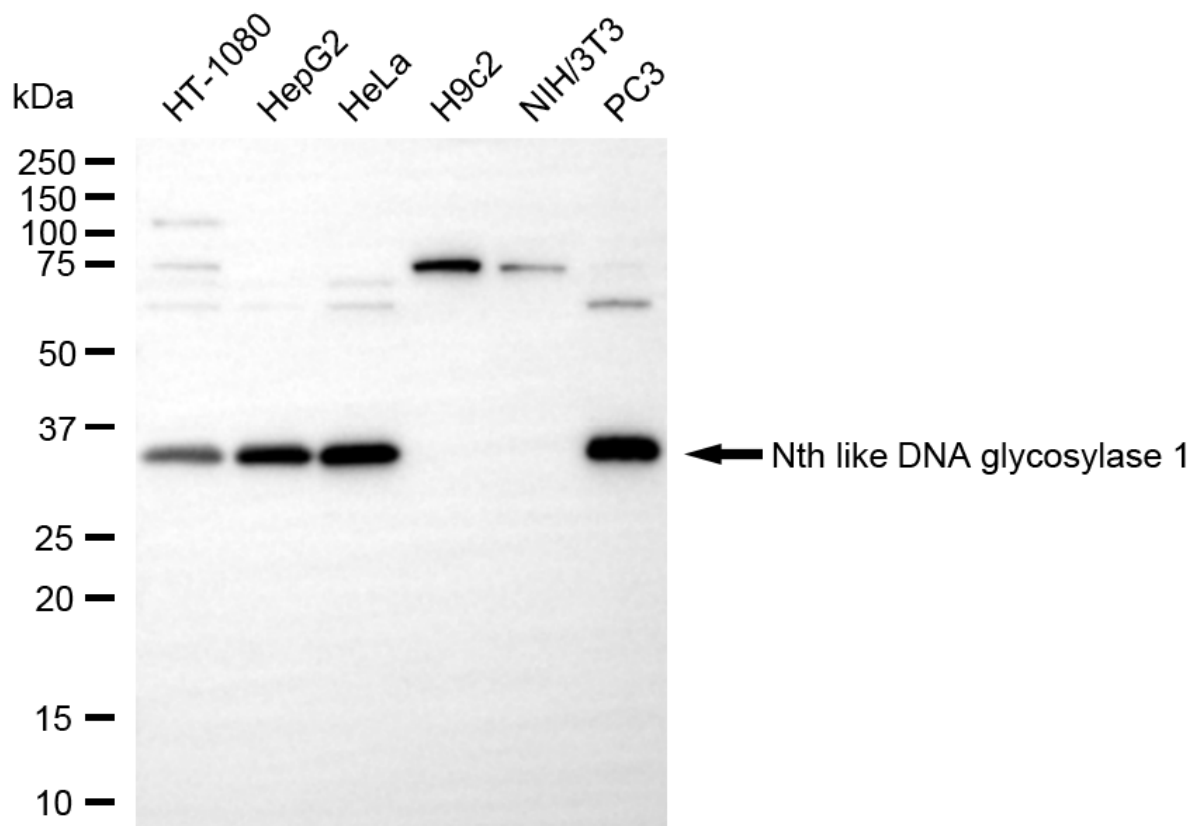
SALES@GENUINBIOTECH.COM
FAX: +1-540-855-7041

WWW.GENUINBIOTECH.COM

KD-Validated Anti-Nth Like DNA Glycosylase 1 Recombinant Rabbit Monoclonal Antibody

PAGE 3

stellaris 5. Protein abundance based on laser Intensity and smart gain: Medium. Scale bar, 20 μ m.



Western blotting analysis using anti-nth like DNA glycosylase 1 antibody (Cat#61611). Total cell lysates (30 μ g) from various cell lines were loaded and separated by SDS-PAGE. The blot was incubated with anti-nth like DNA glycosylase 1 antibody (Cat#61611, 1:5,000) and HRP-conjugated goat anti-rabbit secondary antibody (Cat#201, 1:20,000) respectively. Image was developed using NaQ™ ECL Substrate Kit (Cat#716).

SUPPORT

SUPPORT@GENUINBIOTECH.COM
TEL: +1-540-855-7041

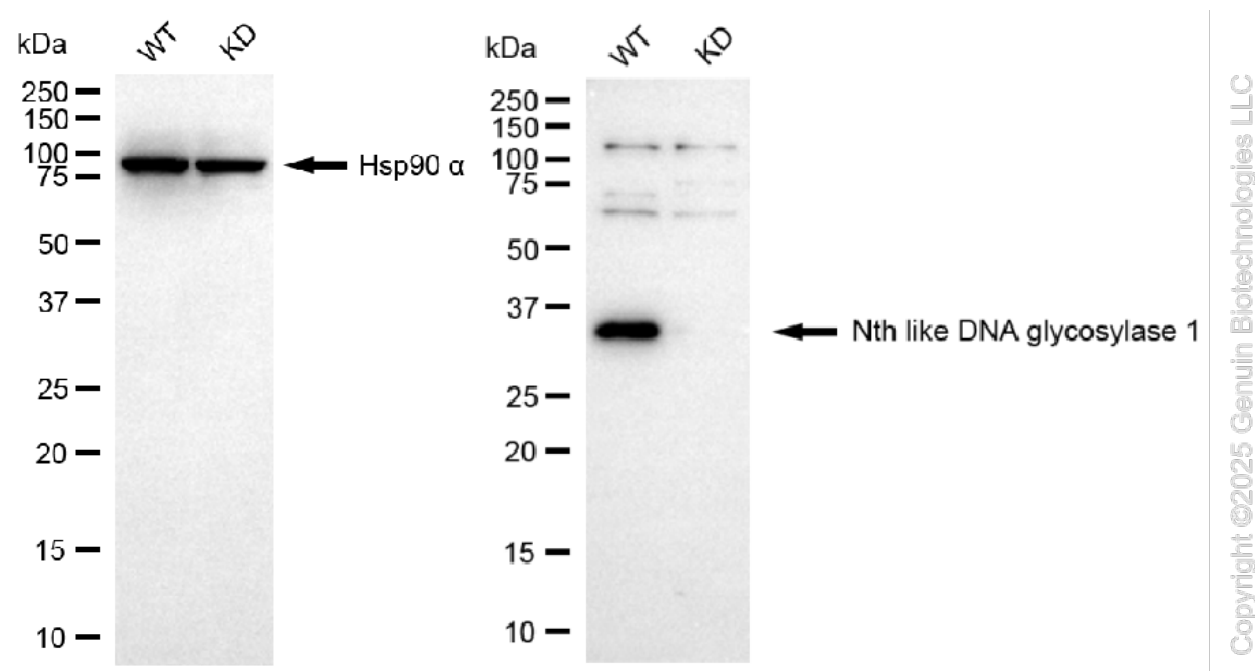
ORDERS

SALES@GENUINBIOTECH.COM
FAX: +1-540-855-7041

WWW.GENUINBIOTECH.COM

KD-Validated Anti-Nth Like DNA Glycosylase 1 Recombinant Rabbit Monoclonal Antibody

PAGE 4



Western blotting analysis using anti-nth like DNA glycosylase 1 antibody (Cat#61611). Nth like DNA glycosylase 1 expression in wild-type (WT) and nth like DNA glycosylase 1 (NTHL1) knockdown (KD) HT-1080 cells with 20 µg of total cell lysates. Hsp90 α serves as a loading control. The blot was incubated with anti-nth like DNA glycosylase 1 antibody (Cat#61611, 1:5,000) and HRP-conjugated goat anti-rabbit secondary antibody (Cat#201, 1:20,000) respectively. Image was developed using NaQ™ ECL Substrate Kit (Cat#716).

SUPPORT

SUPPORT@GENUINBIOTECH.COM
TEL: +1-540-855-7041

ORDERS

SALES@GENUINBIOTECH.COM
FAX: +1-540-855-7041

WWW.GENUINBIOTECH.COM