

# KD-Validated Anti-CGRP Receptor Component Recombinant Rabbit Monoclonal Antibody



**Catalog #: 61612**

## Aliases

CRCP; CGRP Receptor Component; CGRP-RCP; Calcitonin Gene-Related Peptide-Receptor Component Protein; POLR3I; RCP9; RCP; C17; DNA-Directed RNA Polymerase III Subunit RPC9; CGRP-Receptor Component Protein; RNA Polymerase III Subunit C9; CGRPRCP; POLR3J; HsC17; RPC9

## Background

Gene Name: CRCP

NCBI Gene Entry: [27297](#)

UniProt Entry: [O75575](#)

## Application Information

Molecular Weight: Predicted, 17 kDa, observed, 22 kDa

Clonality: Rabbit monoclonal antibody

Clone ID: 25GB3025

Species Reactivity: Human, mouse

Applications Tested: Western blotting (WB), flow cytometry (FCM), immunocytochemistry (IC)

## Immunogen

A synthesized peptide derived from human CRCP

## Isotype

Rabbit IgG

## Storage Buffer

Supplied in PBS (pH 7.4) containing 50% glycerol, and 0.02% sodium azide.

## Storage

Store at -20 °C for one year.

## Recommended Dilutions

Western blotting (WB): 1:1,000-1:5,000

Flow Cytometry (FCM): 1:2,000

Immunocytochemistry (IC): 1:100-1:1,000

---

### SUPPORT

SUPPORT@GENUINBIOTECH.COM  
TEL: +1-540-855-7041

### ORDERS

SALES@GENUINBIOTECH.COM  
FAX: +1-540-855-7041

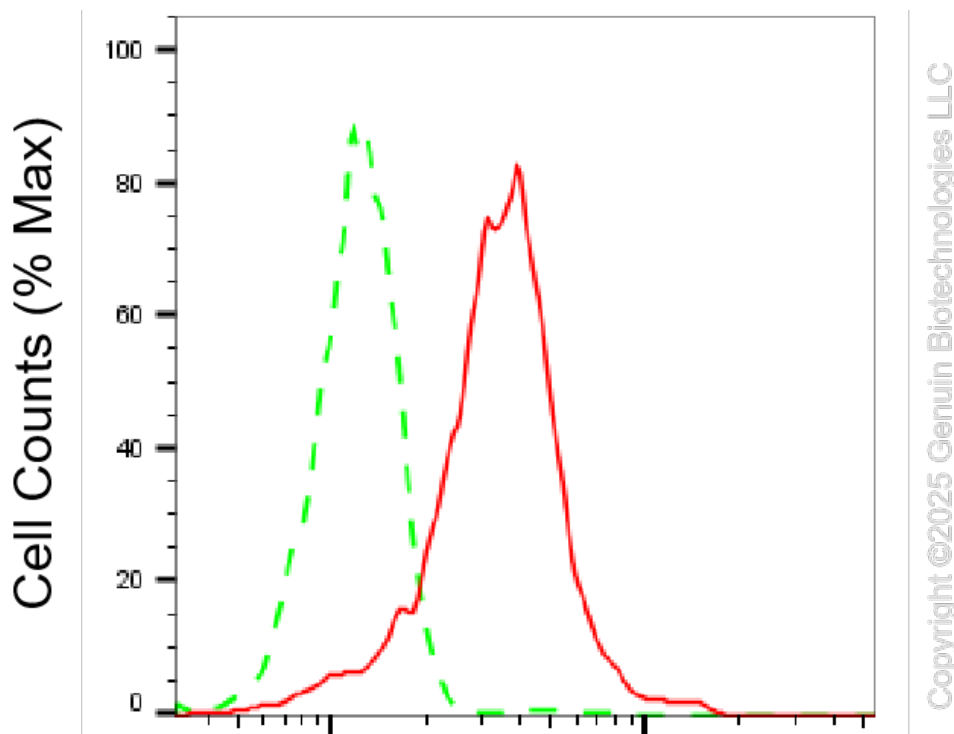
[WWW.GENUINBIOTECH.COM](http://WWW.GENUINBIOTECH.COM)

# KD-Validated Anti-CGRP Receptor Component Recombinant Rabbit Monoclonal Antibody

PAGE 2

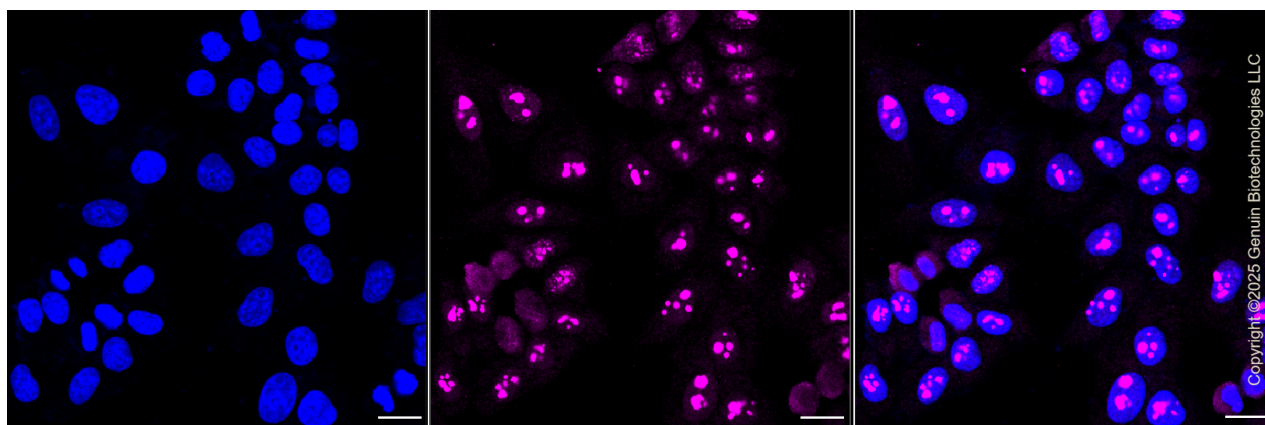
**Note:** This product is for research use only.

## Validation Data



## CGRP receptor component-Alexa Fluor® 647

Flow cytometric analysis of CGRP receptor component expression in HepG2 cells using anti-CGRP receptor component antibody (Cat#61612, 1:2,000). Green, isotype control; red, CGRP receptor component.



Immunocytochemical staining of HepG2 cells with CGRP receptor component antibody (Cat#61612, 1:1,000). Nuclei were stained blue with DAPI; CGRP receptor component was stained magenta with Alexa Fluor® 647. Images were taken using Leica stellaris 5. Protein

### SUPPORT

SUPPORT@GENUINBIOTECH.COM  
TEL: +1-540-855-7041

### ORDERS

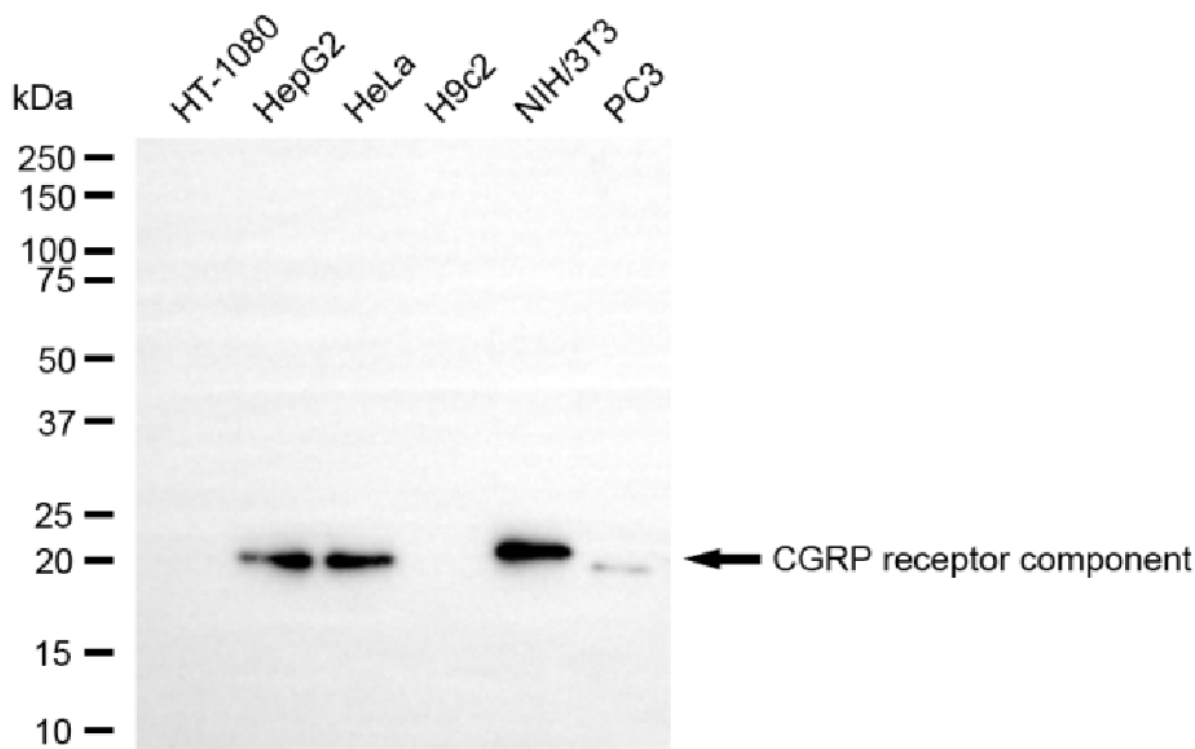
SALES@GENUINBIOTECH.COM  
FAX: +1-540-855-7041

WWW.GENUINBIOTECH.COM

## KD-Validated Anti-CGRP Receptor Component Recombinant Rabbit Monoclonal Antibody

PAGE 3

abundance based on laser Intensity and smart gain: High. Scale bar, 20  $\mu$ m.



Copyright ©2025 Genuin Biotechnologies LLC

Western blotting analysis using anti-CGRP receptor component antibody (Cat#61612). Total cell lysates (30  $\mu$ g) from various cell lines were loaded and separated by SDS-PAGE. The blot was incubated with anti-CGRP receptor component antibody (Cat#61612, 1:5,000) and HRP-conjugated goat anti-rabbit secondary antibody (Cat#201, 1:20,000) respectively. Image was developed using NaQ™ ECL Substrate Kit (Cat#716).

### SUPPORT

SUPPORT@GENUINBIOTECH.COM  
TEL: +1-540-855-7041

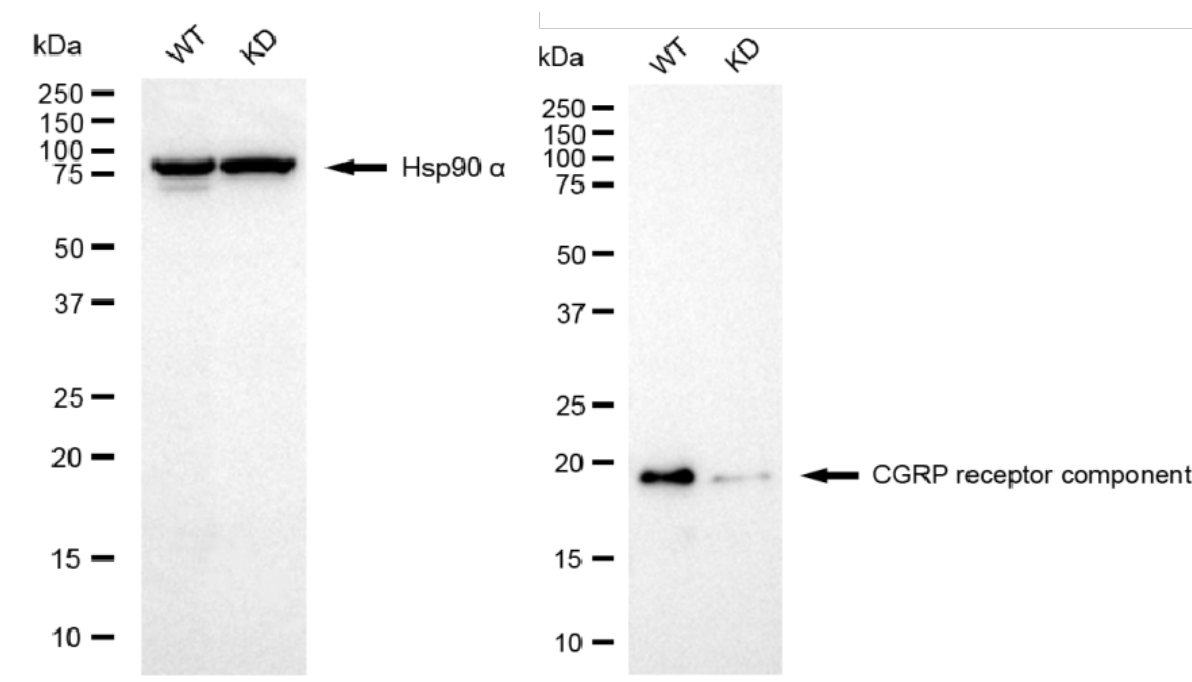
### ORDERS

SALES@GENUINBIOTECH.COM  
FAX: +1-540-855-7041

WWW.GENUINBIOTECH.COM

## KD-Validated Anti-CGRP Receptor Component Recombinant Rabbit Monoclonal Antibody

PAGE 4



Copyright ©2025 Genuin Biotechnologies LLC

Western blotting analysis using anti-CGRP receptor component antibody (Cat#61612). CGRP receptor component expression in wild-type (WT) and CGRP receptor component (CRCP) knockdown (KD) 293T cells with 20 µg of total cell lysates. Hsp90 α serves as a loading control. The blot was incubated with anti-CGRP receptor component antibody (Cat#61612, 1:5,000) and HRP-conjugated goat anti-rabbit secondary antibody (Cat#201, 1:20,000) respectively. Image was developed using NaQ™ ECL Substrate Kit (Cat#716).

### SUPPORT

SUPPORT@GENUINBIOTECH.COM  
TEL: +1-540-855-7041

### ORDERS

SALES@GENUINBIOTECH.COM  
FAX: +1-540-855-7041

[WWW.GENUINBIOTECH.COM](http://WWW.GENUINBIOTECH.COM)