

# KD-Validated Anti-C1QBP Recombinant Rabbit Monoclonal Antibody



**Catalog #: 61616**

## Aliases

C1QBP; Complement C1q Binding Protein; Hyaluronan-Binding Protein 1; GC1Q-R; SF2p32; GC1qR; HABP1; P32; Complement Component 1 Q Subcomponent-Binding Protein, Mitochondrial; Complement Component 1, Q Subcomponent Binding Protein; Splicing Factor SF2-Associated Protein; C1q Globular Domain-Binding Protein; Mitochondrial Matrix Protein P32; ASF/SF2-Associated Protein P32; Glycoprotein GC1qBP; SF2AP32; GC1QBP; P33; GC1q-R Protein; COXPD33; SF2P32; C1qBP

## Background

Gene Name: C1QBP

NCBI Gene Entry: [708](#)

UniProt Entry: [Q07021](#)

## Application Information

Molecular Weight: Predicted, 31 kDa, observed, 31 kDa

Clonality: Rabbit monoclonal antibody

Clone ID: 23GB690

Species Reactivity: Human, mouse, rat

Applications Tested: Western blotting (WB), flow cytometry (FCM), immunocytochemistry (IC)

## Immunogen

A synthesized peptide derived from human GC1q R

## Isotype

Rabbit IgG

## Storage Buffer

Supplied in PBS (pH 7.4) containing 50% glycerol, and 0.02% sodium azide.

## Storage

Store at -20 °C for one year.

## Recommended Dilutions

Western Blotting (WB): 1:1,000-1:5,000

Flow Cytometry (FCM): 1:2,000

Immunocytochemistry (IC): 1:100-1:1,000

---

### SUPPORT

SUPPORT@GENUINBIOTECH.COM  
TEL: +1-540-855-7041

### ORDERS

SALES@GENUINBIOTECH.COM  
FAX: +1-540-855-7041

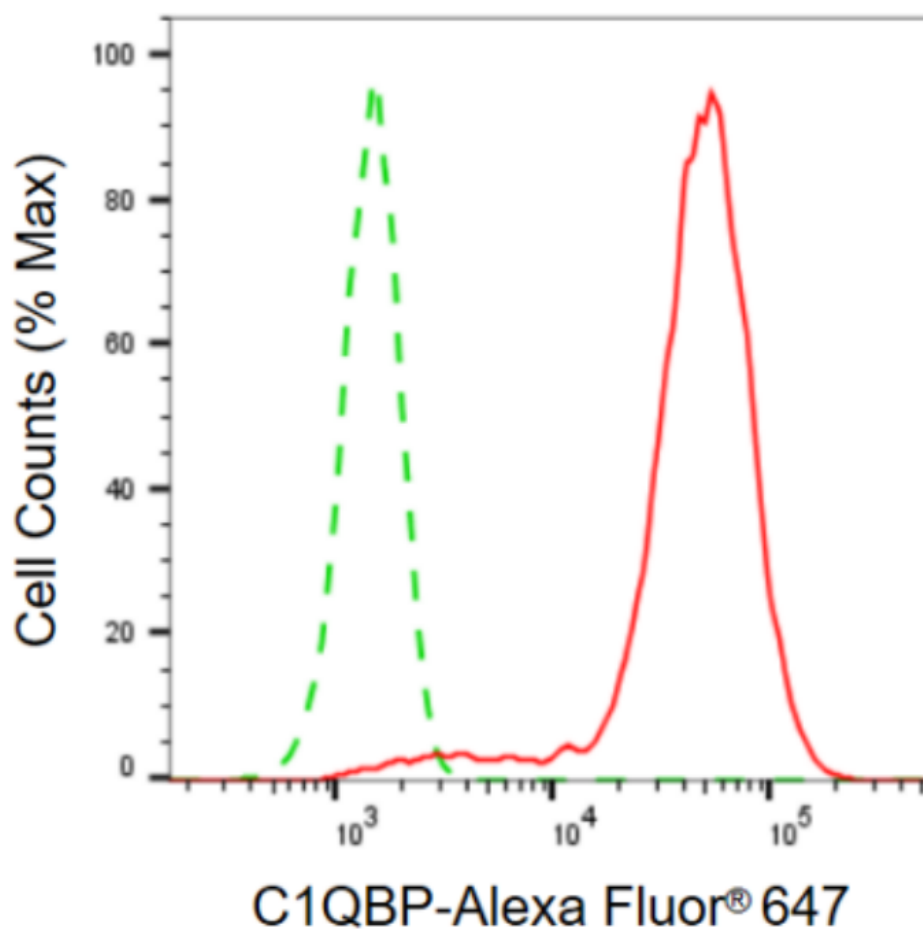
[WWW.GENUINBIOTECH.COM](http://WWW.GENUINBIOTECH.COM)

# KD-Validated Anti-C1QBP Recombinant Rabbit Monoclonal Antibody

PAGE 2

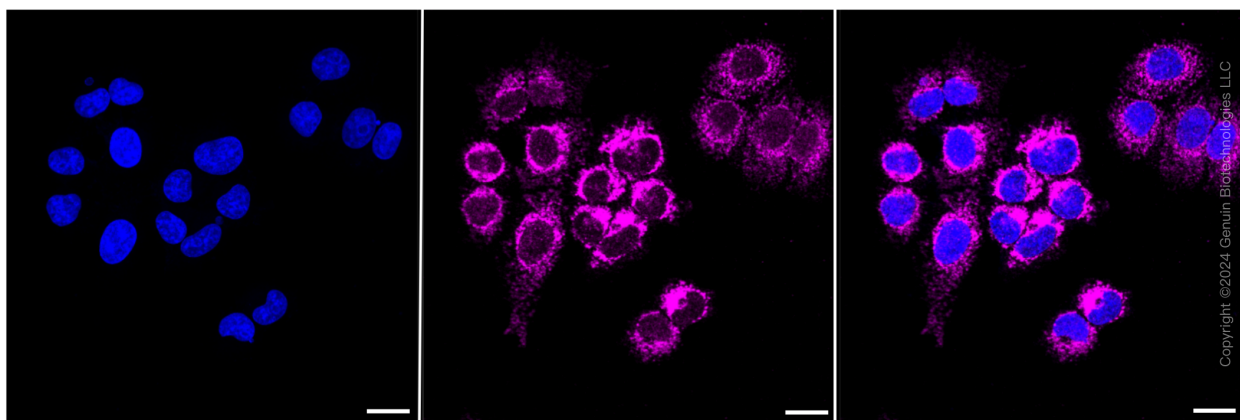
**Note:** This product is for research use only.

## Validation Data



Copyright ©2024 Genuin Biotechnologies LLC

Flow cytometric analysis of C1QBP expression in HepG2 cells using C1QBP antibody (Cat#61616, 1:2,000). Green, isotype control; red, C1QBP.



Copyright ©2024 Genuin Biotechnologies LLC

### SUPPORT

SUPPORT@GENUINBIOTECH.COM  
TEL: +1-540-855-7041

### ORDERS

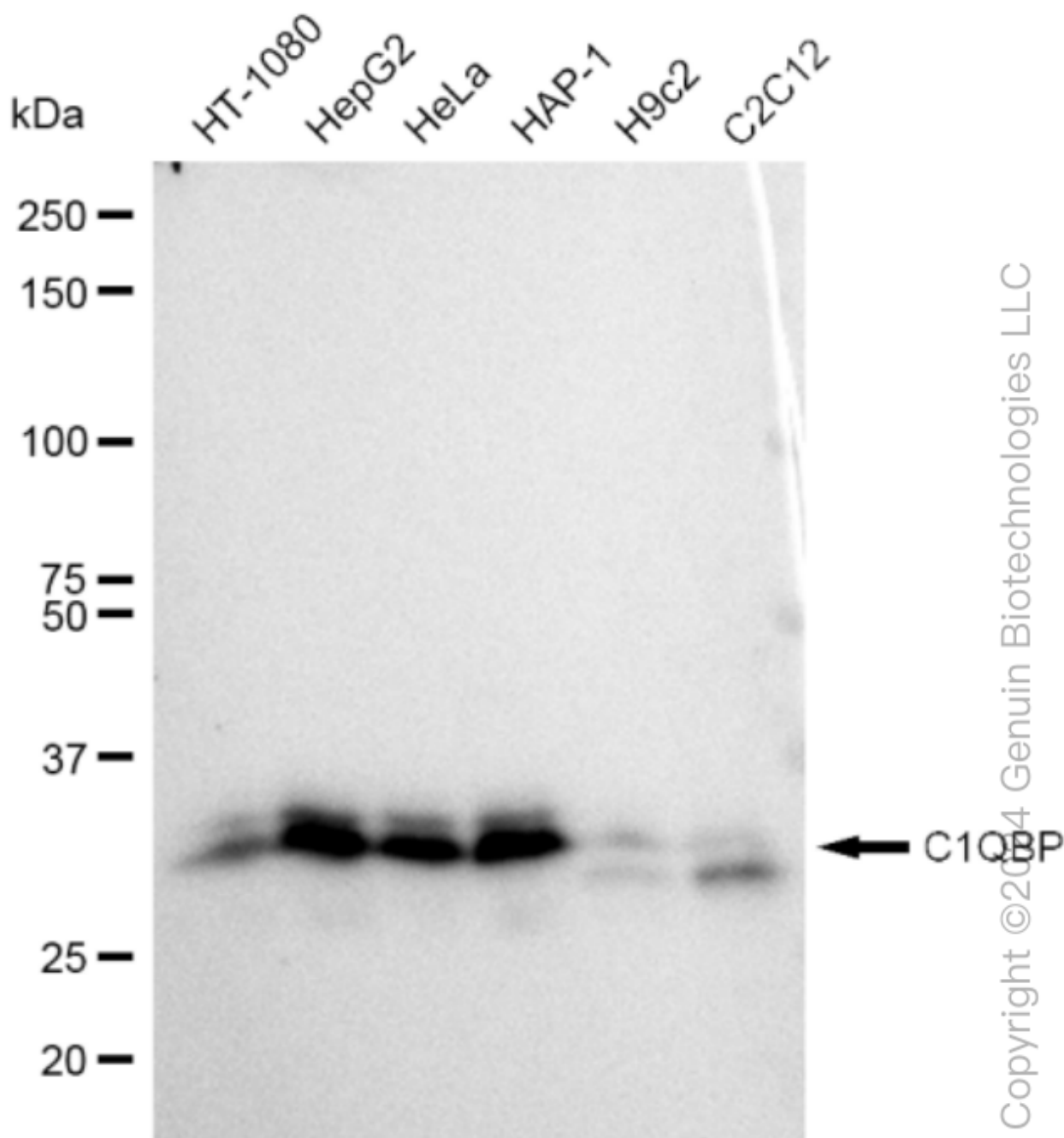
SALES@GENUINBIOTECH.COM  
FAX: +1-540-855-7041

WWW.GENUINBIOTECH.COM

## KD-Validated Anti-C1QBP Recombinant Rabbit Monoclonal Antibody

PAGE 3

Immunocytochemical staining of HepG2 cells with C1QBP antibody (Cat#61616, 1:1,000). Nuclei were stained blue with DAPI; C1QBP was stained magenta with Alexa Fluor® 647. Images were taken using Leica stellaris 5. Protein abundance based on laser Intensity and smart gain: Medium. Scale bar: 20  $\mu$ m.



Western blotting analysis using anti-C1QBP antibody (Cat#61616). Total cell lysates (30  $\mu$ g) from various cell lines were loaded and separated by SDS-PAGE. The blot was incubated with anti-C1QBP antibody (Cat#61616, 1:5,000) and HRP-conjugated goat anti-rabbit secondary antibody (Cat#201, 1:50,000) respectively. Image was developed using FeQ™ ECL Substrate Kit

### SUPPORT

SUPPORT@GENUINBIOTECH.COM  
TEL: +1-540-855-7041

### ORDERS

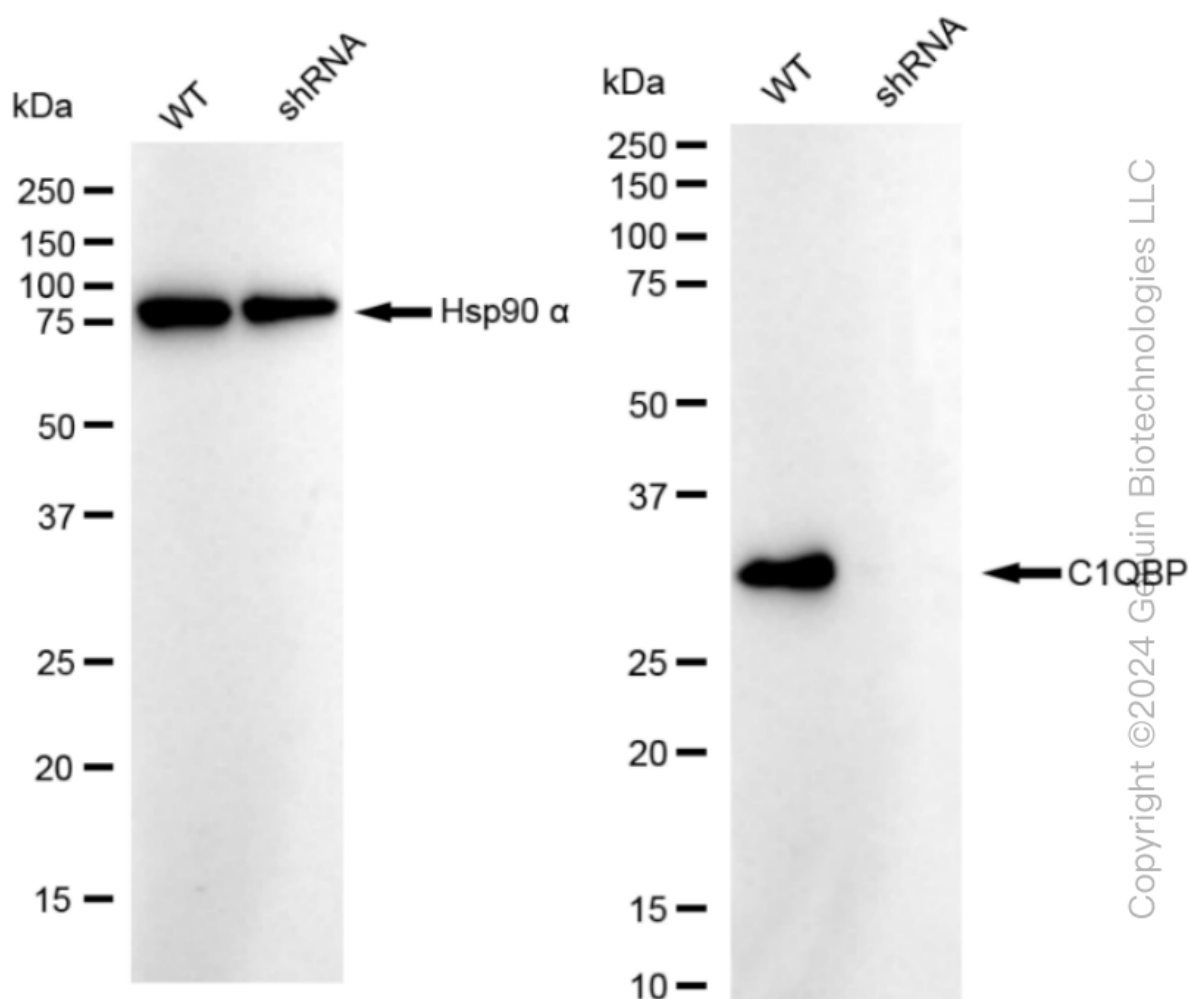
SALES@GENUINBIOTECH.COM  
FAX: +1-540-855-7041

WWW.GENUINBIOTECH.COM

## KD-Validated Anti-C1QBP Recombinant Rabbit Monoclonal Antibody

PAGE 4

(Cat#226).



Western blotting analysis using anti-C1QBP antibody (Cat#61616). C1QBP expression in wild type (WT) and C1QBP shRNA knockdown (KD) HeLa cells with 30  $\mu$ g of total cell lysates.  $\beta$ -Tubulin serves as a loading control. The blot was incubated with anti-C1QBP antibody (Cat#61616, 1:5,000) and HRP-conjugated goat anti-rabbit secondary antibody (Cat#201, 1:50,000) respectively. Image was developed using FeQ™ ECL Substrate Kit (Cat#226).

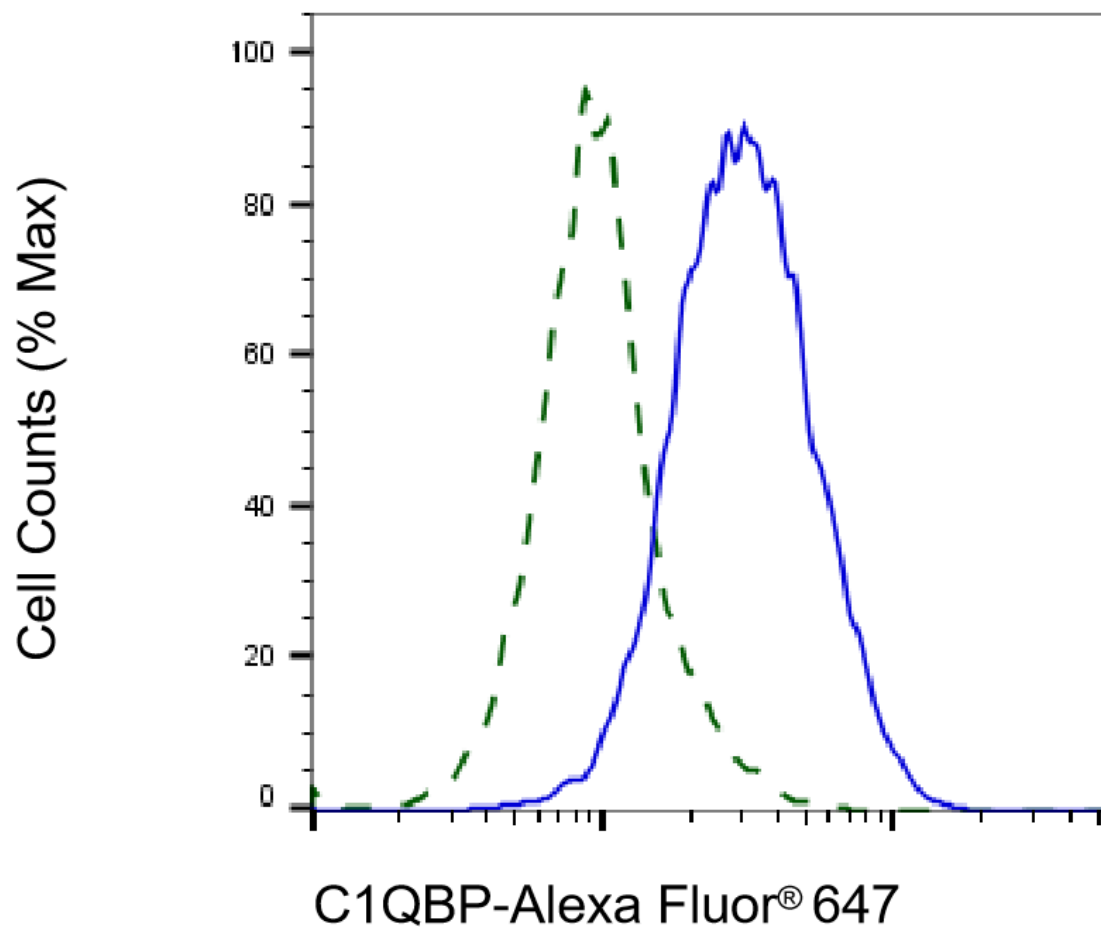
### SUPPORT

SUPPORT@GENUINBIOTECH.COM  
TEL: +1-540-855-7041

### ORDERS

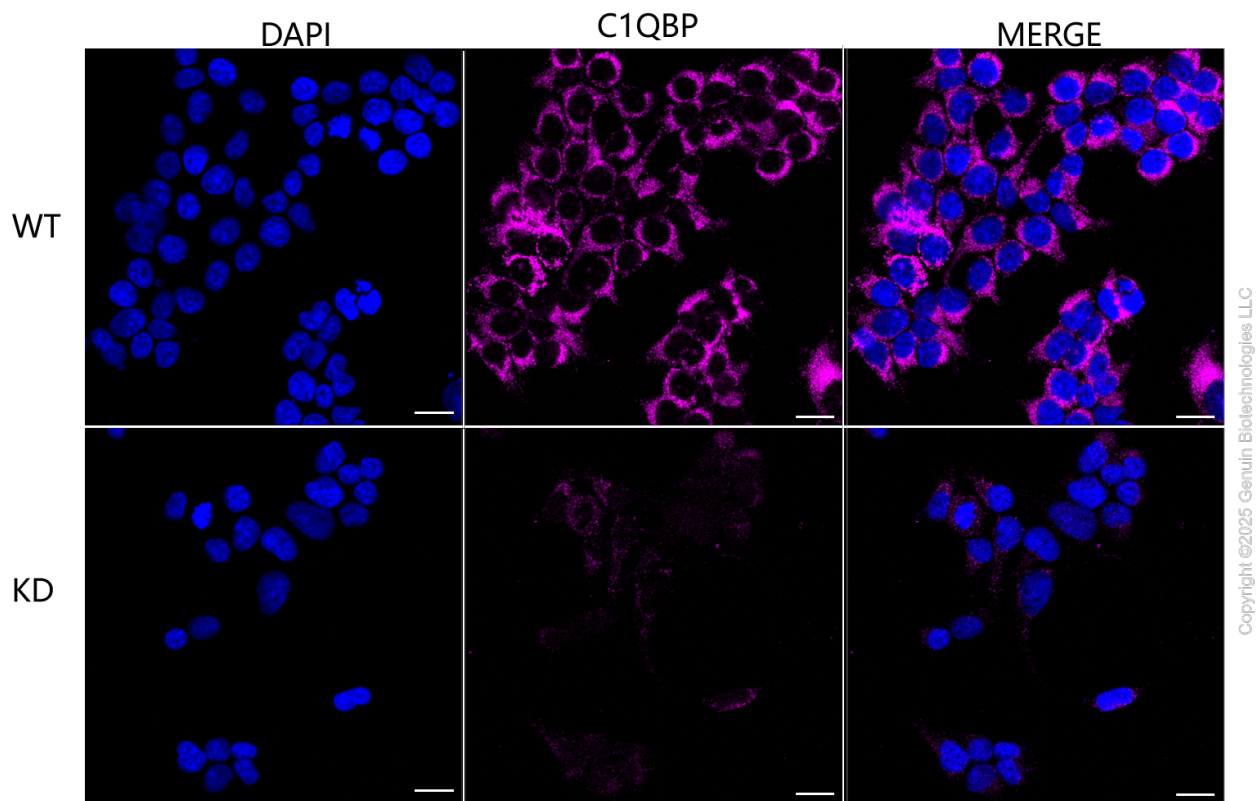
SALES@GENUINBIOTECH.COM  
FAX: +1-540-855-7041

WWW.GENUINBIOTECH.COM



Copyright ©2025 Genuin Biotechnologies LLC

Validation of C1QBP knockdown using flow cytometry. Wild-type(WT, Blue) and knockdown(KD, Green) HeLa cells were stained with anti-C1QBP antibody (Cat#61616, 1:2,000) and analyzed using BD flow cytometer.



Immunocytochemical staining of HeLa cells using anti-C1QBP antibody (Cat#61616, 1:1,000), Top panel: wild-type (WT); Bottom panel: C1QBP shRNA knockdown (KD). Nuclei were stained blue with DAPI; C1QBP was stained magenta with Alexa Fluor® 647. Scale bar, 20  $\mu$ m. Permeabilization: Triton.