

# KD-Validated Anti-Calsyntenin 1 Recombinant Rabbit Monoclonal Antibody



**Catalog #: 61618**

## Aliases

CLSTN1; Calsyntenin 1; KIAA0911; CDHR12; CSTN1; Alzheimer-Related Cadherin-Like Protein; Cadherin-Related Family Member 12; Non-Classical Cadherin XB31alpha; Alcadein-Alpha; Calsyntenin-1; ALC-ALPHA; XB31alpha; Alcalpha1; Alcalpha2; Alc-Alpha; PIK3CD; CST-1; CS1

## Background

Gene Name: CLSTN1

NCBI Gene Entry: [22883](#)

UniProt Entry: [O94985](#)

## Application Information

Molecular Weight: Predicted, 110 kDa, observed, 150 kDa

Clonality: Rabbit monoclonal antibody

Clone ID: 23GB3725

Species Reactivity: Human, mouse, rat

Applications Tested: Western blotting (WB), flow cytometry (FCM), immunocytochemistry (IC)

## Immunogen

A synthesized peptide derived from human CLSTN1

## Isotype

Rabbit IgG

## Storage Buffer

Supplied in PBS (pH 7.4) containing 50% glycerol, and 0.02% sodium azide.

## Storage

Store at -20 °C for one year.

## Recommended Dilutions

Western Blotting (WB): 1:1,000-1:5,000

Flow Cytometry (FCM): 1:2,000

Immunocytochemistry (IC): 1:100-1:1,000

---

### SUPPORT

SUPPORT@GENUINBIOTECH.COM  
TEL: +1-540-855-7041

### ORDERS

SALES@GENUINBIOTECH.COM  
FAX: +1-540-855-7041

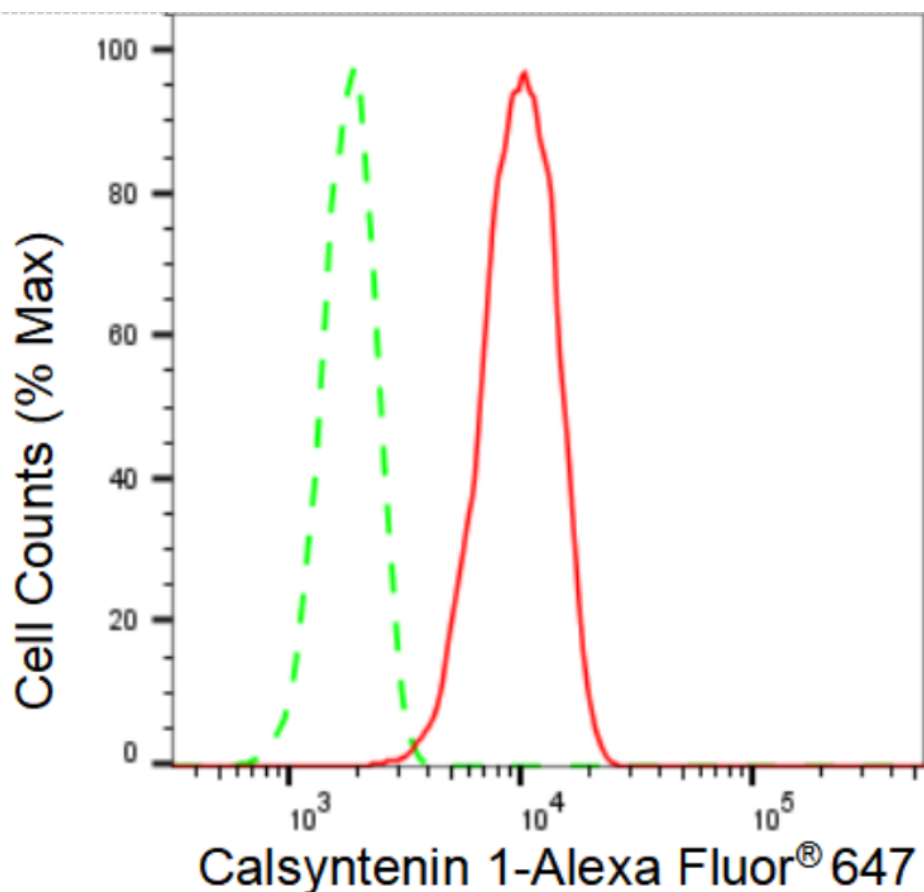
[WWW.GENUINBIOTECH.COM](http://WWW.GENUINBIOTECH.COM)

## KD-Validated Anti-Calsyntenin 1 Recombinant Rabbit Monoclonal Antibody

PAGE 2

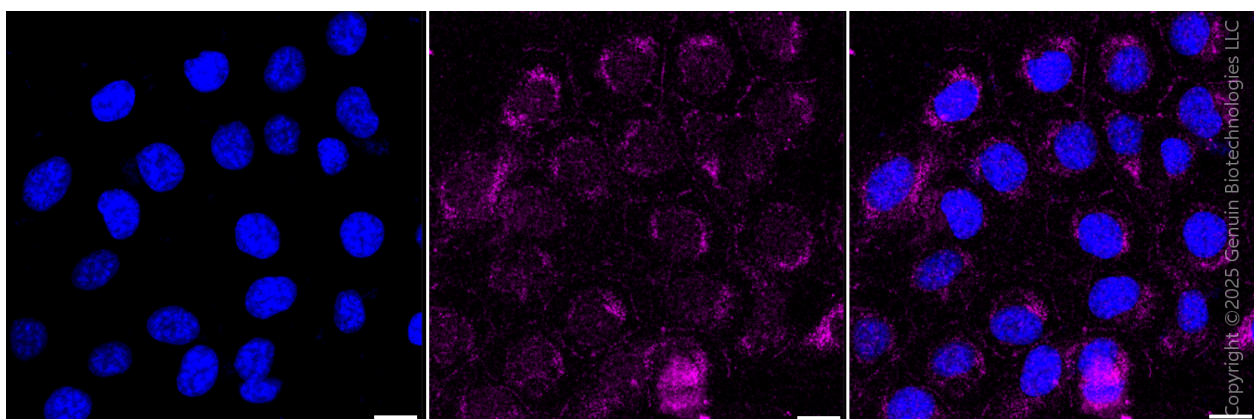
**Note:** This product is for research use only.

### Validation Data



Copyright ©2024 Genuin Biotechnologies LLC

Flow cytometric analysis of Calsyntenin 1 expression in HT-1080 cells using Calsyntenin 1 antibody (Cat#61618, 1:2,000). Green, isotype control; red, Calsyntenin 1.



Copyright ©2025 Genuin Biotechnologies LLC

#### SUPPORT

SUPPORT@GENUINBIOTECH.COM  
TEL: +1-540-855-7041

#### ORDERS

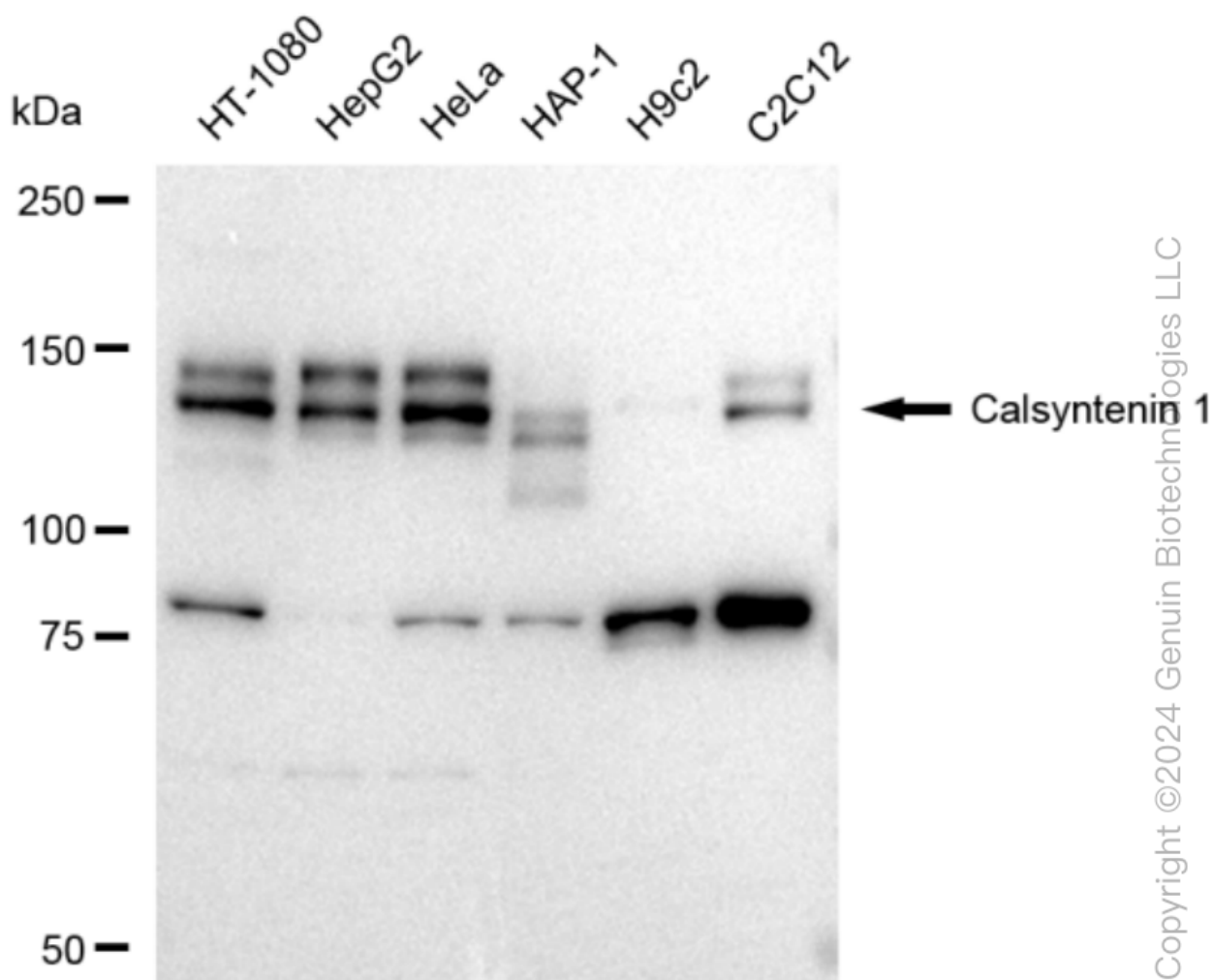
SALES@GENUINBIOTECH.COM  
FAX: +1-540-855-7041

[WWW.GENUINBIOTECH.COM](http://WWW.GENUINBIOTECH.COM)

## KD-Validated Anti-Calsyntenin 1 Recombinant Rabbit Monoclonal Antibody

PAGE 3

and smart gain: Medium. Scale bar, 20  $\mu$ m.



Western blotting analysis using anti-Calsyntenin 1 antibody (Cat#61618). Total cell lysates (30  $\mu$ g) from various cell lines were loaded and separated by SDS-PAGE. The blot was incubated with anti-Calsyntenin 1 antibody (Cat#61618, 1:5,000) and HRP-conjugated goat anti-rabbit secondary antibody (Cat#201, 1:20,000) respectively. Image was developed using FeQ™ ECL Substrate Kit (Cat#226).

### SUPPORT

SUPPORT@GENUINBIOTECH.COM  
TEL: +1-540-855-7041

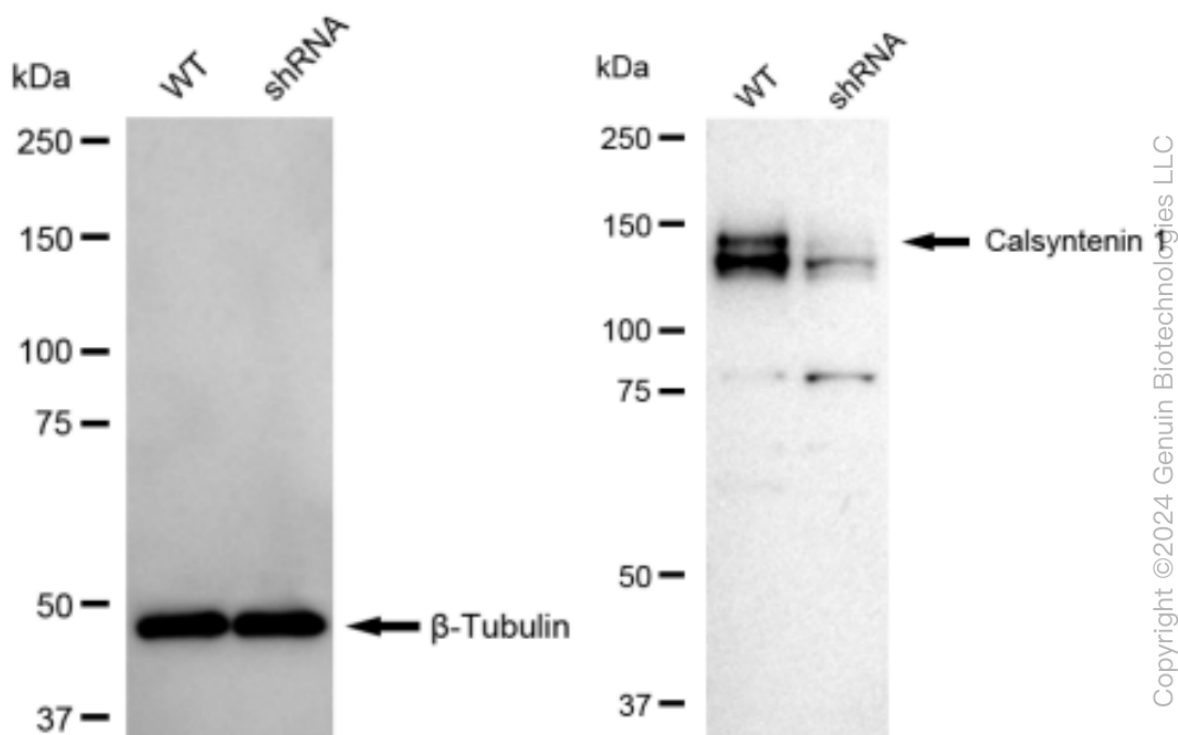
### ORDERS

SALES@GENUINBIOTECH.COM  
FAX: +1-540-855-7041

[WWW.GENUINBIOTECH.COM](http://WWW.GENUINBIOTECH.COM)

## KD-Validated Anti-Calsyntenin 1 Recombinant Rabbit Monoclonal Antibody

PAGE 4



Western blotting analysis using anti-Calsyntenin 1 antibody (Cat#61618). Calsyntenin 1 expression in wild type (WT) and Calsyntenin 1 shRNA knockdown (KD) HeLa cells with 30  $\mu$ g of total cell lysates.  $\beta$ -Tubulin serves as a loading control. The blot was incubated with anti-Calsyntenin 1 antibody (Cat#61618, 1:5,000) and HRP-conjugated goat anti-rabbit secondary antibody (Cat#201, 1:20,000) respectively. Image was developed using FeQ™ ECL Substrate Kit (Cat#226).

### SUPPORT

SUPPORT@GENUINBIOTECH.COM  
TEL: +1-540-855-7041

### ORDERS

SALES@GENUINBIOTECH.COM  
FAX: +1-540-855-7041

[WWW.GENUINBIOTECH.COM](http://WWW.GENUINBIOTECH.COM)