

KD-Validated Anti-CAPG Recombinant Rabbit Monoclonal Antibody



Catalog #: 61619

Aliases

CAPG; Capping Actin Protein, Gelsolin Like; MCP; AFCP; Capping Protein (Actin Filament), Gelsolin-Like; Macrophage-Capping Protein; Epididymis Secretory Protein Li 66; Actin-Regulatory Protein CAP-G; Actin Regulatory Protein CAP-G; Gelsolin-Like Capping Protein; Macrophage Capping Protein; HEL-S-66

Background

Gene Name: CAPG

NCBI Gene Entry: [822](#)

UniProt Entry: [P40121](#)

Application Information

Molecular Weight: Predicted, 38 kDa, observed, 38 kDa

Clonality: Rabbit monoclonal antibody

Clone ID: 25GB3045

Species Reactivity: Human, mouse, rat

Applications Tested: Western blotting (WB), flow cytometry (FCM), immunocytochemistry (IC)

Immunogen

A synthesized peptide derived from human CAPG

Isotype

Rabbit IgG

Storage Buffer

Supplied in PBS (pH 7.4) containing 50% glycerol, and 0.02% sodium azide.

Storage

Store at -20 °C for one year.

Recommended Dilutions

Western blotting (WB): 1:1,000-1:5,000

Flow Cytometry (FCM): 1:2,000

Immunocytochemistry (IC): 1:100-1:1,000

SUPPORT

SUPPORT@GENUINBIOTECH.COM
TEL: +1-540-855-7041

ORDERS

SALES@GENUINBIOTECH.COM
FAX: +1-540-855-7041

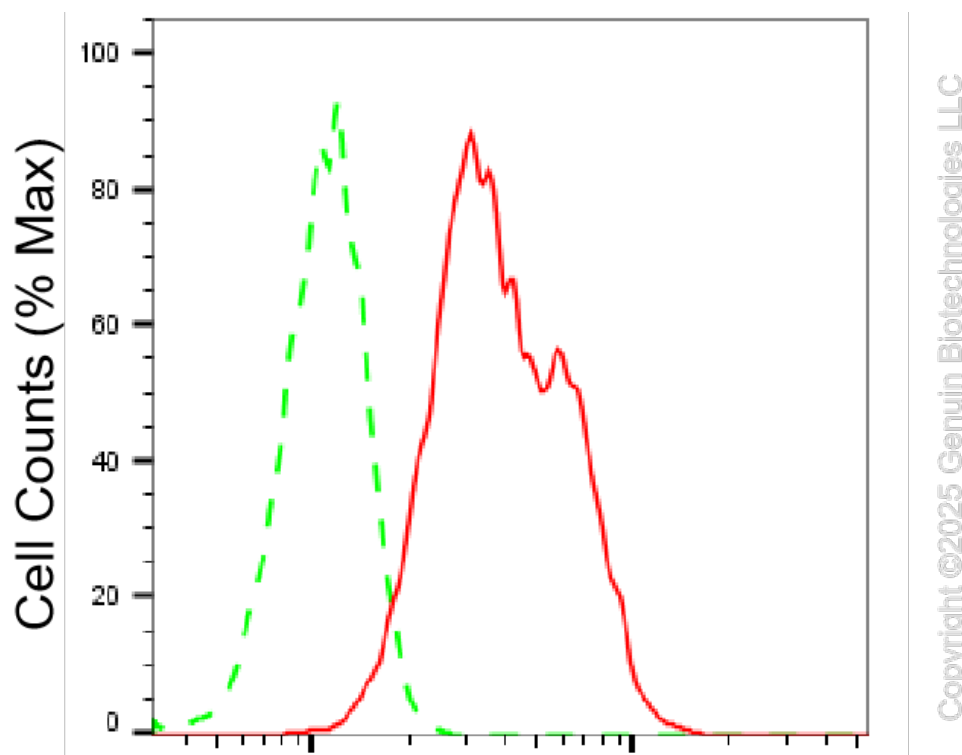
WWW.GENUINBIOTECH.COM

KD-Validated Anti-CAPG Recombinant Rabbit Monoclonal Antibody

PAGE 2

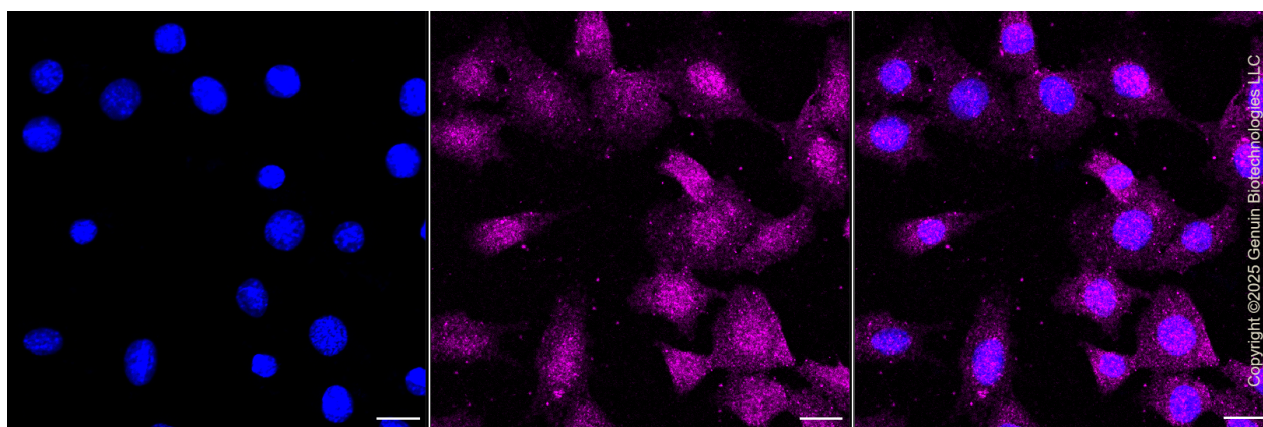
Note: This product is for research use only.

Validation Data



CAPG-Alexa Fluor® 647

Flow cytometric analysis of CAPG expression in C2C12 cells using anti-CAPG antibody (Cat#61619, 1:2,000). Green, isotype control; red, CAPG.



Immunocytochemical staining of C2C12 cells with anti-CAPG antibody (Cat#61619, 1:1,000). Nuclei were stained blue with DAPI; CAPG was stained magenta with Alexa Fluor® 647. Images were taken using Leica stellaris 5. Protein abundance based on laser Intensity and smart gain: Medium. Scale bar, 20 μ m.

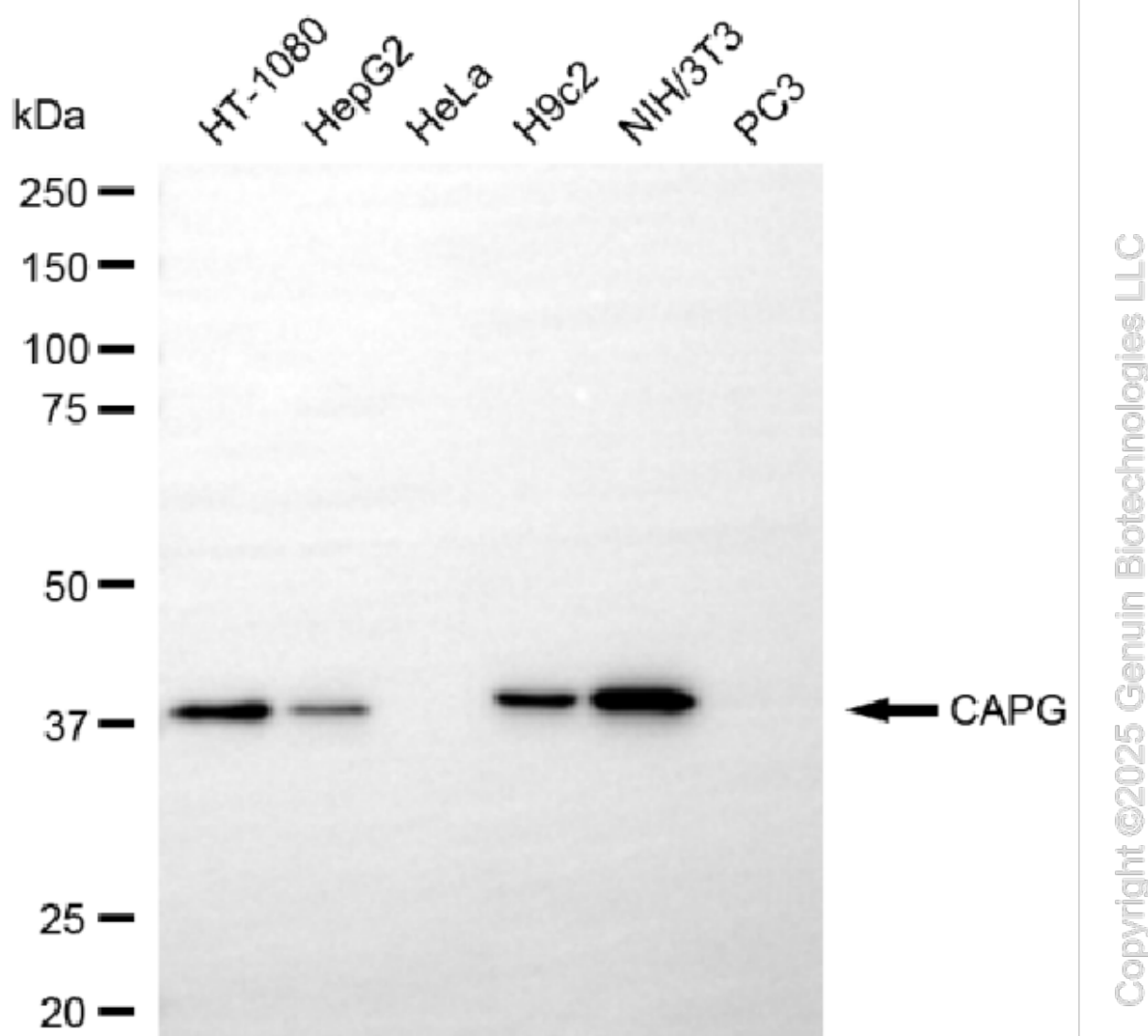
SUPPORT

SUPPORT@GENUINBIOTECH.COM
TEL: +1-540-855-7041

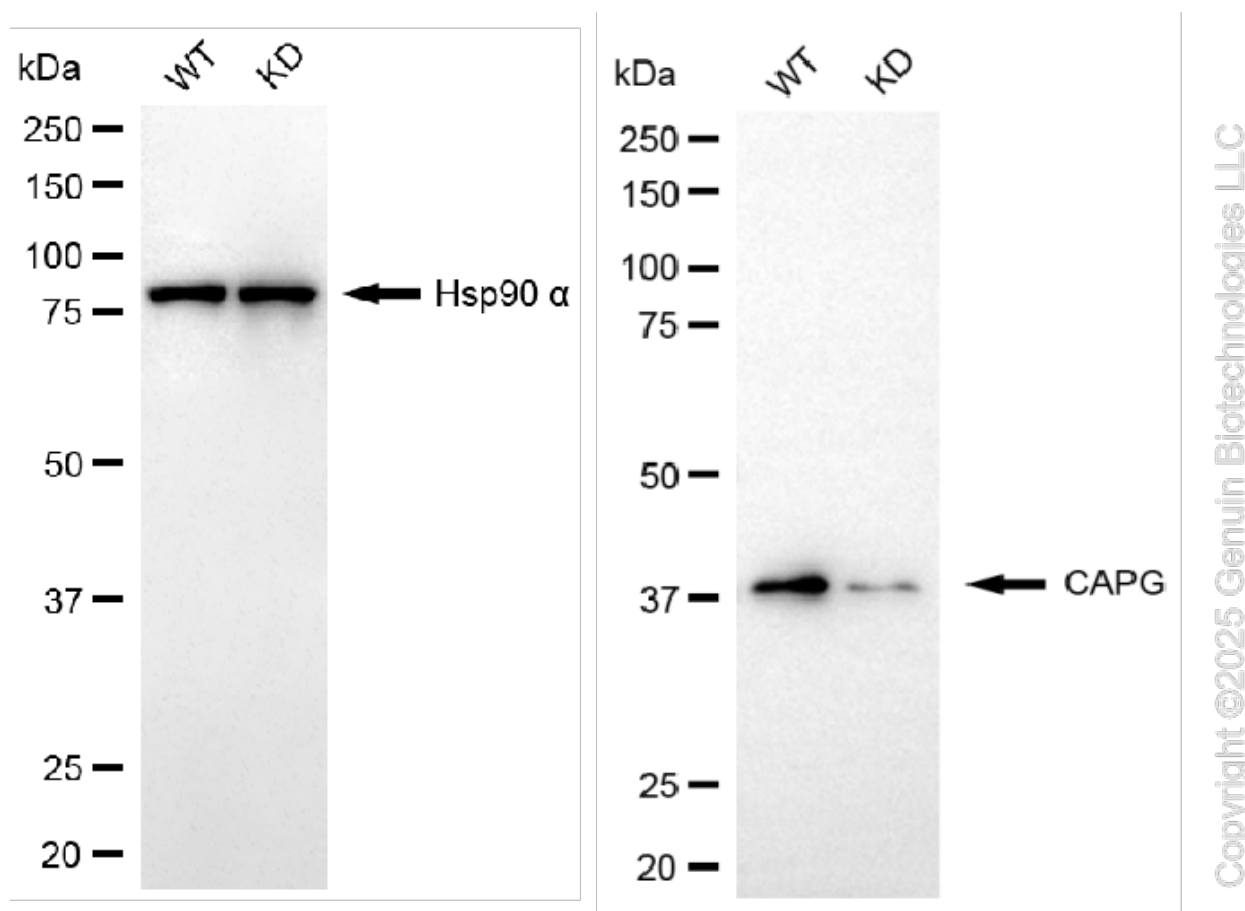
ORDERS

SALES@GENUINBIOTECH.COM
FAX: +1-540-855-7041

WWW.GENUINBIOTECH.COM



Western blotting analysis using anti-CAPG antibody (Cat#61619). Total cell lysates (30 μ g) from various cell lines were loaded and separated by SDS-PAGE. The blot was incubated with anti-CAPG antibody (Cat#61619, 1:5,000) and HRP-conjugated goat anti-rabbit secondary antibody (Cat#201, 1:20,000) respectively. Image was developed using NaQTM ECL Substrate Kit (Cat#716).



Western blotting analysis using anti-CAPG antibody (Cat#61619). CAPG expression in wild-type (WT) and CAPG knockdown (KD) HT-1080 cells with 20 μ g of total cell lysates. Hsp90 α serves as a loading control. The blot was incubated with anti-CAPG antibody (Cat#61619, 1:5,000) and HRP-conjugated goat anti-rabbit secondary antibody (Cat#201, 1:20,000) respectively. Image was developed using NaQTM ECL Substrate Kit (Cat#716).