

Catalog #: 61620

Aliases

SYNE1; Spectrin Repeat Containing Nuclear Envelope Protein 1; Nesprin-1; Enaptin; MYNE1; Myocyte Nuclear Envelope Protein 1; KIAA0796; DJ45H2.2; C6orf98; SCAR8; ARCA1; Nesp1; CPG2; 8B; Spectrin Repeat Containing, Nuclear Envelope 1; Synaptic Nuclear Envelope Protein 1; KASH Domain-Containing Protein 1; SYNE-1B; KASH1; Nuclear Envelope Spectrin Repeat Protein 1; Nuclear Envelope Spectrin Repeat-1; Chromosome 6 Open Reading Frame 98; Synaptic Nuclei Expressed Gene 1; CPG2 Full Length; EC 4.2.1.49; EC 4.3.1.3; Nesprin 1; KIAA1262; KIAA1756; Myne-1; Syne-1; EDMD4; AMC3; AMCM

Background

Gene Name: SYNE1

NCBI Gene Entry: [23345](#)

UniProt Entry: [Q8NF91](#)

Application Information

Molecular Weight: Predicted, 112 kDa; observed, 140 kDa

Clonality: Rabbit monoclonal antibody

Clone ID: 25GB3050

Species Reactivity: Human, mouse, rat

Applications Tested: Western blotting (WB), flow cytometry (FCM), immunocytochemistry (IC)

Immunogen

A synthesized peptide derived from human Nesprin 1

Isotype

Rabbit IgG

Storage Buffer

Supplied in PBS (pH 7.4) containing 50% glycerol, and 0.02% sodium azide.

Storage

Store at -20 °C for one year.

Recommended Dilutions

Western Blotting (WB): 1:1,000-1:5,000

Flow Cytometry (FCM): 1:2,000

SUPPORT

SUPPORT@GENUINBIOTECH.COM
TEL: +1-540-855-7041

ORDERS

SALES@GENUINBIOTECH.COM
FAX: +1-540-855-7041

WWW.GENUINBIOTECH.COM

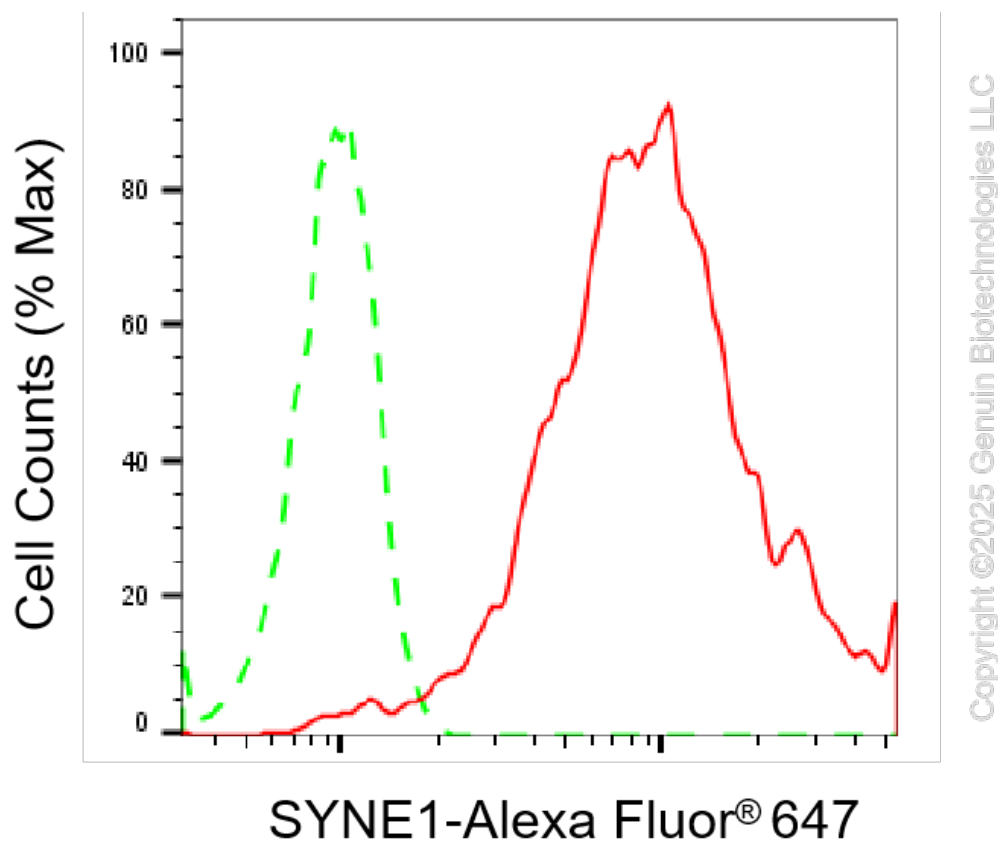
KD-Validated Anti-SYNE1 Recombinant Rabbit Monoclonal Antibody

PAGE 2

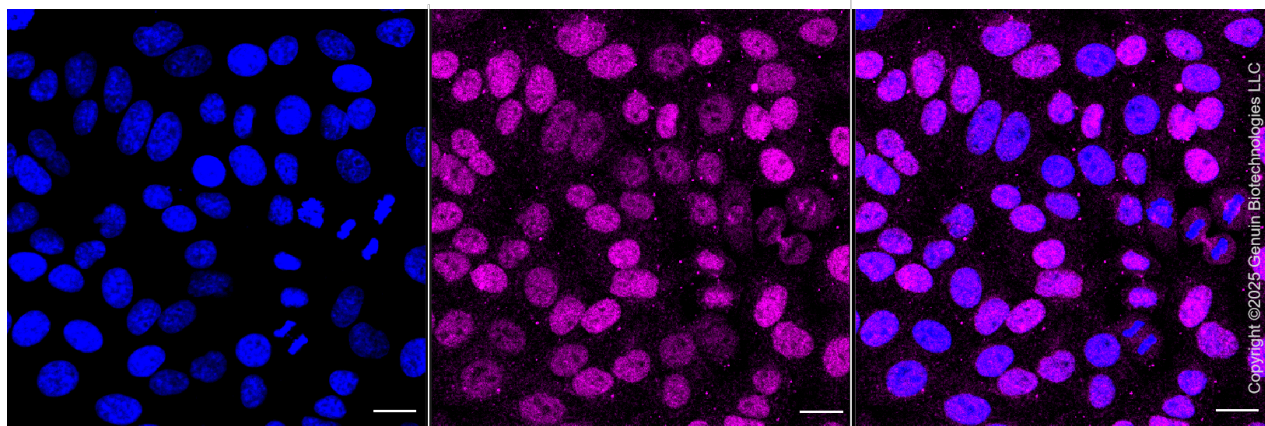
Immunocytochemistry (IC): 1:100-1:1,000

Note: This product is for research use only.

Validation Data



Flow cytometric analysis of SYNE1 expression in HepG2 cells using anti-SYNE1 antibody (Cat#61620, 1:2,000). Green, isotype control; red, SYNE1.



Immunocytochemical staining of HepG2 cells with anti-SYNE1 antibody (Cat#61620, 1:1,000).

SUPPORT

SUPPORT@GENUINBIOTECH.COM
TEL: +1-540-855-7041

ORDERS

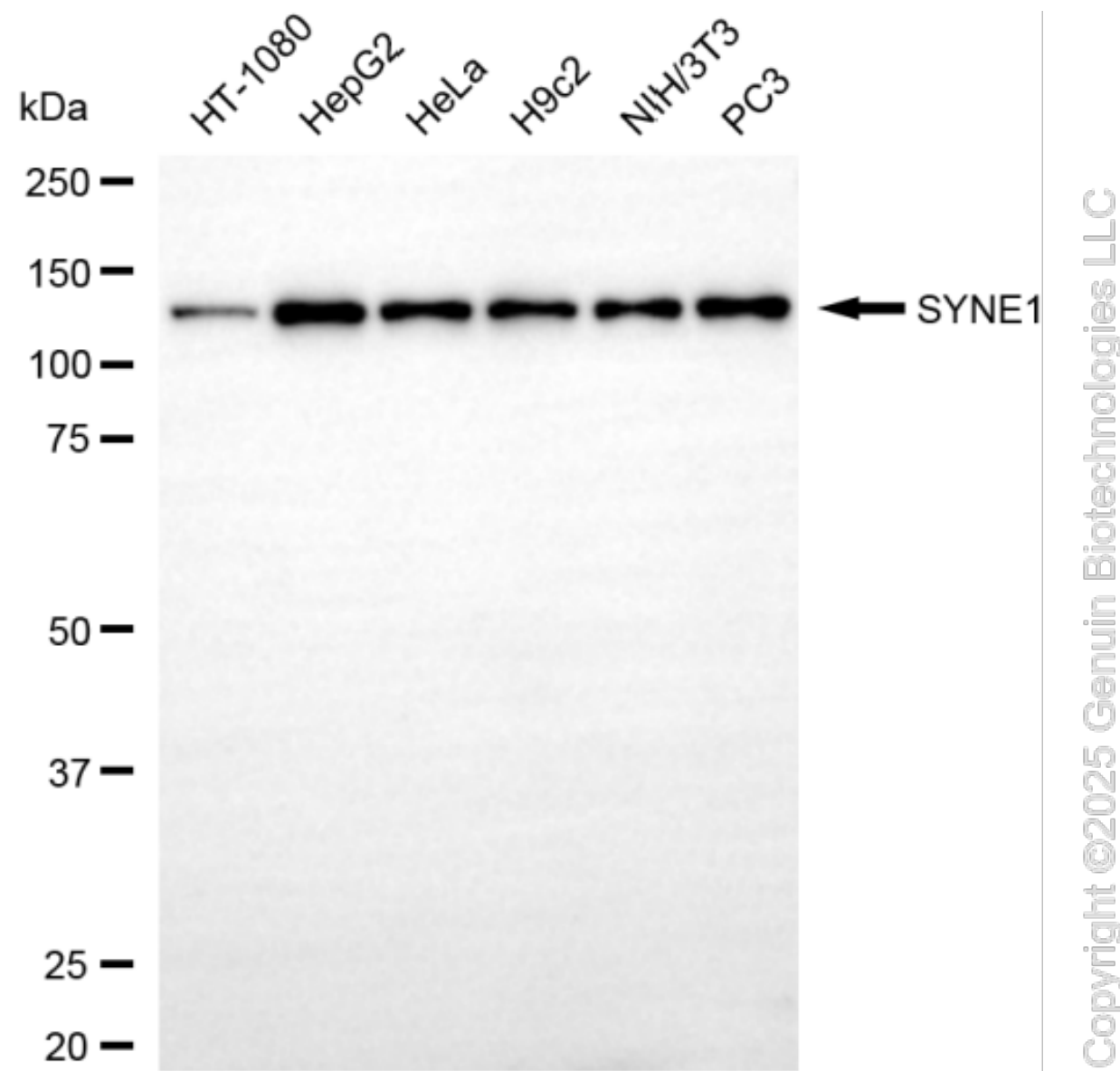
SALES@GENUINBIOTECH.COM
FAX: +1-540-855-7041

WWW.GENUINBIOTECH.COM

KD-Validated Anti-SYNE1 Recombinant Rabbit Monoclonal Antibody

PAGE 3

Nuclei were stained blue with DAPI; SYNE1 was stained magenta with Alexa Fluor® 647. Images were taken using Leica stellaris 5. Protein abundance based on laser Intensity and smart gain: Medium. Scale bar, 20 µm.



Western blotting analysis using anti-SYNE1 antibody (Cat#61620). Total cell lysates (30 µg) from various cell lines were loaded and separated by SDS-PAGE. The blot was incubated with anti-SYNE1 antibody (Cat#61620, 1:5,000) and HRP-conjugated goat anti-rabbit secondary antibody (Cat#201, 1:20,000) respectively. Image was developed using FeQ™ ECL Substrate Kit (Cat#226).

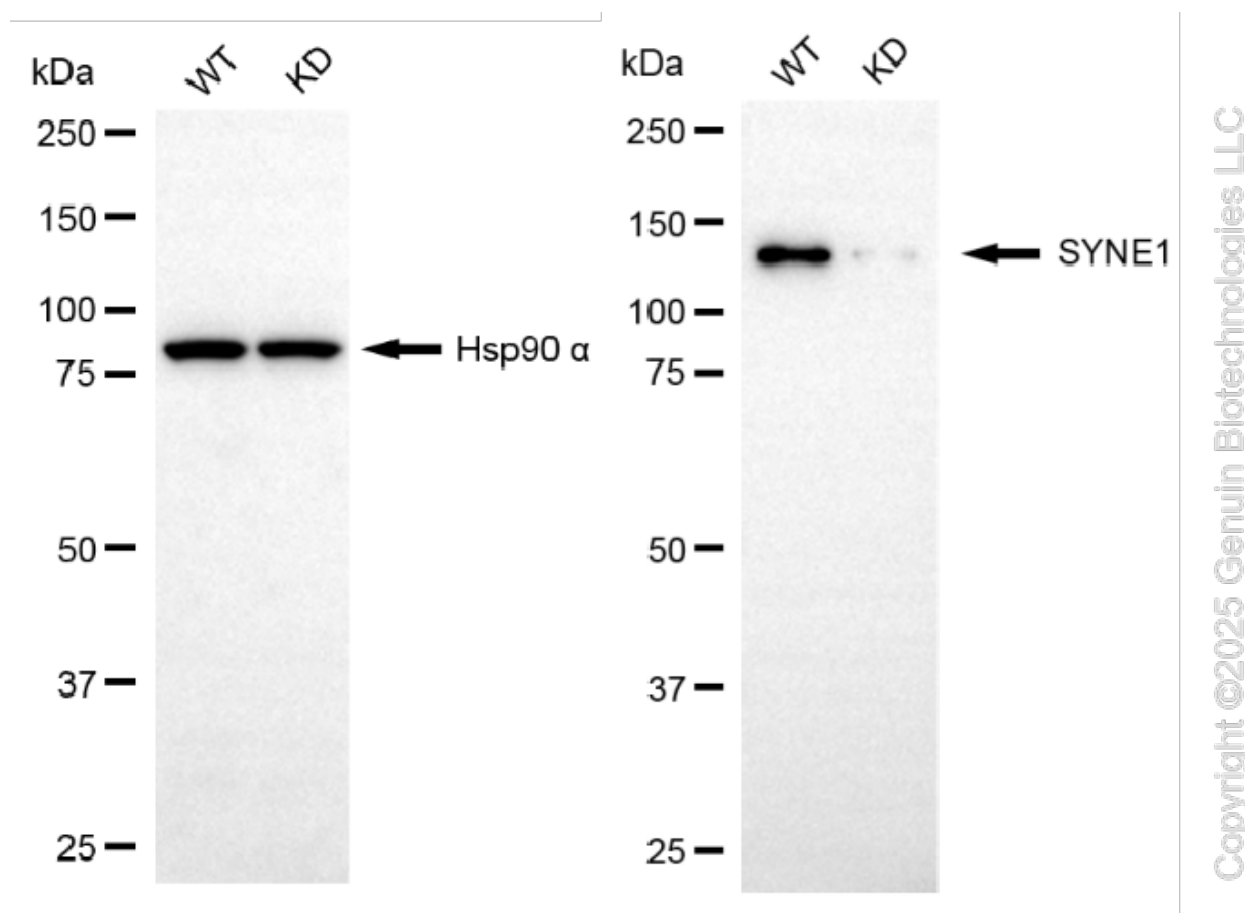
SUPPORT

SUPPORT@GENUINBIOTECH.COM
TEL: +1-540-855-7041

ORDERS

SALES@GENUINBIOTECH.COM
FAX: +1-540-855-7041

WWW.GENUINBIOTECH.COM



Western blotting analysis using anti-SYNE1 antibody (Cat#61620). SYNE1 expression in wild-type (WT) and SYNE1 knockdown (KD) HeLa cells with 20 µg of total cell lysates. Hsp90 α serves as a loading control. The blot was incubated with anti-SYNE1 antibody (Cat#61620, 1:5,000) and HRP-conjugated goat anti-rabbit secondary antibody (Cat#201, 1:20,000) respectively. Image was developed using NaQ™ ECL Substrate Kit (Cat#716).