

KD-Validated Anti-COPS3 Recombinant Rabbit Monoclonal Antibody



Catalog #: 61623

Aliases

COPS3; COP9 Signalosome Subunit 3; SGN3; CSN3; JAB1-Containing Signalosome Subunit 3; COP9 Signalosome Complex Subunit 3; Signalosome Subunit 3; COP9 (Constitutive Photomorphogenic, Arabidopsis, Homolog) Subunit 3; COP9 Constitutive Photomorphogenic Homolog Subunit 3 (Arabidopsis); COP9 Constitutive Photomorphogenic Homolog Subunit 3; COP9 Complex Subunit 3

Background

Gene Name: COPS3

NCBI Gene Entry: [8533](#)

UniProt Entry: [Q9UNS2](#)

Application Information

Molecular Weight: Predicted, 48 kDa, observed, 40-55 kDa

Clonality: Rabbit monoclonal antibody

Clone ID: 23GB3780

Species Reactivity: Human, mouse, rat

Applications Tested: Western blotting (WB), flow cytometry (FCM), immunocytochemistry (IC)

Immunogen

A synthesized peptide derived from human COPS3

Isotype

Rabbit IgG

Storage Buffer

Supplied in PBS (pH 7.4) containing 50% glycerol, and 0.02% sodium azide.

Storage

Store at -20 °C for one year.

Recommended Dilutions

Western Blotting (WB): 1:1,000-1:5,000

Flow Cytometry (FCM): 1:2,000

Immunocytochemistry (IC): 1:100-1:1,000

SUPPORT

SUPPORT@GENUINBIOTECH.COM
TEL: +1-540-855-7041

ORDERS

SALES@GENUINBIOTECH.COM
FAX: +1-540-855-7041

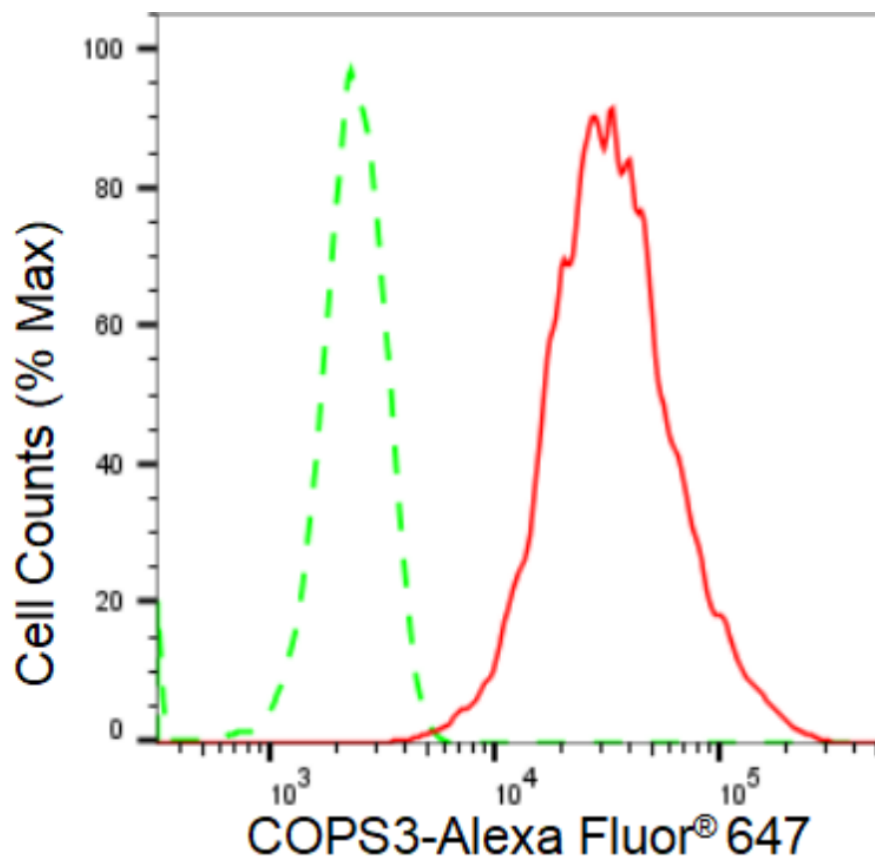
WWW.GENUINBIOTECH.COM

KD-Validated Anti-COPS3 Recombinant Rabbit Monoclonal Antibody

PAGE 2

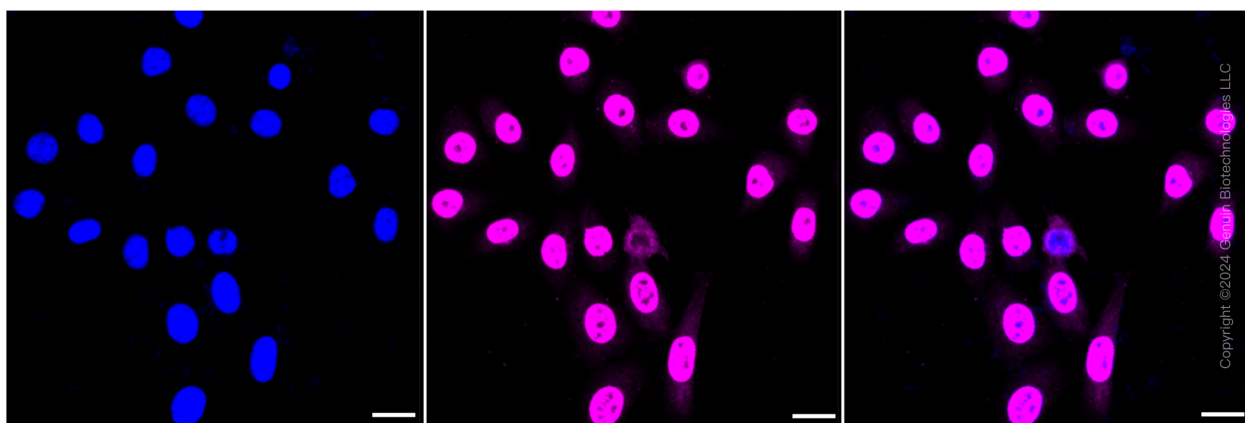
Note: This product is for research use only.

Validation Data



Copyright ©2024 Genuin Biotechnologies LLC

Flow cytometric analysis of COPS3 expression in HepG2 cells using COPS3 antibody (Cat#61623, 1:2,000). Green, isotype control; red, COPS3.



Copyright ©2024 Genuin Biotechnologies LLC

Immunocytochemical staining of HepG2 cells with COPS3 antibody (Cat#61623, 1:1,000). Nuclei were stained blue with DAPI; COPS3 was stained magenta with Alexa Fluor® 647. Images were taken using Leica stellaris 5. Protein abundance based on laser Intensity and smart gain: High. Scale bar: 20 μ m.

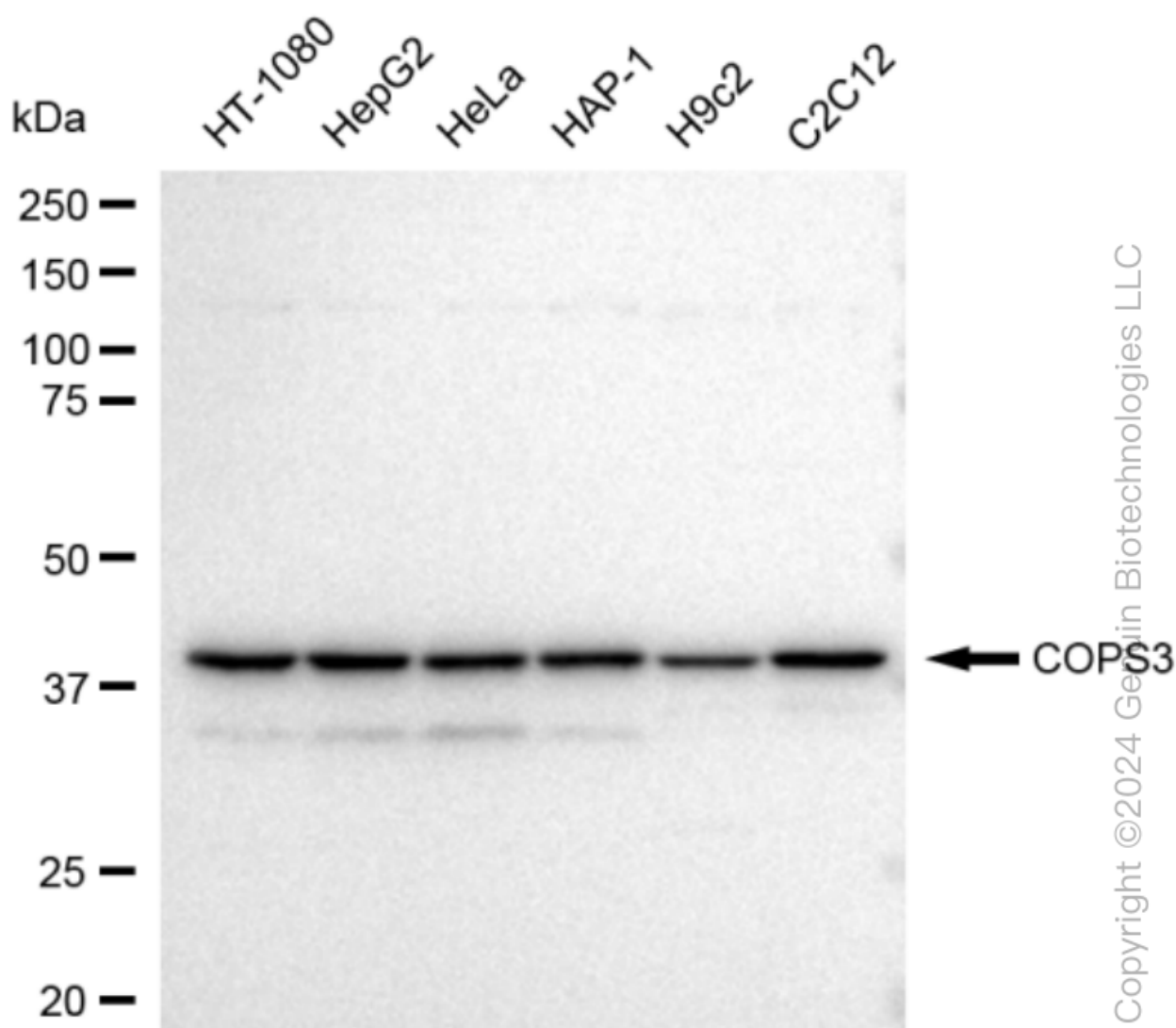
SUPPORT

SUPPORT@GENUINBIOTECH.COM
TEL: +1-540-855-7041

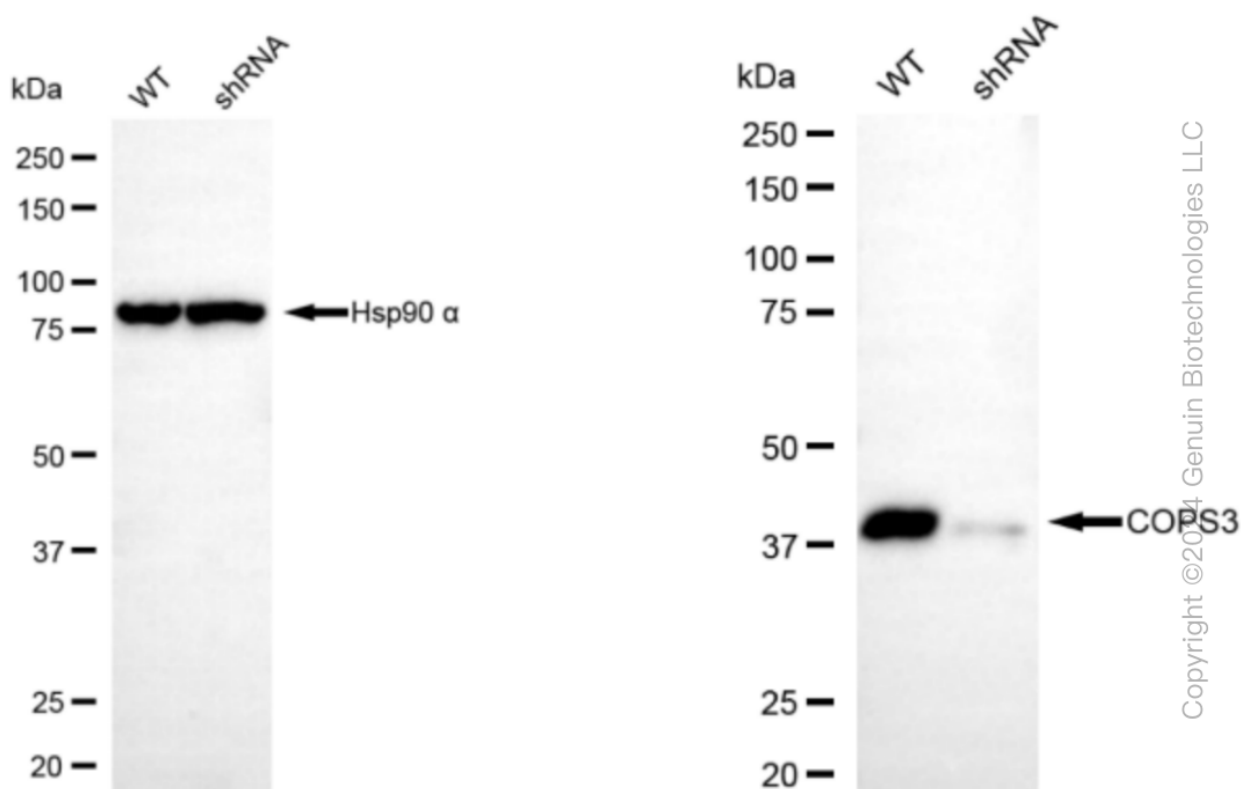
ORDERS

SALES@GENUINBIOTECH.COM
FAX: +1-540-855-7041

WWW.GENUINBIOTECH.COM



Western blotting analysis using anti-COPS3 antibody (Cat#61623). Total cell lysates (30 µg) from various cell lines were loaded and separated by SDS-PAGE. The blot was incubated with anti-COPS3 antibody (Cat#61623, 1:5,000) and HRP-conjugated goat anti-rabbit secondary antibody (Cat#201, 1:20,000) respectively. Image was developed using FeQ™ ECL Substrate Kit (Cat#226).



Western blotting analysis using anti-COPS3 antibody (Cat#61623). COPS3 expression in wild type (WT) and COPS3 shRNA knockdown (KD) HeLa cells with 30 μ g of total cell lysates. Hsp90 α serves as a loading control. The blot was incubated with anti-COPS3 antibody (Cat#61623, 1:5,000) and HRP-conjugated goat anti-rabbit secondary antibody (Cat#201, 1:20,000) respectively. Image was developed using FeQ™ ECL Substrate Kit (Cat#226).