

KD-Validated Anti-BUB1 Recombinant Rabbit Monoclonal Antibody



Catalog #: 61624

Aliases

BUB1; BUB1 Mitotic Checkpoint Serine/Threonine Kinase; HBUB1; BUB1A; BUB1L; Mitotic Checkpoint Serine/Threonine-Protein Kinase BUB1; Budding Uninhibited By Benzimidazoles 1 (Yeast Homolog); Budding Uninhibited By Benzimidazoles 1 Homolog (Yeast); BUB1 Budding Uninhibited By Benzimidazoles 1 Homolog; Budding Uninhibited By Benzimidazoles 1 Homolog; Putative Serine/Threonine-Protein Kinase; Mitotic Spindle Checkpoint Kinase; EC 2.7.11.1; MCPH30

Background

Gene Name: BUB1

NCBI Gene Entry: [699](#)

UniProt Entry: [O43683](#)

Application Information

Molecular Weight: Predicted, 122 kDa, observed, 130 kDa

Clonality: Rabbit monoclonal antibody

Clone ID: 25GB3065

Species Reactivity: Human

Applications Tested: Western blotting (WB)

Immunogen

A synthesized peptide derived from human Bub1

Isotype

Rabbit IgG

Storage Buffer

Supplied in PBS (pH 7.4) containing 50% glycerol, and 0.02% sodium azide.

Storage

Store at -20 °C for one year.

Recommended Dilutions

Western blotting (WB): 1:1,000-1:5,000

SUPPORT

SUPPORT@GENUINBIOTECH.COM
TEL: +1-540-855-7041

ORDERS

SALES@GENUINBIOTECH.COM
FAX: +1-540-855-7041

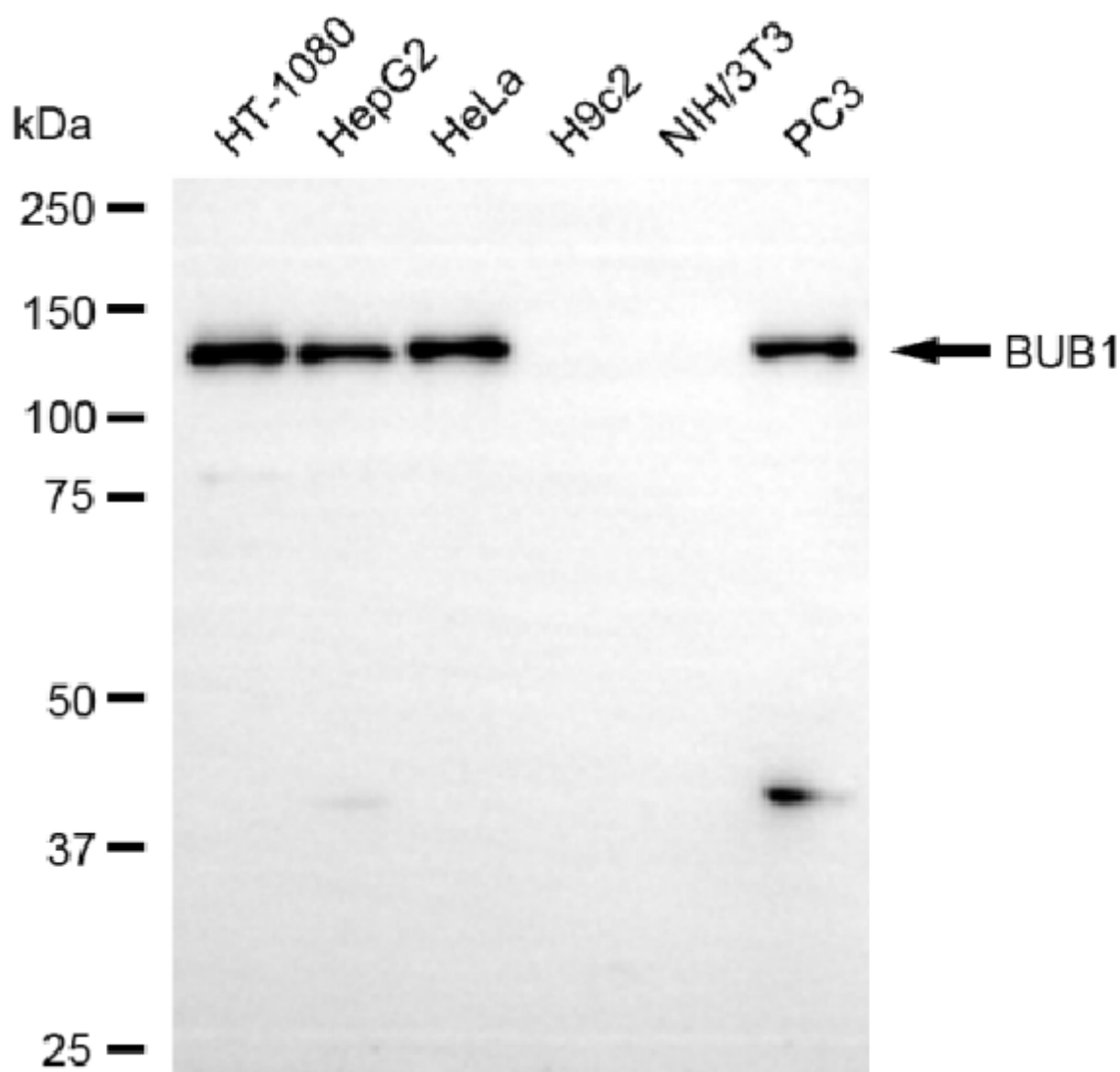
WWW.GENUINBIOTECH.COM

KD-Validated Anti-BUB1 Recombinant Rabbit Monoclonal Antibody

PAGE 2

Note: This product is for research use only.

Validation Data



Copyright ©2025 Genuin Biotechnologies LLC

Western blotting analysis using anti-BUB1 antibody (Cat#61624). Total cell lysates (30 µg) from various cell lines were loaded and separated by SDS-PAGE. The blot was incubated with anti-BUB1 antibody (Cat#61624, 1:5,000) and HRP-conjugated goat anti rabbit secondary antibody (Cat#201, 1:20,000) respectively. Image was developed using NaQ™ ECL Substrate Kit (Cat#716).

SUPPORT

SUPPORT@GENUINBIOTECH.COM
TEL: +1-540-855-7041

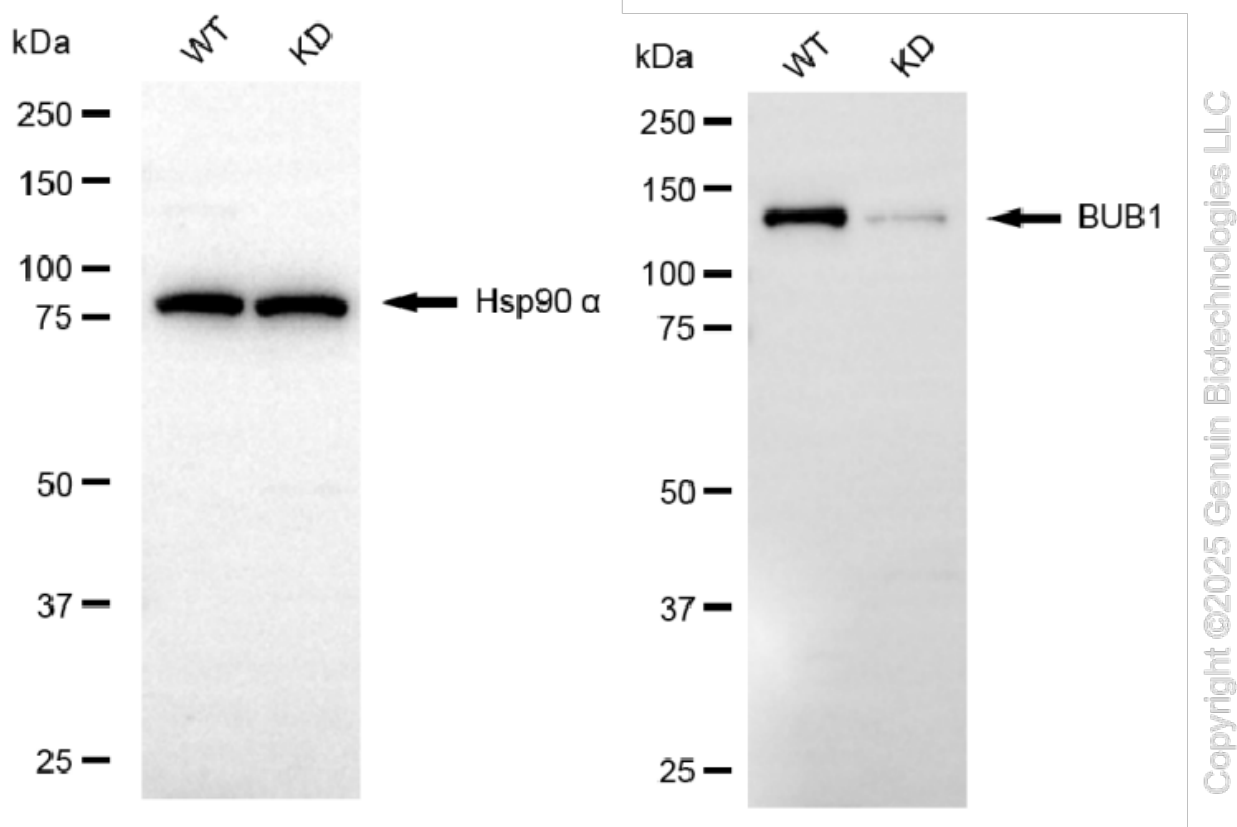
ORDERS

SALES@GENUINBIOTECH.COM
FAX: +1-540-855-7041

WWW.GENUINBIOTECH.COM

KD-Validated Anti-BUB1 Recombinant Rabbit Monoclonal Antibody

PAGE 3



Western blotting analysis using anti-BUB1 antibody (Cat#61624). BUB1 expression in wild type (WT) and BUB1 knockdown (KD) HSHC cells with 20 μ g of total cell lysates. Hsp90 α serves as a loading control. The blot was incubated with anti-BUB1 antibody (Cat#61624, 1:5,000) and HRP-conjugated goat anti-rabbit secondary antibody (Cat#201, 1:20,000) respectively. Image was developed using NaQ™ ECL Substrate Kit (Cat#716).

SUPPORT

SUPPORT@GENUINBIOTECH.COM
TEL: +1-540-855-7041

ORDERS

SALES@GENUINBIOTECH.COM
FAX: +1-540-855-7041

WWW.GENUINBIOTECH.COM