

KD-Validated Anti-Cullin 2 Recombinant Rabbit Monoclonal Antibody



Catalog #: 61625

Aliases

CUL2; Cullin 2; Cullin-2; CUL-2; Testis Secretory Sperm-Binding Protein Li 238E

Background

Gene Name: CUL2

NCBI Gene Entry: [8453](#)

UniProt Entry: [Q13617](#)

Application Information

Molecular Weight: Predicted, 87 kDa; observed, 82,84 kDa

Clonality: Rabbit monoclonal antibody

Clone ID: 25GB3070

Species Reactivity: Human, mouse, rat

Applications Tested: Western blotting (WB), flow cytometry (FCM)

Immunogen

A synthesized peptide derived from human Cullin 2

Isotype

Rabbit IgG

Storage Buffer

Supplied in PBS (pH 7.4) containing 50% glycerol, and 0.02% sodium azide.

Storage

Store at -20 °C for one year.

Recommended Dilutions

Western blotting (WB): 1:1,000-1:5,000

Flow Cytometry (FCM): 1:2,000

Note: This product is for research use only.

Validation Data

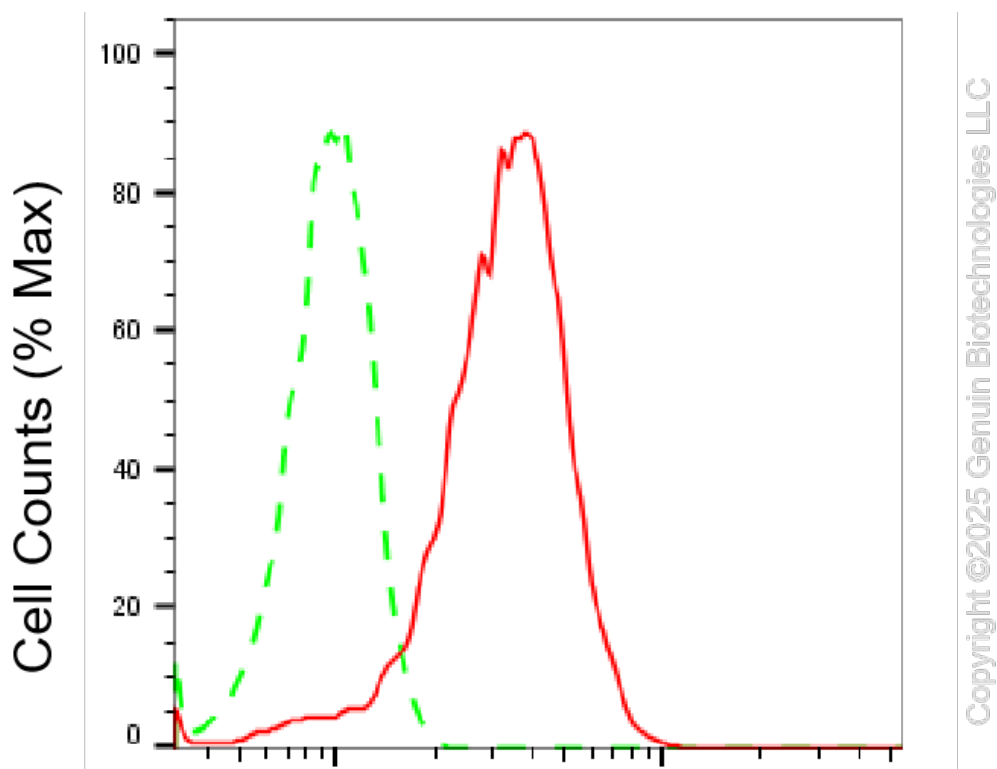
SUPPORT

SUPPORT@GENUINBIOTECH.COM
TEL: +1-540-855-7041

ORDERS

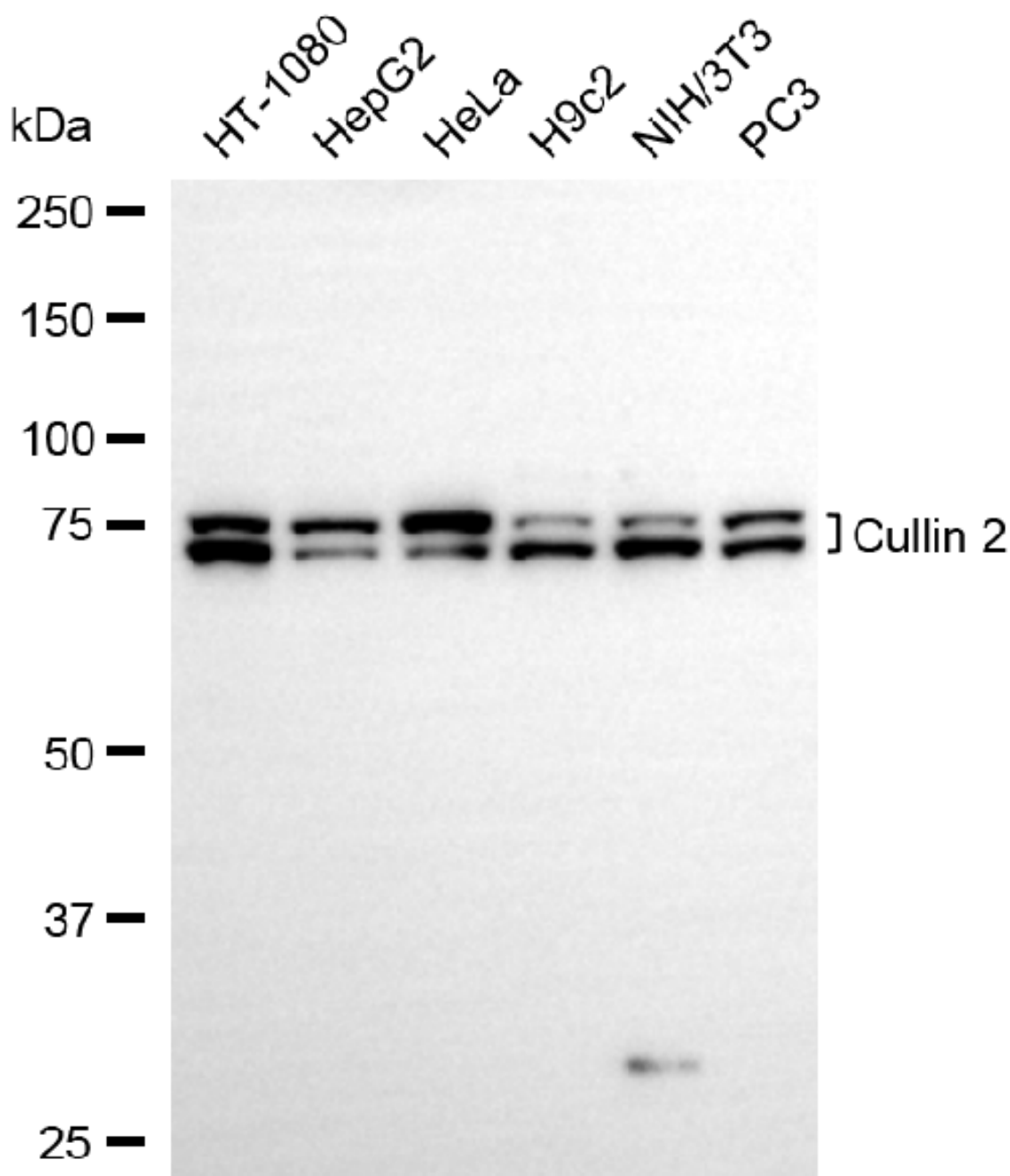
SALES@GENUINBIOTECH.COM
FAX: +1-540-855-7041

WWW.GENUINBIOTECH.COM



Cullin 2-Alexa Fluor® 647

Flow cytometric analysis of Cullin 2 expression in HepG2 cells using anti-Cullin 2 antibody (Cat#61625, 1:2,000). Green, isotype control; red, Cullin 2.

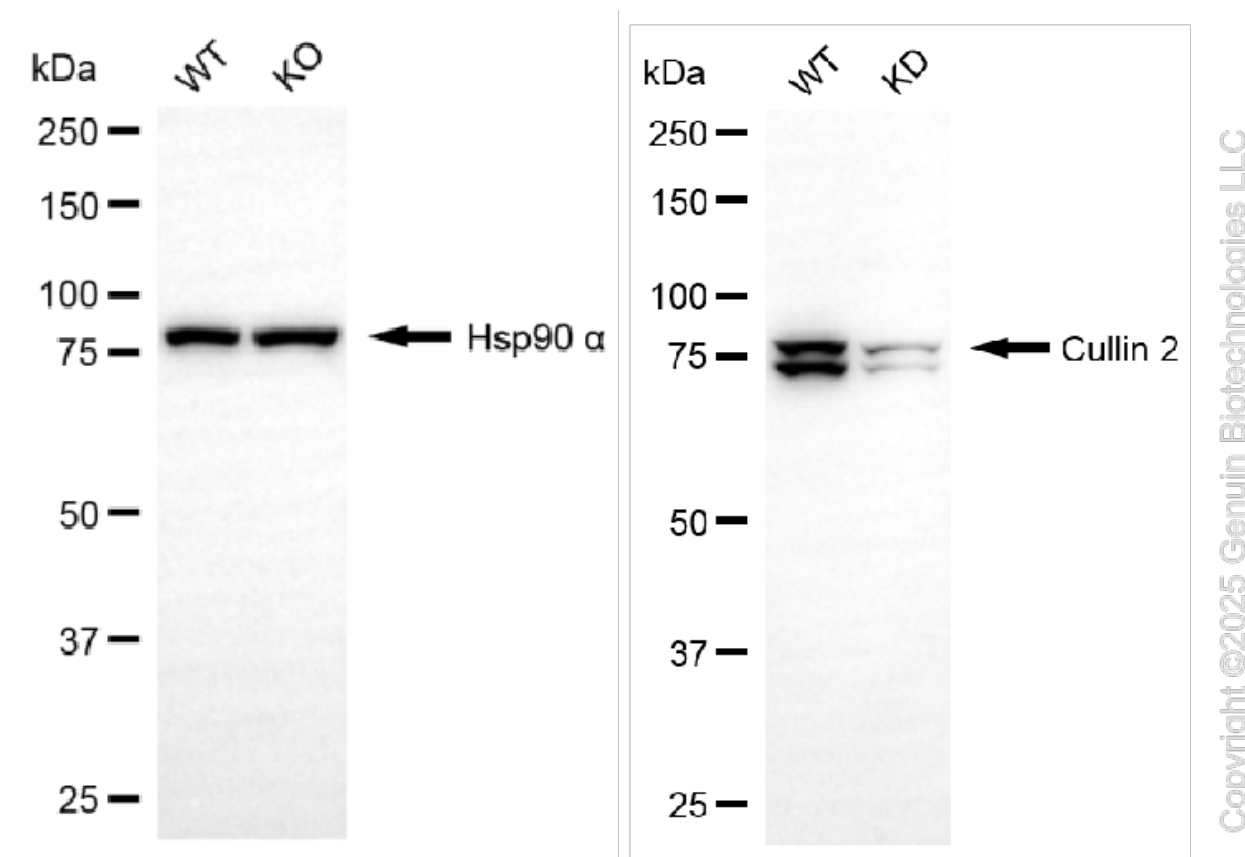


Copyright ©2025 Genuin Biotechnologies LLC

Western blotting analysis using anti-cullin 2 antibody (Cat#61625). Total cell lysates (15 µg) from various cell lines were loaded and separated by SDS-PAGE. The blot was incubated with anti-cullin 2 antibody (Cat#61625, 1:5,000) and HRP-conjugated goat anti-rabbit secondary antibody (Cat#201, 1:20,000) respectively. Image was developed using NaQ™ ECL Substrate Kit (Cat#716).

KD-Validated Anti-Cullin 2 Recombinant Rabbit Monoclonal Antibody

PAGE 4



Western blotting analysis using anti-cullin 2 antibody (Cat#61625). Cullin 2 expression in wild-type (WT) and cullin 2 (CUL2) knockdown (KD) HeLa cells with 20 μ g of total cell lysates. Hsp90 α serves as a loading control. The blot was incubated with anti-cullin 2 antibody (Cat#61625, 1:5,000) and HRP-conjugated goat anti-rabbit secondary antibody (Cat#201, 1:20,000) respectively. Image was developed using FeQ™ ECL Substrate Kit (Cat#226).

SUPPORT

SUPPORT@GENUINBIOTECH.COM
TEL: +1-540-855-7041

ORDERS

SALES@GENUINBIOTECH.COM
FAX: +1-540-855-7041

WWW.GENUINBIOTECH.COM