

# KD-Validated Anti-LIM Homeobox 3 Recombinant Rabbit Monoclonal Antibody



**Catalog #: 61626**

## Aliases

LHX3; LIM Homeobox 3; LIM/Homeobox Protein Lhx3; LIM Homeobox Protein 3; LIM/ Homeodomain Protein LHX3; M2-LHX3; CPHD3; LIM3

## Background

Gene Name: LHX3

NCBI Gene Entry: [8022](#)

UniProt Entry: [Q9UBR4](#)

## Application Information

Molecular Weight: Predicted, 43 kDa, observed, 43 kDa

Clonality: Rabbit monoclonal antibody

Clone ID: 25GB3075

Species Reactivity: Human, mouse, rat

Applications Tested: Western blotting (WB), flow cytometry (FCM), immunocytochemistry (IC)

## Immunogen

A synthesized peptide derived from human LHX3

## Isotype

Rabbit IgG

## Storage Buffer

Supplied in PBS (pH 7.4) containing 50% glycerol, and 0.02% sodium azide.

## Storage

Store at -20 °C for one year.

## Recommended Dilutions

Western blotting (WB): 1:1,000-1:5,000

Flow Cytometry (FCM): 1:2,000

Immunocytochemistry (IC): 1:100-1:1,000

**Note:** This product is for research use only.

## Validation Data

---

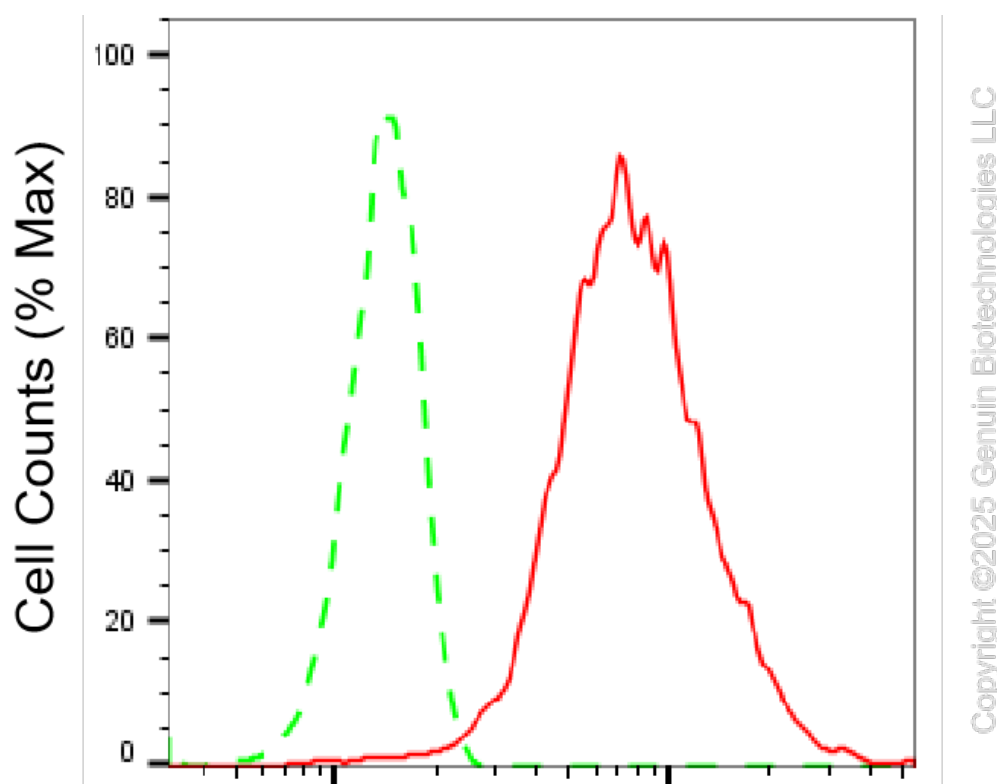
### SUPPORT

SUPPORT@GENUINBIOTECH.COM  
TEL: +1-540-855-7041

### ORDERS

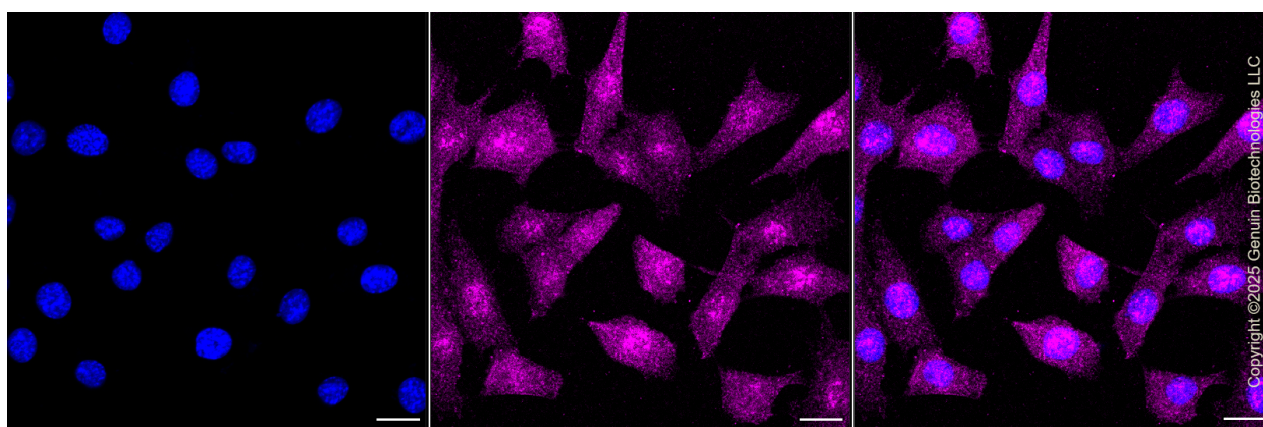
SALES@GENUINBIOTECH.COM  
FAX: +1-540-855-7041

[WWW.GENUINBIOTECH.COM](http://WWW.GENUINBIOTECH.COM)



### LIM homeobox 3-Alexa Fluor® 647

Flow cytometric analysis of LIM homeobox 3 expression in C2C12 cells using anti-LIM homeobox 3 antibody (Cat#61626, 1:2,000). Green, isotype control; red, LIM homeobox 3.



Immunocytochemical staining of C2C12 cells with anti-LIM homeobox 3 antibody (Cat#61626, 1:1,000). Nuclei were stained blue with DAPI; LIM homeobox 3 was stained magenta with Alexa Fluor® 647. Images were taken using Leica stellaris 5. Protein abundance based on laser Intensity and smart gain: Medium. Scale bar, 20 µm.

#### SUPPORT

SUPPORT@GENUINBIOTECH.COM  
TEL: +1-540-855-7041

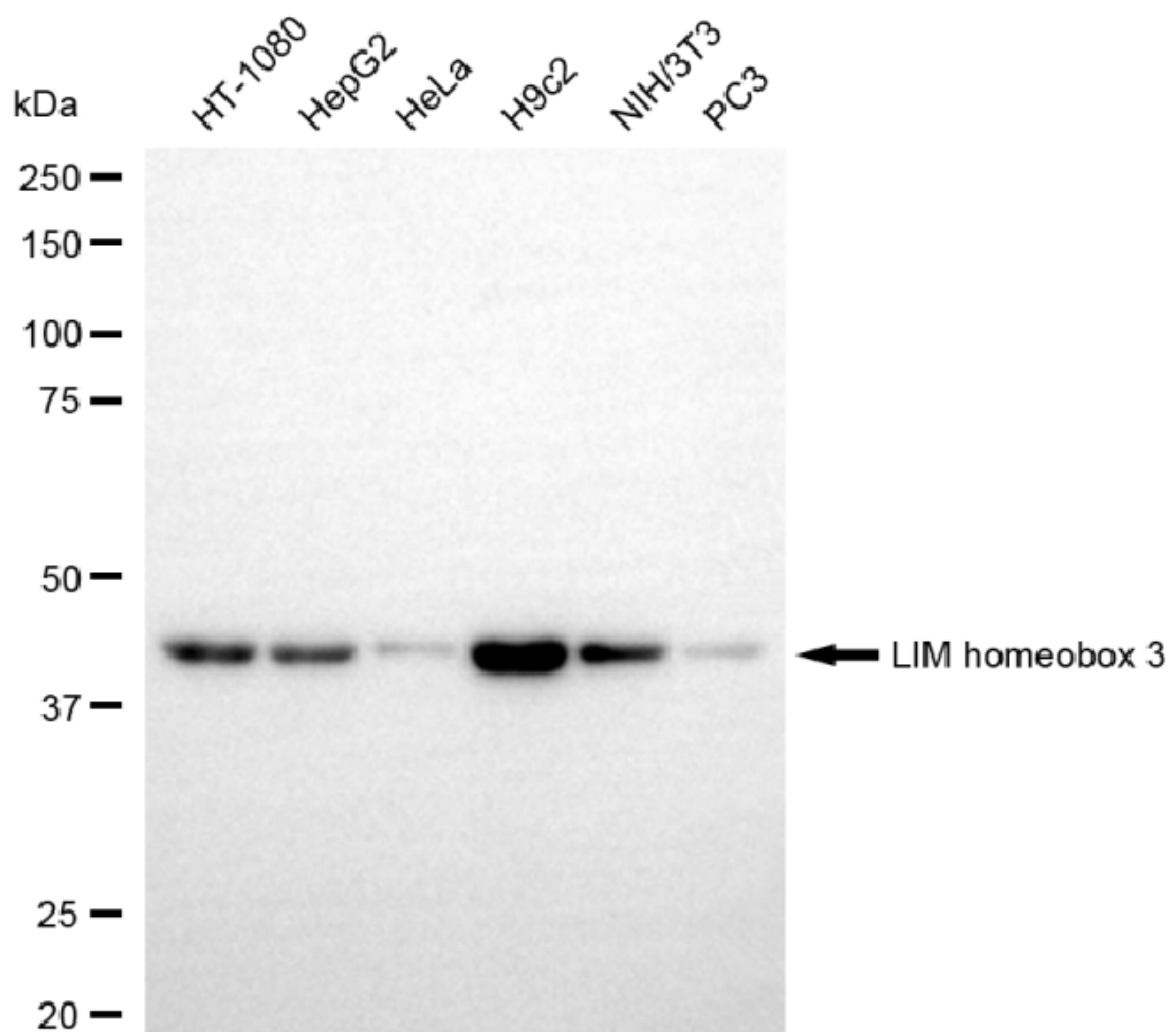
#### ORDERS

SALES@GENUINBIOTECH.COM  
FAX: +1-540-855-7041

[WWW.GENUINBIOTECH.COM](http://WWW.GENUINBIOTECH.COM)

## KD-Validated Anti-LIM Homeobox 3 Recombinant Rabbit Monoclonal Antibody

PAGE 3



Copyright ©2025 Genuin Biotechnologies LLC

Western blotting analysis using anti-LIM homeobox 3 antibody (Cat#61626). Total cell lysates (30 µg) from various cell lines were loaded and separated by SDS-PAGE. The blot was incubated with anti-LIM homeobox 3 antibody (Cat#61626, 1:5,000) and HRP-conjugated goat anti-rabbit secondary antibody (Cat#201, 1:20,000) respectively. Image was developed using NaQ™ ECL Substrate Kit (Cat#716).

### SUPPORT

SUPPORT@GENUINBIOTECH.COM  
TEL: +1-540-855-7041

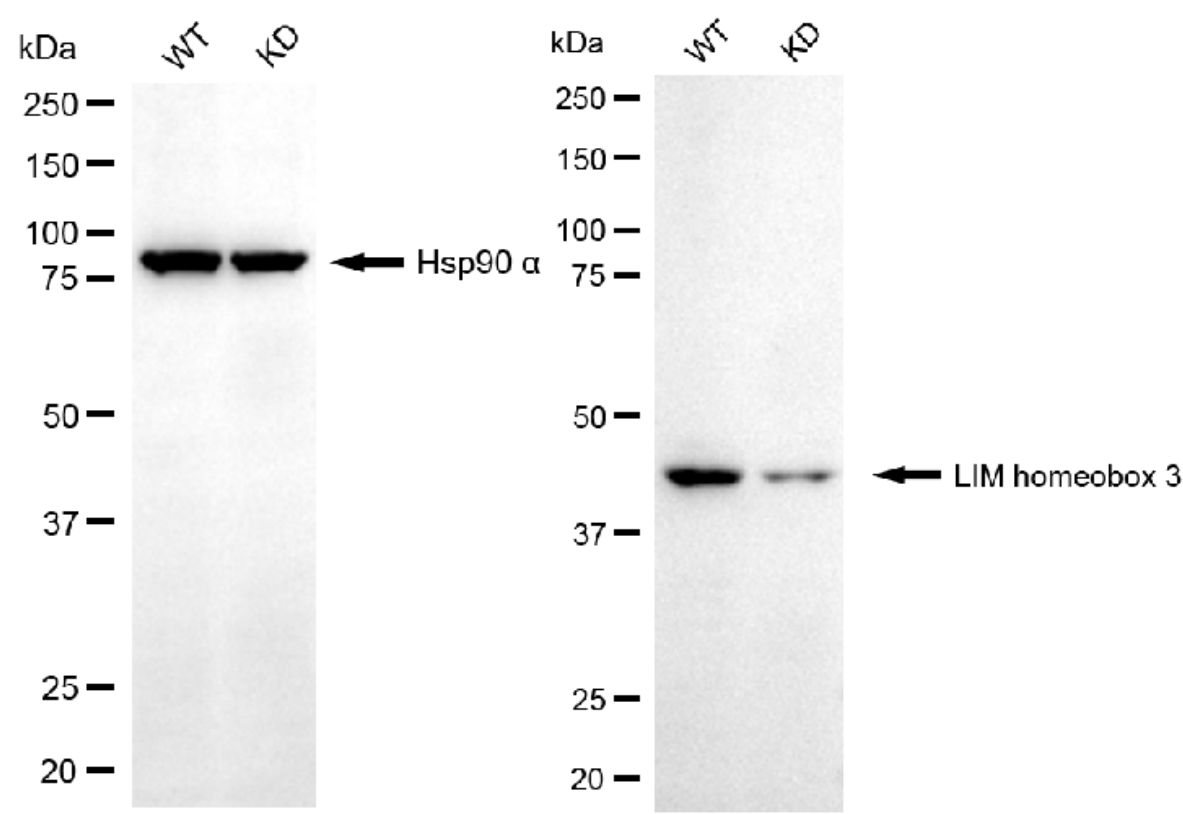
### ORDERS

SALES@GENUINBIOTECH.COM  
FAX: +1-540-855-7041

WWW.GENUINBIOTECH.COM

## KD-Validated Anti-LIM Homeobox 3 Recombinant Rabbit Monoclonal Antibody

PAGE 4



Copyright ©2025 Genuin Biotechnologies LLC

Western blotting analysis using anti-LIM homeobox 3 antibody (Cat#61626). LIM homeobox 3 expression in wild-type (WT) and LIM homeobox 3 (LHX3) knockdown (KD) HSHC cells with 30 µg of total cell lysates. Hsp90 α serves as a loading control. The blot was incubated with anti-LIM homeobox 3 antibody (Cat#61626, 1:5,000) and HRP-conjugated goat anti-rabbit secondary antibody (Cat#201, 1:20,000) respectively. Image was developed using FeQ™ ECL Substrate Kit (Cat#226).

### SUPPORT

SUPPORT@GENUINBIOTECH.COM  
TEL: +1-540-855-7041

### ORDERS

SALES@GENUINBIOTECH.COM  
FAX: +1-540-855-7041

WWW.GENUINBIOTECH.COM