

# KD-Validated Anti-EIF4A1 Recombinant Rabbit Monoclonal Antibody



**Catalog #: 61628**

## Aliases

EIF4A1; Eukaryotic Translation Initiation Factor 4A1; DDX2A; EIF-4A; EIF4A; ATP-Dependent RNA Helicase EIF4A-1; Eukaryotic Initiation Factor 4A-I; EIF-4A-I; EIF4A-I; Eukaryotic Translation Initiation Factor 4A, Isoform 1; Eukaryotic Translation Initiation Factor 4A; Eukaryotic Initiation Factor 4A; EC 3.6.4.13; EC 3.6.1

## Background

Gene Name: EIF4A1

NCBI Gene Entry: [1973](#)

UniProt Entry: [P60842](#)

## Application Information

Molecular Weight: Predicted, 46 kDa, observed, 46 kDa

Clonality: Rabbit monoclonal antibody

Clone ID: 23GB3835

Species Reactivity: Human, mouse, rat

Applications Tested: Western blotting (WB), flow cytometry (FCM), immunocytochemistry (IC)

## Immunogen

A synthesized peptide derived from human eIF4A1

## Isotype

Rabbit IgG

## Storage Buffer

Supplied in PBS (pH 7.4) containing 50% glycerol, and 0.02% sodium azide.

## Storage

Store at -20 °C for one year.

## Recommended Dilutions

Western Blotting (WB): 1:1,000-1:5,000

Flow Cytometry (FCM): 1:2,000

Immunocytochemistry (IC): 1:100-1:1,000

---

### SUPPORT

SUPPORT@GENUINBIOTECH.COM  
TEL: +1-540-855-7041

### ORDERS

SALES@GENUINBIOTECH.COM  
FAX: +1-540-855-7041

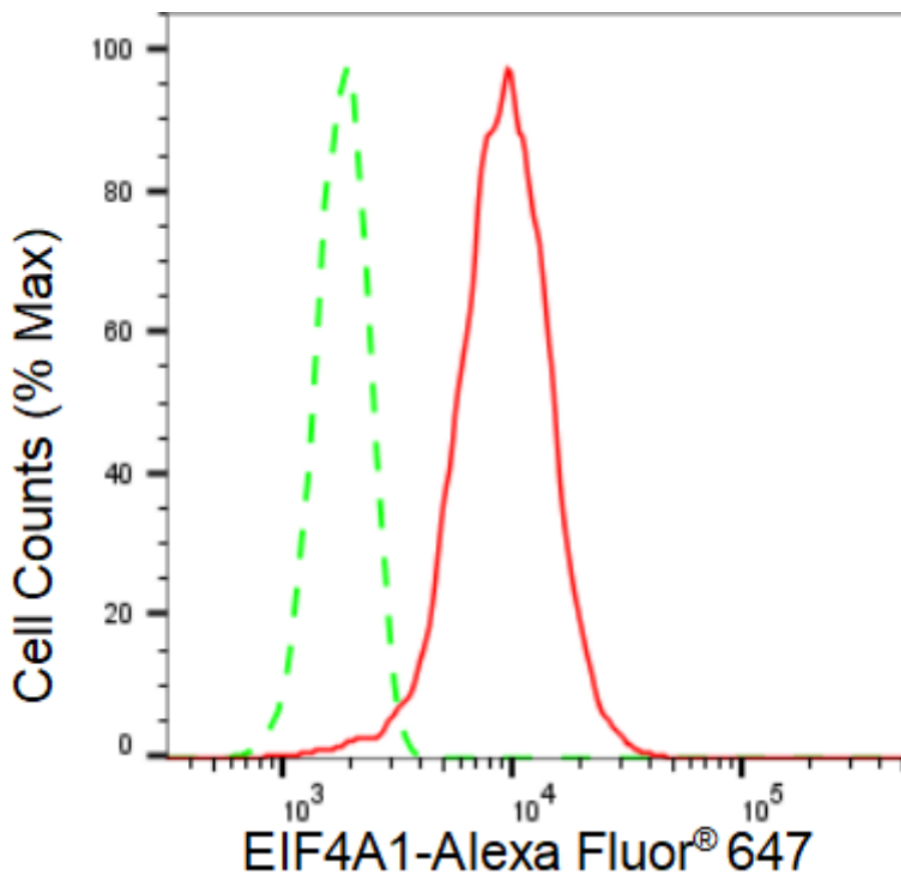
[WWW.GENUINBIOTECH.COM](http://WWW.GENUINBIOTECH.COM)

## KD-Validated Anti-EIF4A1 Recombinant Rabbit Monoclonal Antibody

PAGE 2

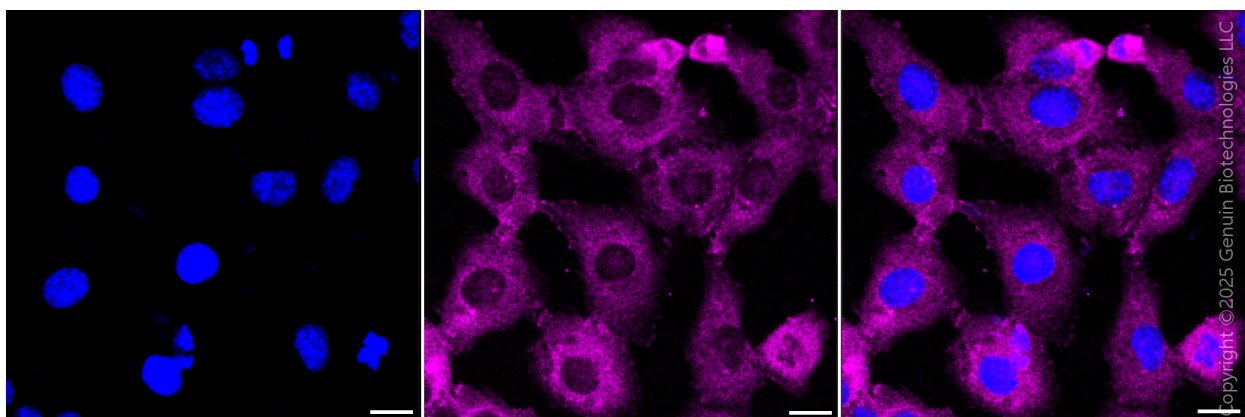
**Note:** This product is for research use only.

### Validation Data



Copyright ©2024 Genuin Biotechnologies LLC

Flow cytometric analysis of EIF4A1 expression in HT-1080 cells using EIF4A1 antibody (Cat#61628, 1:2,000). Green, isotype control; red, EIF4A1.



Copyright ©2025 Genuin Biotechnologies LLC

Immunocytochemical staining of HT-1080 cells with anti-EIF4A1 antibody (Cat #61628, 1:1,000). Nuclei were stained blue with DAPI; EIF4A1 was stained magenta with Alexa Fluor® 647. Images were taken using Leica stellaris 5. Protein abundance based on laser Intensity and smart gain: Medium. Scale bar, 20  $\mu$ m.

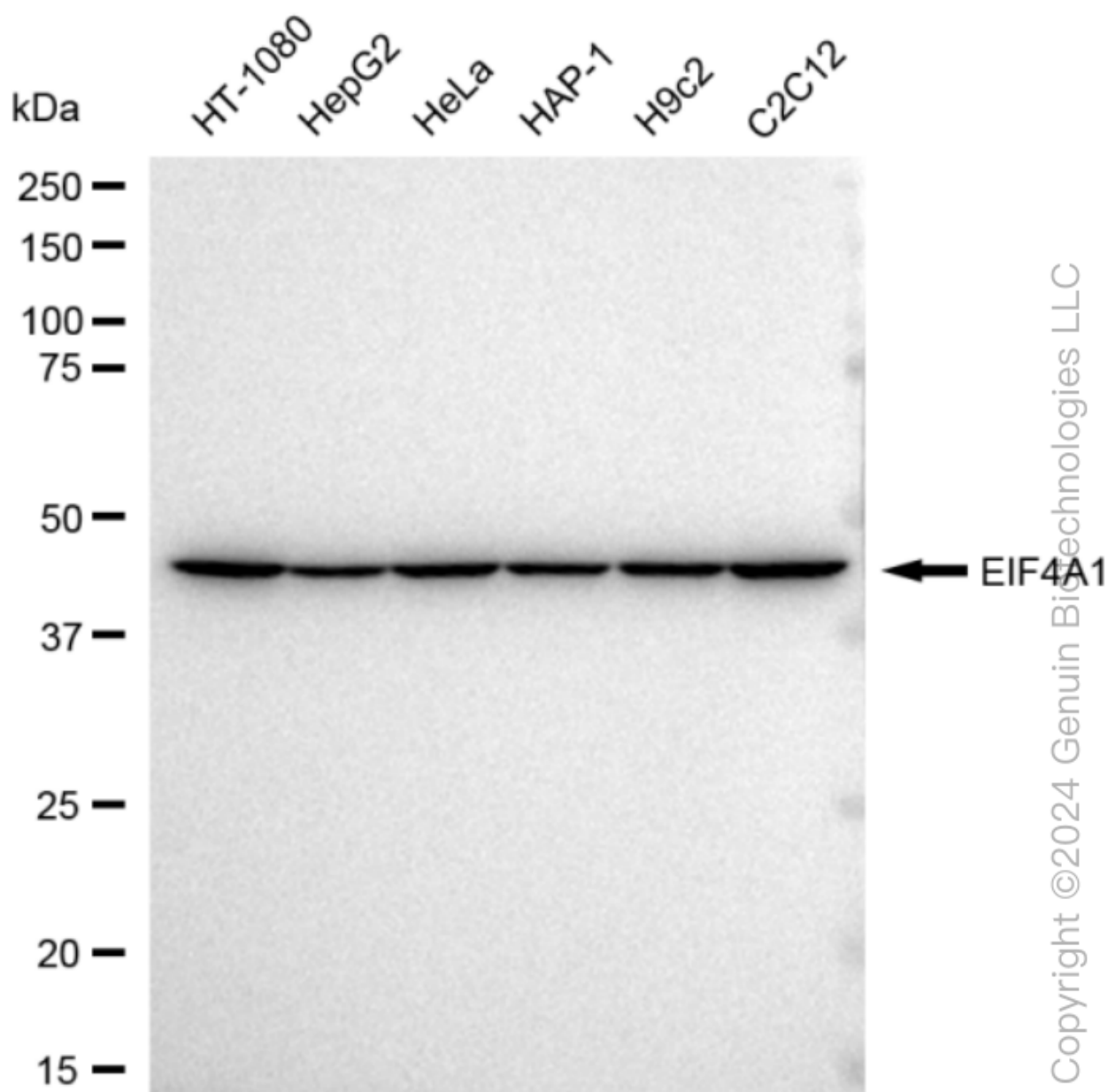
#### SUPPORT

SUPPORT@GENUINBIOTECH.COM  
TEL: +1-540-855-7041

#### ORDERS

SALES@GENUINBIOTECH.COM  
FAX: +1-540-855-7041

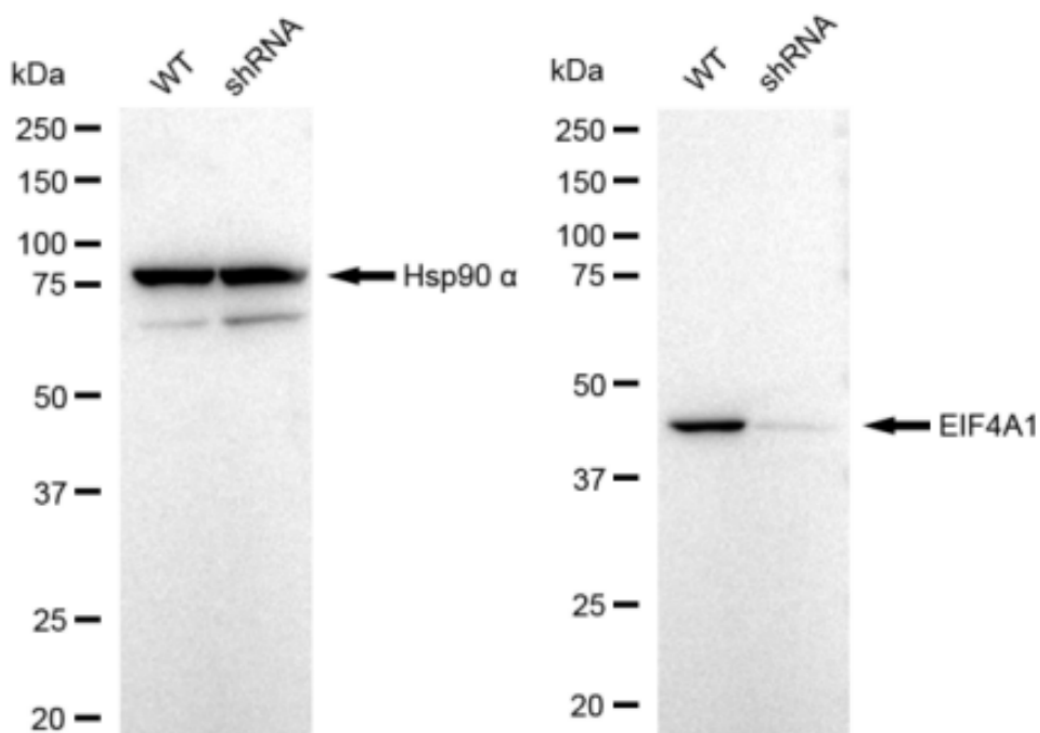
WWW.GENUINBIOTECH.COM



Western blotting analysis using anti-EIF4A1 antibody (Cat#61628). Total cell lysates (30  $\mu$ g) from various cell lines were loaded and separated by SDS-PAGE. The blot was incubated with anti-EIF4A1 antibody (Cat#61628, 1:5,000) and HRP-conjugated goat anti-rabbit secondary antibody (Cat#201, 1:20,000) respectively. Image was developed using FeQ™ ECL Substrate Kit (Cat#226).

## KD-Validated Anti-EIF4A1 Recombinant Rabbit Monoclonal Antibody

PAGE 4



Copyright ©2024 Genuin Biotechnologies LLC

Western blotting analysis using anti-EIF4A1 antibody (Cat#61628). EIF4A1 expression in wild type (WT) and EIF4A1 shRNA knockdown (KD) HeLa cells with 30 µg of total cell lysates. Hsp90 α serves as a loading control. The blot was incubated with anti-EIF4A1 antibody (Cat#61628, 1:5,000) and HRP-conjugated goat anti-rabbit secondary antibody (Cat#201, 1:20,000) respectively. Image was developed using FeQ™ ECL Substrate Kit (Cat#226).

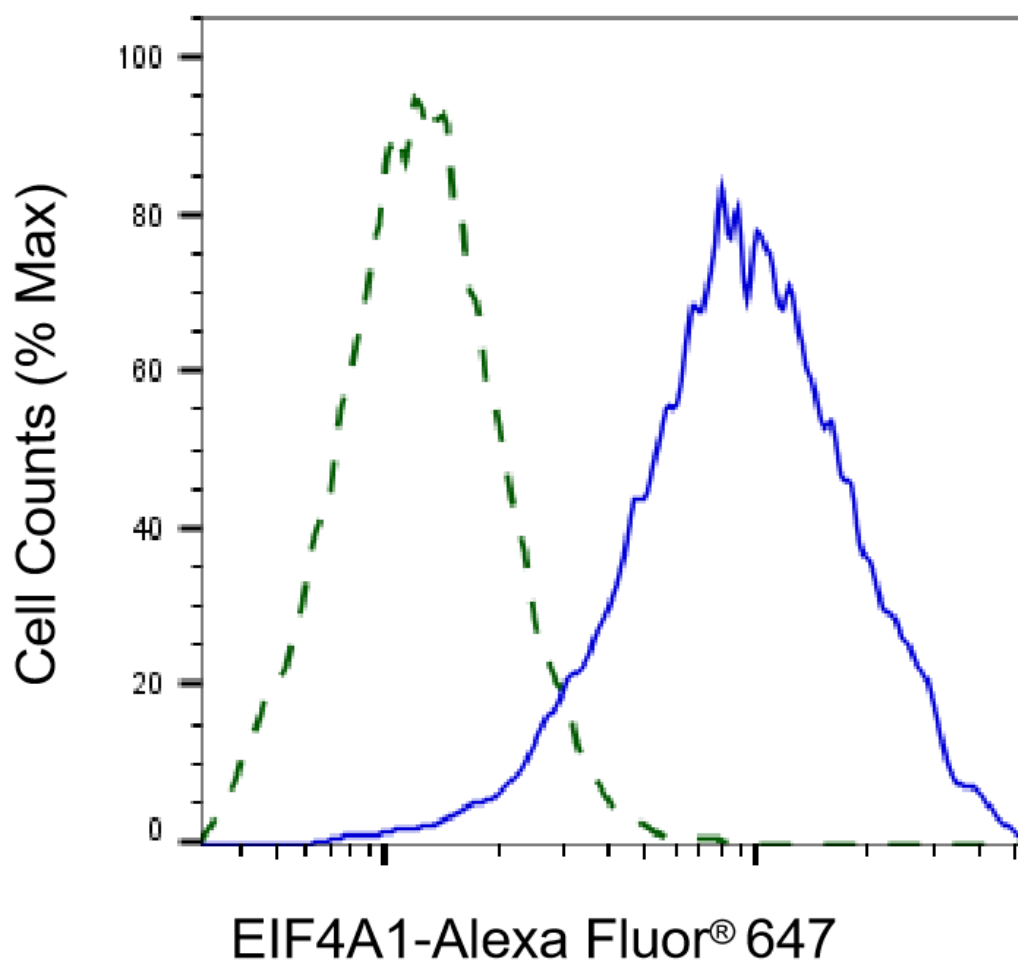
### SUPPORT

SUPPORT@GENUINBIOTECH.COM  
TEL: +1-540-855-7041

### ORDERS

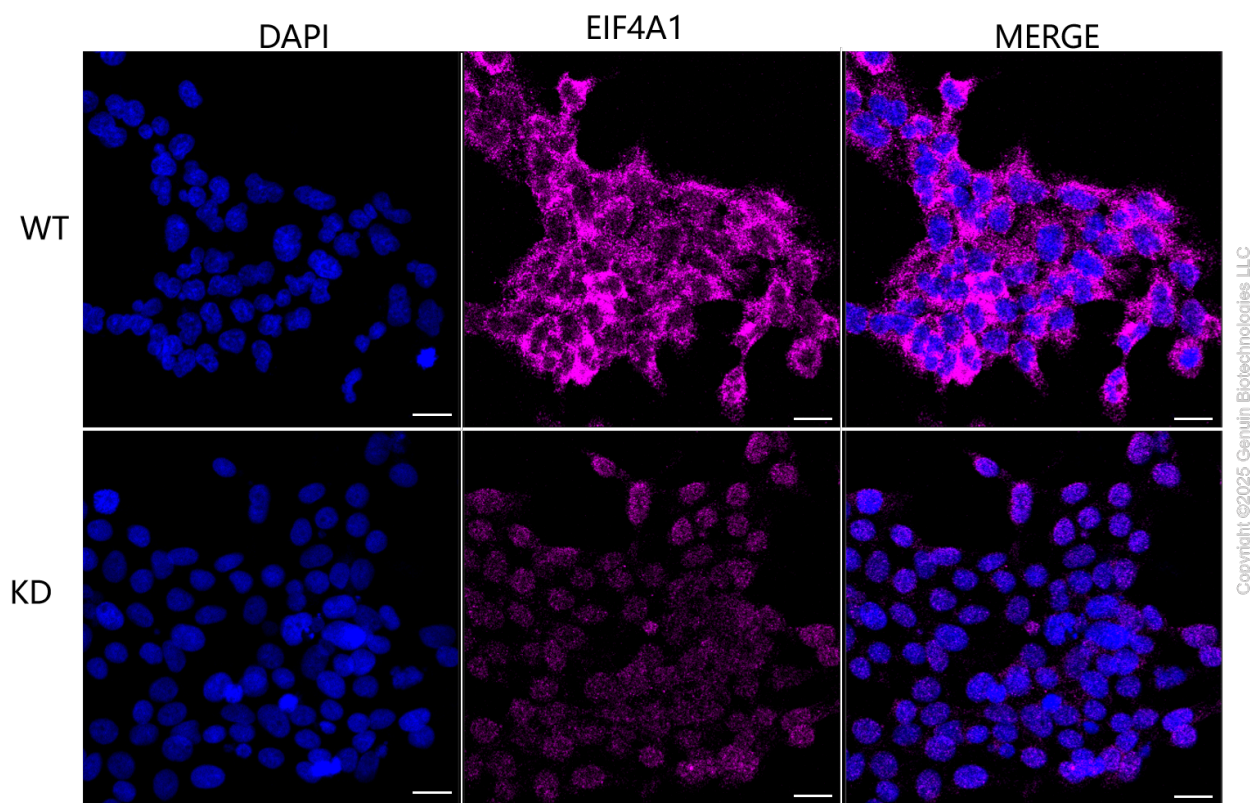
SALES@GENUINBIOTECH.COM  
FAX: +1-540-855-7041

[WWW.GENUINBIOTECH.COM](http://WWW.GENUINBIOTECH.COM)



Copyright ©2025 Genuin Biotechnologies LLC

Validation of EIF4A1 knockdown using flow cytometry. Wild-type(WT, Blue) and knockdown(KD, Green) HeLa cells were stained with anti-EIF4A1 antibody (Cat#61628, 1:2,000) and analyzed using BD flow cytometer.



Immunocytochemical staining of HeLa cells using anti-EIF4A1 antibody (Cat#61628, 1:1,000), Top panel: wild-type (WT); Bottom panel: EIF4A1 shRNA knockdown (KD). Nuclei were stained blue with DAPI; EIF4A1 was stained magenta with Alexa Fluor® 647. Scale bar, 20  $\mu$ m.