

KD-Validated Anti-Phospho-eIF4EBP1/2/3 (T46+T46+T32) Recombinant Rabbit



Catalog #: 61630

Aliases

EIF4EBP1/2/3; Eukaryotic Translation Initiation Factor 4E Binding Protein 1/2/3; PHAS-I; 4E-BP1/2/3; Phosphorylated Heat- And Acid-Stable Protein Regulated By Insulin 1/2/3; Eukaryotic Translation Initiation Factor 4E-Binding Protein 1/2/3; EIF4E-Binding Protein 1/2/3; 4EBP1/2/3; BP-1/2/3

Background

Gene Name: EIF4EBP1/2/3

NCBI Gene Entry: [1978/1979/8637](#)

UniProt Entry: [Q13541/Q13542/O60516](#)

Application Information

Molecular Weight: Predicted, 13 kDa, observed, 21 kDa

Clonality: Rabbit monoclonal antibody

Clone ID: 23GB3850

Species Reactivity: Human, mouse, rat

Applications Tested: Western blotting (WB), flow cytometry (FCM), immunocytochemistry (IC)

Immunogen

A synthesized peptide derived from human Phospho-eIF4EBP1/2/3 (T46+T46+T32)

Isotype

Rabbit IgG

Storage Buffer

Supplied in PBS (pH 7.4) containing 50% glycerol, and 0.02% sodium azide.

Storage

Store at -20 °C for one year.

Recommended Dilutions

Western Blotting (WB): 1:1,000-1:5,000

Flow Cytometry (FCM): 1:2,000

Immunocytochemistry (IC): 1:100-1:1,000

SUPPORT

SUPPORT@GENUINBIOTECH.COM
TEL: +1-540-855-7041

ORDERS

SALES@GENUINBIOTECH.COM
FAX: +1-540-855-7041

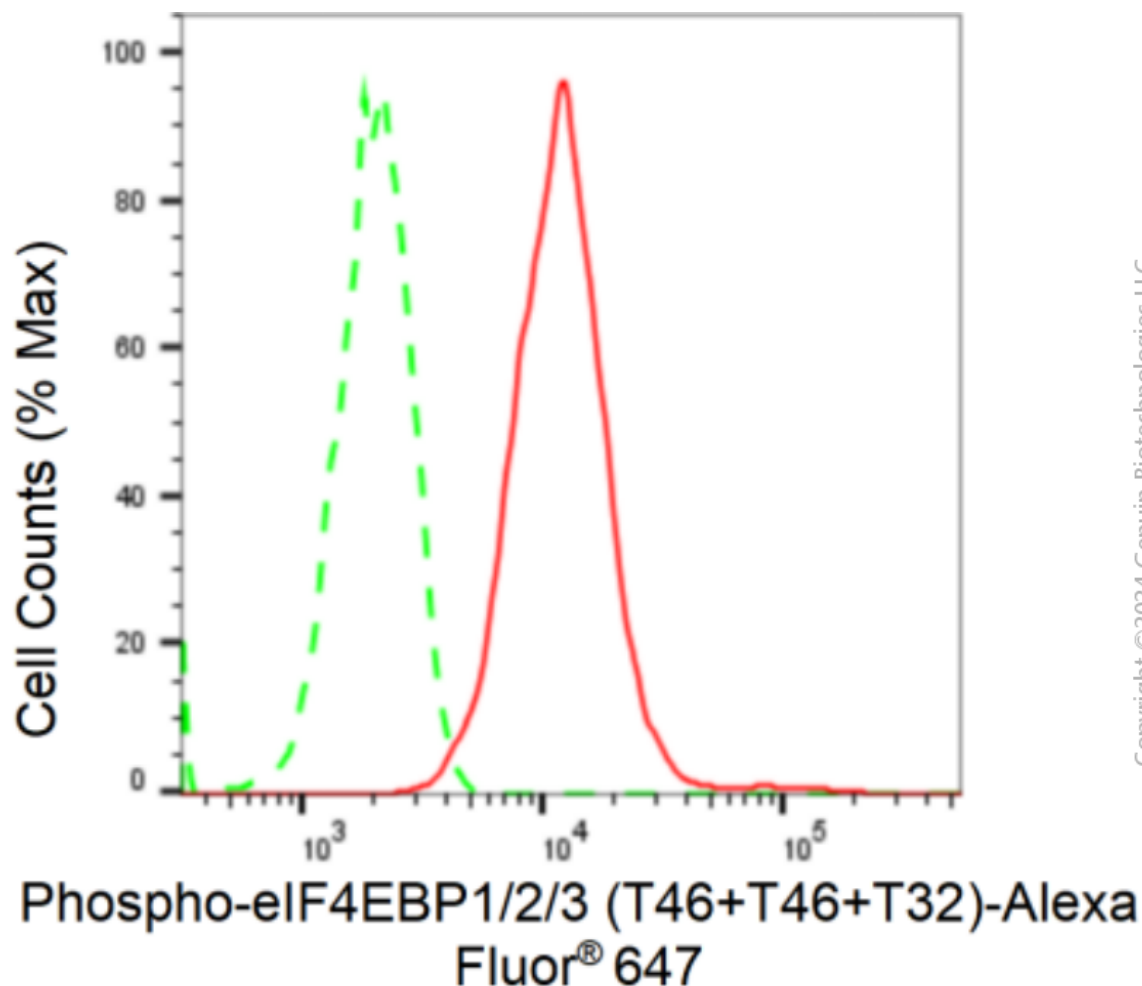
WWW.GENUINBIOTECH.COM

KD-Validated Anti-Phospho-eIF4EBP1/2/3 (T46+T46+T32) Recombinant Rabbit

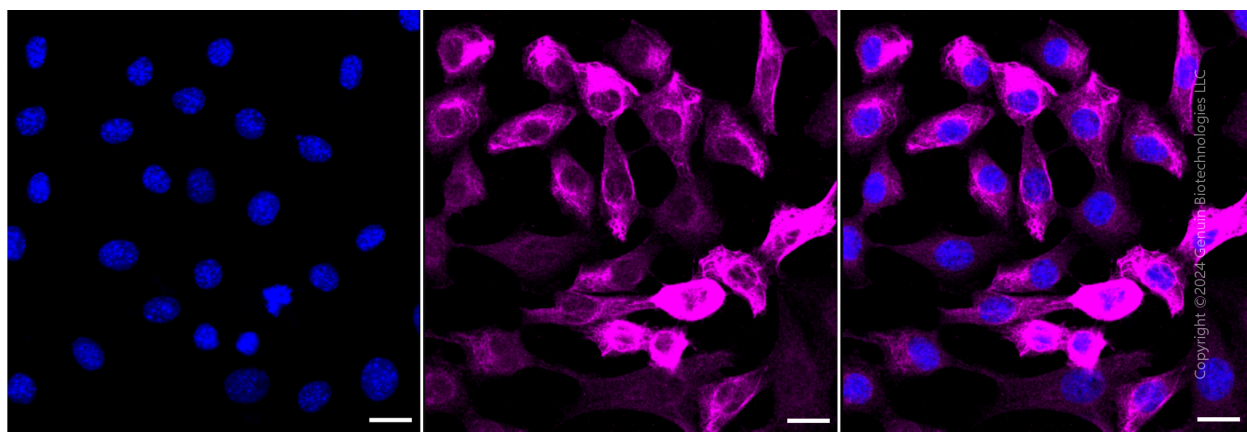
PAGE 2

Note: This product is for research use only.

Validation Data



Flow cytometric analysis of Phospho-eIF4EBP1/2/3 (T46+T46+T32) expression in C2C12 cells using Phospho-eIF4EBP1/2/3 (T46+T46+T32) antibody (Cat#61630, 1:2,000). Green, isotype control; red, Phospho-eIF4EBP1/2/3 (T46+T46+T32).



SUPPORT

SUPPORT@GENUINBIOTECH.COM
TEL: +1-540-855-7041

ORDERS

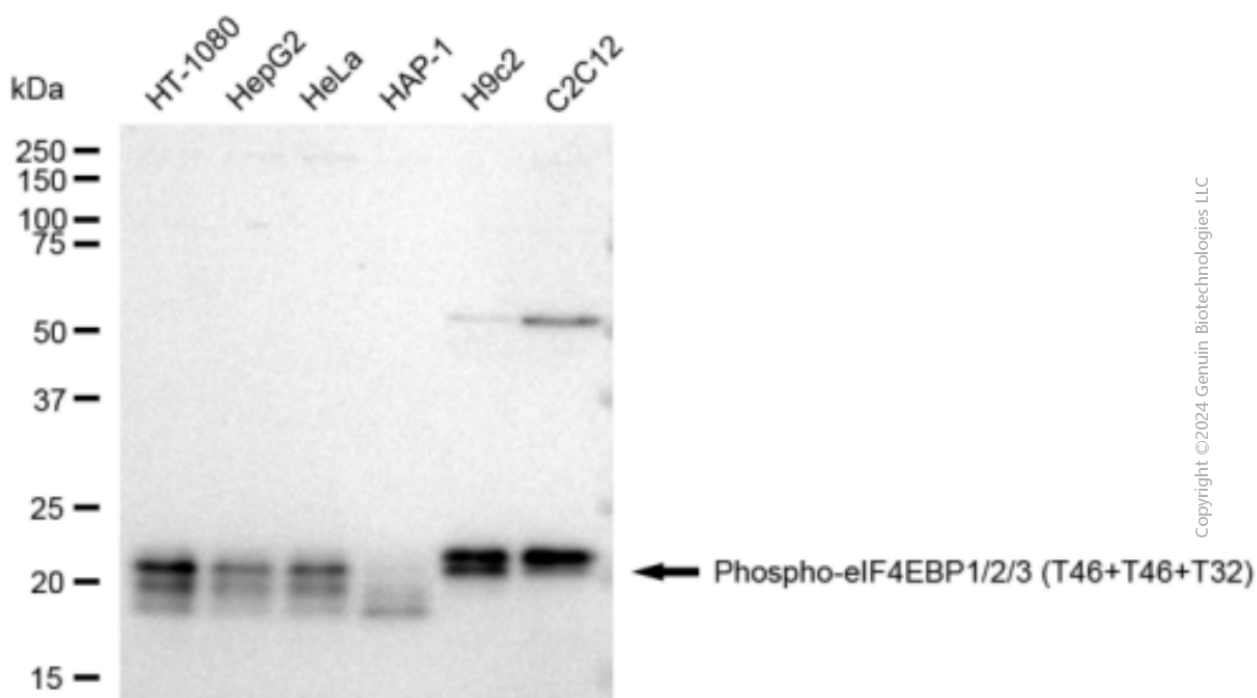
SALES@GENUINBIOTECH.COM
FAX: +1-540-855-7041

WWW.GENUINBIOTECH.COM

KD-Validated Anti-Phospho-eIF4EBP1/2/3 (T46+T46+T32) Recombinant Rabbit

PAGE 3

Immunocytochemical staining of C2C12 cells with Phospho-eIF4EBP1/2/3 (T46+T46+T32) antibody (Cat#61630, 1:1,000). Nuclei were stained blue with DAPI; Phospho-eIF4EBP1/2/3 (T46+T46+T32) was stained magenta with Alexa Fluor® 647. Images were taken using Leica stellaris 5. Protein abundance based on laser Intensity and smart gain: High. Scale bar: 20 μ m.



Western blotting analysis using anti-Phospho-eIF4EBP1/2/3 (T46+T46+T32) antibody (Cat#61630). Total cell lysates (30 μ g) from various cell lines were loaded and separated by SDS-PAGE. The blot was incubated with anti-Phospho-eIF4EBP1/2/3 (T46+T46+T32) antibody (Cat#61630, 1:5,000) and HRP-conjugated goat anti-rabbit secondary antibody (Cat#201, 1:20,000) respectively. Image was developed using FeQ™ ECL Substrate Kit (Cat#226).

SUPPORT

SUPPORT@GENUINBIOTECH.COM
TEL: +1-540-855-7041

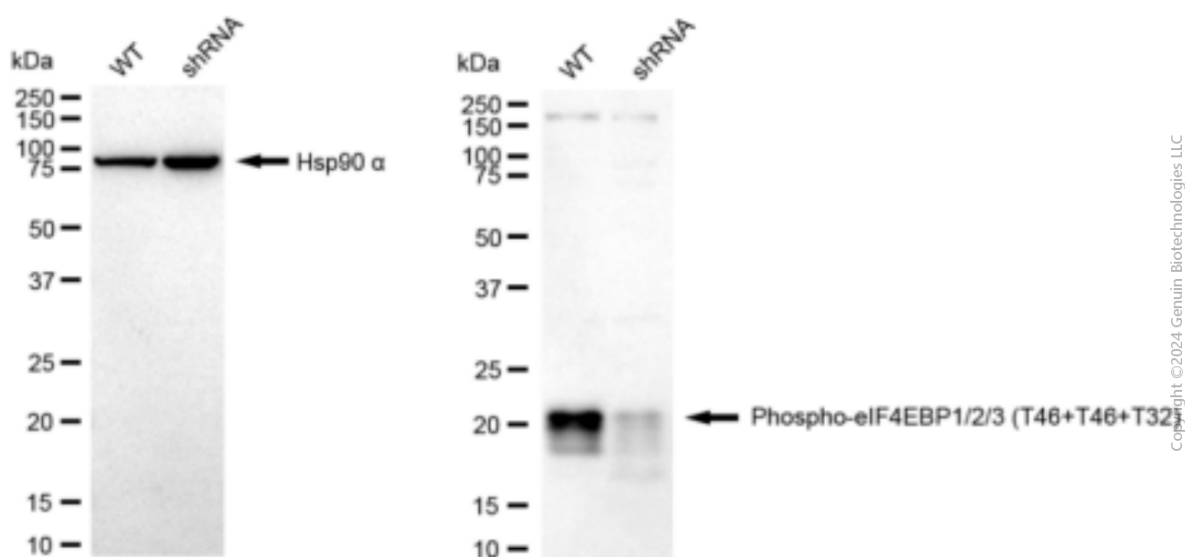
ORDERS

SALES@GENUINBIOTECH.COM
FAX: +1-540-855-7041

WWW.GENUINBIOTECH.COM

KD-Validated Anti-Phospho-eIF4EBP1/2/3 (T46+T46+T32) Recombinant Rabbit

PAGE 4



Western blotting analysis using anti-Phospho-eIF4EBP1/2/3 (T46+T46+T32) antibody (Cat#61630). Phospho-eIF4EBP1/2/3 (T46+T46+T32) expression in wild type (WT) and Phospho-eIF4EBP1/2/3 (T46+T46+T32) shRNA knockdown (KD) HeLa cells with 20 µg of total cell lysates. Hsp90 α serves as a loading control. The blot was incubated with anti-Phospho-eIF4EBP1/2/3 (T46+T46+T32) antibody (Cat#61630, 1:5,000) and HRP-conjugated goat anti-rabbit secondary antibody (Cat#201, 1:20,000) respectively. Image was developed using FeQ™ ECL Substrate Kit (Cat#226).

SUPPORT

SUPPORT@GENUINBIOTECH.COM
TEL: +1-540-855-7041

ORDERS

SALES@GENUINBIOTECH.COM
FAX: +1-540-855-7041

WWW.GENUINBIOTECH.COM