

KD-Validated Anti-Phospho-PRAS40 (T246) Recombinant Rabbit Monoclonal Antibody



Catalog #: 61633

Aliases

AKT1S1; AKT1 Substrate 1; PRAS40; 40 KDa Proline-Rich AKT Substrate; Proline-Rich AKT1 Substrate 1; MGC2865; Lobe; Proline-Rich Akt Substrate, 40 KDa; AKT1 Substrate 1 (Proline-Rich); AKT1 Substrate 1 (Proline Rich); LOBE

Background

Gene Name: AKT1S1

NCBI Gene Entry: [84335](#)

UniProt Entry: [Q96B36](#)

Application Information

Molecular Weight: Predicted, 27 kDa, observed, 40 kDa

Clonality: Rabbit monoclonal antibody

Clone ID: 23GB3855

Species Reactivity: Human, mouse, rat

Applications Tested: Western blotting (WB), flow cytometry (FCM), immunocytochemistry (IC)

Immunogen

A synthesized peptide derived from human Phospho-PRAS40 (T246)

Isotype

Rabbit IgG

Storage Buffer

Supplied in PBS (pH 7.4) containing 50% glycerol, and 0.02% sodium azide.

Storage

Store at -20 °C for one year.

Recommended Dilutions

Western Blotting (WB): 1:1,000-1:5,000

Flow Cytometry (FCM): 1:2,000

Immunocytochemistry (IC): 1:100-1:1,000

Note: This product is for research use only.

SUPPORT

SUPPORT@GENUINBIOTECH.COM
TEL: +1-540-855-7041

ORDERS

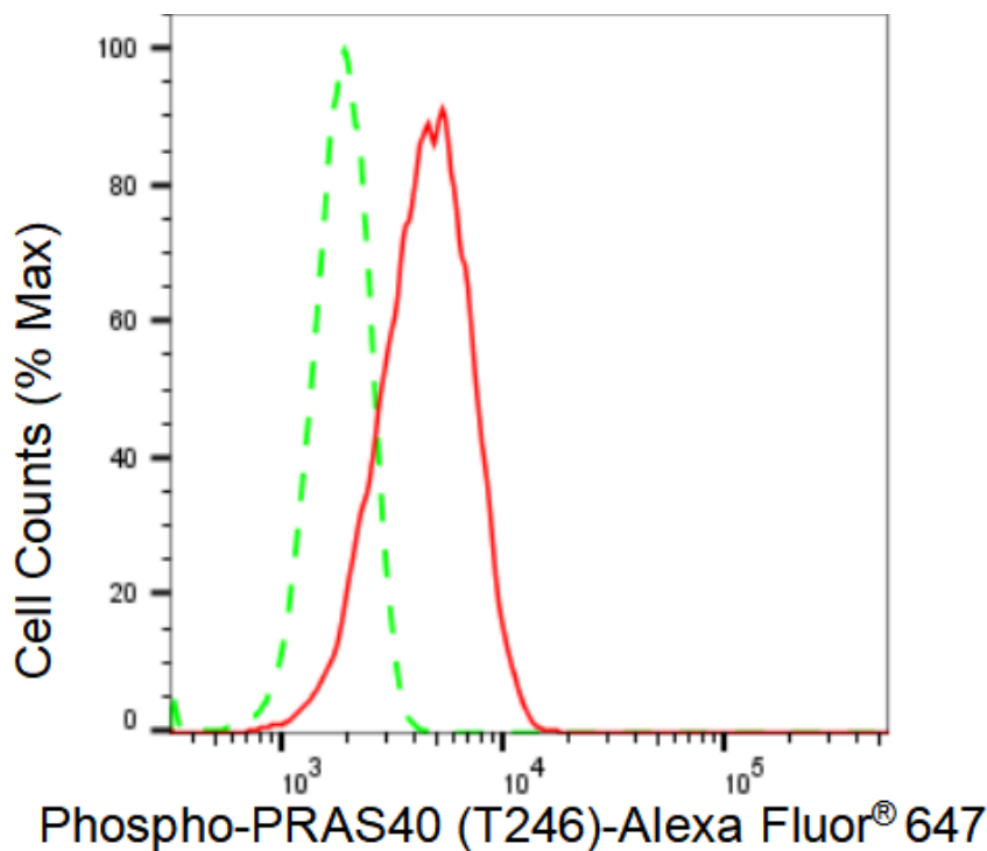
SALES@GENUINBIOTECH.COM
FAX: +1-540-855-7041

WWW.GENUINBIOTECH.COM

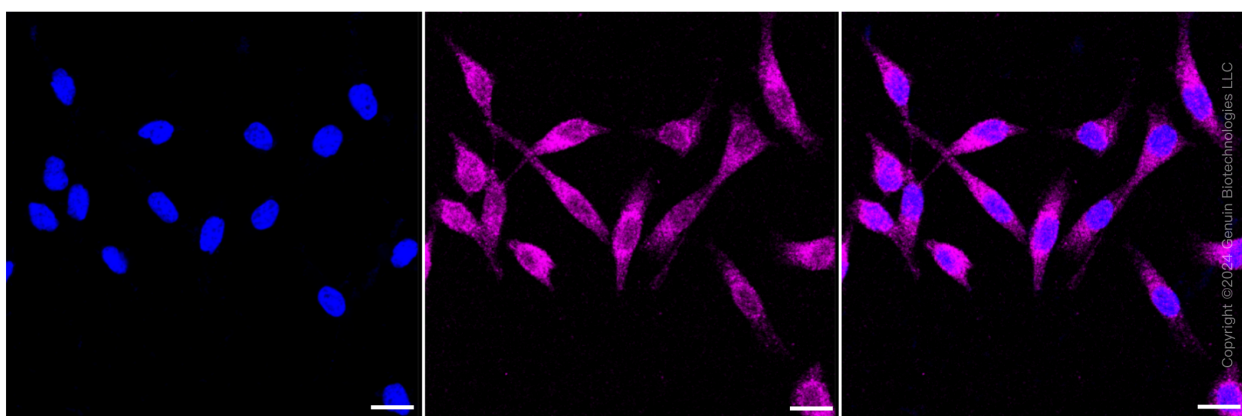
KD-Validated Anti-Phospho-PRAS40 (T246) Recombinant Rabbit Monoclonal Antibody

PAGE 2

Validation Data



Flow cytometric analysis of Phospho-PRAS40 (T246) expression in HeLa cells using Phospho-PRAS40 (T246) antibody (Cat#61633, 1:2,000). Green, isotype control; red, Phospho-PRAS40 (T246).



Immunocytochemical staining of HeLa cells with Phospho-PRAS40 (T246) antibody (Cat#61633, 1:1,000). Nuclei were stained blue with DAPI; Phospho-PRAS40 (T246) was stained magenta with Alexa Fluor® 647. Images were taken using Leica stellaris 5. Protein abundance based on laser Intensity and smart gain: Low. Scale bar: 20 μ m.

SUPPORT

SUPPORT@GENUINBIOTECH.COM
TEL: +1-540-855-7041

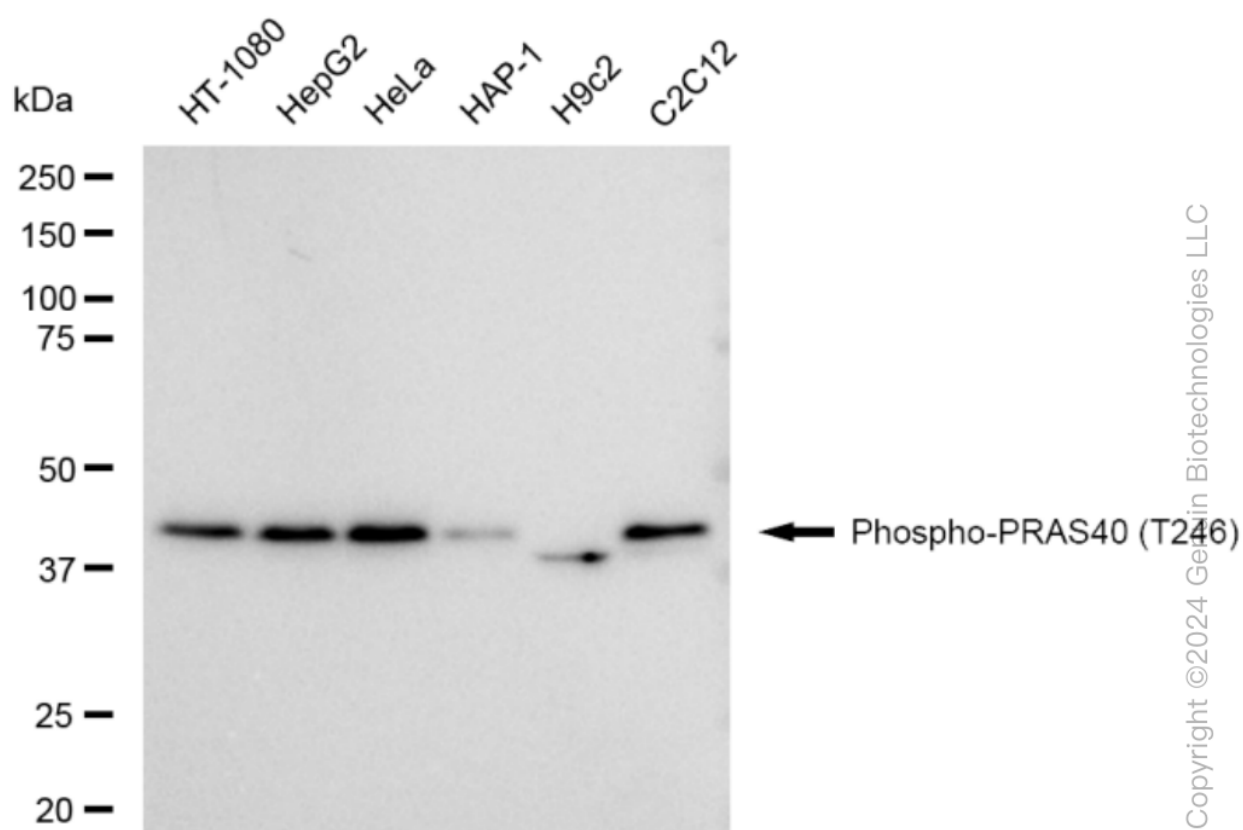
ORDERS

SALES@GENUINBIOTECH.COM
FAX: +1-540-855-7041

WWW.GENUINBIOTECH.COM

KD-Validated Anti-Phospho-PRAS40 (T246) Recombinant Rabbit Monoclonal Antibody

PAGE 3



Western blotting analysis using anti-Phospho-PRAS40 (T246) antibody (Cat#61633). Total cell lysates (30 µg) from various cell lines were loaded and separated by SDS-PAGE. The blot was incubated with anti-Phospho-PRAS40 (T246) antibody (Cat#61633, 1:5,000) and HRP-conjugated goat anti-rabbit secondary antibody (Cat#201, 1:20,000) respectively. Image was developed using FeQ™ ECL Substrate Kit (Cat#226).

SUPPORT

SUPPORT@GENUINBIOTECH.COM
TEL: +1-540-855-7041

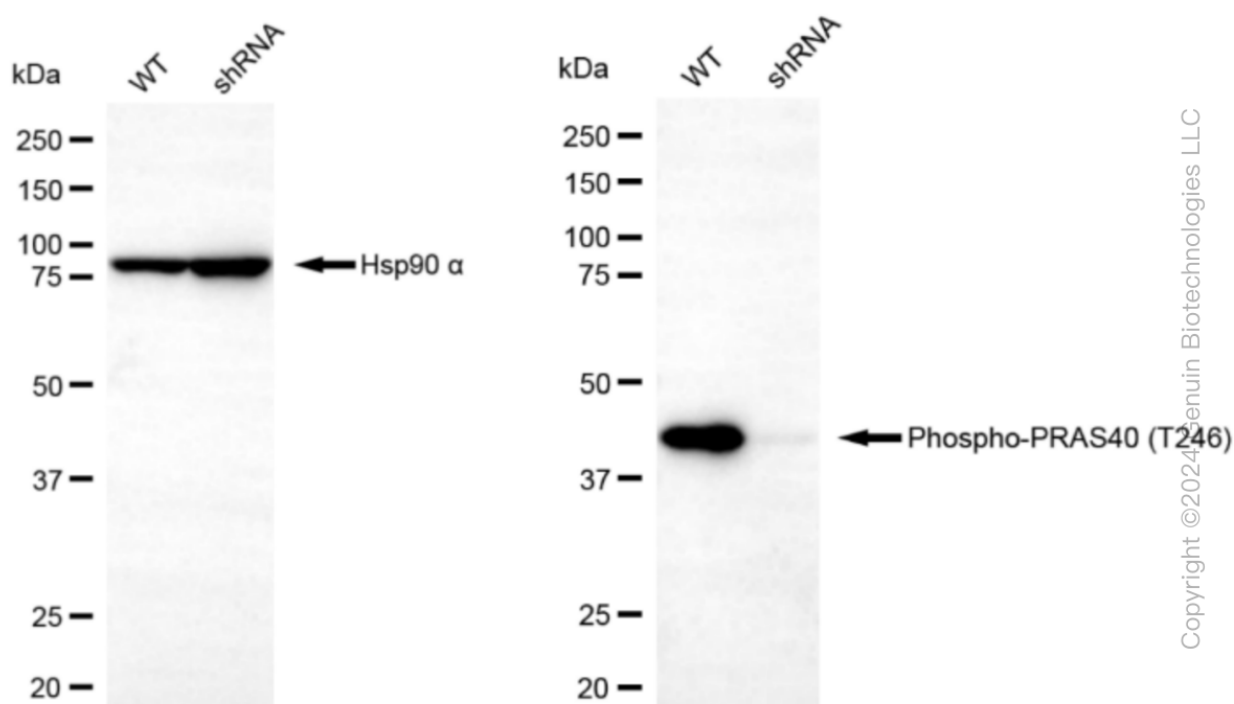
ORDERS

SALES@GENUINBIOTECH.COM
FAX: +1-540-855-7041

WWW.GENUINBIOTECH.COM

KD-Validated Anti-Phospho-PRAS40 (T246) Recombinant Rabbit Monoclonal Antibody

PAGE 4



Western blotting analysis using anti-Phospho-PRAS40 (T246) antibody (Cat#61633). Phospho-PRAS40 (T246) expression in wild type (WT) and Phospho-PRAS40 (T246) shRNA knockdown (KD) HeLa cells with 30 µg of total cell lysates. Hsp90 α serves as a loading control. The blot was incubated with anti-Phospho-PRAS40 (T246) antibody (Cat#61633, 1:5,000) and HRP-conjugated goat anti-rabbit secondary antibody (Cat#201, 1:20,000) respectively. Image was developed using FeQ™ ECL Substrate Kit (Cat#226).

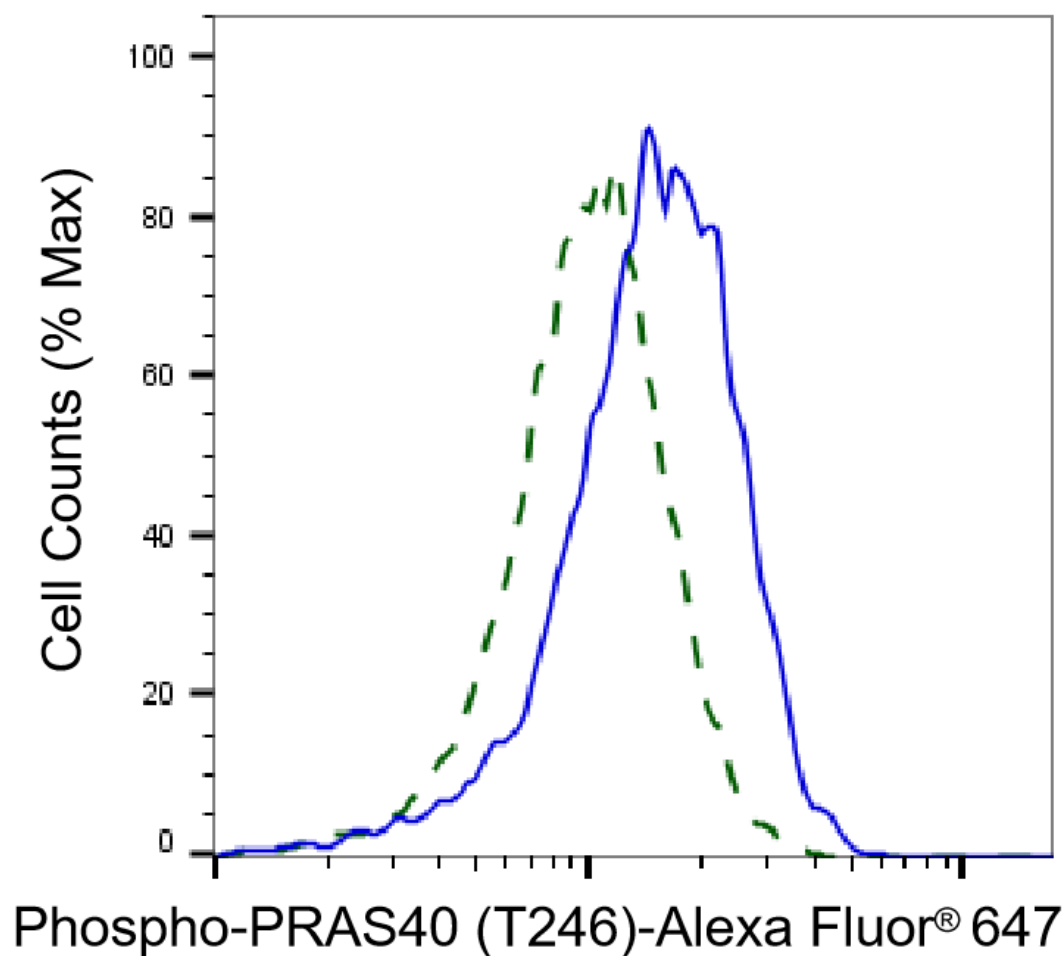
SUPPORT

SUPPORT@GENUINBIOTECH.COM
TEL: +1-540-855-7041

ORDERS

SALES@GENUINBIOTECH.COM
FAX: +1-540-855-7041

WWW.GENUINBIOTECH.COM



Validation of PRAS40 knockdown using flow cytometry. Wild-type(WT, Blue) and knockdown(KD, Green) HeLa cells were stained with anti-Phospho-PRAS40 (T246) antibody (Cat#61633, 1:2,000) and analyzed using BD flow cytometer.