

# KD-Validated Anti-Adenosine Deaminase RNA Specific Recombinant Rabbit Monoclonal



## Catalog #: 61635

### Aliases

ADAR; Adenosine Deaminase RNA Specific; ADAR1; DRADA; Double-Stranded RNA-Specific Adenosine Deaminase; G1P1; IFI4; 136 KDa Double-Stranded RNA-Binding Protein; Interferon-Inducible Protein 4; Interferon-Induced Protein 4; K88DSRBP; DSRAD; IFI-4; P136; Adenosine Deaminase Acting On RNA 1-A; DsRNA Adeonosine Deaminase; DsRNA Adenosine Deaminase; EC 3.5.4.37; EC 3.5.4; AGS6; DSH

### Background

Gene Name: ADAR

NCBI Gene Entry: [103](#)

UniProt Entry: [P55265](#)

### Application Information

Molecular Weight: Predicted, 136 kDa, observed, 150 kDa

Clonality: Rabbit monoclonal antibody

Clone ID: 25GB3090

Species Reactivity: Human

Applications Tested: Western blotting (WB), flow cytometry (FCM), immunocytochemistry (IC)

### Immunogen

A synthesized peptide derived from human ADAR1

### Isotype

Rabbit IgG

### Storage Buffer

Supplied in PBS (pH 7.4) containing 50% glycerol, and 0.02% sodium azide.

### Storage

Store at -20 °C for one year.

### Recommended Dilutions

Western blotting (WB): 1:1,000-1:5,000

Flow Cytometry (FCM): 1:2,000

Immunocytochemistry (IC): 1:100-1:1,000

---

#### SUPPORT

SUPPORT@GENUINBIOTECH.COM  
TEL: +1-540-855-7041

#### ORDERS

SALES@GENUINBIOTECH.COM  
FAX: +1-540-855-7041

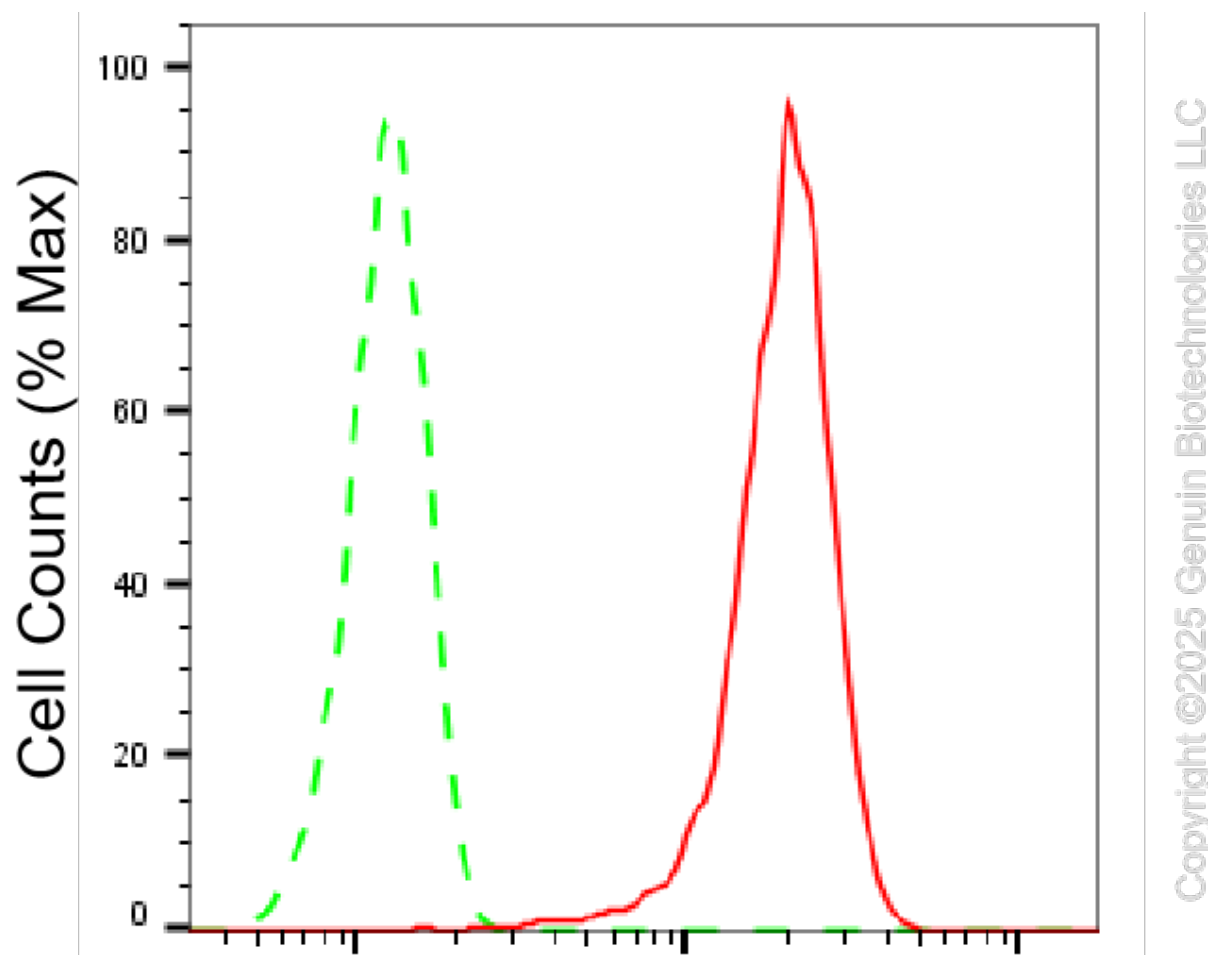
[WWW.GENUINBIOTECH.COM](http://WWW.GENUINBIOTECH.COM)

## KD-Validated Anti-Adenosine Deaminase RNA Specific Recombinant Rabbit Monoclonal

PAGE 2

**Note:** This product is for research use only.

### Validation Data



### Adenosine deaminase RNA specific-Alexa Fluor® 647

Flow cytometric analysis of Adenosine deaminase RNA specific expression in HepG2 cells using anti-Adenosine deaminase RNA specific antibody (Cat#61635, 1:2,000). Green, isotype control; red, Adenosine deaminase RNA specific.

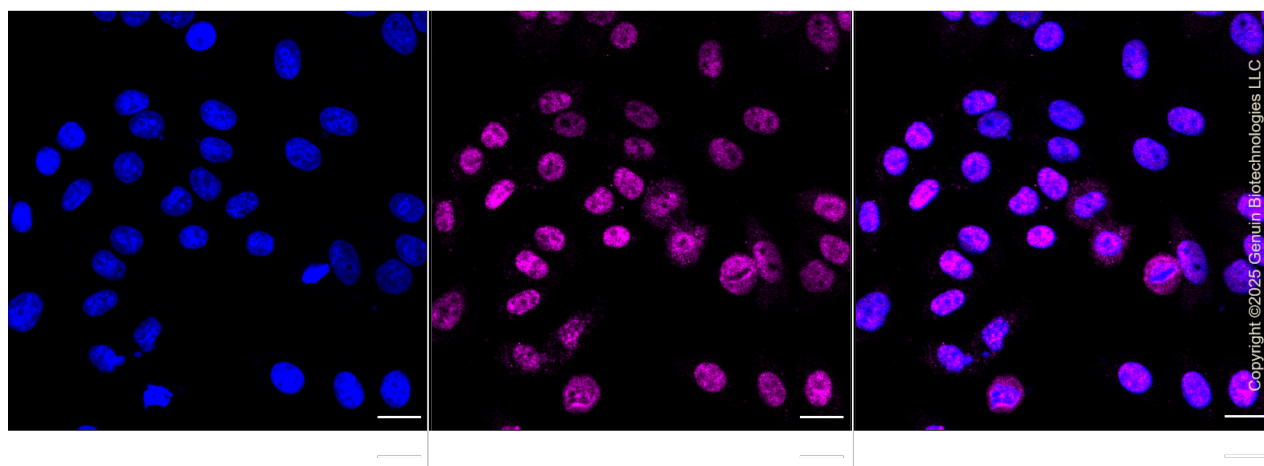
#### SUPPORT

SUPPORT@GENUINBIOTECH.COM  
TEL: +1-540-855-7041

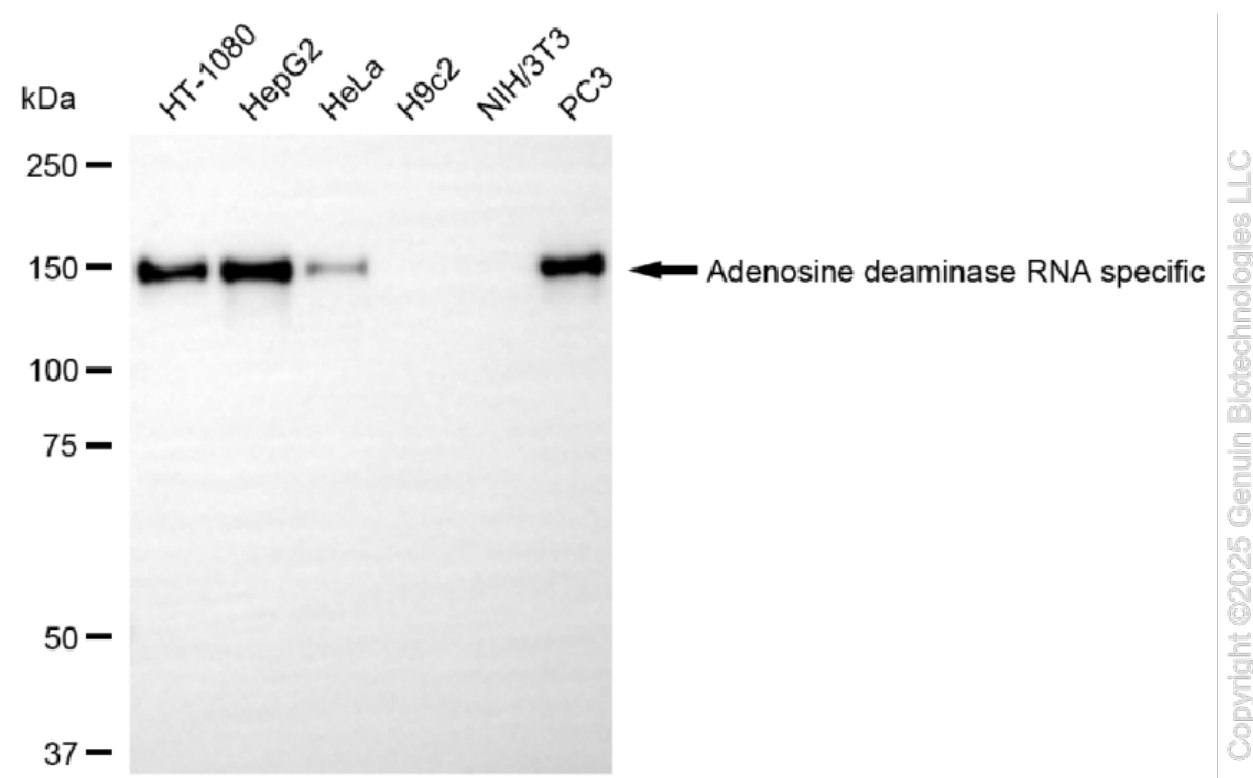
#### ORDERS

SALES@GENUINBIOTECH.COM  
FAX: +1-540-855-7041

WWW.GENUINBIOTECH.COM



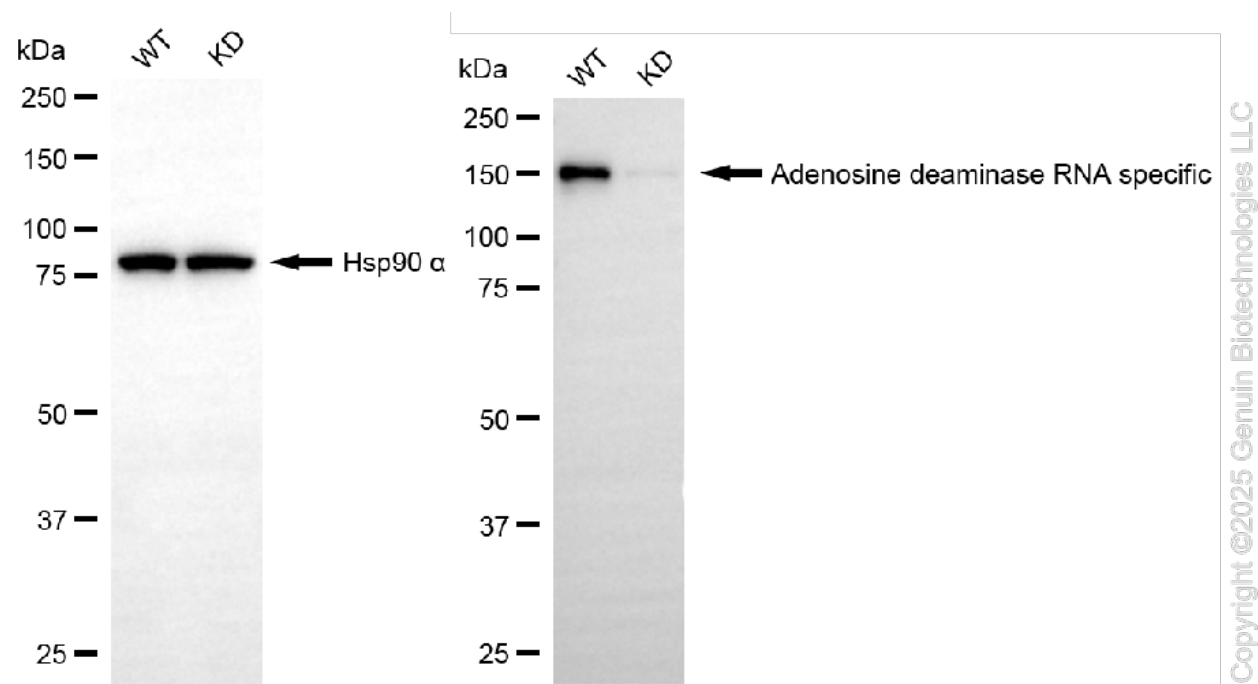
Immunocytochemical staining of HepG2 cells with Adenosine deaminase RNA specific antibody (Cat#61635, 1:1,000). Nuclei were stained blue with DAPI; Adenosine deaminase RNA specific was stained magenta with Alexa Fluor® 647. Images were taken using Leica stellaris 5. Protein abundance based on laser Intensity and smart gain: Medium. Scale bar, 20  $\mu$ m.



Western blotting analysis using anti-adenosine deaminase RNA specific antibody (Cat#61635). Total cell lysates (30  $\mu$ g) from various cell lines were loaded and separated by SDS-PAGE. The blot was incubated with anti-adenosine deaminase RNA specific antibody (Cat#61635, 1:5,000) and HRP-conjugated goat anti rabbit secondary antibody (Cat#201, 1:20,000) respectively. Image was developed using NaQ™ ECL Substrate Kit (Cat#716).

## KD-Validated Anti-Adenosine Deaminase RNA Specific Recombinant Rabbit Monoclonal

PAGE 4



Western blotting analysis using anti-adenosine deaminase RNA specific antibody (Cat#61635). Adenosine deaminase RNA specific expression in wild-type (WT) and adenosine deaminase RNA specific (ADAR) knockdown (KD) 293T cells with 20 µg of total cell lysates. Hsp90 α serves as a loading control. The blot was incubated with anti-adenosine deaminase RNA specific antibody (Cat#61635, 1:5,000) and HRP-conjugated goat anti-rabbit secondary antibody (Cat#201, 1:20,000) respectively. Image was developed using NaQ™ ECL Substrate Kit (Cat#716).

### SUPPORT

SUPPORT@GENUINBIOTECH.COM  
TEL: +1-540-855-7041

### ORDERS

SALES@GENUINBIOTECH.COM  
FAX: +1-540-855-7041

[WWW.GENUINBIOTECH.COM](http://WWW.GENUINBIOTECH.COM)