

# KD-Validated Anti-Phospho-BCAR1 (Y410) Recombinant Rabbit Monoclonal Antibody



**Catalog #: 61636**

## Aliases

BCAR1; BCAR1 Scaffold Protein, Cas Family Member; CASS1; CAS; Cas Scaffolding Protein Family Member 1; CRKAS; Breast Cancer Anti-Estrogen Resistance Protein 1; BCAR1, Cas Family Scaffolding Protein; BCAR1, Cas Family Scaffold Protein; P130Cas; Breast Cancer Anti-Estrogen Resistance 1; Crk-Associated Substrate P130Cas; Crk-Associated Substrate; CRK-Associated Substrate; P130CAS; P130cas; Crkas; CAS1

## Background

Gene Name: BCAR1

NCBI Gene Entry: [9564](#)

UniProt Entry: [P56945](#)

## Application Information

Molecular Weight: Predicted, 93 kDa, observed, 130 kDa

Clonality: Rabbit monoclonal antibody

Clone ID: 23GB3870

Species Reactivity: Human, mouse, rat

Applications Tested: Western blotting (WB), flow cytometry (FCM), immunocytochemistry (IC)

## Immunogen

A synthesized peptide derived from human Phospho-BCAR1 (Y410)

## Isotype

Rabbit IgG

## Storage Buffer

Supplied in PBS (pH 7.4) containing 50% glycerol, and 0.02% sodium azide.

## Storage

Store at -20 °C for one year.

## Recommended Dilutions

Western Blotting (WB): 1:1,000-1:5,000

Flow Cytometry (FCM): 1:2,000

Immunocytochemistry (IC): 1:100-1:1,000

---

### SUPPORT

SUPPORT@GENUINBIOTECH.COM  
TEL: +1-540-855-7041

### ORDERS

SALES@GENUINBIOTECH.COM  
FAX: +1-540-855-7041

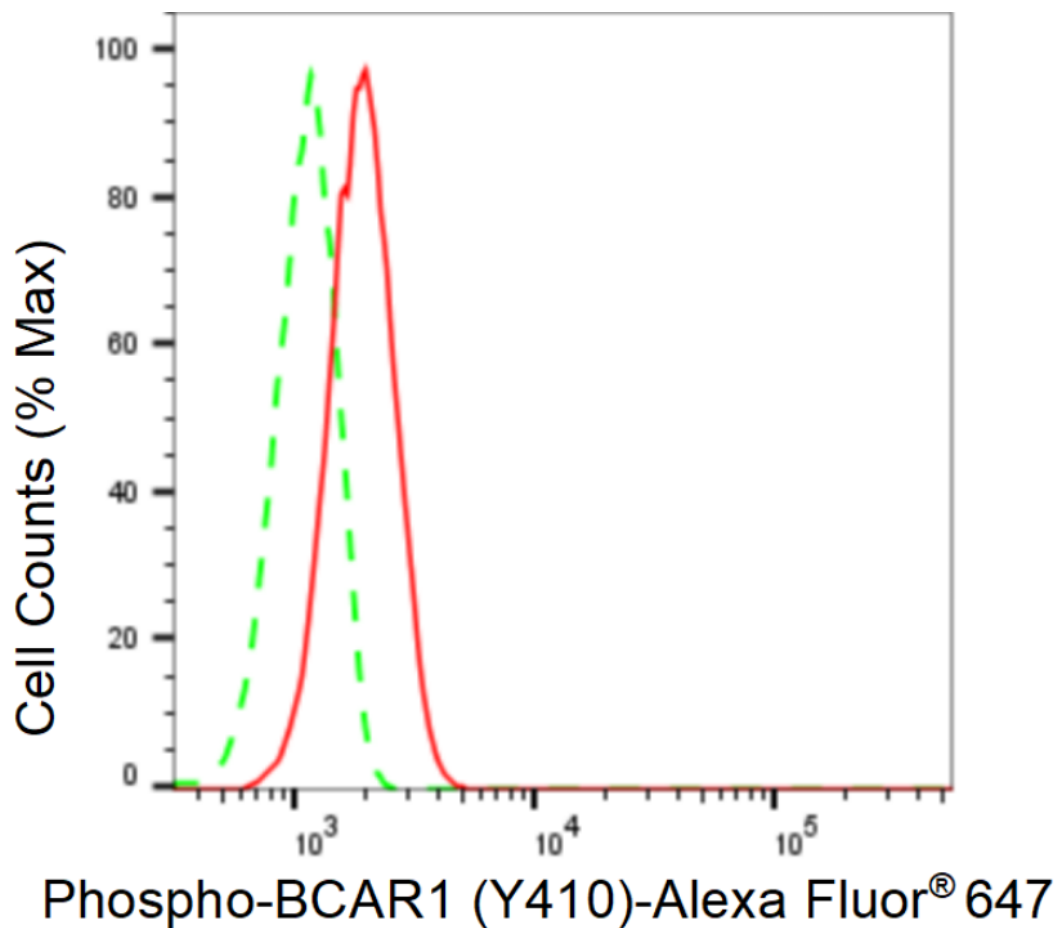
[WWW.GENUINBIOTECH.COM](http://WWW.GENUINBIOTECH.COM)

## KD-Validated Anti-Phospho-BCAR1 (Y410) Recombinant Rabbit Monoclonal Antibody

PAGE 2

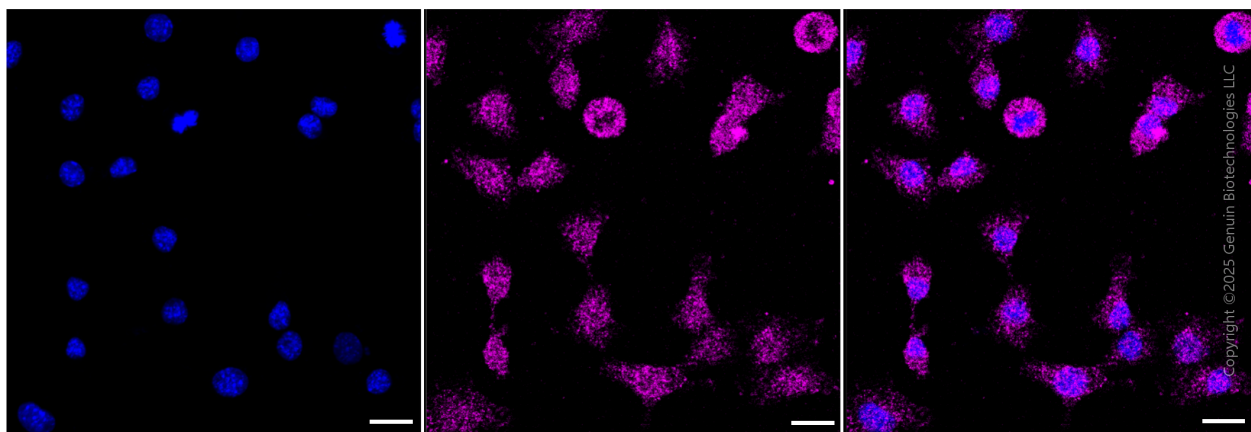
**Note:** This product is for research use only.

### Validation Data



Copyright ©2024 Genuin Biotechnologies LLC

Flow cytometric analysis of Phospho-BCAR1 (Y410) expression in C2C12 cells using Phospho-BCAR1 (Y410) antibody (Cat#61636, 1:2,000). Green, isotype control; red, Phospho-BCAR1 (Y410).



Immunocytochemical staining of HepG2 cells with anti-Phospho-BCAR1 (Y410) antibody

#### SUPPORT

SUPPORT@GENUINBIOTECH.COM  
TEL: +1-540-855-7041

#### ORDERS

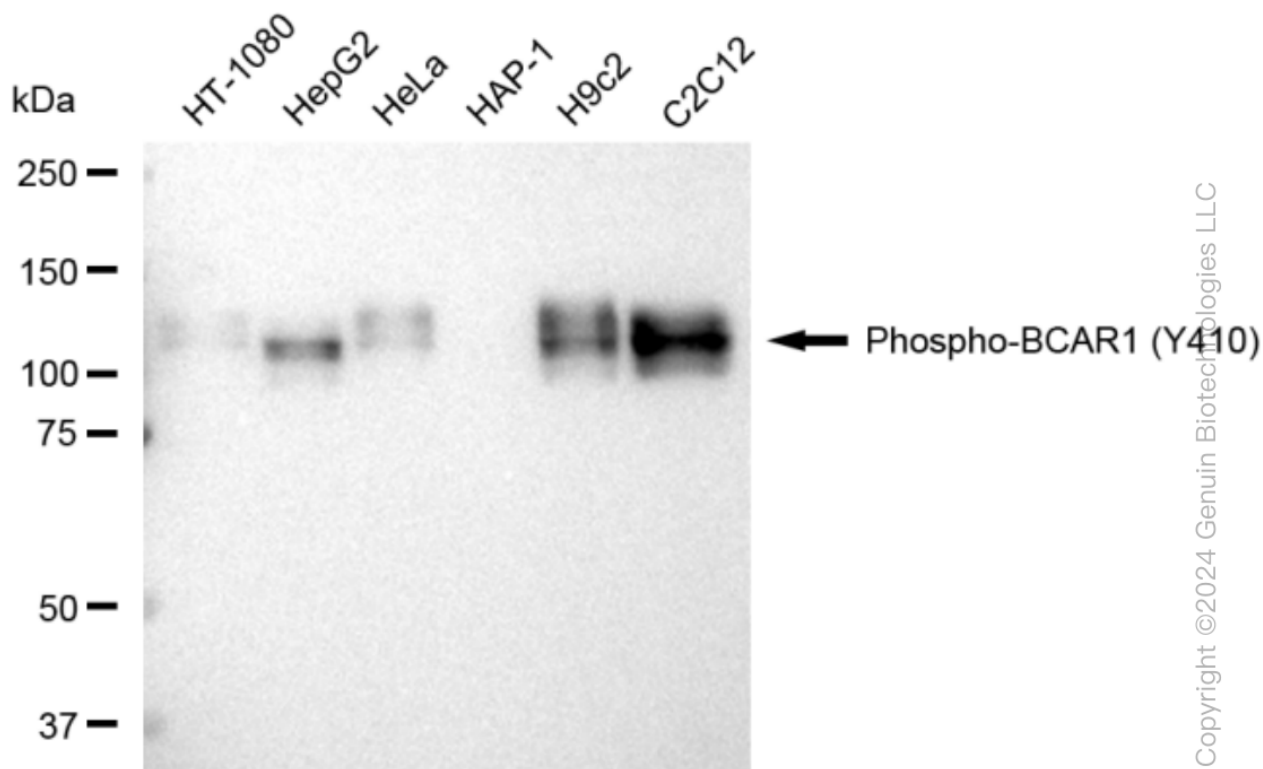
SALES@GENUINBIOTECH.COM  
FAX: +1-540-855-7041

[WWW.GENUINBIOTECH.COM](http://WWW.GENUINBIOTECH.COM)

## KD-Validated Anti-Phospho-BCAR1 (Y410) Recombinant Rabbit Monoclonal Antibody

PAGE 3

(Cat#61636, 1:1,000) . Nuclei were stained blue with anti-DAPI; Phospho-BCAR1 (Y410) was stained magenta with Alexa Fluor® 647. Images were taken using Leica stellaris 5. Protein abundance based on laser Intensity and smart gain: Low. Scale bar, 20  $\mu$ m.



Western blotting analysis using anti-Phospho-BCAR1 (Y410) antibody (Cat#61636). Total cell lysates (30  $\mu$ g) from various cell lines were loaded and separated by SDS-PAGE. The blot was incubated with anti-Phospho-BCAR1 (Y410) antibody (Cat#61636, 1:5,000) and HRP-conjugated goat anti-rabbit secondary antibody (Cat#201, 1:20,000) respectively. Image was developed using FeQ™ ECL Substrate Kit (Cat#226).

### SUPPORT

SUPPORT@GENUINBIOTECH.COM  
TEL: +1-540-855-7041

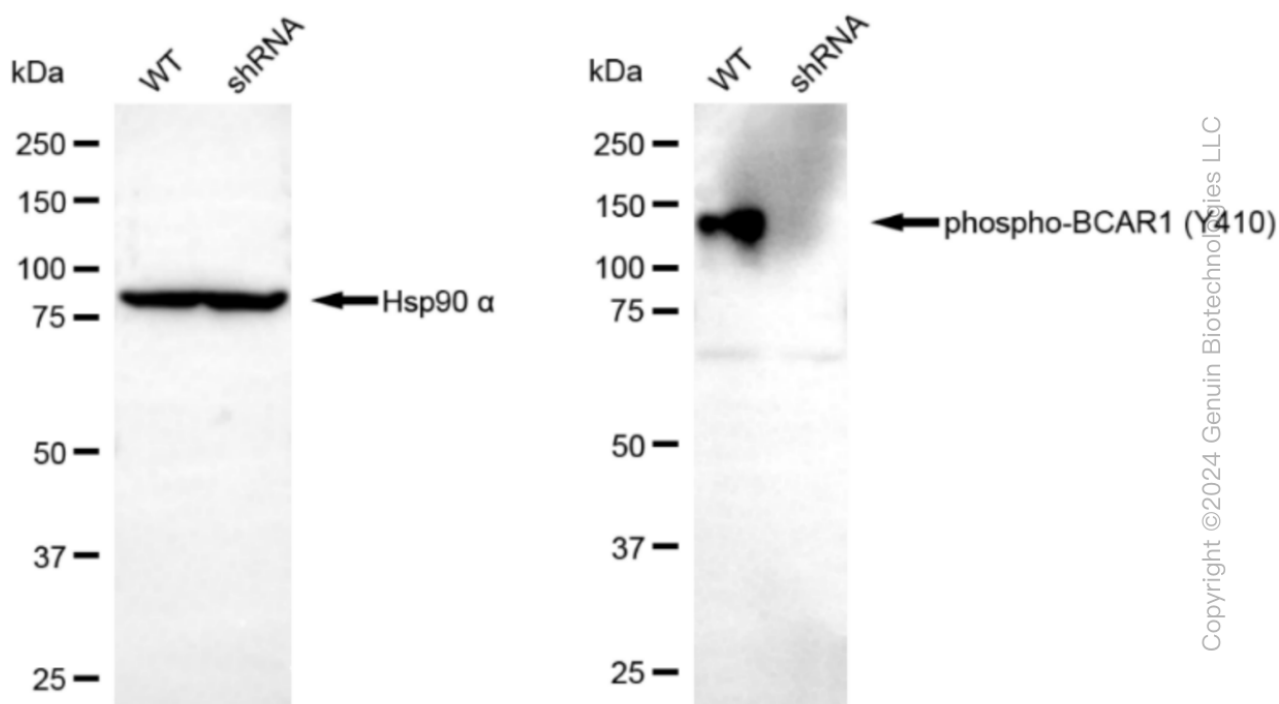
### ORDERS

SALES@GENUINBIOTECH.COM  
FAX: +1-540-855-7041

WWW.GENUINBIOTECH.COM

## KD-Validated Anti-Phospho-BCAR1 (Y410) Recombinant Rabbit Monoclonal Antibody

PAGE 4



Western blotting analysis using anti-Phospho-BCAR1 (Y410) antibody (Cat#61636). Phospho-BCAR1 (Y410) expression in wild type (WT) and BCAR1 shRNA knockdown (KD) HeLa cells with 30  $\mu$ g of total cell lysates.  $\beta$ -Tubulin serves as a loading control. The blot was incubated with anti-Phospho-BCAR1 (Y410) antibody (Cat#61636, 1:5,000) and HRP-conjugated goat anti-rabbit secondary antibody (Cat#201, 1:20,000) respectively. Image was developed using FeQ™ ECL Substrate Kit (Cat#226).

### SUPPORT

SUPPORT@GENUINBIOTECH.COM  
TEL: +1-540-855-7041

### ORDERS

SALES@GENUINBIOTECH.COM  
FAX: +1-540-855-7041

[WWW.GENUINBIOTECH.COM](http://WWW.GENUINBIOTECH.COM)