

# KD-Validated Anti-Monoamine Oxidase A Recombinant Rabbit Monoclonal Antibody



**Catalog #: 61637**

## Aliases

MAOA; Monoamine Oxidase A; Amine Oxidase [Flavin-Containing] A; Monoamine Oxidase Type A; EC 1.4.3.4; MAO-A; EC 1.4.3.21; EC 1.4.3; BRNRS

## Background

Gene Name: MAOA

NCBI Gene Entry: [4128](#)

UniProt Entry: [P21397](#)

## Application Information

Molecular Weight: Predicted, 60 kDa; observed, 60 kDa

Clonality: Rabbit monoclonal antibody

Clone ID: 25GB3095

Species Reactivity: Human, mouse, rat

Applications Tested: Western blotting (WB), flow cytometry (FCM), immunocytochemistry (IC)

## Immunogen

A synthesized peptide derived from human Monoamine Oxidase A

## Isotype

Rabbit IgG

## Storage Buffer

Supplied in PBS (pH 7.4) containing 50% glycerol, and 0.02% sodium azide.

## Storage

Store at -20 °C for one year.

## Recommended Dilutions

Western Blotting (WB): 1:1,000-1:5,000

Flow Cytometry (FCM): 1:2,000

Immunocytochemistry (IC): 1:100-1:1,000

**Note:** This product is for research use only.

## Validation Data

---

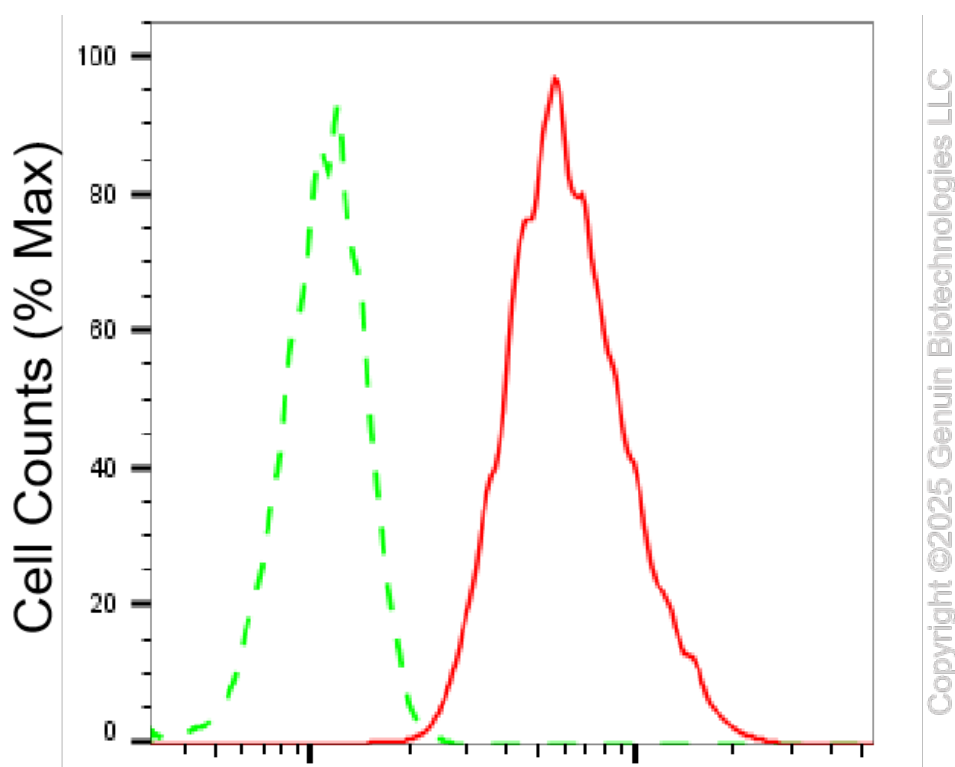
### SUPPORT

SUPPORT@GENUINBIOTECH.COM  
TEL: +1-540-855-7041

### ORDERS

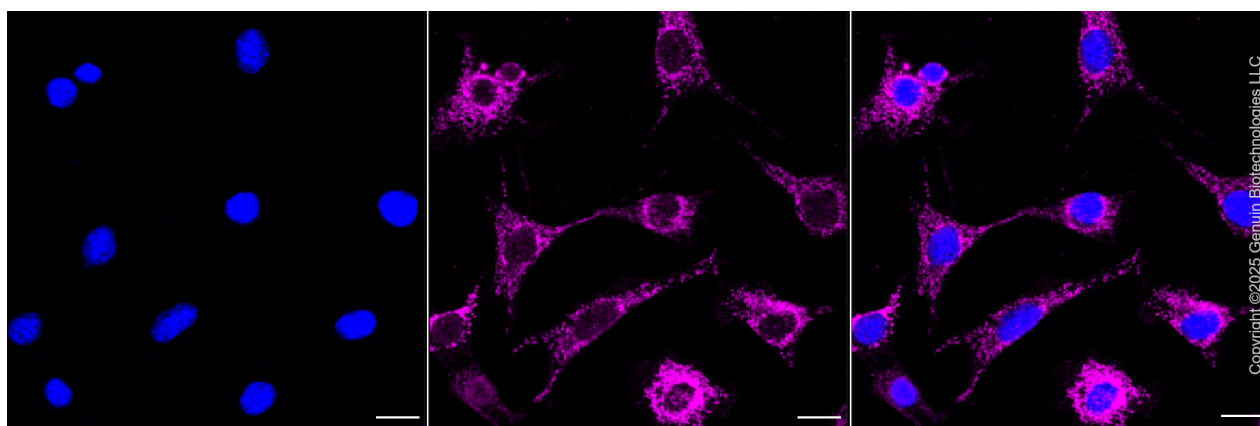
SALES@GENUINBIOTECH.COM  
FAX: +1-540-855-7041

[WWW.GENUINBIOTECH.COM](http://WWW.GENUINBIOTECH.COM)



### Monoamine oxidase A-Alexa Fluor® 647

Flow cytometric analysis of Monoamine oxidase A expression in C2C12 cells using anti-Monoamine oxidase A antibody (Cat#61637, 1:2,000). Green, isotype control; red, Monoamine oxidase A.



Immunocytochemical staining of C2C12 cells with anti-Monoamine oxidase A antibody (Cat#61637, 1:1,000). Nuclei were stained blue with DAPI; Monoamine oxidase A was stained magenta with Alexa Fluor® 647. Images were taken using Leica stellaris 5. Protein abundance based on laser Intensity and smart gain: Medium. Scale bar, 20  $\mu$ m.

#### SUPPORT

SUPPORT@GENUINBIOTECH.COM  
TEL: +1-540-855-7041

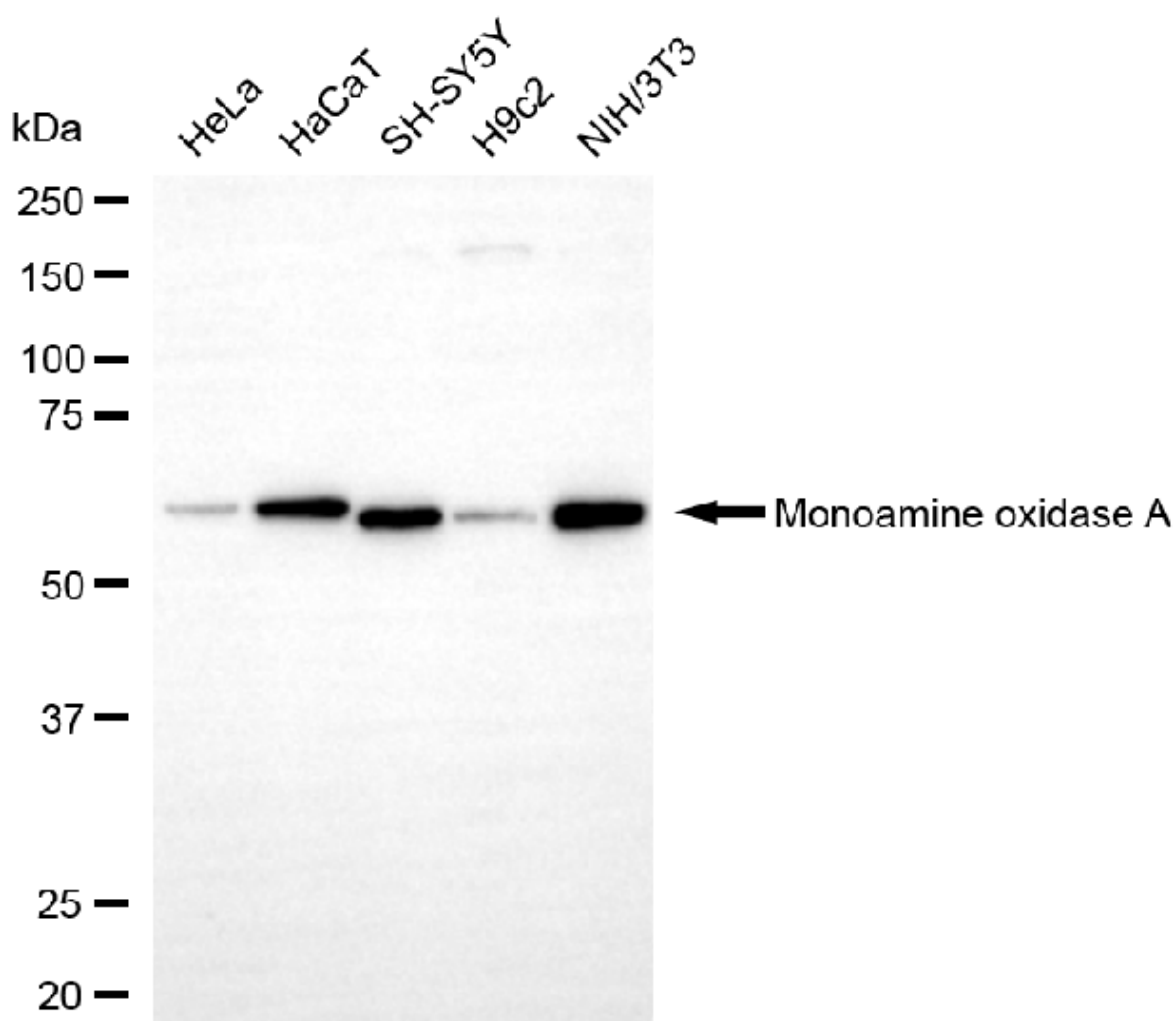
#### ORDERS

SALES@GENUINBIOTECH.COM  
FAX: +1-540-855-7041

[WWW.GENUINBIOTECH.COM](http://WWW.GENUINBIOTECH.COM)

## KD-Validated Anti-Monoamine Oxidase A Recombinant Rabbit Monoclonal Antibody

PAGE 3



Copyright ©2025 Genuin Biotechnologies LLC

Western blotting analysis using anti-monoamine oxidase A antibody (Cat#61637). Total cell lysates (30  $\mu$ g) from various cell lines were loaded and separated by SDS-PAGE. The blot was incubated with anti-monoamine oxidase A antibody (Cat#61637, 1:5,000) and HRP-conjugated goat anti-rabbit secondary antibody (Cat#201, 1:20,000) respectively. Image was developed using NaQ™ ECL Substrate Kit (Cat#716).

### SUPPORT

SUPPORT@GENUINBIOTECH.COM  
TEL: +1-540-855-7041

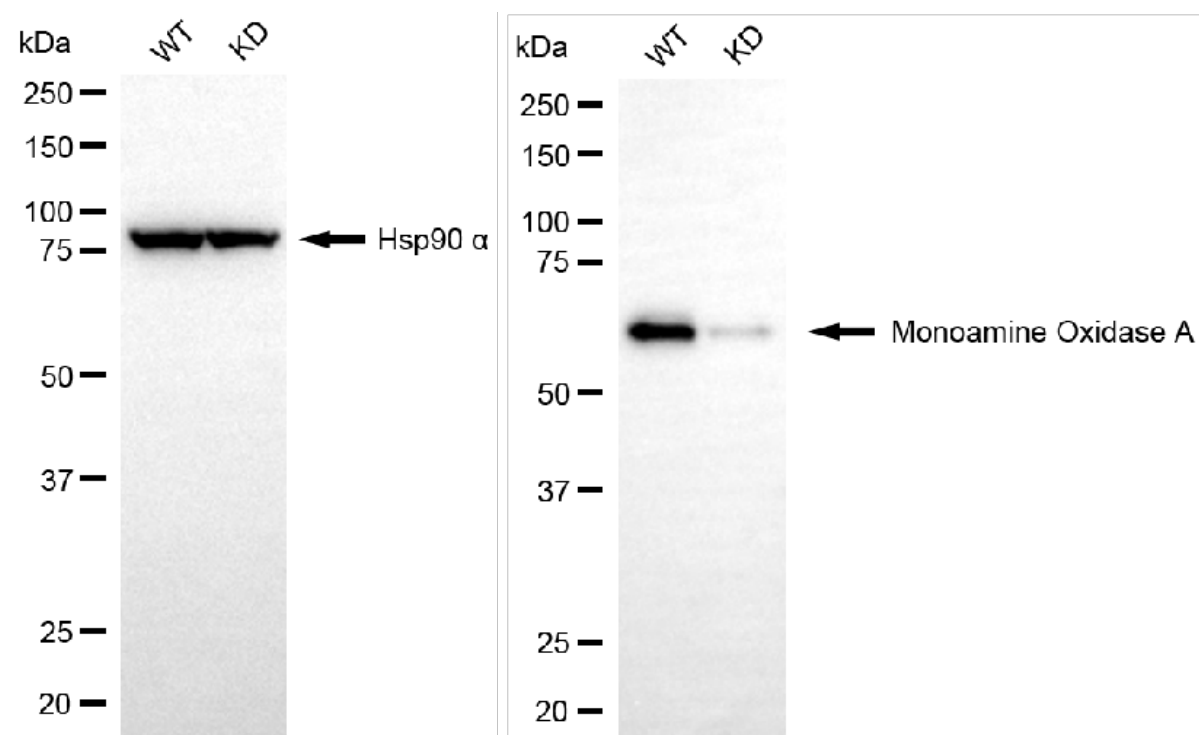
### ORDERS

SALES@GENUINBIOTECH.COM  
FAX: +1-540-855-7041

WWW.GENUINBIOTECH.COM

## KD-Validated Anti-Monoamine Oxidase A Recombinant Rabbit Monoclonal Antibody

PAGE 4



Copyright ©2025 Genuin Biotechnologies LLC

Western blotting analysis using anti-monoamine oxidase A antibody (Cat#61637). Monoamine oxidase A expression in wild-type (WT) and monoamine oxidase A (MAOA) knockdown (KD) HeLa cells with 20 µg of total cell lysates. Hsp90 α serves as a loading control. The blot was incubated with anti-monoamine oxidase A antibody (Cat#61637, 1:5,000) and HRP-conjugated goat anti-rabbit secondary antibody (Cat#201, 1:20,000) respectively. Image was developed using NaQ™ ECL Substrate Kit (Cat#716).

### SUPPORT

SUPPORT@GENUINBIOTECH.COM  
TEL: +1-540-855-7041

### ORDERS

SALES@GENUINBIOTECH.COM  
FAX: +1-540-855-7041

[WWW.GENUINBIOTECH.COM](http://WWW.GENUINBIOTECH.COM)