

KD-Validated Anti-NME2 Recombinant Rabbit Monoclonal Antibody



Catalog #: 61642

Aliases

NME2; NME/NM23 Nucleoside Diphosphate Kinase 2; NM23-H2; NDPKB; Non-Metastatic Cells 2, Protein (NM23B) Expressed In; C-Myc Purine-Binding Transcription Factor PUF; Nucleoside Diphosphate Kinase B; Histidine Protein Kinase NDKB; NDP Kinase B; EC 2.7.4.6; NM23B; Epididymis Secretory Sperm Binding Protein Li 155an; Non-Metastatic Cells 2, Protein (NM23) Expressed In; Nucleotide Diphosphate Kinase B; C-Myc Transcription Factor; HEL-S-155an; EC 2.7.13.3; Nm23-H2; NDPK-B; NDK B; NDKB; PUF

Background

Gene Name: NME2

NCBI Gene Entry: [4831](#)

UniProt Entry: [P22392](#)

Application Information

Molecular Weight: Predicted, 17 kDa; observed, 17 kDa

Clonality: Rabbit monoclonal antibody

Clone ID: 25GB3115

Species Reactivity: Human, mouse, rat

Applications Tested: Western blotting (WB), flow cytometry (FCM), immunocytochemistry (IC)

Immunogen

A synthesized peptide derived from human NME2

Isotype

Rabbit IgG

Storage Buffer

Supplied in PBS (pH 7.4) containing 50% glycerol, and 0.02% sodium azide.

Storage

Store at -20 °C for one year.

Recommended Dilutions

Western Blotting (WB): 1:2,000-1:10,000

Flow Cytometry (FCM): 1:2,000

Immunocytochemistry (IC): 1:100-1:1,000

SUPPORT

SUPPORT@GENUINBIOTECH.COM
TEL: +1-540-855-7041

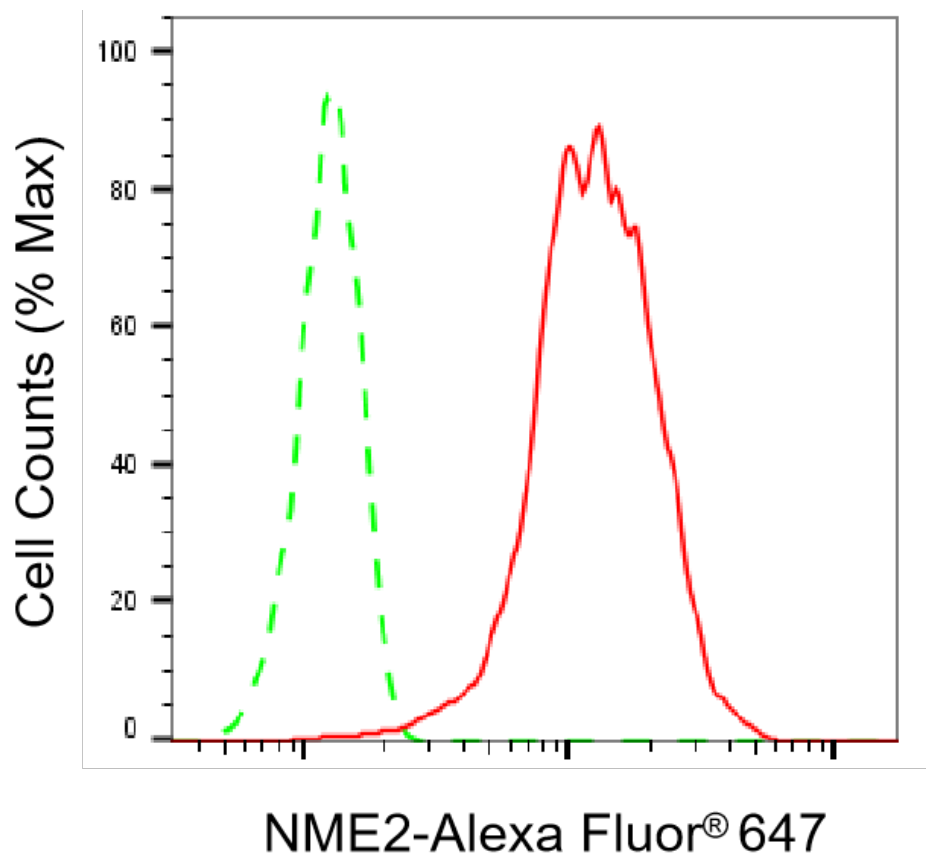
ORDERS

SALES@GENUINBIOTECH.COM
FAX: +1-540-855-7041

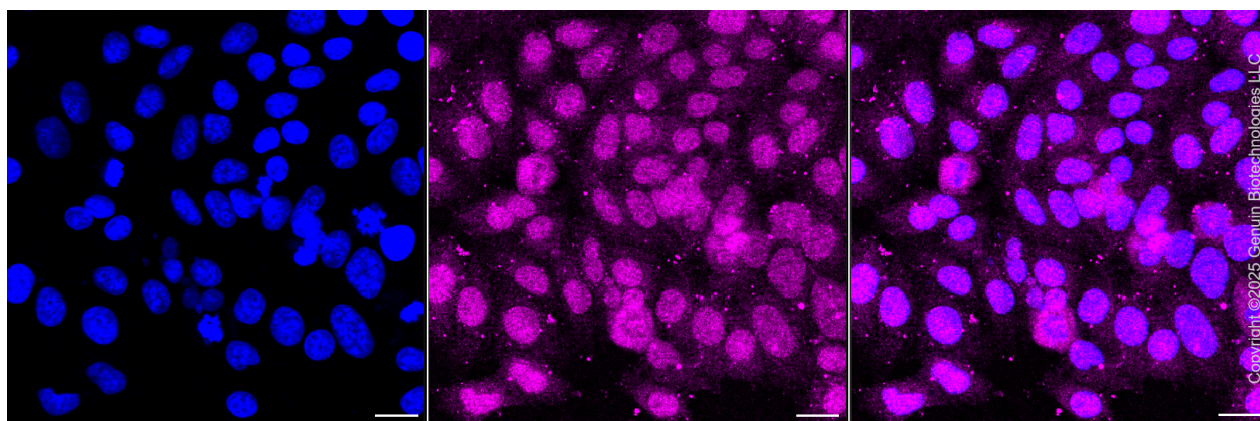
WWW.GENUINBIOTECH.COM

Note: This product is for research use only.

Validation Data



Flow cytometric analysis of NME2 expression in HepG2 cells using anti-NME2 antibody (Cat#61642, 1:2,000). Green, isotype control; red, NME2.



Immunocytochemical staining of HepG2 cells with anti-NME2 antibody (Cat#61642, 1:1,000). Nuclei were stained blue with DAPI; NME2 was stained magenta with Alexa Fluor® 647. Images were taken using Leica stellaris 5. Protein abundance based on laser Intensity and smart gain:

SUPPORT

SUPPORT@GENUINBIOTECH.COM
TEL: +1-540-855-7041

ORDERS

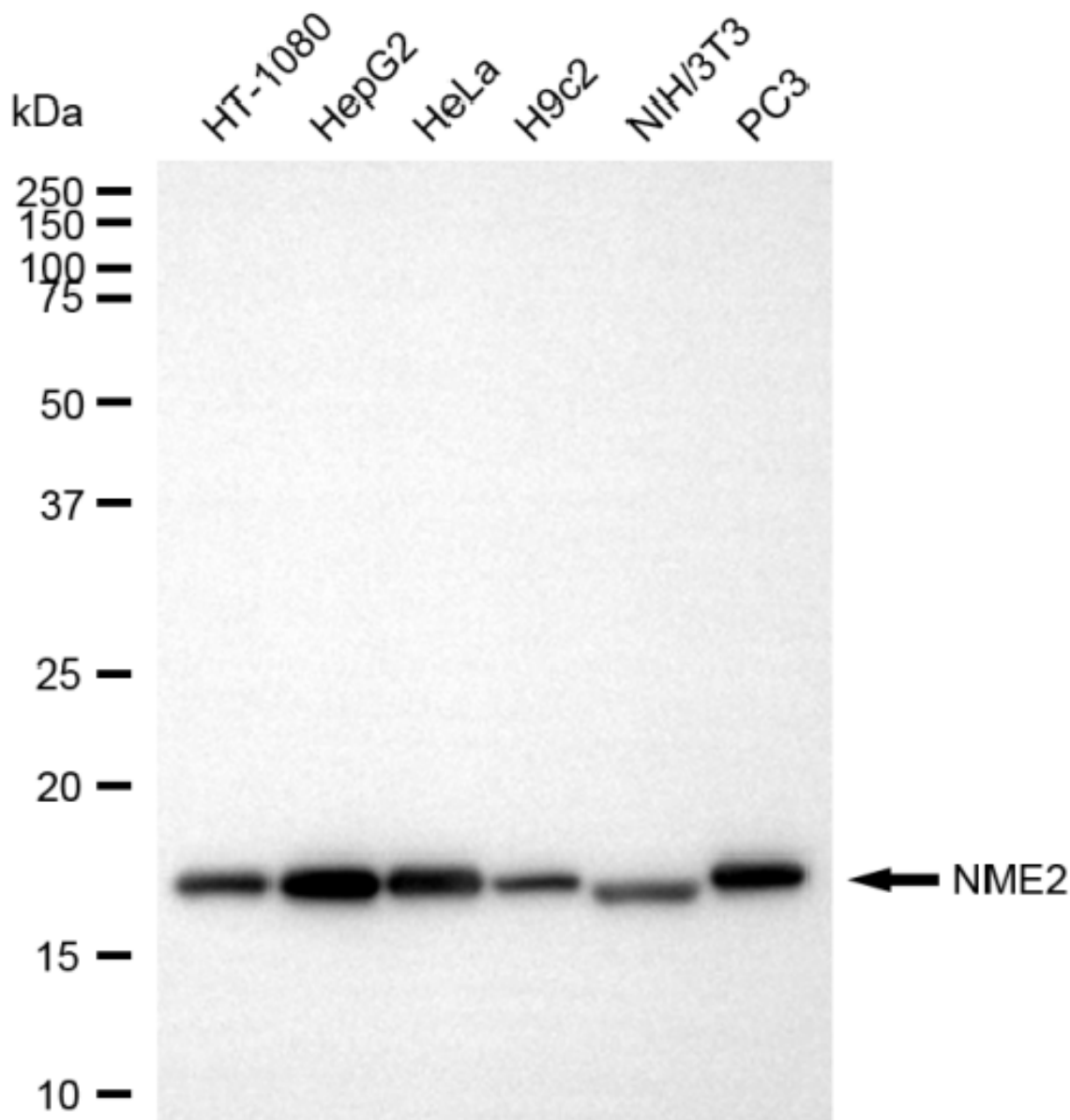
SALES@GENUINBIOTECH.COM
FAX: +1-540-855-7041

WWW.GENUINBIOTECH.COM

KD-Validated Anti-NME2 Recombinant Rabbit Monoclonal Antibody

PAGE 3

Medium. Scale bar, 20 μ m.



Copyright ©2025 Genuin Biotechnologies LLC

Western blotting analysis using anti-NME2 antibody (Cat#61642). Total cell lysates (30 μ g) from various cell lines were loaded and separated by SDS-PAGE. The blot was incubated with anti-NME2 antibody (Cat#61642, 1:10,000) and HRP-conjugated goat anti-rabbit secondary antibody (Cat#201, 1:20,000) respectively. Image was developed using NaQ™ ECL Substrate Kit (Cat#716).

SUPPORT

SUPPORT@GENUINBIOTECH.COM
TEL: +1-540-855-7041

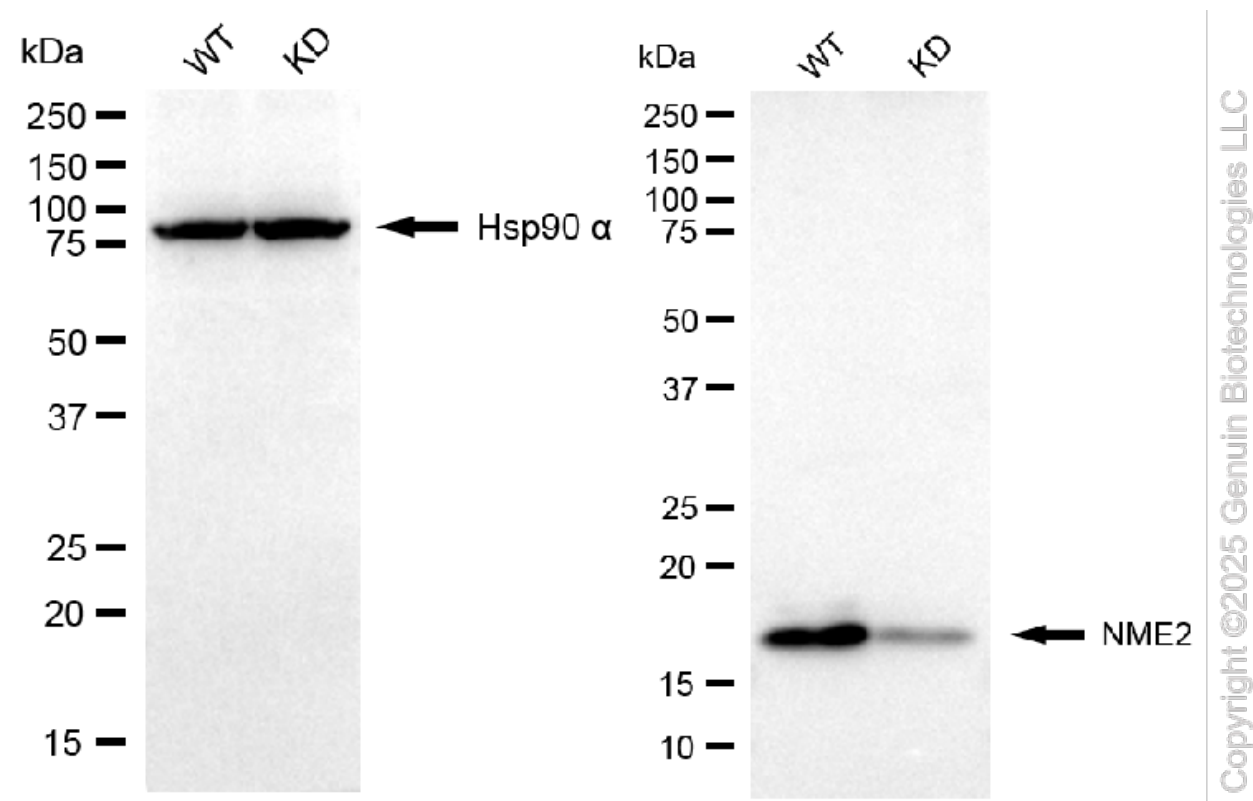
ORDERS

SALES@GENUINBIOTECH.COM
FAX: +1-540-855-7041

WWW.GENUINBIOTECH.COM

KD-Validated Anti-NME2 Recombinant Rabbit Monoclonal Antibody

PAGE 4



Western blotting analysis using anti-NME2 antibody (Cat#61642). NME2 expression in wild type (WT) and NME2 knockdown (KD) HSHC cells with 20 µg of total cell lysates. Hsp90 α serves as a loading control. The blot was incubated with anti-NME2 antibody (Cat#61642, 1:5,000) and HRP-conjugated goat anti-rabbit secondary antibody (Cat#201, 1:20,000) respectively. Image was developed using NaQ™ ECL Substrate Kit (Cat#716).

SUPPORT

SUPPORT@GENUINBIOTECH.COM
TEL: +1-540-855-7041

ORDERS

SALES@GENUINBIOTECH.COM
FAX: +1-540-855-7041

WWW.GENUINBIOTECH.COM