

# KD-Validated Anti-NELFB Recombinant Rabbit Monoclonal Antibody



**Catalog #: 61643**

## Aliases

NELFB; Negative Elongation Factor Complex Member B; NELF-B; Cofactor Of BRCA1; KIAA1182; COBRA1; Negative Elongation Factor B; Negative Elongation Factor Protein B

## Background

Gene Name: NELFB

NCBI Gene Entry: [25920](#)

UniProt Entry: [Q8WX92](#)

## Application Information

Molecular Weight: Predicted, 66 kDa; observed, 66 kDa

Clonality: Rabbit monoclonal antibody

Clone ID: 25GB3125

Species Reactivity: Human, mouse, rat

Applications Tested: Western blotting (WB), flow cytometry (FCM), immunocytochemistry (IC)

## Immunogen

A synthesized peptide derived from human NELFB

## Isotype

Rabbit IgG

## Storage Buffer

Supplied in PBS (pH 7.4) containing 50% glycerol, and 0.02% sodium azide.

## Storage

Store at -20 °C for one year.

## Recommended Dilutions

Western Blotting (WB): 1:1,000-1:5,000

Flow Cytometry (FCM): 1:2,000

Immunocytochemistry (IC): 1:100-1:1,000

**Note:** This product is for research use only.

## Validation Data

---

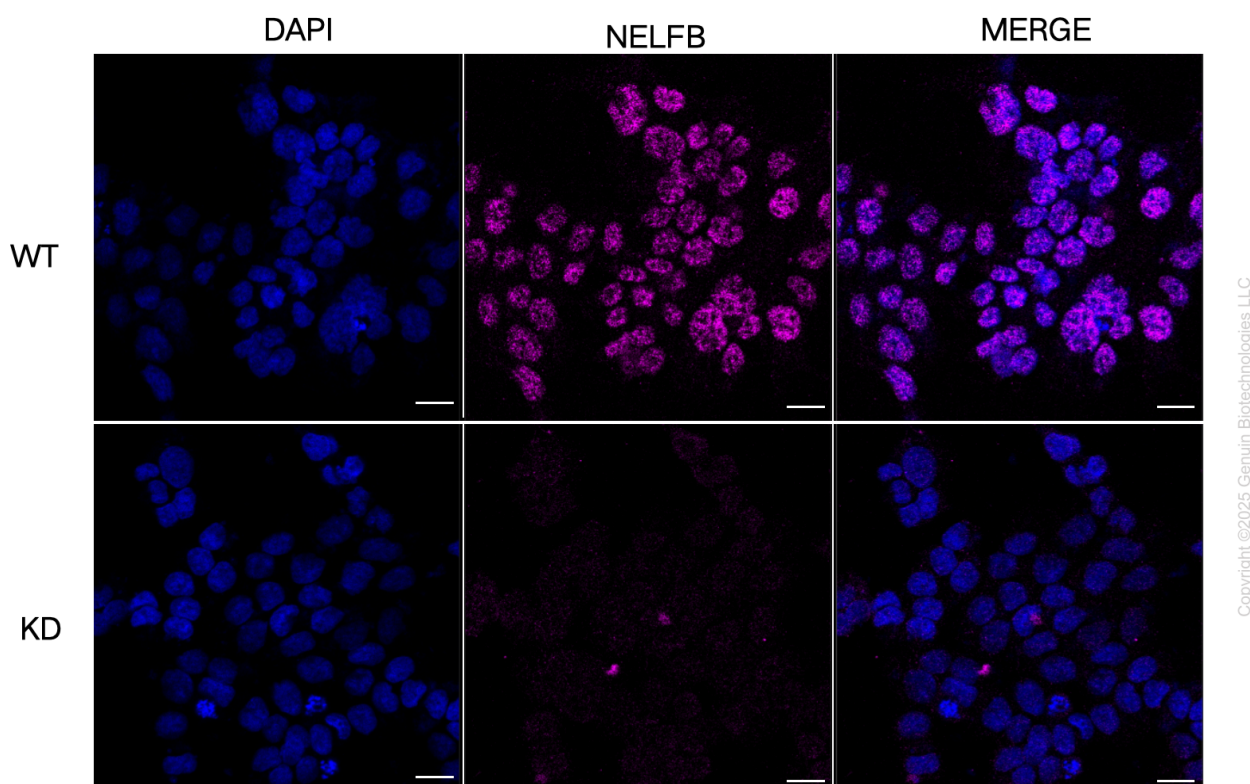
### SUPPORT

SUPPORT@GENUINBIOTECH.COM  
TEL: +1-540-855-7041

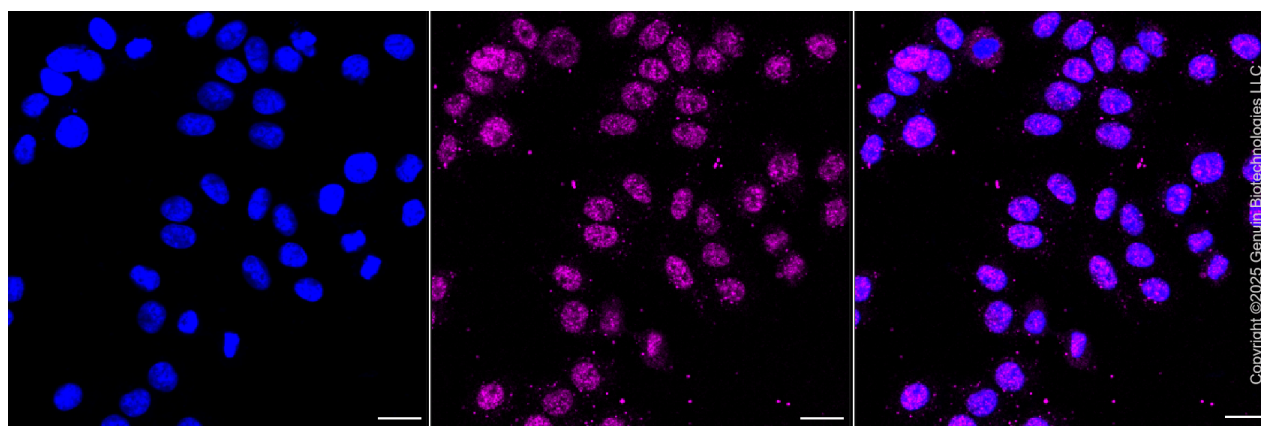
### ORDERS

SALES@GENUINBIOTECH.COM  
FAX: +1-540-855-7041

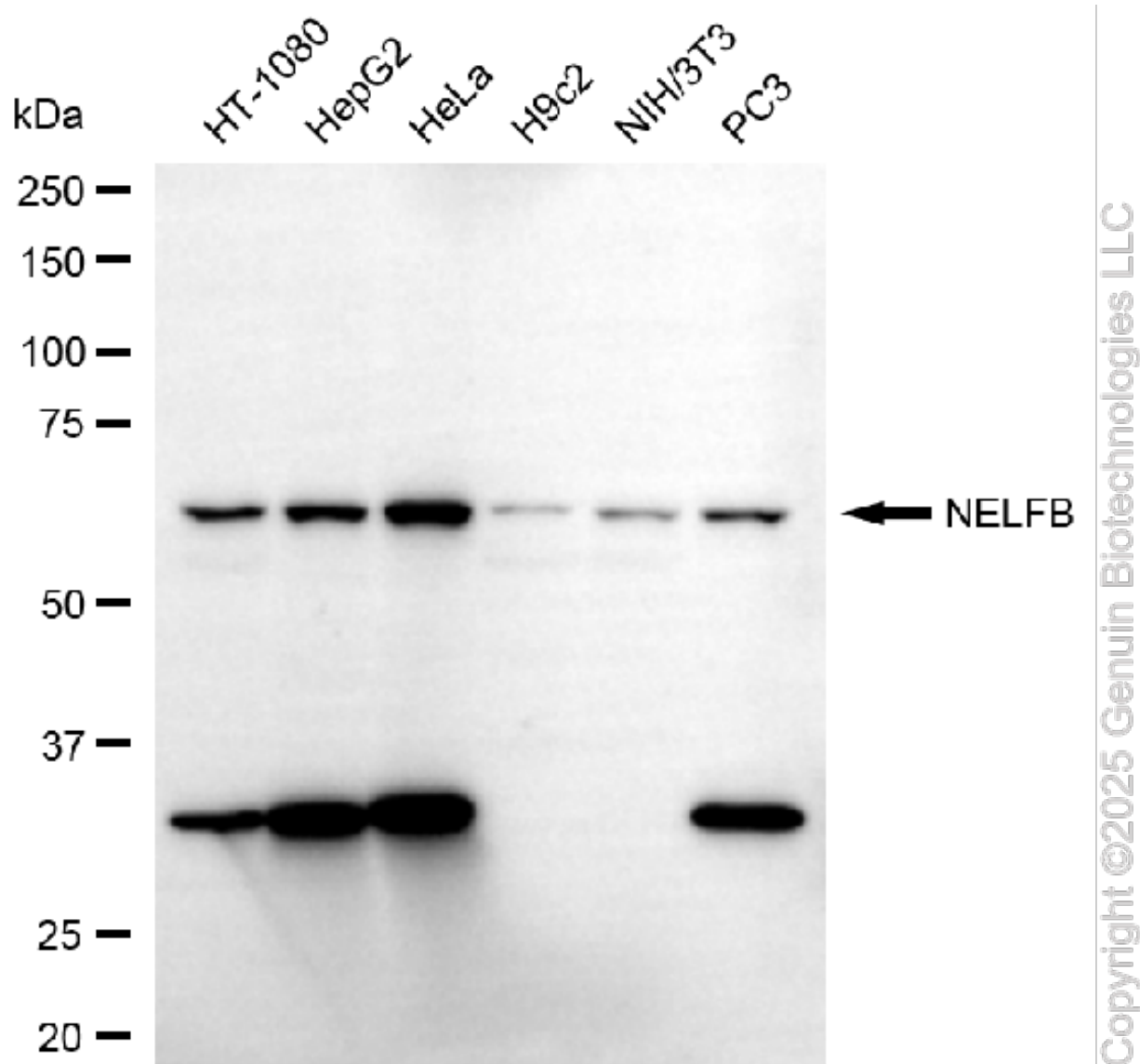
[WWW.GENUINBIOTECH.COM](http://WWW.GENUINBIOTECH.COM)



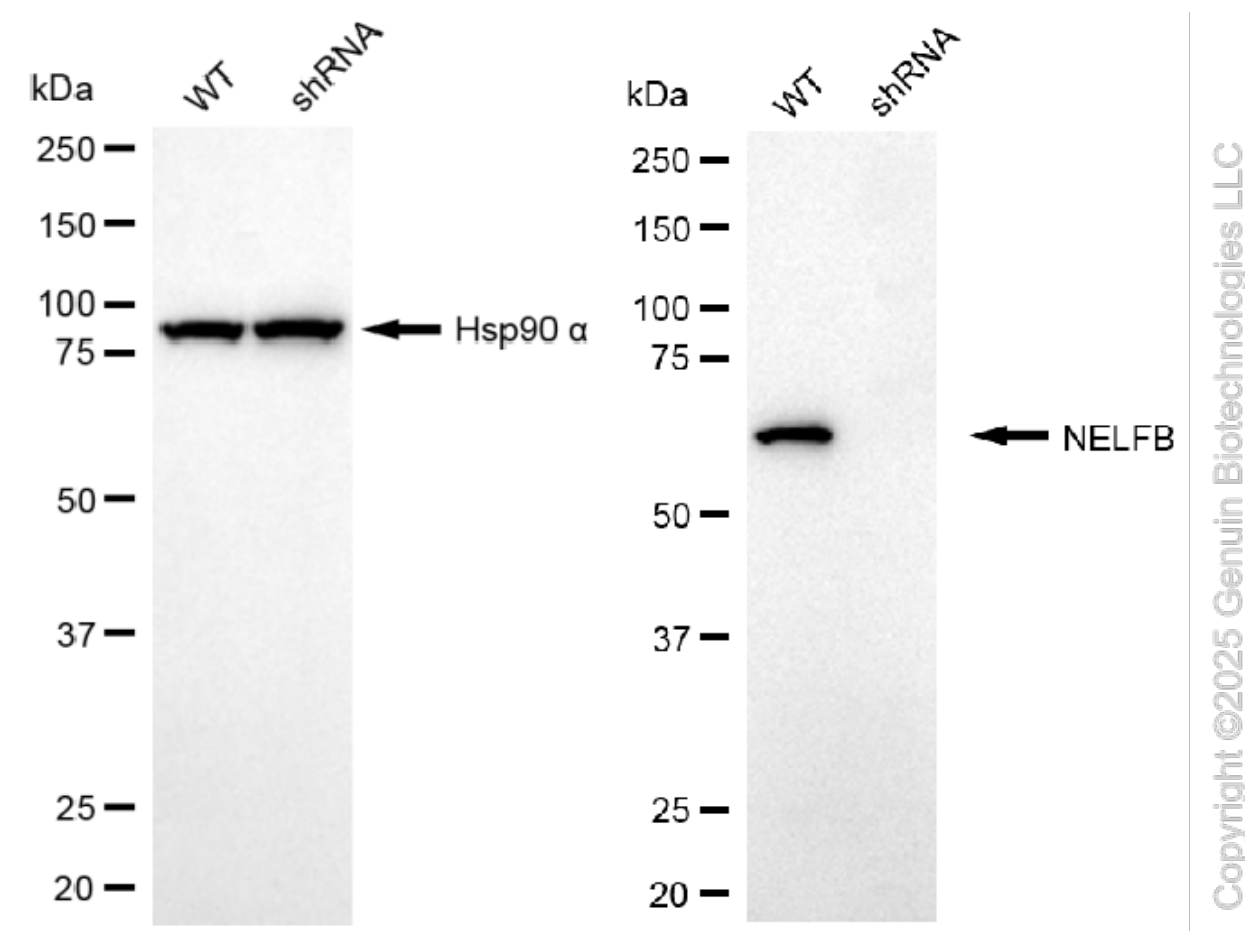
Immunocytochemical staining of HAP1 cells using anti-NELFB antibody (Cat#61643, 1:1,000), Top panel: wild-type (WT); Bottom panel: NELFB shRNA knockdown (KD). Nuclei were stained blue with DAPI; Acyl-CoA dehydrogenase short chain was stained magenta with Alexa Fluor® 647. Scale bar, 20 µm.



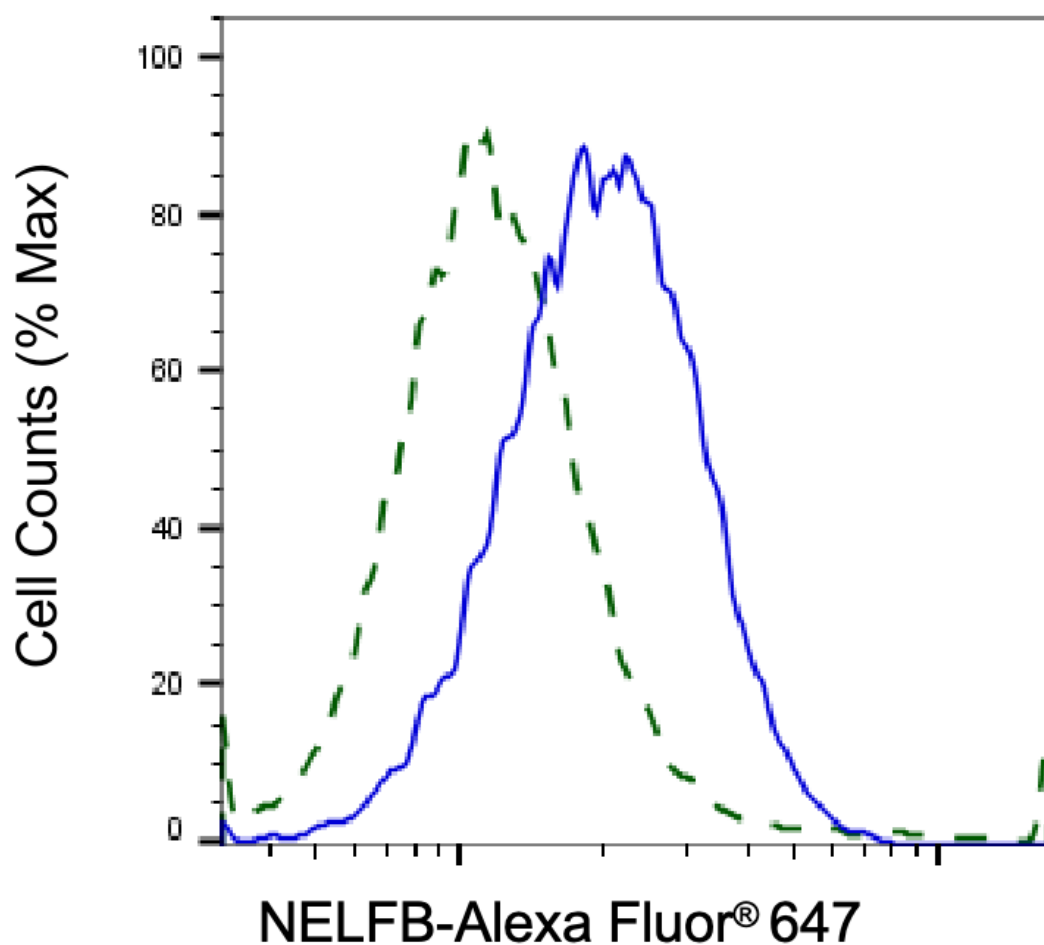
Immunocytochemical staining of HepG2 cells with anti-NELFB antibody (Cat#61643, 1:1,000). Nuclei were stained blue with DAPI; NELFB was stained magenta with Alexa Fluor® 647. Images were taken using Leica stellaris 5. Protein abundance based on laser Intensity and smart gain: Medium. Scale bar, 20 µm.



Western blotting analysis using anti-NELFB antibody (Cat#61643). Total cell lysates (30 µg) from various cell lines were loaded and separated by SDS-PAGE. The blot was incubated with anti-NELFB antibody (Cat#61643, 1:5,000) and HRP-conjugated goat anti-rabbit secondary antibody (Cat#201, 1:20,000) respectively. Image was developed using FeQ™ ECL Substrate Kit (Cat#226).



Western blotting analysis using anti-NELFB antibody (Cat#61643). NELFB expression in wild-type (WT) and NELFB shRNA knockdown (KD) HSHC cells with 20 µg of total cell lysates. Hsp90 α serves as a loading control. The blot was incubated with anti-NELFB antibody (Cat#61643, 1:5,000) and HRP-conjugated goat anti-rabbit secondary antibody (Cat#201, 1:20,000) respectively. Image was developed using FeQ™ ECL Substrate Kit (Cat#226).



Copyright ©2025 Genuin Biotechnologies LLC

Validation of NELFB knockdown using flow cytometry. Wild-type(WT, Blue) and knockdown(KD, Green) HSHC cells were stained with anti-NELFB antibody (Cat#61643, 1:2,000) and analyzed using BD flow cytometer.