

KD-Validated Anti-Phospho-eIF4B (S406) Recombinant Rabbit Monoclonal Antibody



Catalog #: 61645

Aliases

EIF4B; Eukaryotic Translation Initiation Factor 4B; EIF-4B; PRO1843

Background

Gene Name: eIF4B

NCBI Gene Entry: [1975](#)

UniProt Entry: [P23588](#)

Application Information

Molecular Weight: Predicted, 69 kDa, observed, 75 kDa

Clonality: Rabbit monoclonal antibody

Clone ID: 23GB3905

Species Reactivity: Human, mouse, rat

Applications Tested: Western blotting (WB), flow cytometry (FCM), immunocytochemistry (IC)

Immunogen

A synthesized peptide derived from human Phospho-eIF4B (S406)

Isotype

Rabbit IgG

Storage Buffer

Supplied in PBS (pH 7.4) containing 50% glycerol, and 0.02% sodium azide.

Storage

Store at -20 °C for one year.

Recommended Dilutions

Western Blotting (WB): 1:1,000-1:5,000

Flow Cytometry (FCM): 1:2,000

Immunocytochemistry (IC): 1:100-1:1,000

Note: This product is for research use only.

Validation Data

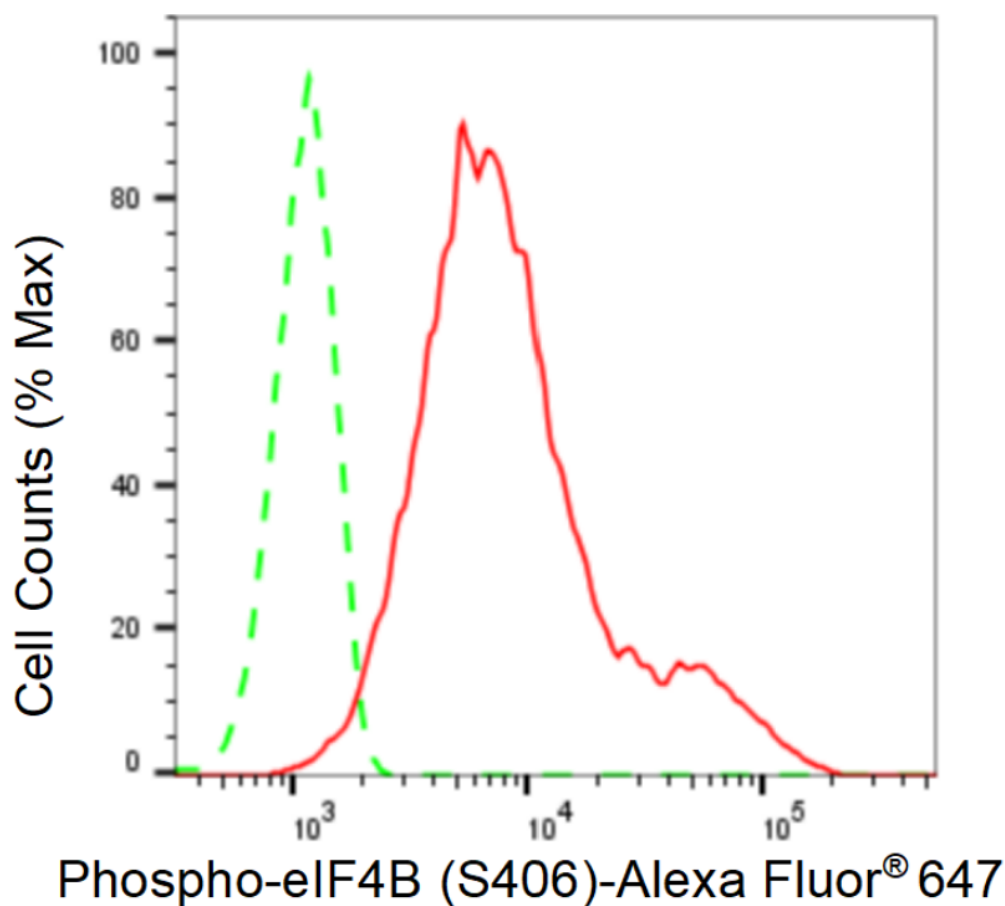
SUPPORT

SUPPORT@GENUINBIOTECH.COM
TEL: +1-540-855-7041

ORDERS

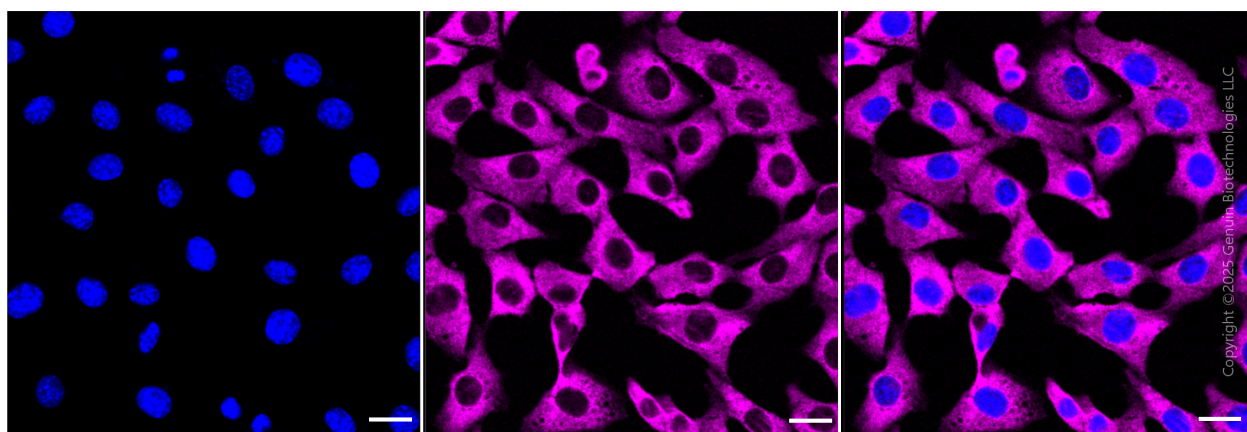
SALES@GENUINBIOTECH.COM
FAX: +1-540-855-7041

WWW.GENUINBIOTECH.COM



Copyright ©2024 Genuin Biotechnologies LLC

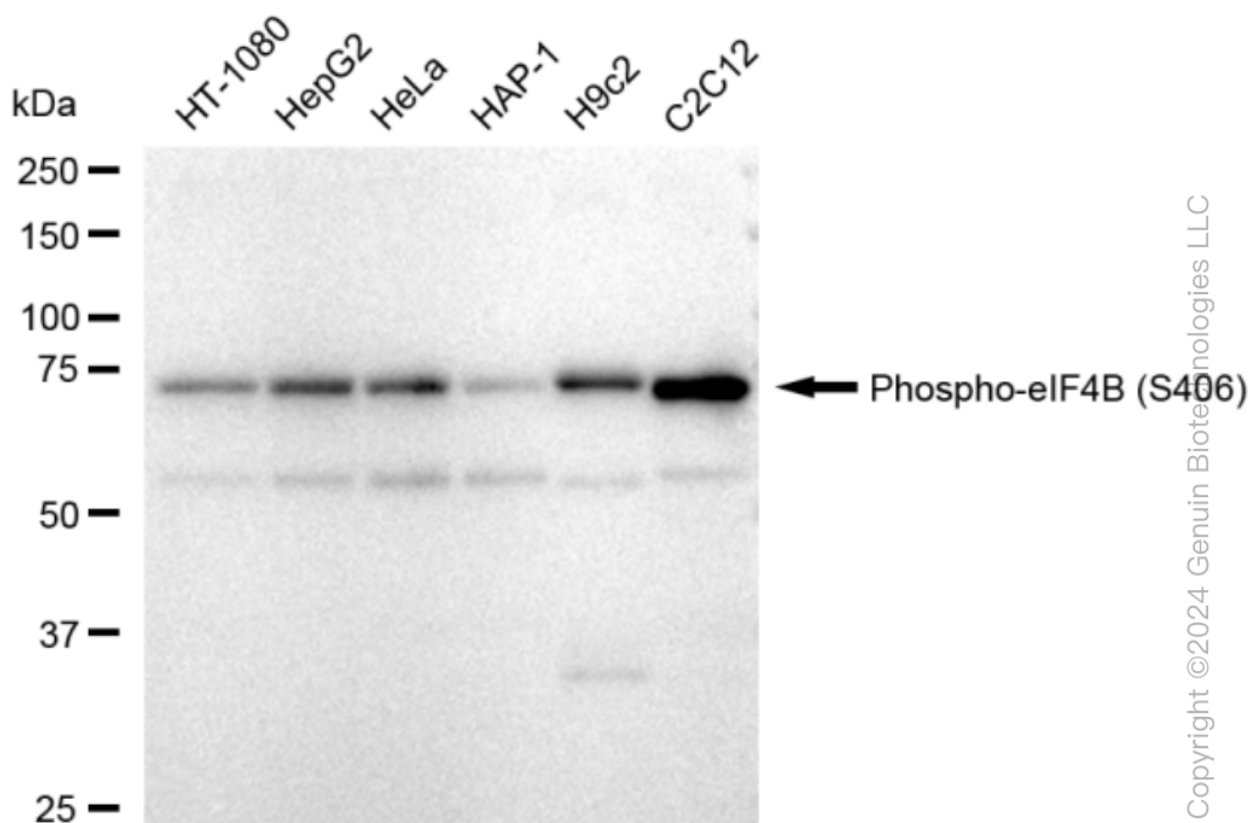
Flow cytometric analysis of Phospho-eIF4B (S406) expression in C2C12 cells using Phospho-eIF4B (S406) antibody (61645, 1:2,000). Green, isotype control; red, Phospho-eIF4B (S406).



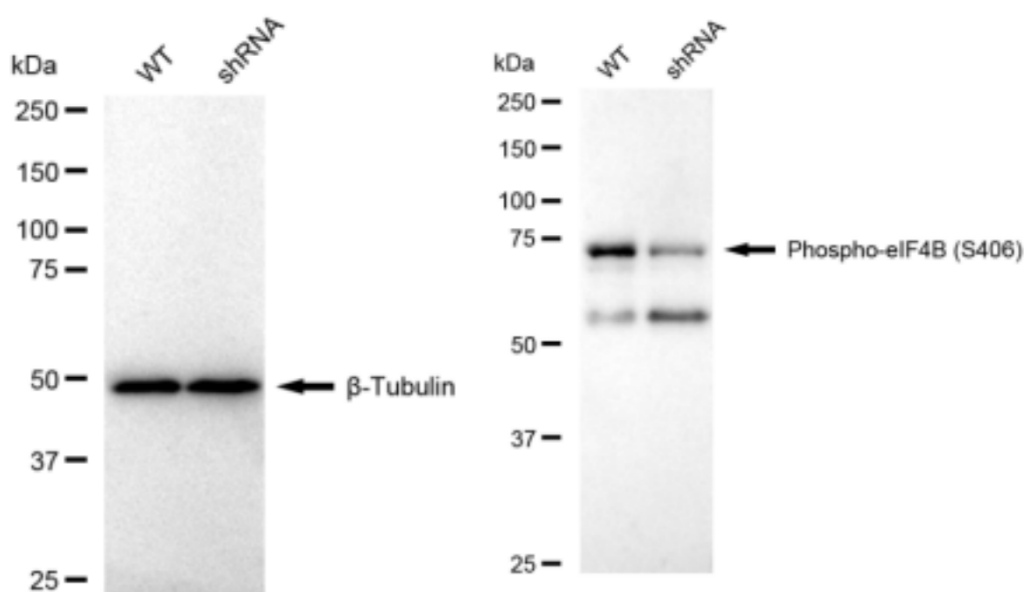
Immunocytochemical staining of HepG2 cells with anti-Phospho-eIF4B (S406) antibody (Cat#61645, 1:1,000). Nuclei were stained blue with anti-DAPI; Phospho-eIF4B (S406) was stained magenta with Alexa Fluor® 647. Images were taken using Leica stellaris 5. Protein abundance based on laser Intensity and smart gain: Medium. Scale bar, 20 µm.

KD-Validated Anti-Phospho-eIF4B (S406) Recombinant Rabbit Monoclonal Antibody

PAGE 3



Western blotting analysis using anti-Phospho-eIF4B (S406) antibody (Cat#61645). Total cell lysates (30 µg) from various cell lines were loaded and separated by SDS-PAGE. The blot was incubated with anti-Phospho-eIF4B (S406) antibody (Cat#61645, 1:5,000) and HRP-conjugated goat anti-rabbit secondary antibody (Cat#201, 1:20,000) respectively. Image was developed using FeQ™ ECL Substrate Kit (Cat#226).



SUPPORT

SUPPORT@GENUINBIOTECH.COM
TEL: +1-540-855-7041

ORDERS

SALES@GENUINBIOTECH.COM
FAX: +1-540-855-7041

WWW.GENUINBIOTECH.COM

KD-Validated Anti-Phospho-eIF4B (S406) Recombinant Rabbit Monoclonal Antibody

PAGE 4

Western blotting analysis using anti-Phospho-eIF4B (S406) antibody (Cat#61645). Phospho-eIF4B (S406) expression in wild type (WT) and Phospho-eIF4B (S406) shRNA knockdown (KD) HeLa cells with 30 µg of total cell lysates. β-Tubulin serves as a loading control. The blot was incubated with anti-Phospho-eIF4B (S406) antibody (Cat#61645, 1:5,000) and HRP-conjugated goat anti-rabbit secondary antibody (Cat#201, 1:20,000) respectively. Image was developed using FeQ™ ECL Substrate Kit (Cat#226).

SUPPORT

SUPPORT@GENUINBIOTECH.COM
TEL: +1-540-855-7041

ORDERS

SALES@GENUINBIOTECH.COM
FAX: +1-540-855-7041

WWW.GENUINBIOTECH.COM