

KD-Validated Anti-Amyloid beta precursor like protein 2 Recombinant Rabbit Monoclonal



Catalog #: 61646

Aliases

APLP2; Amyloid Beta Precursor Like Protein 2; APPH 2; Amyloid Beta (A4) Precursor-Like Protein 2; APPL2; Sperm Membrane Protein YWK-II; CDEI Box-Binding Protein; APLP-2; CDEBP; Amyloid Precursor Protein Homolog HSD-2; Testicular Tissue Protein Li 23; Amyloid Protein Homolog; Amyloid-Like Protein 2

Background

Gene Name: APLP2

NCBI Gene Entry: [334](#)

UniProt Entry: [Q06481](#)

Application Information

Molecular Weight: Predicted, 87 kDa, observed, 87-140 kDa

Clonality: Rabbit monoclonal antibody

Clone ID: 23GB1595

Species Reactivity: Human

Applications Tested: Western blotting (WB), flow cytometry (FCM), immunocytochemistry (IC)

Immunogen

A synthesized peptide derived from human APLP2

Isotype

Rabbit IgG

Storage Buffer

Supplied in PBS (pH 7.4) containing 50% glycerol, and 0.02% sodium azide.

Storage

Store at -20 °C for one year.

Recommended Dilutions

Western Blotting (WB): 1:1,000-1:5,000

Flow Cytometry (FCM): 1:2,000

Immunocytochemistry (IC): 1:100-1:1,000

SUPPORT

SUPPORT@GENUINBIOTECH.COM
TEL: +1-540-855-7041

ORDERS

SALES@GENUINBIOTECH.COM
FAX: +1-540-855-7041

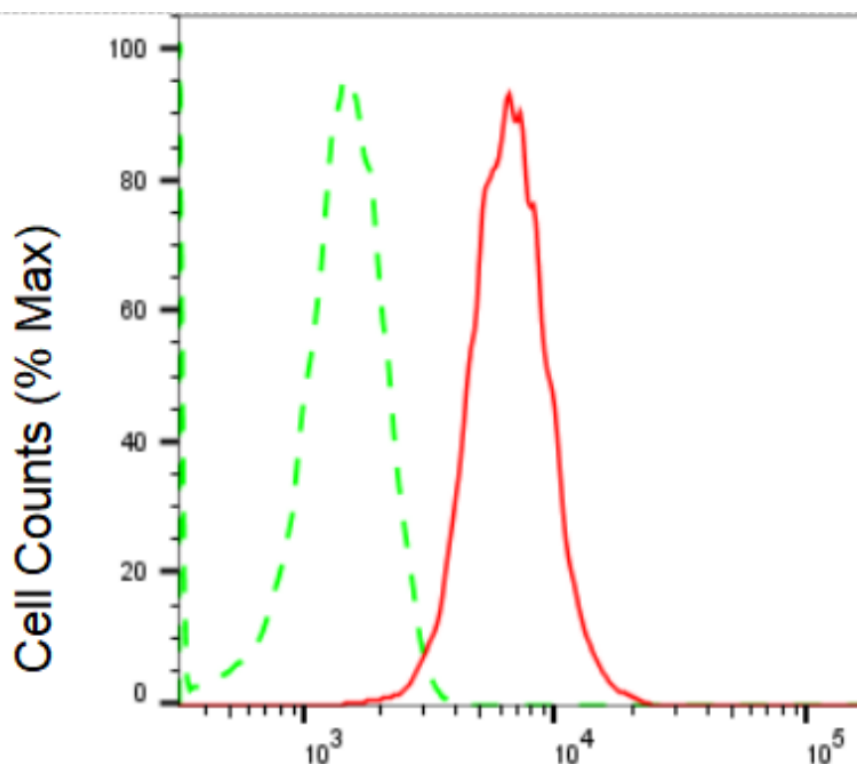
WWW.GENUINBIOTECH.COM

KD-Validated Anti-Amyloid beta precursor like protein 2 Recombinant Rabbit Monoclonal

PAGE 2

Note: This product is for research use only.

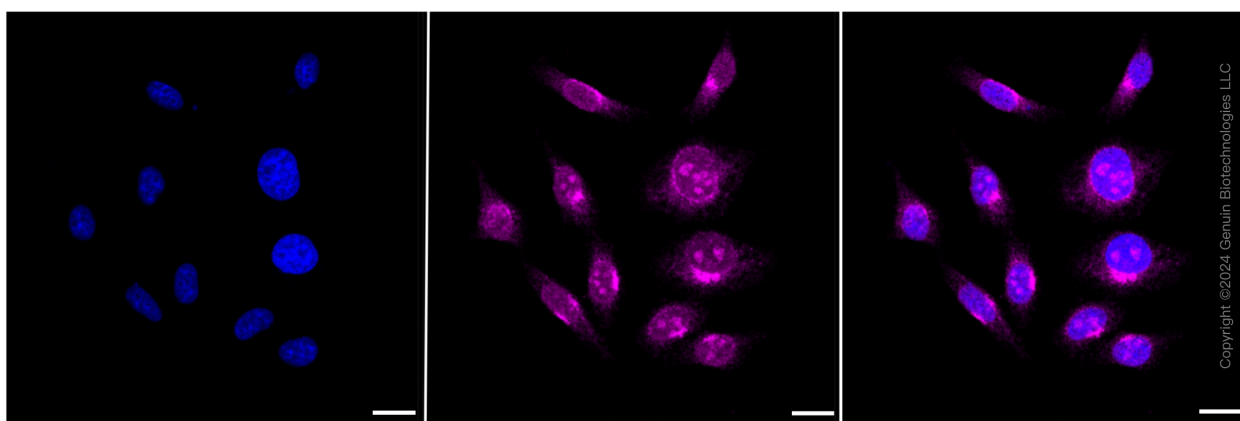
Validation Data



Copyright ©2024 Genuin Biotechnologies LLC

Amyloid beta precursor like protein 2-Alexa Fluor® 647

Flow cytometric analysis of Amyloid beta precursor like protein 2 expression in HepG2 cells using Amyloid beta precursor like protein 2 antibody (Cat#61646, 1:2,000). Green, isotype control; red, Amyloid beta precursor like protein 2.



Copyright ©2024 Genuin Biotechnologies LLC

Immunocytochemical staining of HepG2 cells with Amyloid beta precursor like protein 2 antibody (Cat#61646, 1:1,000). Nuclei were stained blue with DAPI; Amyloid beta precursor like protein 2 was stained magenta with Alexa Fluor® 647. Images were taken using Leica stellaris 5. Protein

SUPPORT

SUPPORT@GENUINBIOTECH.COM
TEL: +1-540-855-7041

ORDERS

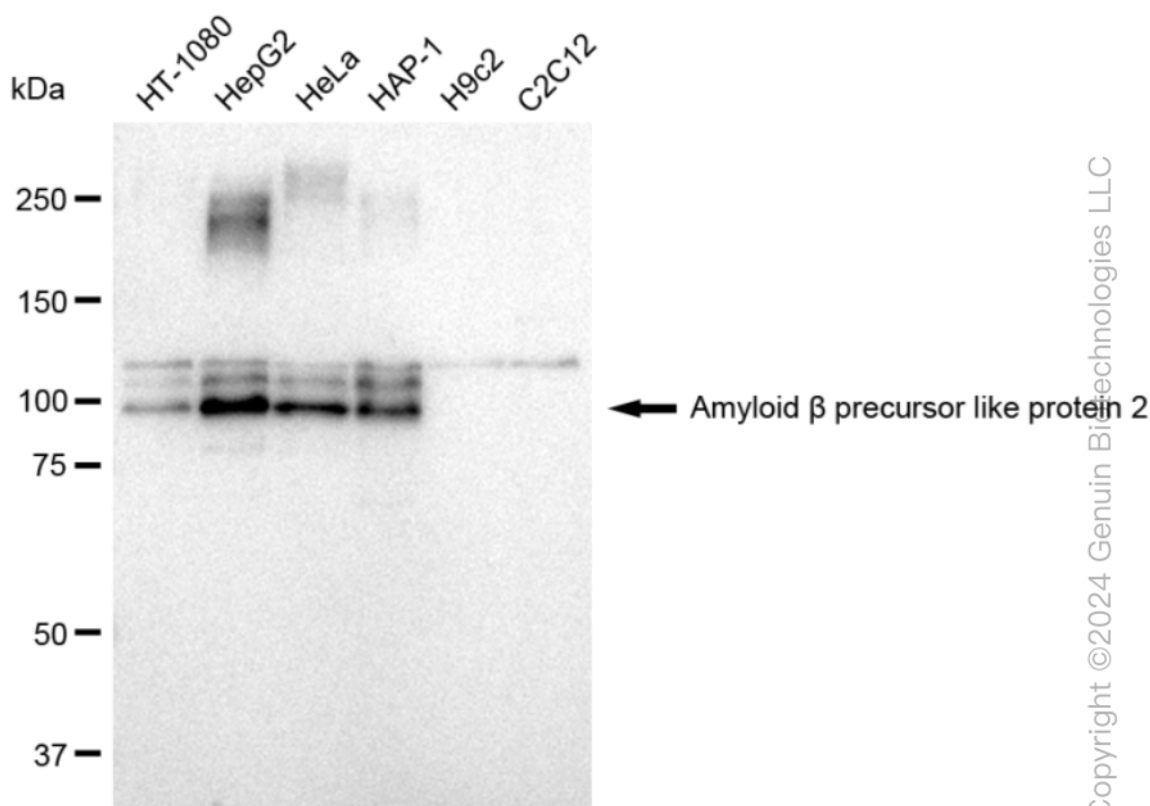
SALES@GENUINBIOTECH.COM
FAX: +1-540-855-7041

WWW.GENUINBIOTECH.COM

KD-Validated Anti-Amyloid beta precursor like protein 2 Recombinant Rabbit Monoclonal

PAGE 3

abundance based on laser Intensity and smart gain: High. Scale bar: 20 μ m.



Western blotting analysis using anti-Amyloid beta precursor like protein 2 antibody (Cat#61646). Total cell lysates (30 μ g) from various cell lines were loaded and separated by SDS-PAGE. The blot was incubated with anti-Amyloid beta precursor like protein 2 antibody (Cat#61646, 1:5,000) and HRP-conjugated goat anti-rabbit secondary antibody (Cat#201, 1:20,000) respectively. Image was developed using FeQ™ ECL Substrate Kit (Cat#226).

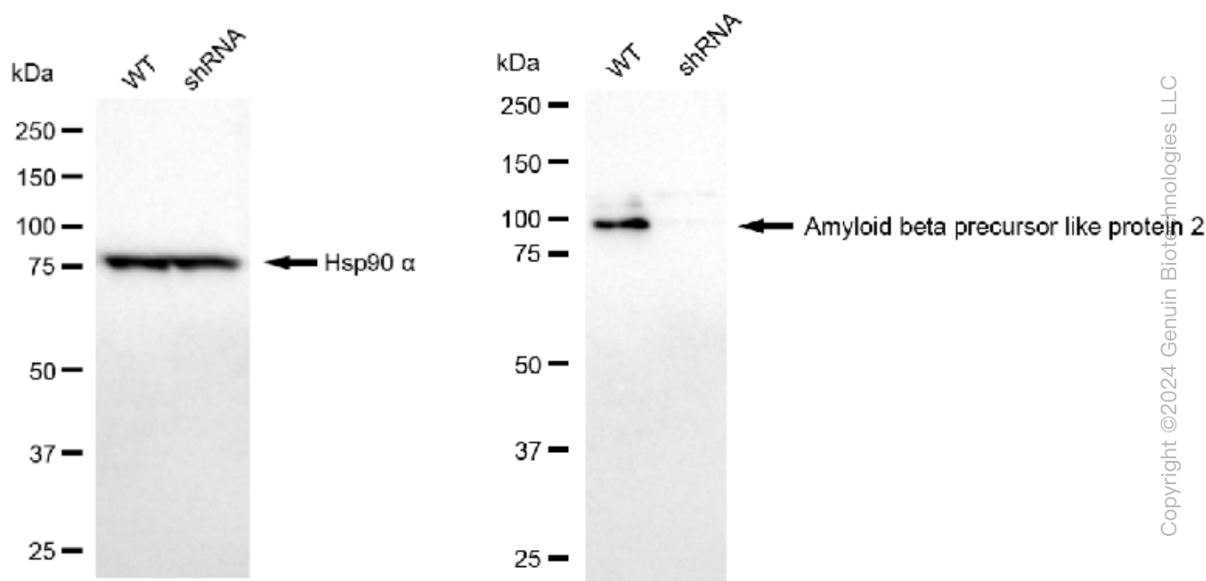
SUPPORT

SUPPORT@GENUINBIOTECH.COM
TEL: +1-540-855-7041

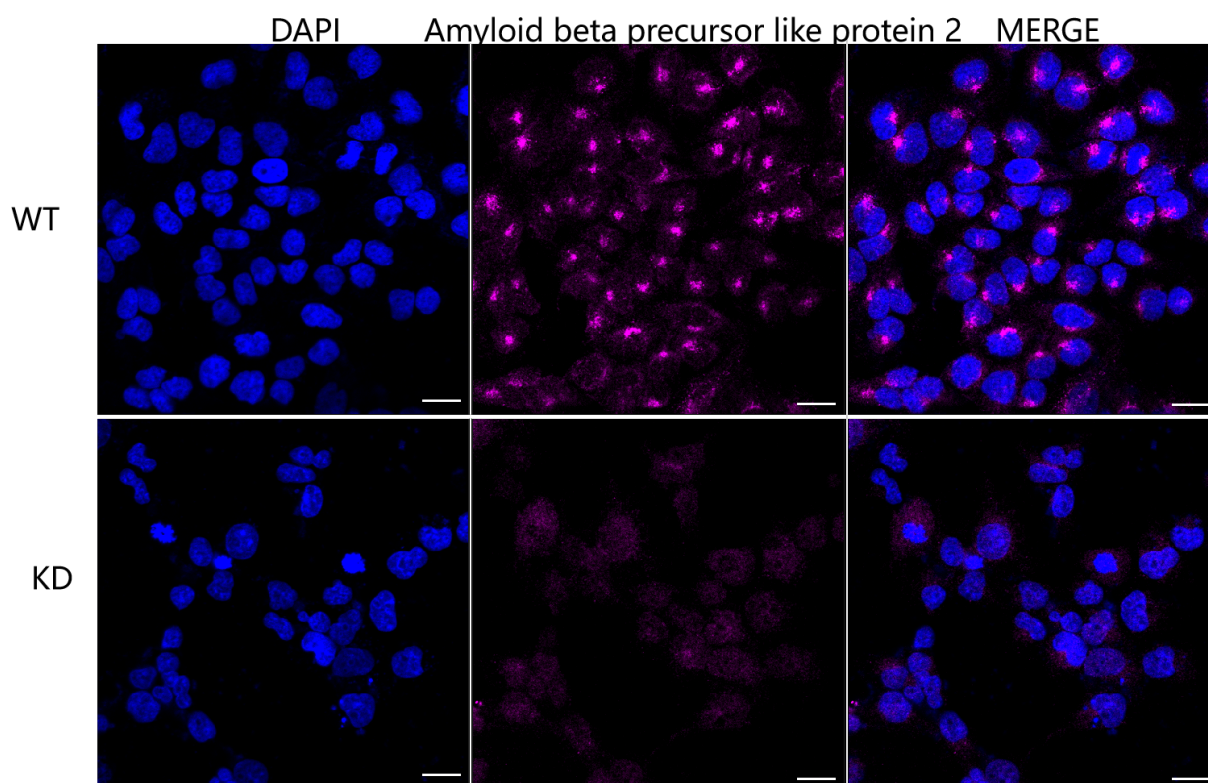
ORDERS

SALES@GENUINBIOTECH.COM
FAX: +1-540-855-7041

WWW.GENUINBIOTECH.COM



Western blotting analysis using anti-Amyloid beta precursor like protein 2 antibody (Cat#61646). Amyloid beta precursor like protein 2 expression in wild type (WT) and amyloid beta precursor like protein 2 shRNA knockdown (KD) Hela cells with 30 µg of total cell lysates. β-Tubulin serves as a loading control. The blot was incubated with anti-Amyloid beta precursor like protein 2 antibody (Cat#61646, 1:5,000) and HRP-conjugated goat anti-rabbit secondary antibody (Cat#201, 1:20,000) respectively. Image was developed using FeQ™ ECL Substrate Kit (Cat#226).



KD-Validated Anti-Amyloid beta precursor like protein 2 Recombinant Rabbit Monoclonal

PAGE 5

Immunocytochemical staining of HeLa cells using anti-Amyloid beta precursor like protein 2 antibody (Cat#61646, 1:1,000), Top panel: wild-type (WT); Bottom panel: Amyloid beta precursor like protein 2 shRNA knockdown (KD). Nuclei were stained blue with DAPI; Amyloid beta precursor like protein 2 was stained magenta with Alexa Fluor® 647. Scale bar, 20 µm. Permeabilization: Triton.

SUPPORT

SUPPORT@GENUINBIOTECH.COM
TEL: +1-540-855-7041

ORDERS

SALES@GENUINBIOTECH.COM
FAX: +1-540-855-7041

WWW.GENUINBIOTECH.COM