

# KD-Validated Anti-ACADM Recombinant Rabbit Monoclonal Antibody



**Catalog #: 61650**

## Aliases

ACADM; Acyl-CoA Dehydrogenase Medium Chain 2 3 5; MCAD; ACAD1; Medium-Chain Specific Acyl-CoA Dehydrogenase, Mitochondrial; Acyl-Coenzyme A Dehydrogenase, C-4 To C-12 Straight Chain; Medium-Chain Acyl-CoA Dehydrogenase; Acyl-CoA Dehydrogenase, C-4 To C-12 Straight Chain; Medium Chain Acyl-CoA Dehydrogenase; Testicular Tissue Protein Li 7; EC 1.3.99.3; EC 1.3.8.7; EC 1.3.99

## Background

Gene Name: ACADM

NCBI Gene Entry: [34](#)

UniProt Entry: [P11310](#)

## Application Information

Molecular Weight: Predicted, 47 kDa, observed, 40 kDa

Clonality: Rabbit monoclonal antibody

Clone ID: 25GB3145

Species Reactivity: Human, mouse, rat

Applications Tested: Western blotting (WB), flow cytometry (FCM), immunocytochemistry (IC)

## Immunogen

A synthesized peptide derived from human ACADM

## Isotype

Rabbit IgG

## Storage Buffer

Supplied in PBS (pH 7.4) containing 50% glycerol, and 0.02% sodium azide.

## Storage

Store at -20 °C for one year.

## Recommended Dilutions

Western blotting (WB): 1:1,000-1:5,000

Flow Cytometry (FCM): 1:2,000

Immunocytochemistry (IC): 1:100-1:1,000

---

### SUPPORT

SUPPORT@GENUINBIOTECH.COM  
TEL: +1-540-855-7041

### ORDERS

SALES@GENUINBIOTECH.COM  
FAX: +1-540-855-7041

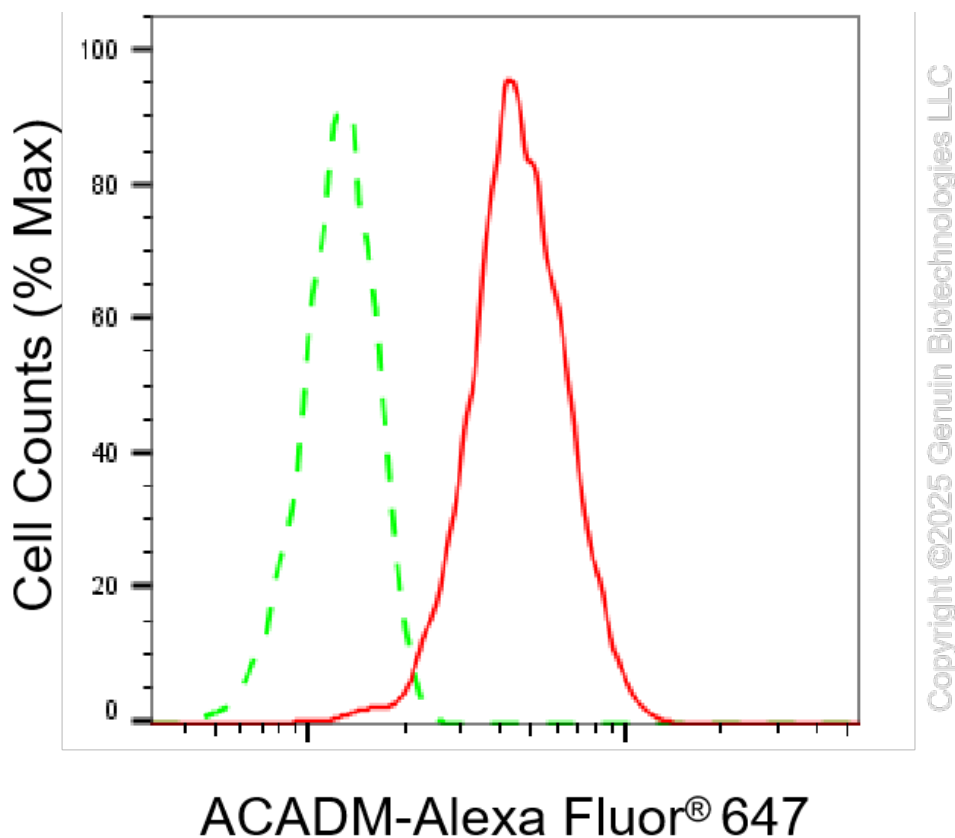
[WWW.GENUINBIOTECH.COM](http://WWW.GENUINBIOTECH.COM)

## KD-Validated Anti-ACADM Recombinant Rabbit Monoclonal Antibody

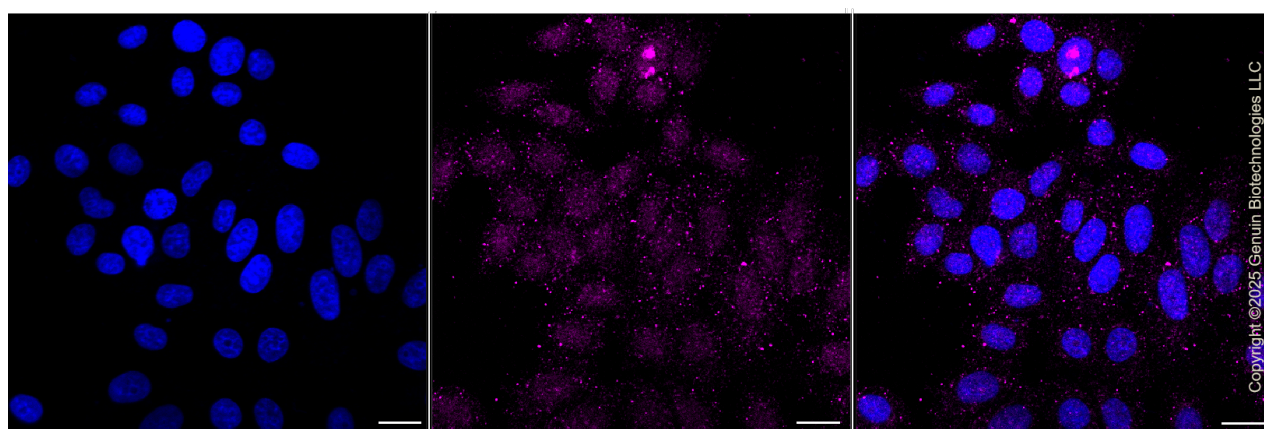
PAGE 2

**Note:** This product is for research use only.

### Validation Data



Flow cytometric analysis of ACADM expression in HepG2 cells using anti-ACADM antibody (Cat#61650, 1:2,000). Green, isotype control; red, ACADM.



Immunocytochemical staining of HepG2 cells with anti-ACADM antibody (Cat#61650, 1:1,000). Nuclei were stained blue with DAPI; ACADM was stained magenta with Alexa Fluor® 647. Images were taken using Leica stellaris 5. Protein abundance based on laser Intensity and smart gain: Medium. Scale bar, 20 µm.

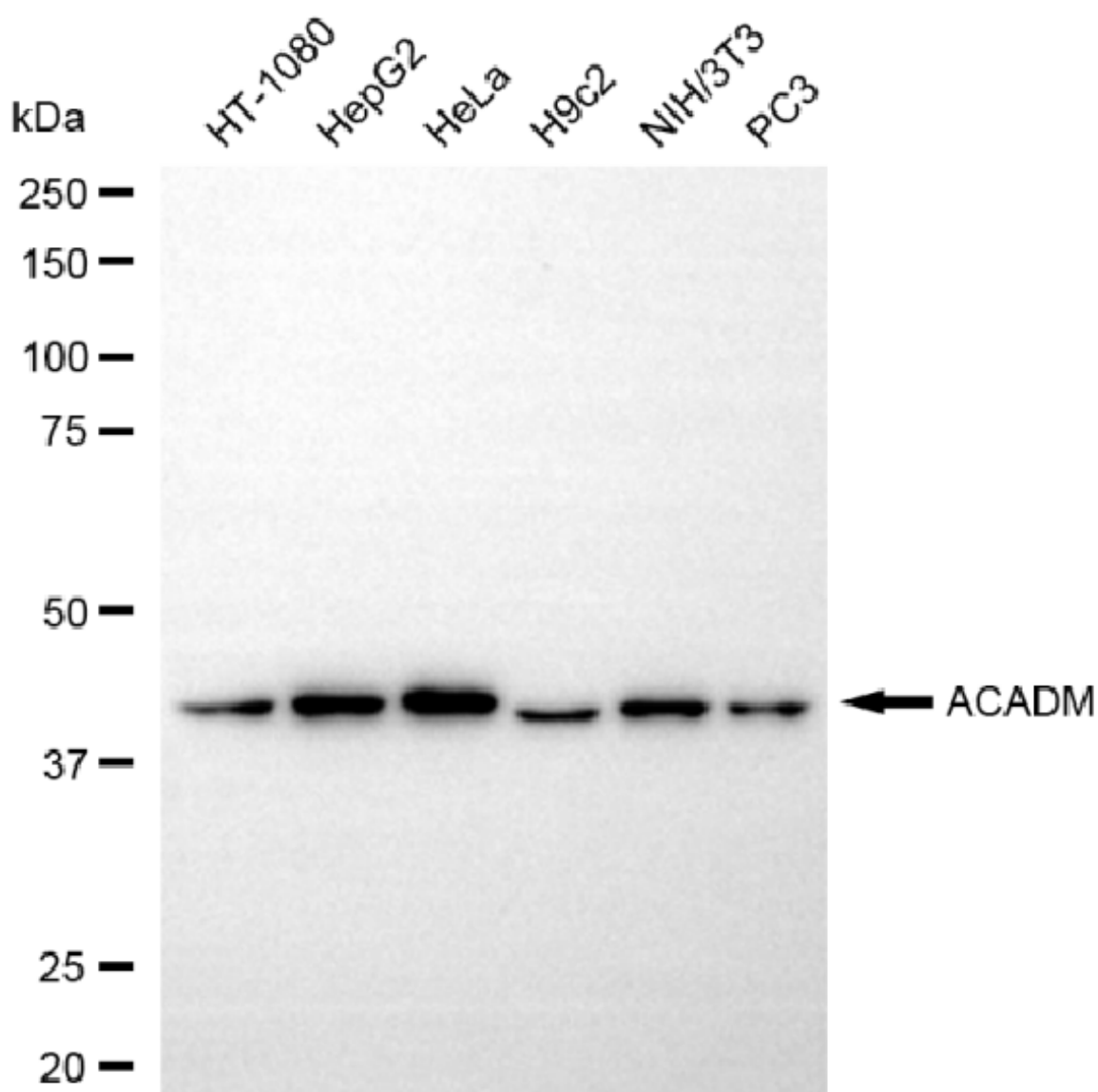
#### SUPPORT

SUPPORT@GENUINBIOTECH.COM  
TEL: +1-540-855-7041

#### ORDERS

SALES@GENUINBIOTECH.COM  
FAX: +1-540-855-7041

[WWW.GENUINBIOTECH.COM](http://WWW.GENUINBIOTECH.COM)

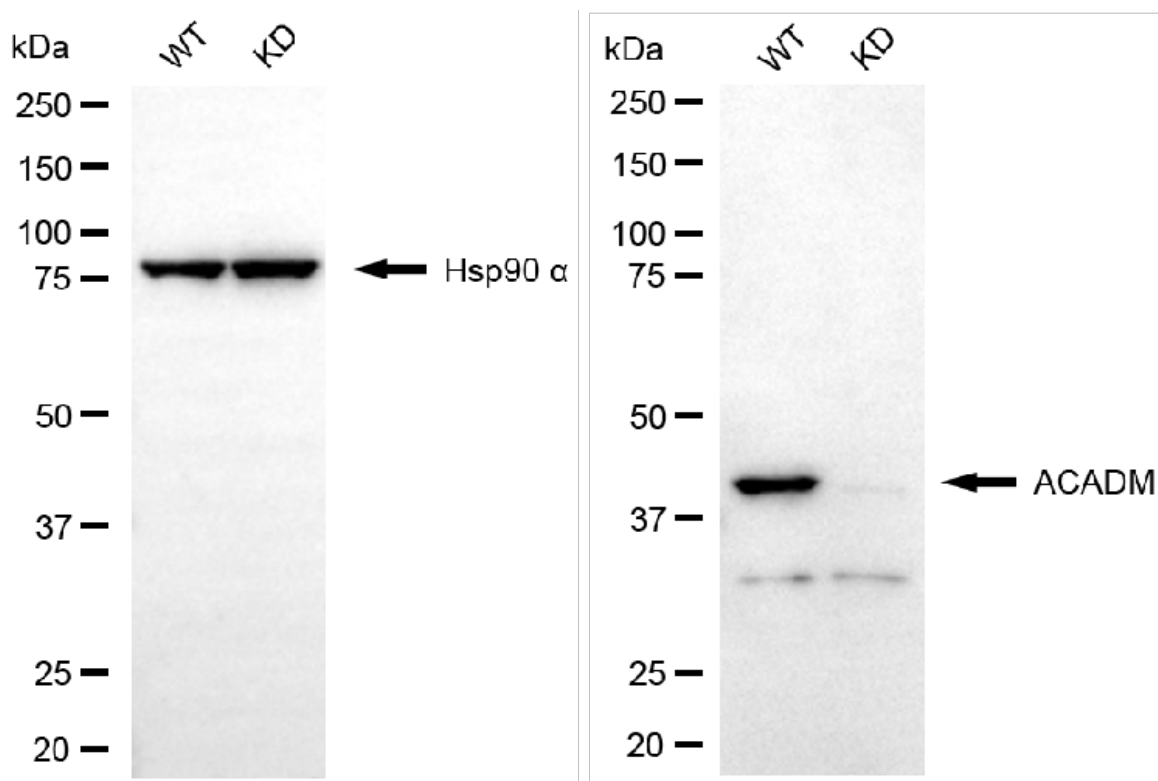


Copyright ©2025 Genuin Biotechnologies LLC

Western blotting analysis using anti-ACADM antibody (Cat#61650). Total cell lysates (30  $\mu$ g) from various cell lines were loaded and separated by SDS-PAGE. The blot was incubated with anti-ACADM antibody (Cat#61650, 1:5,000) and HRP-conjugated goat anti-rabbit secondary antibody (Cat#201, 1:20,000) respectively. Image was developed using NaQ™ ECL Substrate Kit (Cat#716).

## KD-Validated Anti-ACADM Recombinant Rabbit Monoclonal Antibody

PAGE 4



Western blotting analysis using anti-ACADM antibody (Cat#61650). ACADM expression in wild type (WT) and ACADM knockdown (KD) 293T cells with 20  $\mu$ g of total cell lysates. Hsp90  $\alpha$  serves as a loading control. The blot was incubated with anti-ACADM antibody (Cat#61650, 1:5,000) and HRP-conjugated goat anti-rabbit secondary antibody (Cat#201, 1:20,000) respectively. Image was developed using NaQ™ ECL Substrate Kit (Cat#716).

### SUPPORT

SUPPORT@GENUINBIOTECH.COM  
TEL: +1-540-855-7041

### ORDERS

SALES@GENUINBIOTECH.COM  
FAX: +1-540-855-7041

[WWW.GENUINBIOTECH.COM](http://WWW.GENUINBIOTECH.COM)