

KD-Validated Anti-Phosphogluconate Dehydrogenase Recombinant Rabbit



Catalog #: 61656

Aliases

PGD; Phosphogluconate Dehydrogenase; 6-Phosphogluconate Dehydrogenase, Decarboxylating; EC 1.1.1.44; 6PGD; PGDH

Background

Gene Name: PGD

NCBI Gene Entry: [5226](#)

UniProt Entry: [P52209](#)

Application Information

Molecular Weight: Predicted, 53 kDa, observed, 45 kDa

Clonality: Rabbit monoclonal antibody

Clone ID: 25GB3170

Species Reactivity: Human, mouse, rat

Applications Tested: Western blotting (WB), flow cytometry (FCM), immunocytochemistry (IC)

Immunogen

A synthesized peptide derived from human PGD

Isotype

Rabbit IgG

Storage Buffer

Supplied in PBS (pH 7.4) containing 50% glycerol, and 0.02% sodium azide.

Storage

Store at -20 °C for one year.

Recommended Dilutions

Western blotting (WB): 1:1,000-1:5,000

Flow Cytometry (FCM): 1:2,000

Immunocytochemistry (IC): 1:100-1:1,000

Note: This product is for research use only.

Validation Data

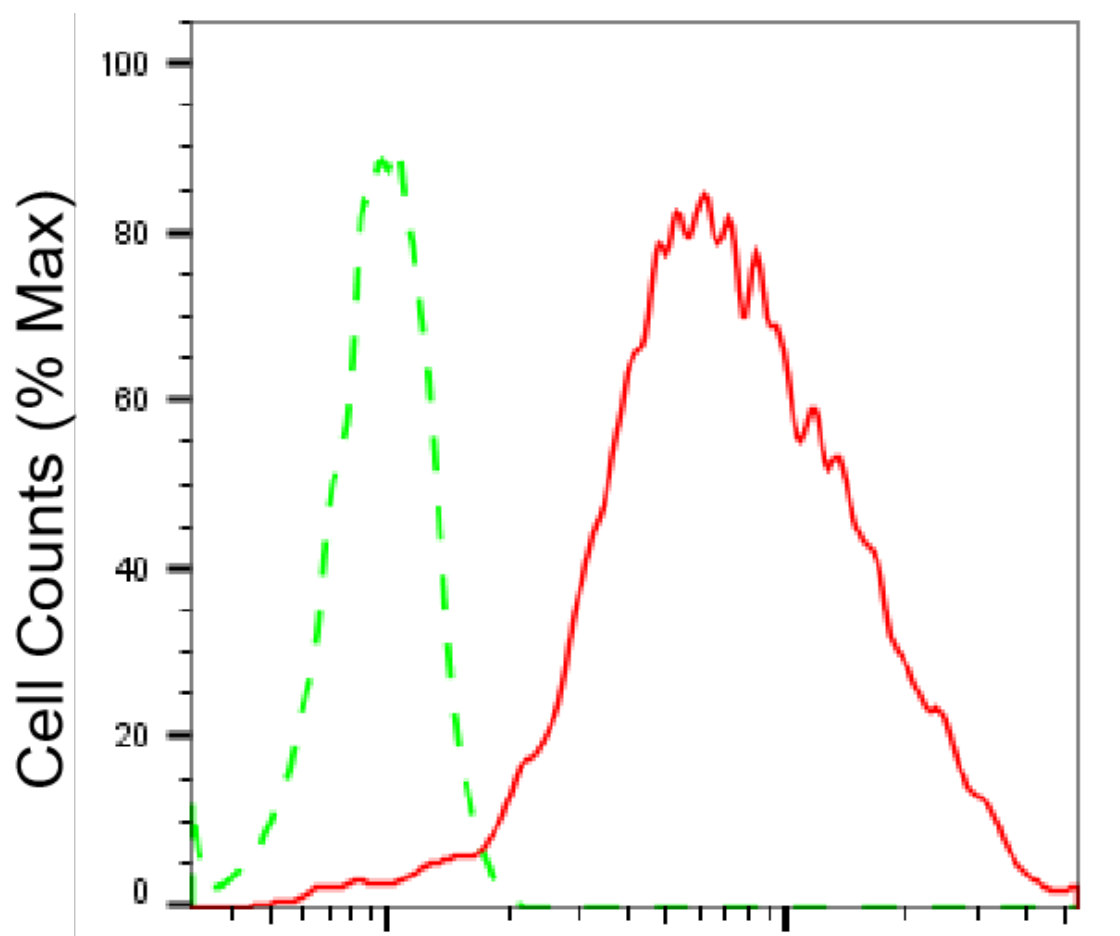
SUPPORT

SUPPORT@GENUINBIOTECH.COM
TEL: +1-540-855-7041

ORDERS

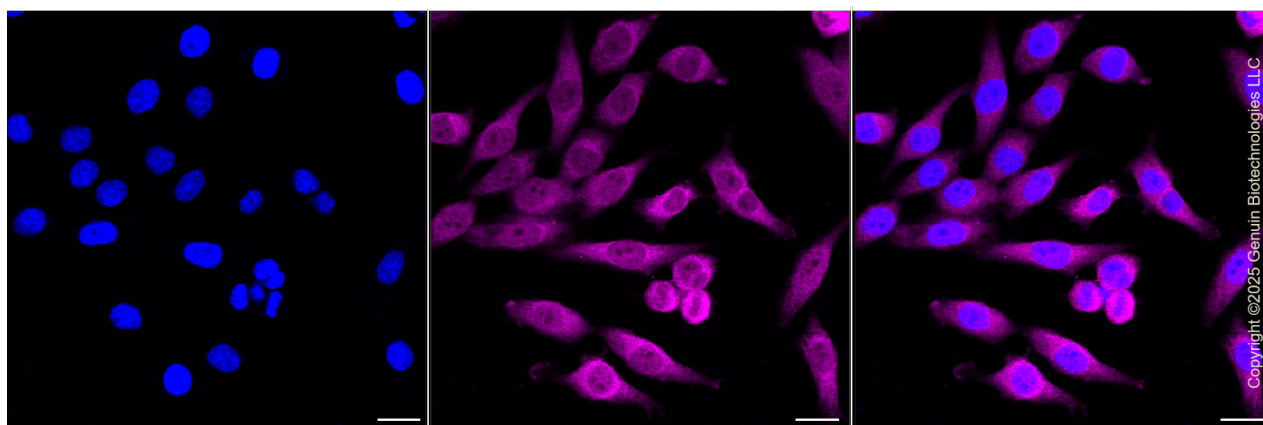
SALES@GENUINBIOTECH.COM
FAX: +1-540-855-7041

WWW.GENUINBIOTECH.COM



Phosphogluconate dehydrogenase- Alexa Fluor® 647

Flow cytometric analysis of Phosphogluconate dehydrogenase expression in HepG2 cells using anti-Phosphogluconate dehydrogenase antibody (Cat#61656, 1:2,000). Green, isotype control; red, Phosphogluconate dehydrogenase.



SUPPORT

SUPPORT@GENUINBIOTECH.COM
TEL: +1-540-855-7041

ORDERS

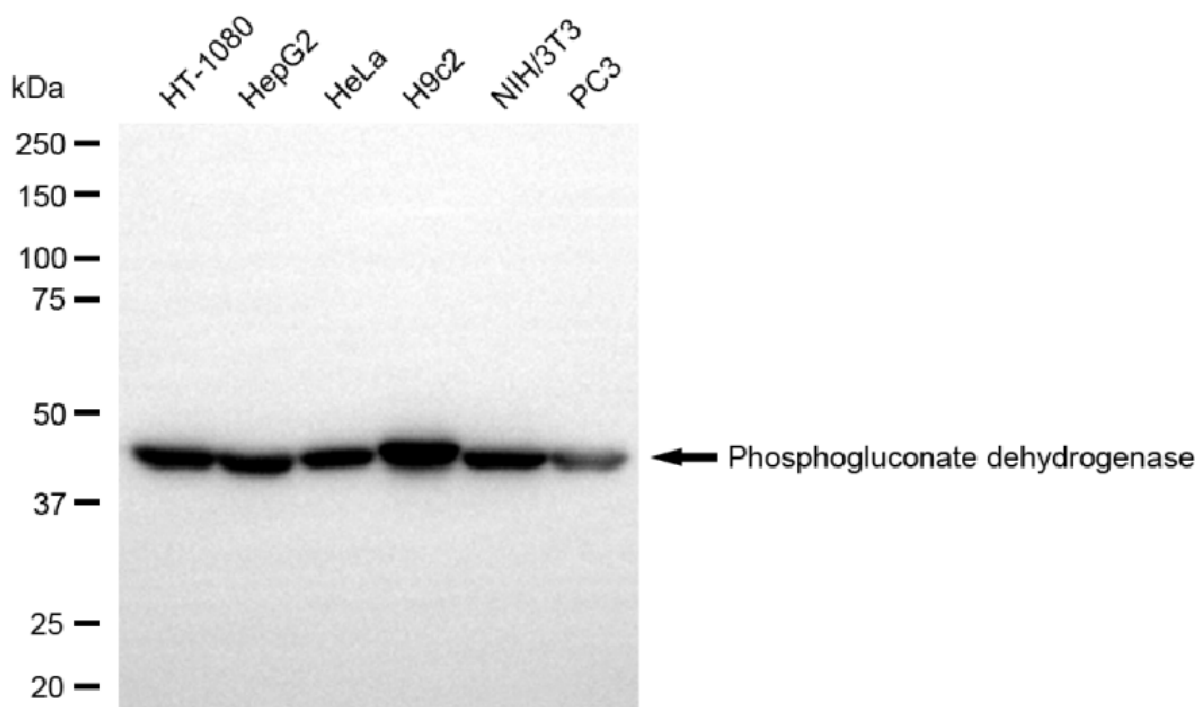
SALES@GENUINBIOTECH.COM
FAX: +1-540-855-7041

WWW.GENUINBIOTECH.COM

KD-Validated Anti-Phosphogluconate Dehydrogenase Recombinant Rabbit

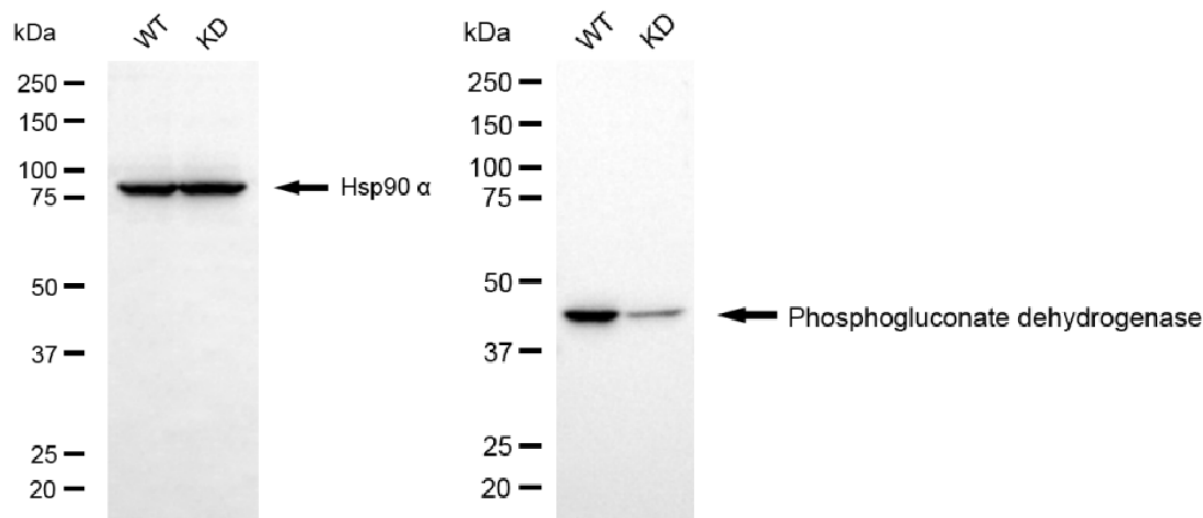
PAGE 3

Immunocytochemical staining of HepG2 cells with Phosphogluconate dehydrogenase antibody (Cat#61656, 1:1,000). Nuclei were stained blue with DAPI; Phosphogluconate dehydrogenase was stained magenta with Alexa Fluor® 647. Images were taken using Leica stellaris 5. Protein abundance based on laser Intensity and smart gain: Medium. Scale bar, 20 μ m.



Copyright ©2025 Genuin Biotechnologies LLC

Western blotting analysis using anti-phosphogluconate dehydrogenase antibody (Cat#61656). Total cell lysates (30 μ g) from various cell lines were loaded and separated by SDS-PAGE. The blot was incubated with anti-phosphogluconate dehydrogenase antibody (Cat#61656, 1:5,000) and HRP-conjugated goat anti rabbit secondary antibody (Cat#201, 1:20,000) respectively. Image was developed using NaQ™ ECL Substrate Kit (Cat#716).



Copyright ©2025 Genuin Biotechnologies LLC

SUPPORT

SUPPORT@GENUINBIOTECH.COM
TEL: +1-540-855-7041

ORDERS

SALES@GENUINBIOTECH.COM
FAX: +1-540-855-7041

WWW.GENUINBIOTECH.COM

KD-Validated Anti-Phosphogluconate Dehydrogenase Recombinant Rabbit

PAGE 4

Western blotting analysis using anti-phosphogluconate dehydrogenase antibody (Cat#61656). Phosphogluconate dehydrogenase expression in wild type (WT) and phosphogluconate dehydrogenase (PGD) knockdown (KD) HSHC cells with 20 µg of total cell lysates. Hsp90 α serves as a loading control. The blot was incubated with anti-phosphogluconate dehydrogenase antibody (Cat#61656, 1:5,000) and HRP-conjugated goat anti-rabbit secondary antibody (Cat#201, 1:20,000) respectively. Image was developed using NaQ™ ECL Substrate Kit (Cat#716).

SUPPORT

SUPPORT@GENUINBIOTECH.COM
TEL: +1-540-855-7041

ORDERS

SALES@GENUINBIOTECH.COM
FAX: +1-540-855-7041

WWW.GENUINBIOTECH.COM