

KD-Validated Anti-SNRPA1 Recombinant Rabbit Monoclonal Antibody



Catalog #: 61657

Aliases

SNRPA1; Small Nuclear Ribonucleoprotein Polypeptide A'; Lea1; U2A'; U2 Small Nuclear Ribonucleoprotein A'; U2 SnRNP A'; U2 Small Nuclear Ribonucleoprotein Polypeptide A'

Background

Gene Name: SNRPA1

NCBI Gene Entry: [6627](#)

UniProt Entry: [P09661](#)

Application Information

Molecular Weight: Predicted, 28 kDa, observed, 28 kDa

Clonality: Rabbit monoclonal antibody

Clone ID: 25GB3175

Species Reactivity: Human, mouse, rat

Applications Tested: Western blotting (WB), flow cytometry (FCM), immunocytochemistry (IC)

Immunogen

A synthesized peptide derived from human SNRPA1

Isotype

Rabbit IgG

Storage Buffer

Supplied in PBS (pH 7.4) containing 50% glycerol, and 0.02% sodium azide.

Storage

Store at -20 °C for one year.

Recommended Dilutions

Western blotting (WB): 1:1,000-1:5,000

Flow Cytometry (FCM): 1:2,000

Immunocytochemistry (IC): 1:100-1:1,000

Note: This product is for research use only.

Validation Data

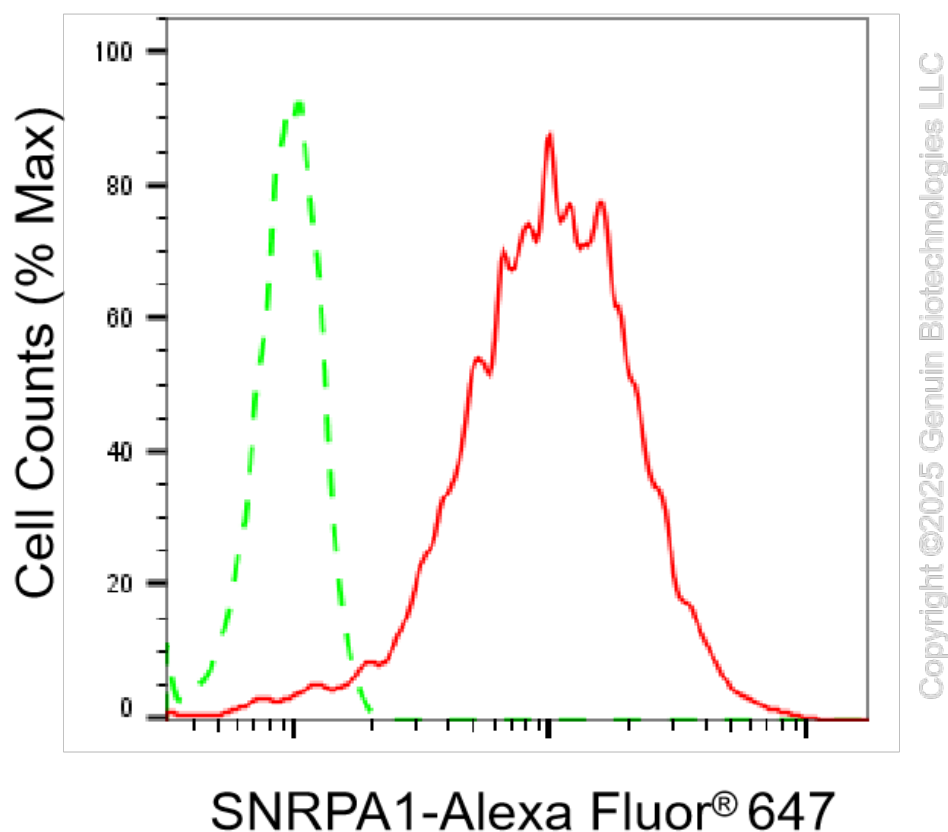
SUPPORT

SUPPORT@GENUINBIOTECH.COM
TEL: +1-540-855-7041

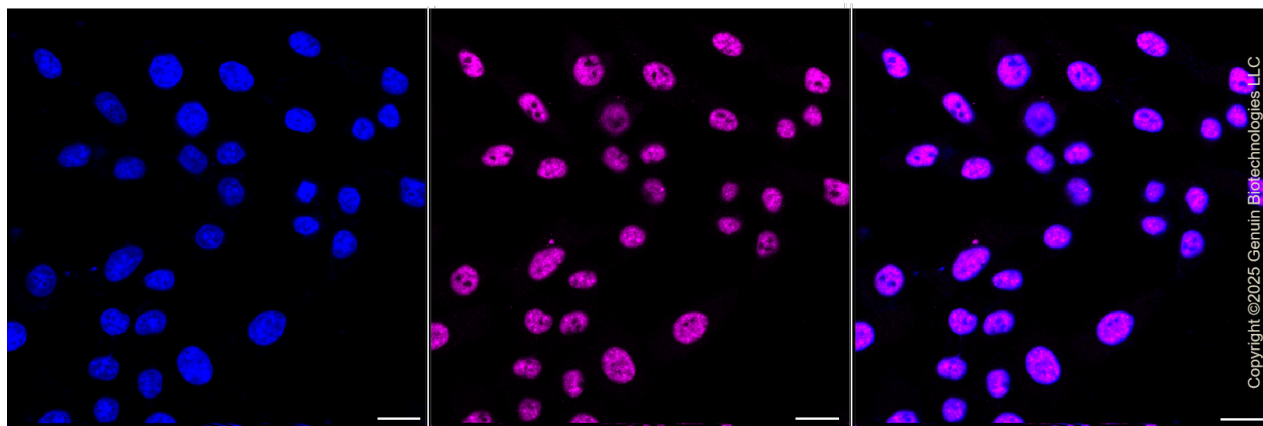
ORDERS

SALES@GENUINBIOTECH.COM
FAX: +1-540-855-7041

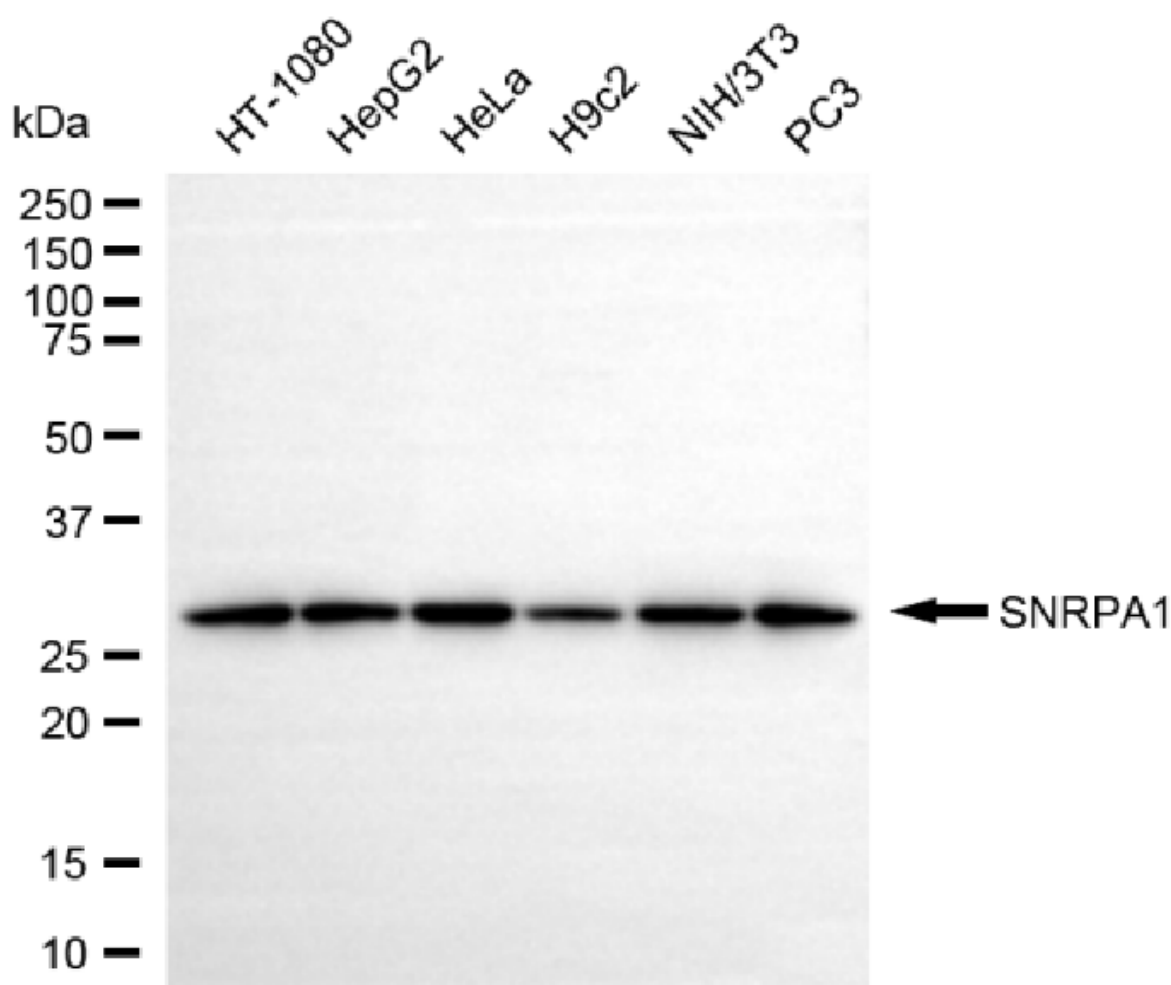
WWW.GENUINBIOTECH.COM



Flow cytometric analysis of SNRPA1 expression in HepG2 cells using anti-SNRPA1 antibody (Cat#61657, 1:2,000). Green, isotype control; red, SNRPA1.



Immunocytochemical staining of HepG2 cells with anti-SNRPA1 antibody (Cat#61657, 1:1,000). Nuclei were stained blue with DAPI; SNRPA1 was stained magenta with Alexa Fluor® 647. Images were taken using Leica stellaris 5. Protein abundance based on laser Intensity and smart gain: Medium. Scale bar, 20 μ m.

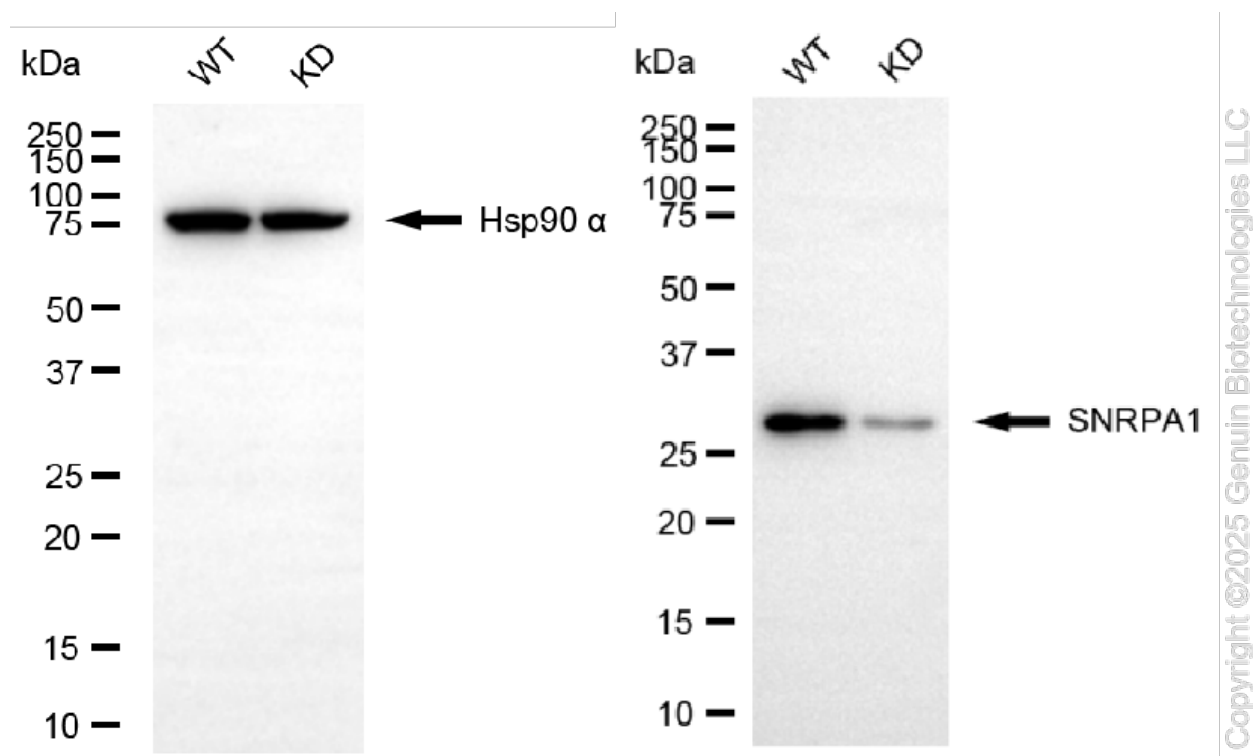


Copyright ©2025 Genuin Biotechnologies LLC

Western blotting analysis using anti-SNRPA1 antibody (Cat#61657). Total cell lysates (30 μ g) from various cell lines were loaded and separated by SDS-PAGE. The blot was incubated with anti-SNRPA1 antibody (Cat#61657, 1:5,000) and HRP-conjugated goat anti-rabbit secondary antibody (Cat#201, 1:20,000) respectively. Image was developed using NaQ™ ECL Substrate Kit (Cat#716).

KD-Validated Anti-SNRPA1 Recombinant Rabbit Monoclonal Antibody

PAGE 4



Western blotting analysis using anti-SNRPA1 antibody (Cat#61657). SNRPA1 expression in wild-type (WT) and SNRPA1 knockdown (KD) HeLa cells with 20 µg of total cell lysates. Hsp90 α serves as a loading control. The blot was incubated with anti-SNRPA1 antibody (Cat#61657, 1:5,000) and HRP-conjugated goat anti-rabbit secondary antibody (Cat#201, 1:20,000) respectively. Image was developed using NaQ™ ECL Substrate Kit (Cat#716).

SUPPORT

SUPPORT@GENUINBIOTECH.COM
TEL: +1-540-855-7041

ORDERS

SALES@GENUINBIOTECH.COM
FAX: +1-540-855-7041

WWW.GENUINBIOTECH.COM