

KD-Validated Anti-ASPSCR1 Recombinant Rabbit Monoclonal Antibody



Catalog #: 61659

Aliases

ASPSCR1; ASPSCR1 Tether For SLC2A4, UBX Domain Containing; UBXD9; UBXN9; ASPL; TUG; Tether Containing UBX Domain For GLUT4; ASPS; Alveolar Soft Part Sarcoma Chromosomal Region Candidate Gene 1 Protein; Alveolar Soft Part Sarcoma Chromosome Region, Candidate; ASPSCR1, UBX Domain Containing Tether For SLC2A4; Renal Papillary Cell Carcinoma Protein 17; Alveolar Soft Part Sarcoma Locus; UBX Domain-Containing Protein 9; UBX Domain Protein 9; RCC17; Renal Cell Carcinoma Gene On Chromosome 17; Renal Cell Carcinoma, Papillary, 17; ASPCR1

Background

Gene Name: ASPSCR1

NCBI Gene Entry: [79058](#)

UniProt Entry: [Q9BZE9](#)

Application Information

Molecular Weight: Predicted, 60 kDa; observed, 70 kDa

Clonality: Rabbit monoclonal antibody

Clone ID: 25GB3185

Species Reactivity: Human, mouse, rat

Applications Tested: Western blotting (WB), flow cytometry (FCM), immunocytochemistry (IC)

Immunogen

A synthesized peptide derived from human TUG

Isotype

Rabbit IgG

Storage Buffer

Supplied in PBS (pH 7.4) containing 50% glycerol, and 0.02% sodium azide.

Storage

Store at -20 °C for one year.

Recommended Dilutions

Western blotting (WB): 1:1,000-1:5,000

SUPPORT

SUPPORT@GENUINBIOTECH.COM
TEL: +1-540-855-7041

ORDERS

SALES@GENUINBIOTECH.COM
FAX: +1-540-855-7041

WWW.GENUINBIOTECH.COM

KD-Validated Anti-ASPSCR1 Recombinant Rabbit Monoclonal Antibody

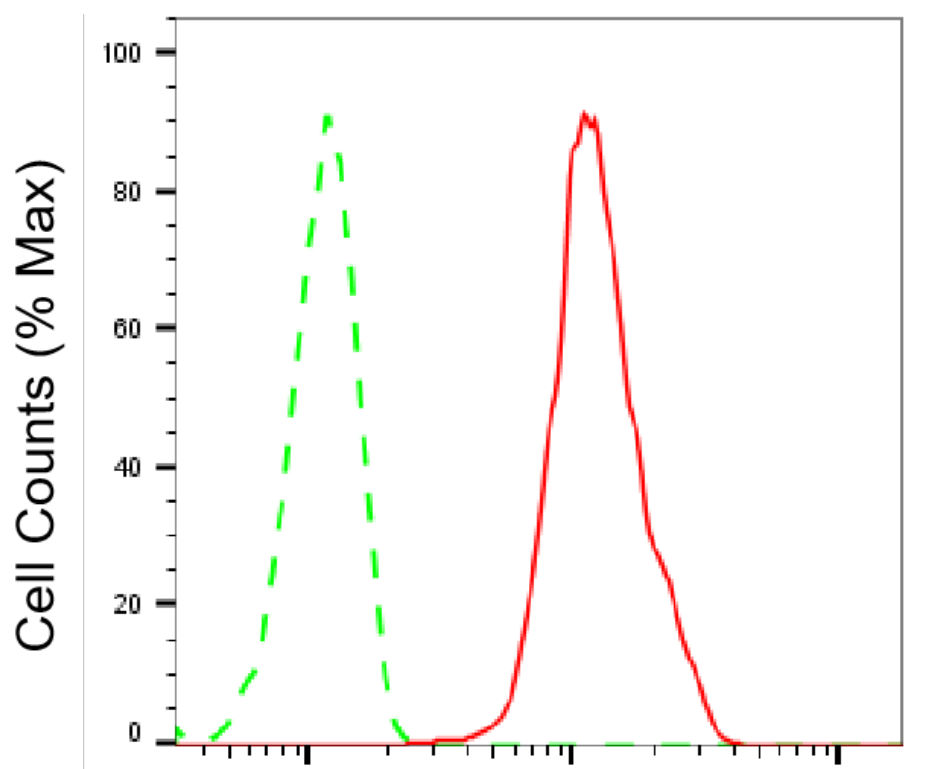
PAGE 2

Flow Cytometry (FCM): 1:2,000

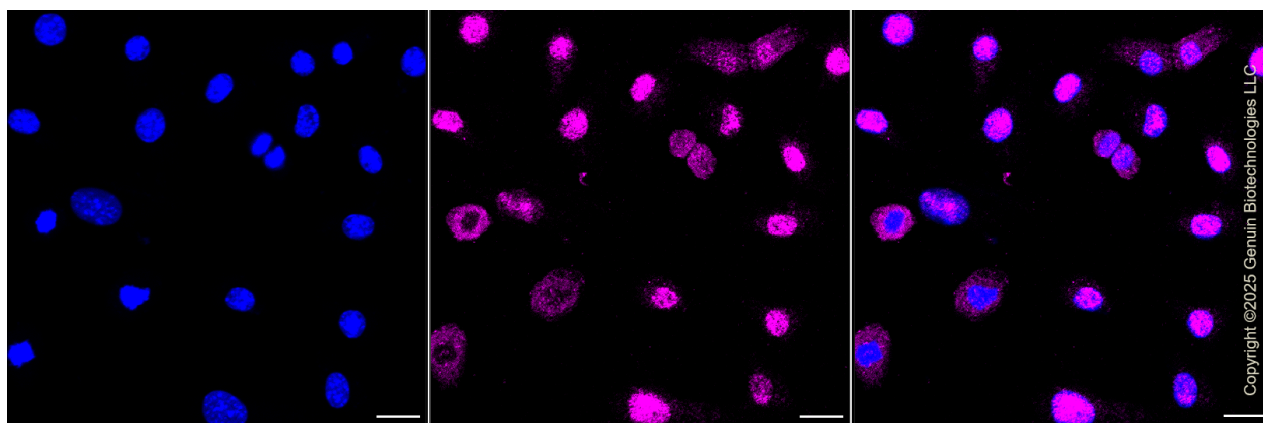
Immunocytochemistry (IC): 1:100-1:1,000

Note: This product is for research use only.

Validation Data



Flow cytometric analysis of ASPSCR1 expression in C2C12 cells using anti-ASPSCR1 antibody (Cat#61659, 1:2,000). Green, isotype control; red, ASPSCR1.



SUPPORT

SUPPORT@GENUINBIOTECH.COM
TEL: +1-540-855-7041

ORDERS

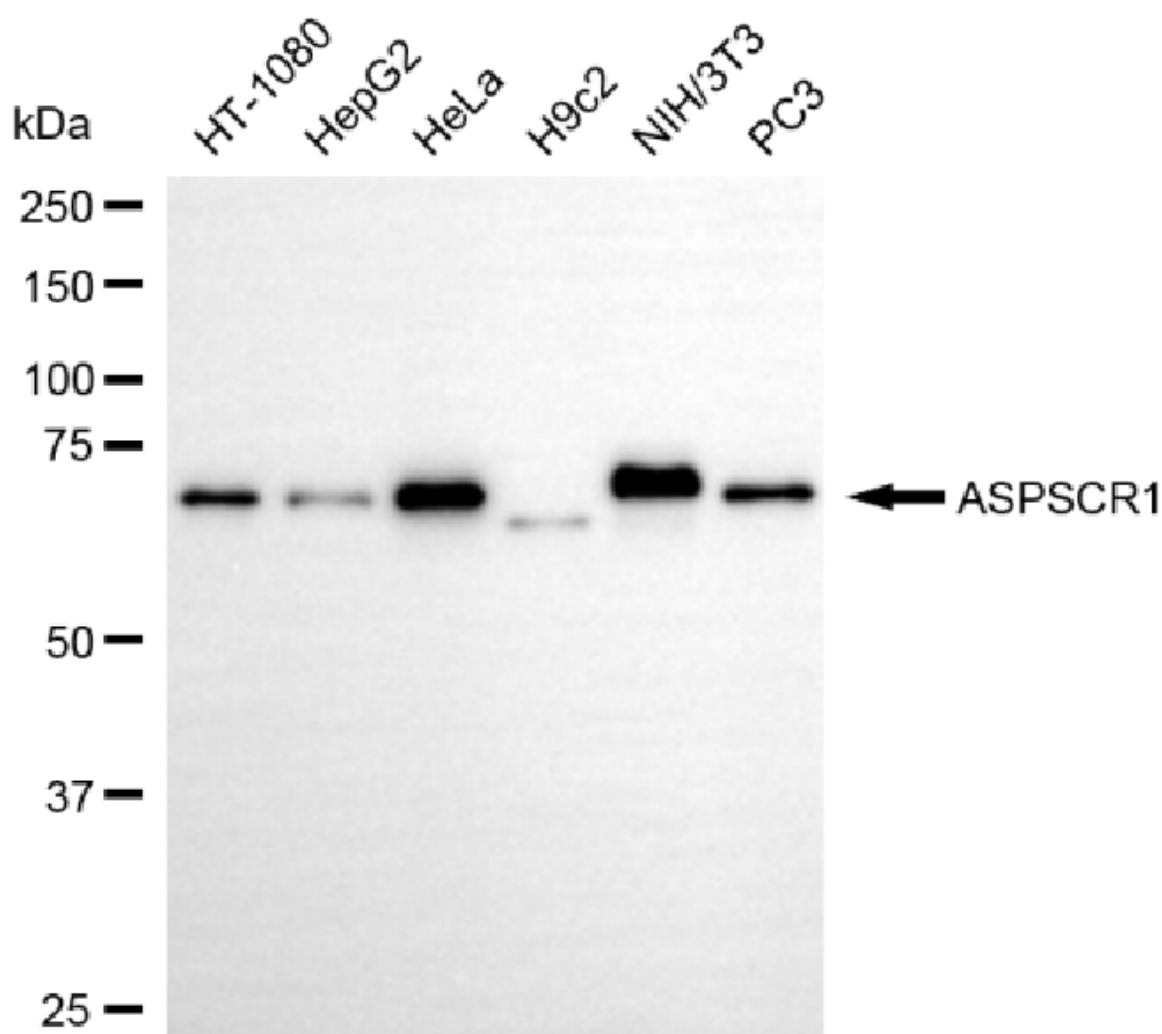
SALES@GENUINBIOTECH.COM
FAX: +1-540-855-7041

WWW.GENUINBIOTECH.COM

KD-Validated Anti-ASPSCR1 Recombinant Rabbit Monoclonal Antibody

PAGE 3

Immunocytochemical staining of C2C12 cells with ASPSCR1 antibody (Cat#61659, 1:1,000). Nuclei were stained blue with DAPI; ASPSCR1 was stained magenta with Alexa Fluor® 647. Images were taken using Leica stellaris 5. Protein abundance based on laser Intensity and smart gain: Medium. Scale bar, 20 μ m.



Copyright ©2025 Genuin Biotechnologies LLC

Western blotting analysis using anti-ASPSCR1 antibody (Cat#61659). Total cell lysates (30 μ g) from various cell lines were loaded and separated by SDS-PAGE. The blot was incubated with anti-ASPSCR1 antibody (Cat#61659, 1:5,000) and HRP-conjugated goat anti-rabbit secondary antibody (Cat#201, 1:20,000) respectively. Image was developed using NaQ™ ECL Substrate Kit (Cat#716).

SUPPORT

SUPPORT@GENUINBIOTECH.COM
TEL: +1-540-855-7041

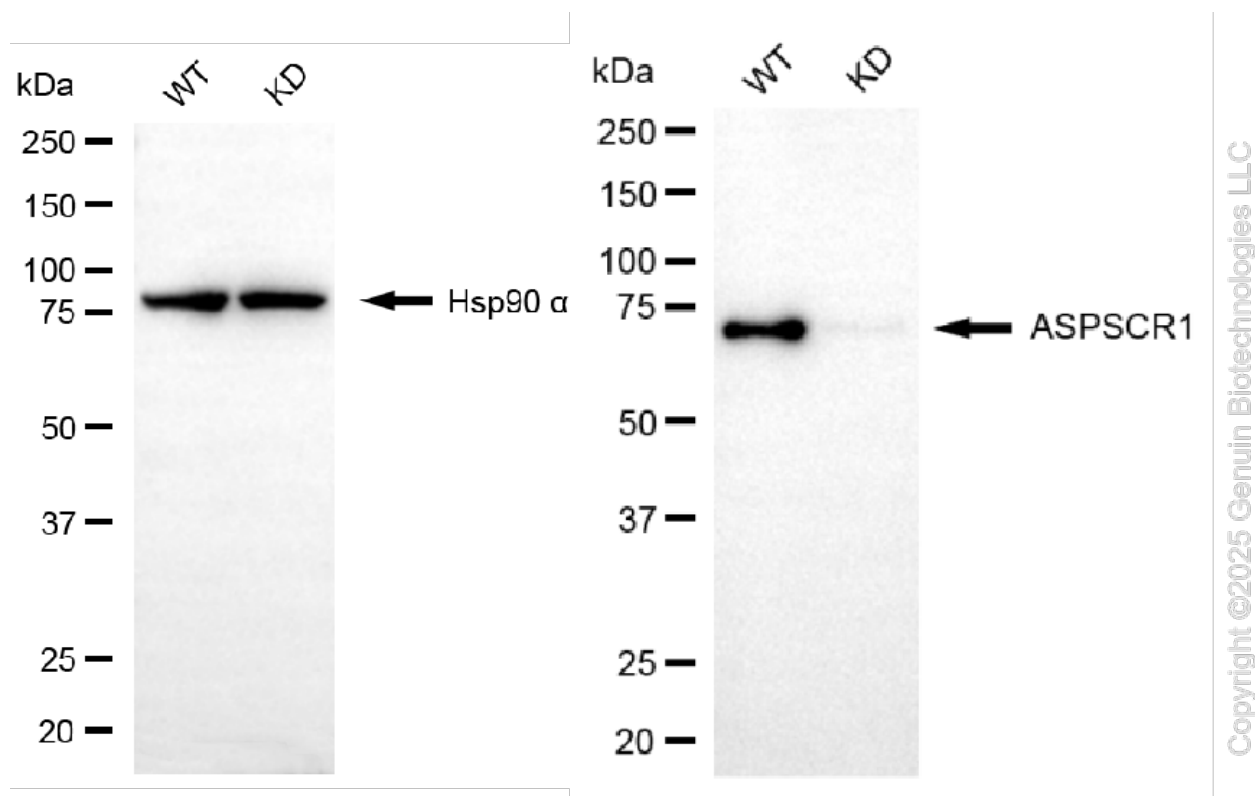
ORDERS

SALES@GENUINBIOTECH.COM
FAX: +1-540-855-7041

WWW.GENUINBIOTECH.COM

KD-Validated Anti-ASPSCR1 Recombinant Rabbit Monoclonal Antibody

PAGE 4



Western blotting analysis using anti-ASPSCR1 antibody (Cat#61659). ASPSCR1 expression in wild type (WT) and ASPSCR1 knockdown (KD) HSHC cells with 20 µg of total cell lysates. Hsp90 α serves as a loading control. The blot was incubated with anti-ASPSCR1 antibody (Cat#61659, 1:5,000) and HRP-conjugated goat anti-rabbit secondary antibody (Cat#201, 1:20,000) respectively. Image was developed using FeQ™ ECL Substrate Kit (Cat#226).

SUPPORT

SUPPORT@GENUINBIOTECH.COM
TEL: +1-540-855-7041

ORDERS

SALES@GENUINBIOTECH.COM
FAX: +1-540-855-7041

WWW.GENUINBIOTECH.COM