

KD-Validated Anti-RAB5C Recombinant Rabbit Monoclonal Antibody



Catalog #: 61660

Aliases

RAB5C; RAB5C, Member RAS Oncogene Family; RAB5CL; RABL; RAB5C, Member Of RAS Oncogene Family; Ras-Related Protein Rab-5C; L1880; RAB5L; RAB, Member Of RAS Oncogene Family-Like; EC 3.6.5.2

Background

Gene Name: RAB5C

NCBI Gene Entry: [5878](#)

UniProt Entry: [P51148](#)

Application Information

Molecular Weight: Predicted, 23 kDa, observed, 23 kDa

Clonality: Rabbit monoclonal antibody

Clone ID: 25GB3190

Species Reactivity: Human, mouse, rat

Applications Tested: Western blotting (WB), flow cytometry (FCM), immunocytochemistry (IC)

Immunogen

A synthesized peptide derived from human RAB5C / RABL

Isotype

Rabbit IgG

Storage Buffer

Supplied in PBS (pH 7.4) containing 50% glycerol, and 0.02% sodium azide.

Storage

Store at -20 °C for one year.

Recommended Dilutions

Western blotting (WB): 1:1,000-1:5,000

Flow Cytometry (FCM): 1:2,000

Immunocytochemistry (IC): 1:100-1:1,000

Note: This product is for research use only.

SUPPORT

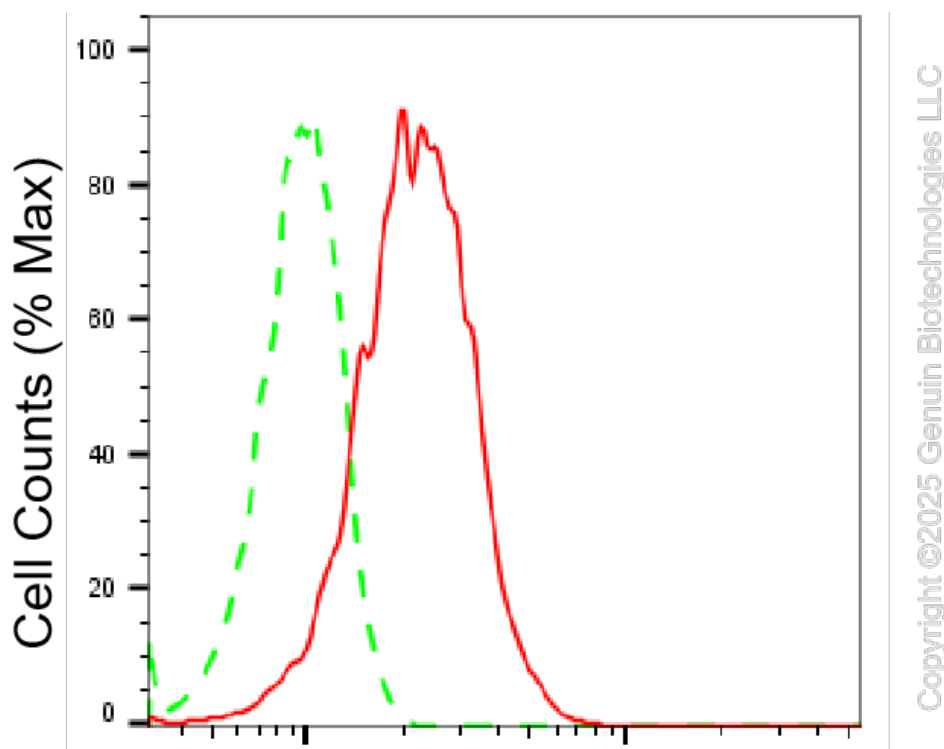
SUPPORT@GENUINBIOTECH.COM
TEL: +1-540-855-7041

ORDERS

SALES@GENUINBIOTECH.COM
FAX: +1-540-855-7041

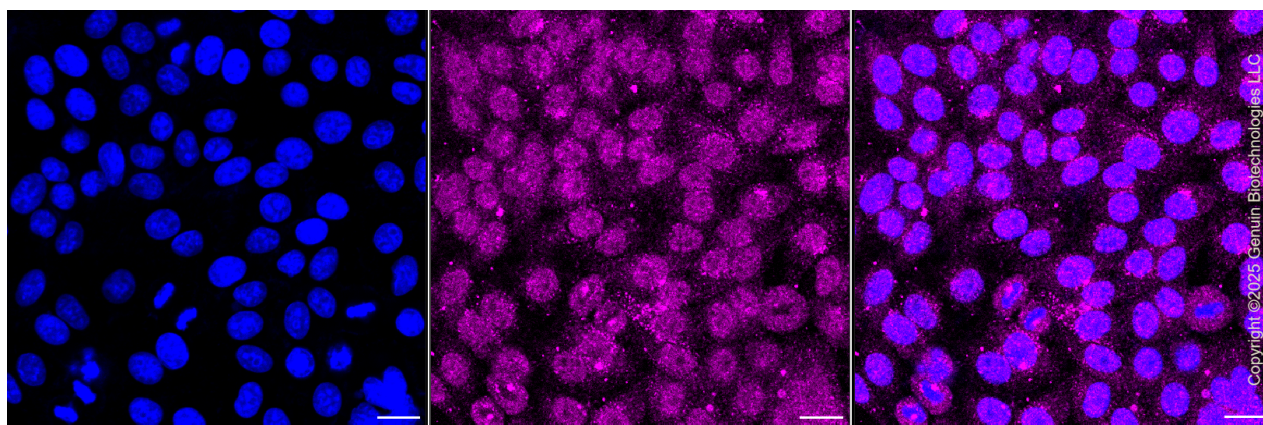
WWW.GENUINBIOTECH.COM

Validation Data



RAB5C-Alexa Fluor® 647

Flow cytometric analysis of RAB5C expression in HepG2 cells using anti-RAB5C antibody (Cat#61660, 1:2,000). Green, isotype control; red, RAB5C.



Immunocytochemical staining of HepG2 cells with anti-RAB5C antibody (Cat#61660, 1:1,000). Nuclei were stained blue with DAPI; RAB5C was stained magenta with Alexa Fluor® 647. Images were taken using Leica stellaris 5. Protein abundance based on laser Intensity and smart gain: Medium. Scale bar, 20 μ m.

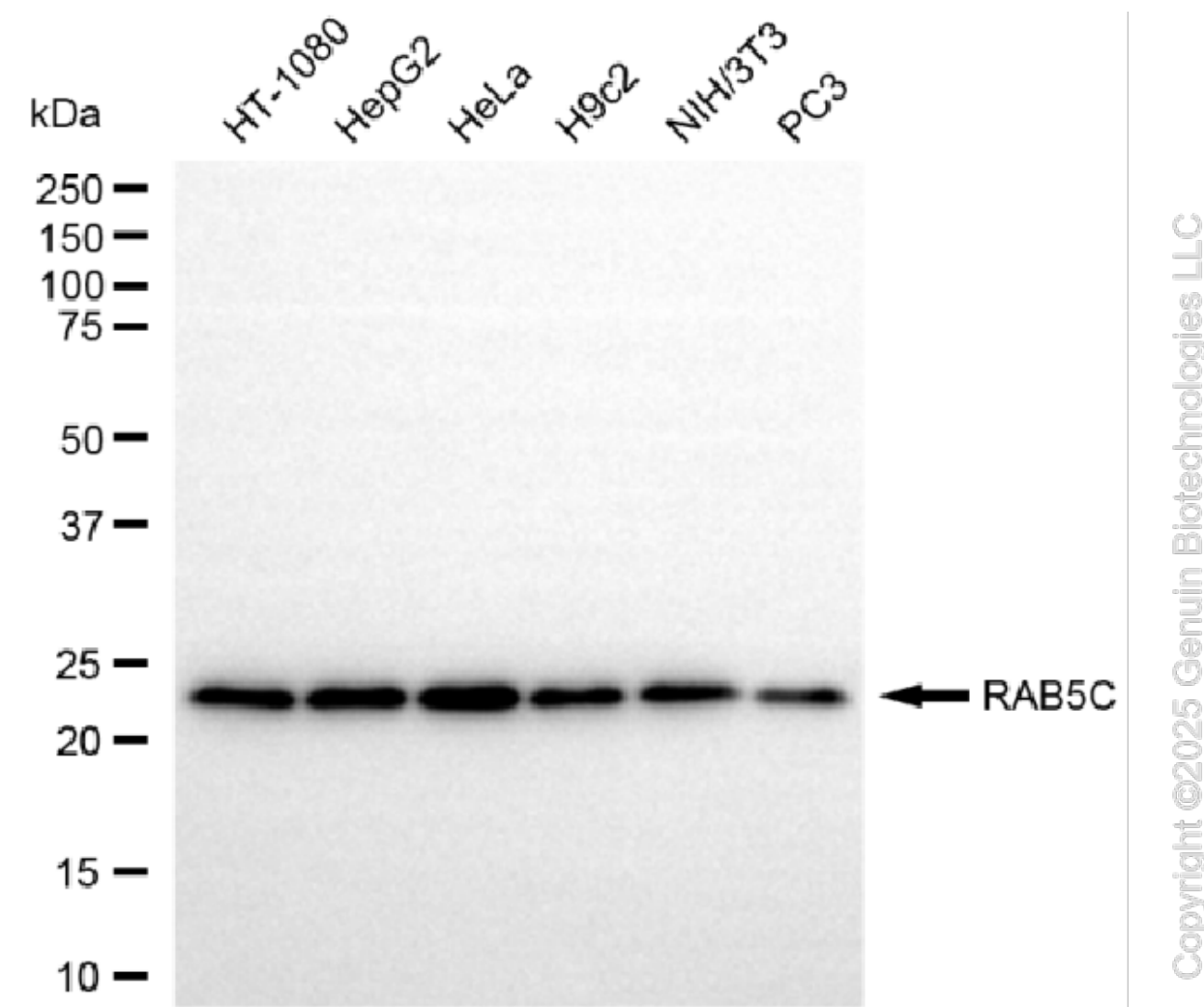
SUPPORT

SUPPORT@GENUINBIOTECH.COM
TEL: +1-540-855-7041

ORDERS

SALES@GENUINBIOTECH.COM
FAX: +1-540-855-7041

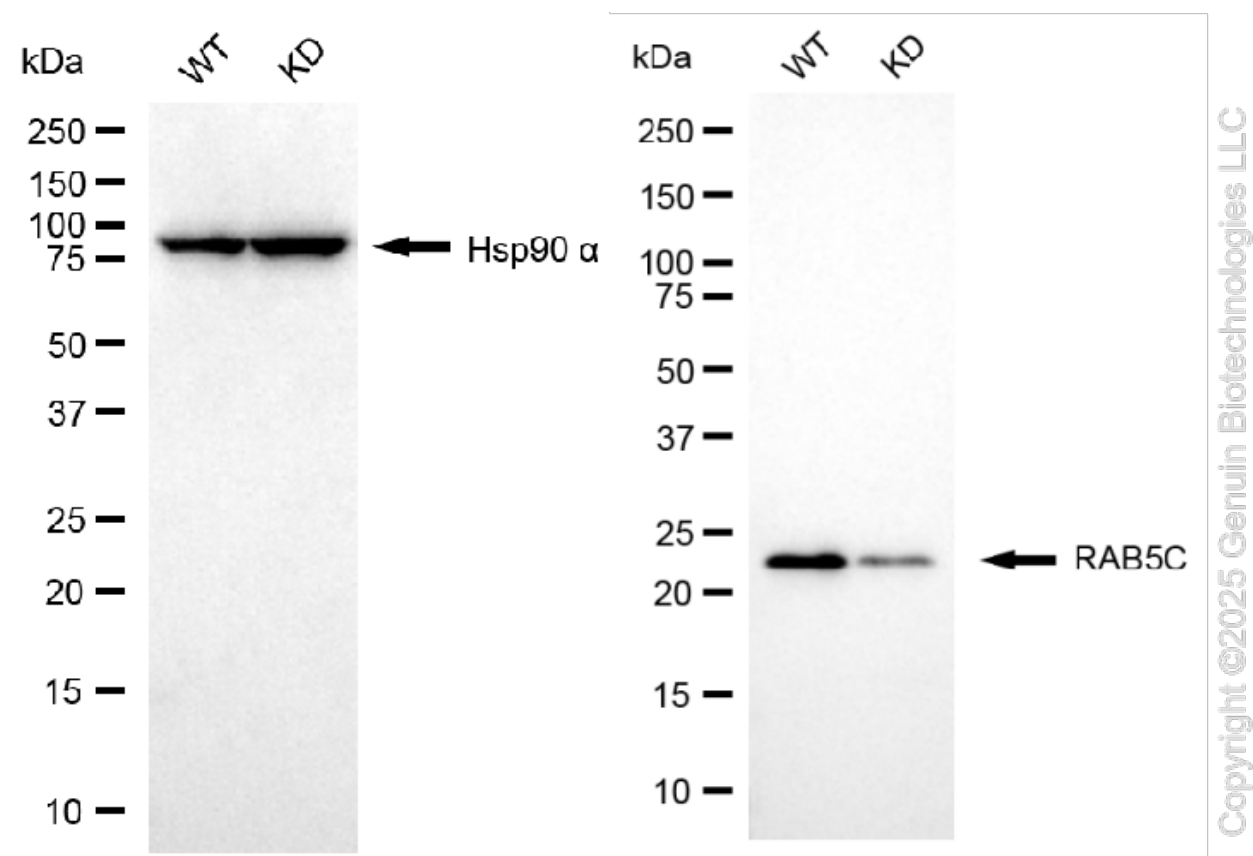
WWW.GENUINBIOTECH.COM



Western blotting analysis using anti-RAB5C antibody (Cat#61660). Total cell lysates (30 μ g) from various cell lines were loaded and separated by SDS-PAGE. The blot was incubated with anti-RAB5C antibody (Cat#61660, 1:5,000) and HRP-conjugated goat anti-rabbit secondary antibody (Cat#201, 1:20,000) respectively. Image was developed using NaQ™ ECL Substrate Kit (Cat#716).

KD-Validated Anti-RAB5C Recombinant Rabbit Monoclonal Antibody

PAGE 4



Western blotting analysis using anti-RAB5C antibody (Cat#61660). RAB5C expression in wild type (WT) and RAB5C knockdown (KD) HSHC cells with 20 µg of total cell lysates. Hsp90 α serves as a loading control. The blot was incubated with anti-RAB5C antibody (Cat#61660, 1:5,000) and HRP-conjugated goat anti-rabbit secondary antibody (Cat#201, 1:20,000) respectively. Image was developed using NaQ™ ECL Substrate Kit (Cat#716).

SUPPORT

SUPPORT@GENUINBIOTECH.COM
TEL: +1-540-855-7041

ORDERS

SALES@GENUINBIOTECH.COM
FAX: +1-540-855-7041

WWW.GENUINBIOTECH.COM