

KD-Validated Anti-Tumor Protein P53 Recombinant Rabbit Monoclonal Antibody



Catalog #: 61662

Aliases

TP53; Tumor Protein P53; P53; LFS1; Cellular Tumor Antigen P53; Phosphoprotein P53; Antigen NY-CO-13; Transformation-Related Protein 53; Mutant Tumor Protein 53; Li-Fraumeni Syndrome; Tumor Suppressor P53; Tumor Suppressor P53; Tumor Protein 53; BMFS5; TRP53; BCC7

Background

Gene Name: TP53

NCBI Gene Entry: [7157](#)

UniProt Entry: [P04637](#)

Application Information

Molecular Weight: Predicted, 44 kDa; observed, 53 kDa

Clonality: Rabbit monoclonal antibody

Clone ID: 25GB3210

Species Reactivity: Human, rat

Applications Tested: Western blotting (WB), flow cytometry (FCM), immunocytochemistry (IC)

Immunogen

A synthesized peptide derived from human p53

Isotype

Rabbit IgG

Storage Buffer

Supplied in PBS (pH 7.4) containing 50% glycerol, and 0.02% sodium azide.

Storage

Store at -20 °C for one year.

Recommended Dilutions

Western Blotting (WB): 1:1,000-1:5,000

Flow Cytometry (FCM): 1:2,000

Immunocytochemistry (IC): 1:100-1:1,000

SUPPORT

SUPPORT@GENUINBIOTECH.COM
TEL: +1-540-855-7041

ORDERS

SALES@GENUINBIOTECH.COM
FAX: +1-540-855-7041

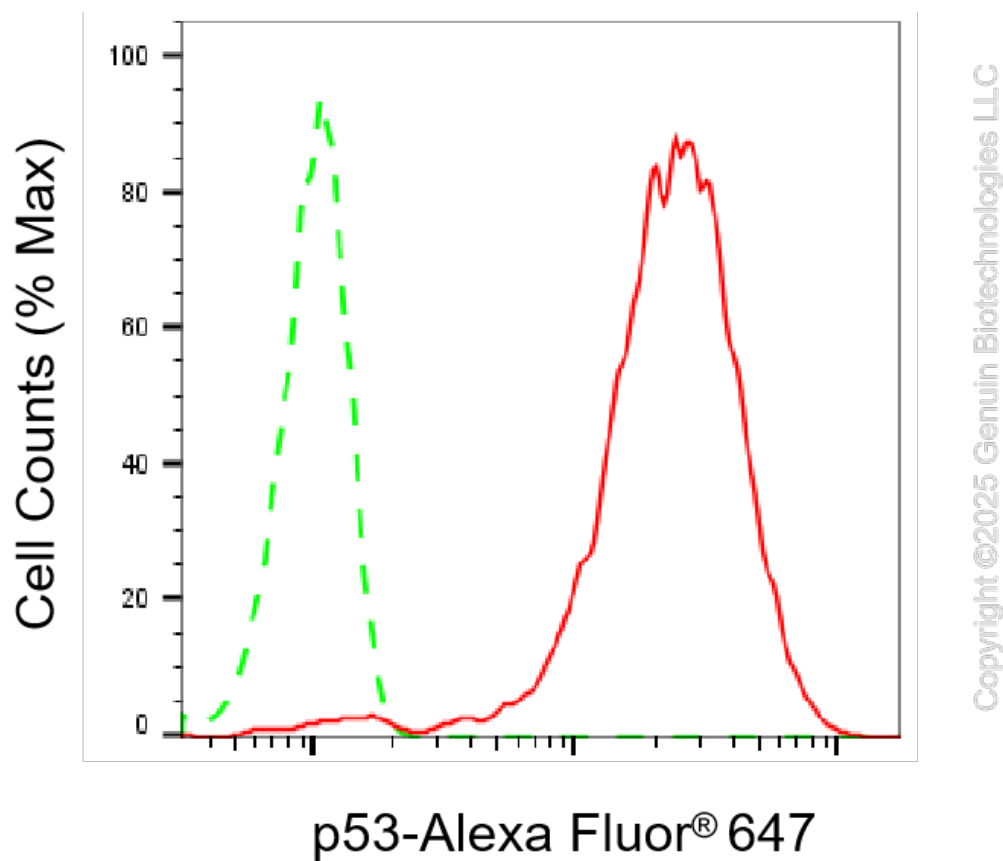
WWW.GENUINBIOTECH.COM

KD-Validated Anti-Tumor Protein P53 Recombinant Rabbit Monoclonal Antibody

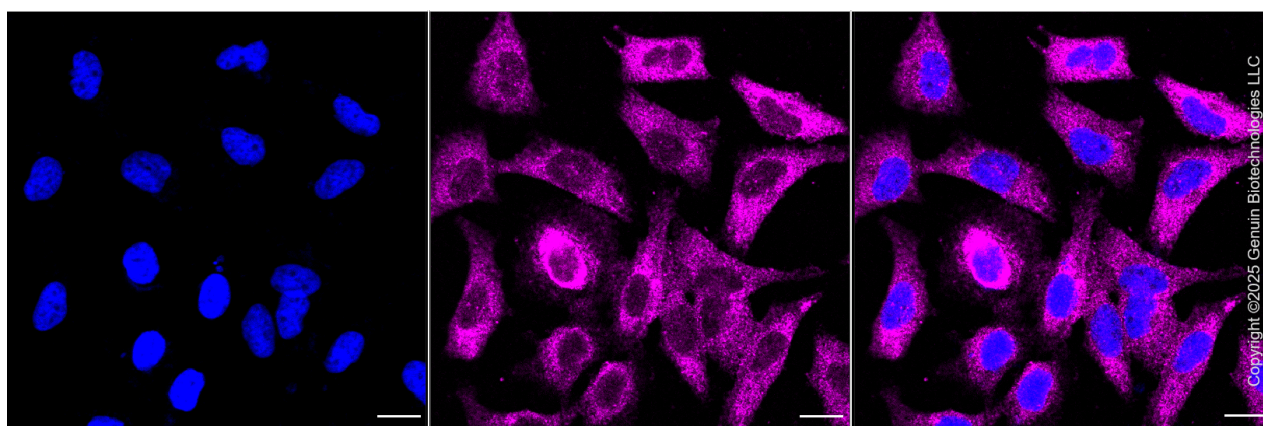
PAGE 2

Note: This product is for research use only.

Validation Data



Flow cytometric analysis of p53 expression in HeLa cells using anti-p53 antibody (Cat#61662, 1:2,000). Green, isotype control; red, p53.



Immunocytochemical staining of HeLa cells with anti-P53 antibody (Cat#61662, 1:1,000). Nuclei were stained blue with DAPI; P53 was stained magenta with Alexa Fluor® 647. Images were taken using Leica stellaris 5. Protein abundance based on laser Intensity and smart gain: Medium. Scale bar, 20 μ m.

SUPPORT

SUPPORT@GENUINBIOTECH.COM
TEL: +1-540-855-7041

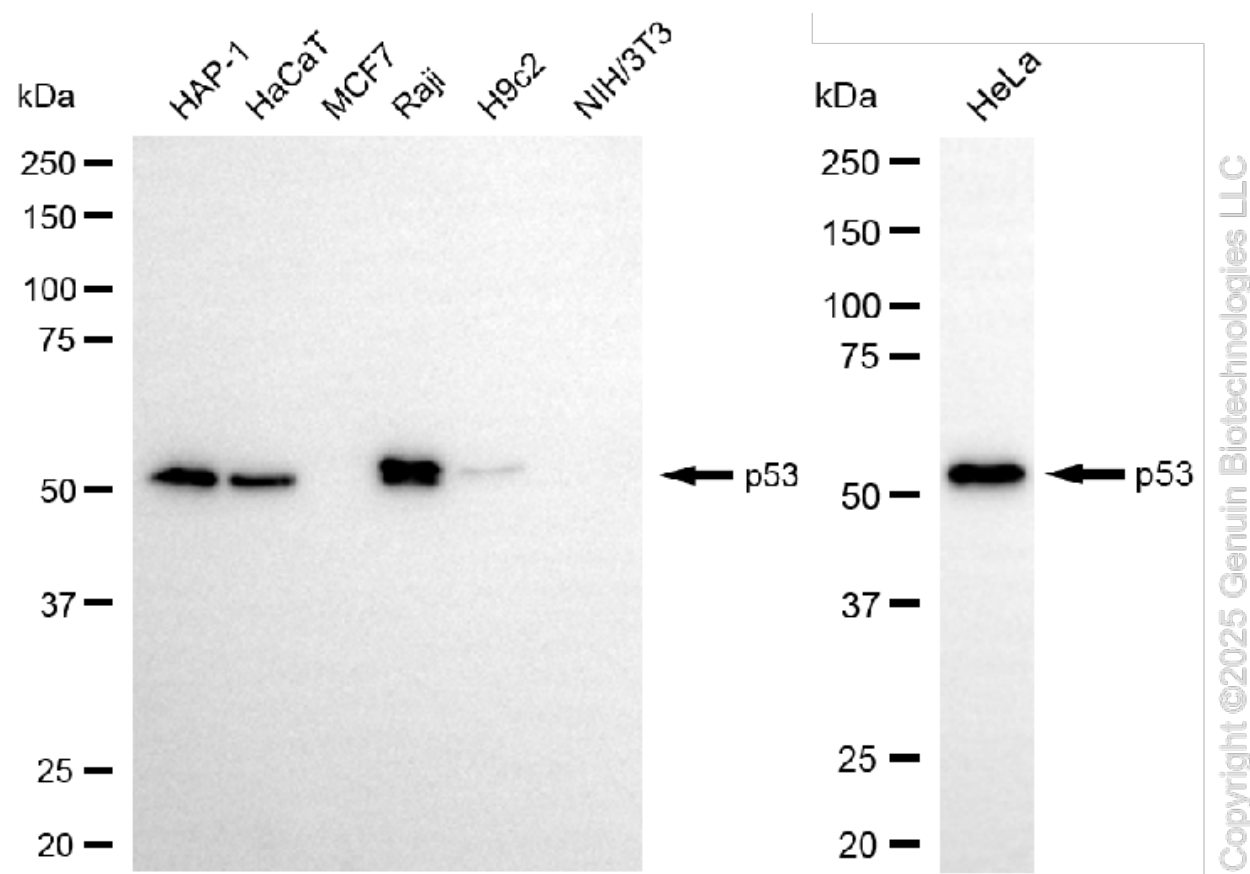
ORDERS

SALES@GENUINBIOTECH.COM
FAX: +1-540-855-7041

WWW.GENUINBIOTECH.COM

KD-Validated Anti-Tumor Protein P53 Recombinant Rabbit Monoclonal Antibody

PAGE 3



Western blotting analysis using anti-p53 antibody (Cat#61662). Total cell lysates (30 μ g) from various cell lines were loaded and separated by SDS-PAGE. The blot was incubated with anti-p53 antibody (Cat#61662, 1:5,000) and HRP-conjugated goat anti-rabbit secondary antibody (Cat#201, 1:20,000) respectively. Image was developed using FeQ™ ECL Substrate Kit (Cat#226).

SUPPORT

SUPPORT@GENUINBIOTECH.COM
TEL: +1-540-855-7041

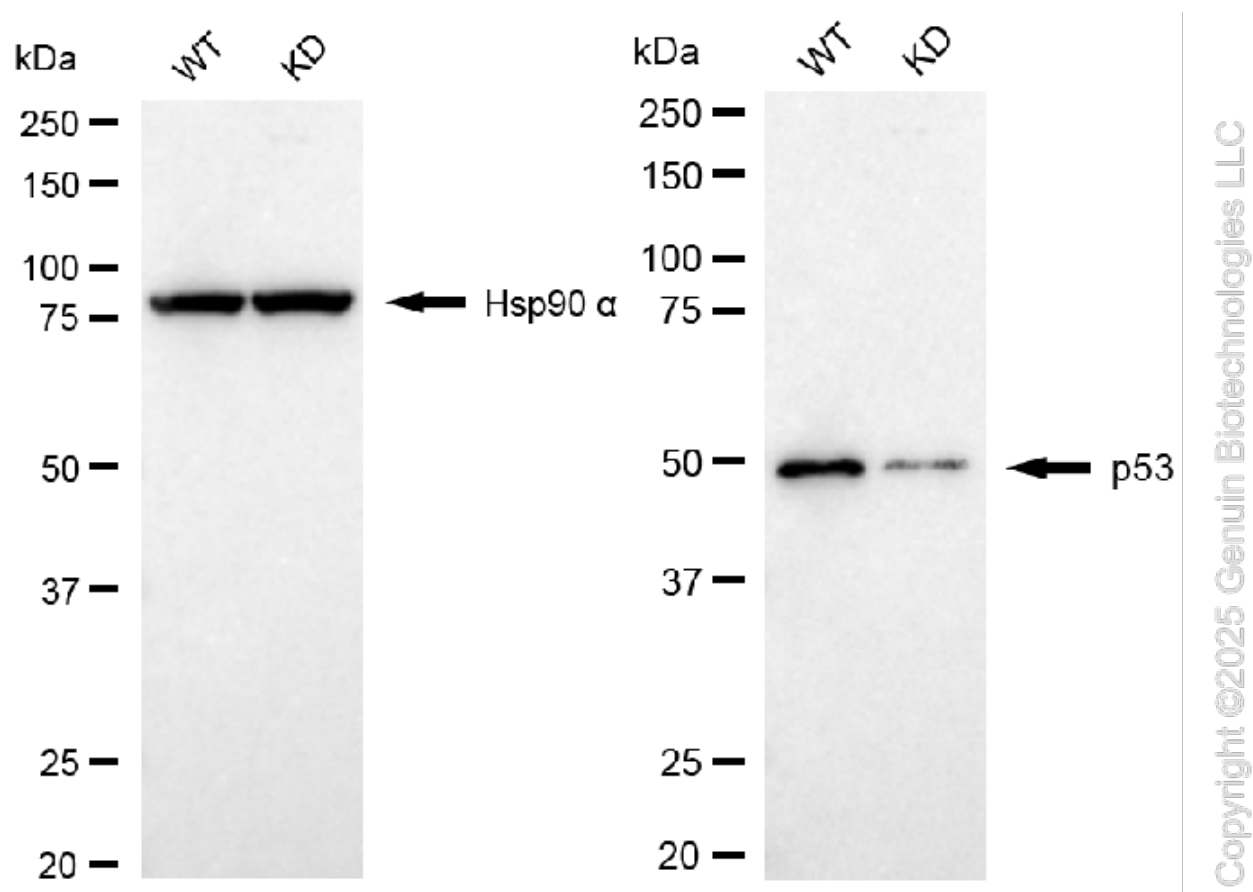
ORDERS

SALES@GENUINBIOTECH.COM
FAX: +1-540-855-7041

WWW.GENUINBIOTECH.COM

KD-Validated Anti-Tumor Protein P53 Recombinant Rabbit Monoclonal Antibody

PAGE 4



Western blotting analysis using anti-p53 antibody (Cat#61662). p53 expression in wild type (WT) and TP53 knockdown (KD) HSHC cells with 20 µg of total cell lysates. Hsp90 α serves as a loading control. The blot was incubated with anti-p53 antibody (Cat#61662, 1:5,000) and HRP-conjugated goat anti-rabbit secondary antibody (Cat#201, 1:20,000) respectively. Image was developed using NaQ™ ECL Substrate Kit (Cat#716).

SUPPORT

SUPPORT@GENUINBIOTECH.COM
TEL: +1-540-855-7041

ORDERS

SALES@GENUINBIOTECH.COM
FAX: +1-540-855-7041

WWW.GENUINBIOTECH.COM