

KD-Validated Anti-Phospho-p53 (S392) Recombinant Rabbit Monoclonal Antibody



Catalog #: 61663

Aliases

TP53; Tumor Protein P53; P53; LFS1; Cellular Tumor Antigen P53; Phosphoprotein P53; Antigen NY-CO-13; Transformation-Related Protein 53; Mutant Tumor Protein 53; Li-Fraumeni Syndrome; Tumor Suppressor P53; Tumor Suppressor P53; Tumor Protein 53; BMFS5; TRP53; BCC7

Background

Gene Name: TP53

NCBI Gene Entry: [7157](#)

UniProt Entry: [P04637](#)

Application Information

Molecular Weight: Predicted, 44 kDa; observed, 53 kDa

Clonality: Rabbit monoclonal antibody

Clone ID: 25GB3220

Species Reactivity: Human, rat

Applications Tested: Western blotting (WB), flow cytometry (FCM), immunocytochemistry (IC)

Immunogen

A synthesized peptide derived from human Phospho-p53 (S392)

Isotype

Rabbit IgG

Storage Buffer

Supplied in PBS (pH 7.4) containing 50% glycerol, and 0.02% sodium azide.

Storage

Store at -20 °C for one year.

Recommended Dilutions

Western Blotting (WB): 1:1,000-1:5,000

Flow Cytometry (FCM): 1:2,000

Immunocytochemistry (IC): 1:100-1:1,000

SUPPORT

SUPPORT@GENUINBIOTECH.COM
TEL: +1-540-855-7041

ORDERS

SALES@GENUINBIOTECH.COM
FAX: +1-540-855-7041

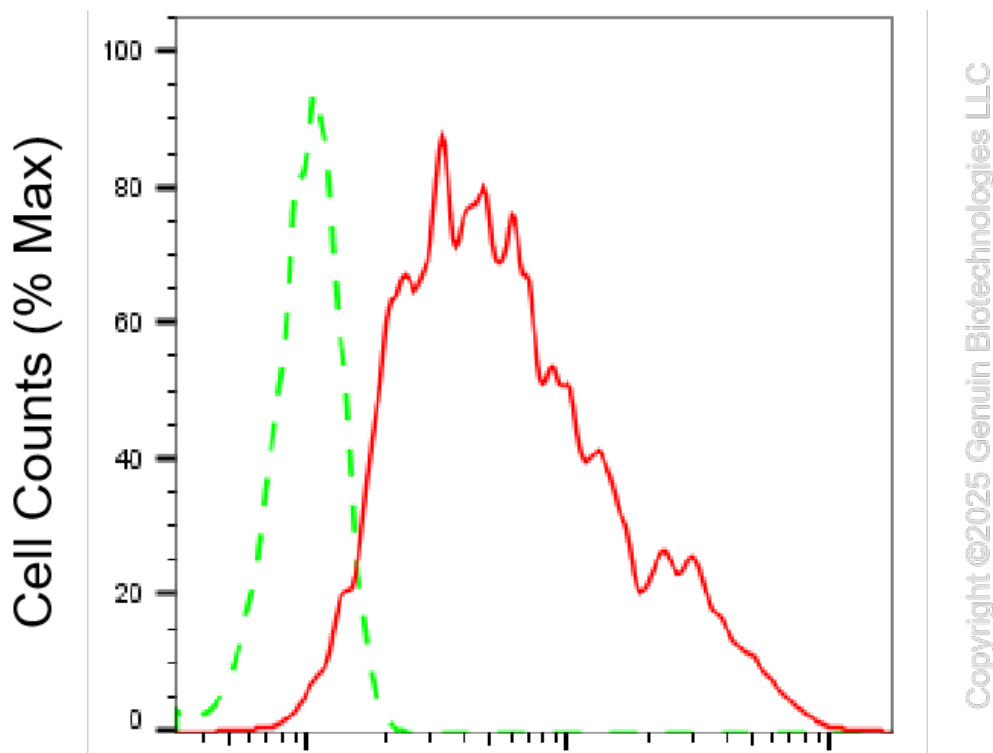
WWW.GENUINBIOTECH.COM

KD-Validated Anti-Phospho-p53 (S392) Recombinant Rabbit Monoclonal Antibody

PAGE 2

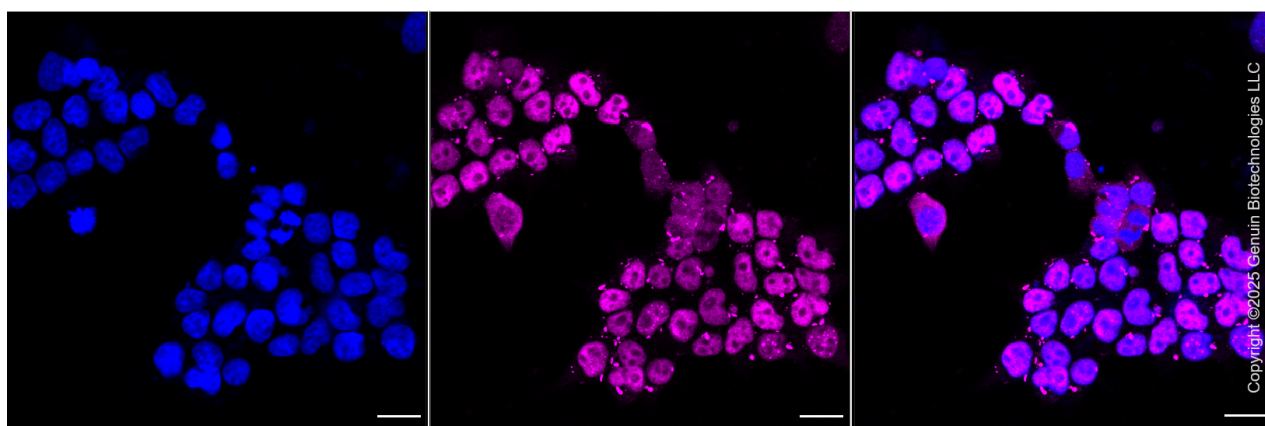
Note: This product is for research use only.

Validation Data



Phospho-p53 (S392)-Alexa Fluor® 647

Flow cytometric analysis of Phospho-p53 (S392) expression in HeLa cells using anti-Phospho-p53 (S392) antibody (Cat#61663, 1:2,000). Green, isotype control; red, Phospho-p53 (S392).



Immunocytochemical staining of HeLa cells with anti-Phospho-p53 (S392) antibody (Cat#61663, 1:1,000). Nuclei were stained blue with DAPI; Phospho-p53 (S392) was stained magenta with Alexa Fluor® 647. Images were taken using Leica stellaris 5. Protein abundance based on laser Intensity and smart gain: High. Scale bar, 20 μ m.

SUPPORT

SUPPORT@GENUINBIOTECH.COM
TEL: +1-540-855-7041

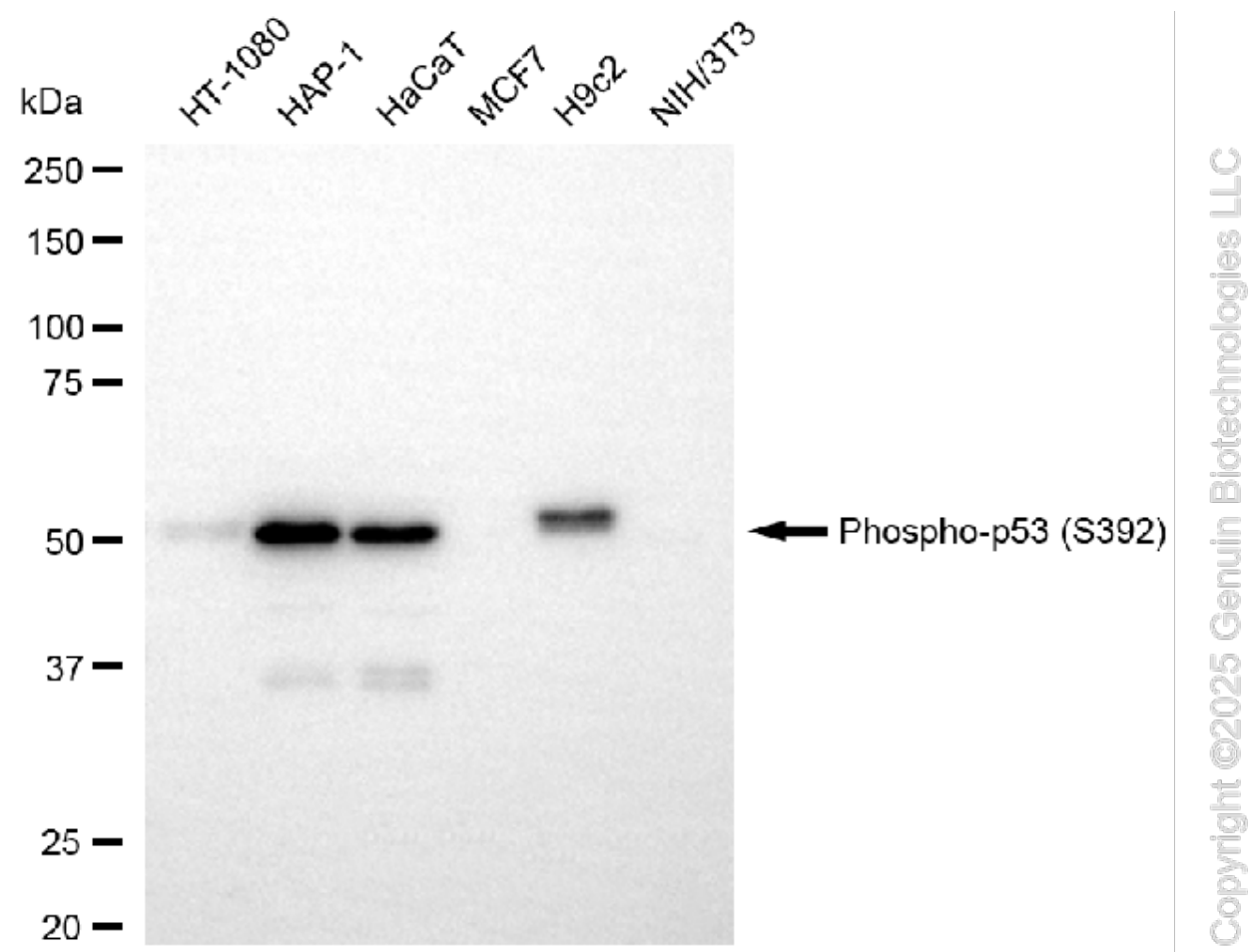
ORDERS

SALES@GENUINBIOTECH.COM
FAX: +1-540-855-7041

WWW.GENUINBIOTECH.COM

KD-Validated Anti-Phospho-p53 (S392) Recombinant Rabbit Monoclonal Antibody

PAGE 3



Western blotting analysis using anti-phospho-p53 (S392) antibody (Cat#61663). Total cell lysates (30 µg) from various cell lines were loaded and separated by SDS-PAGE. The blot was incubated with anti-phospho-p53 (S392) antibody (Cat#61663, 1:5,000) and HRP-conjugated goat anti-rabbit secondary antibody (Cat#201, 1:20,000) respectively. Image was developed using NaQ™ ECL Substrate Kit (Cat#716).

SUPPORT

SUPPORT@GENUINBIOTECH.COM
TEL: +1-540-855-7041

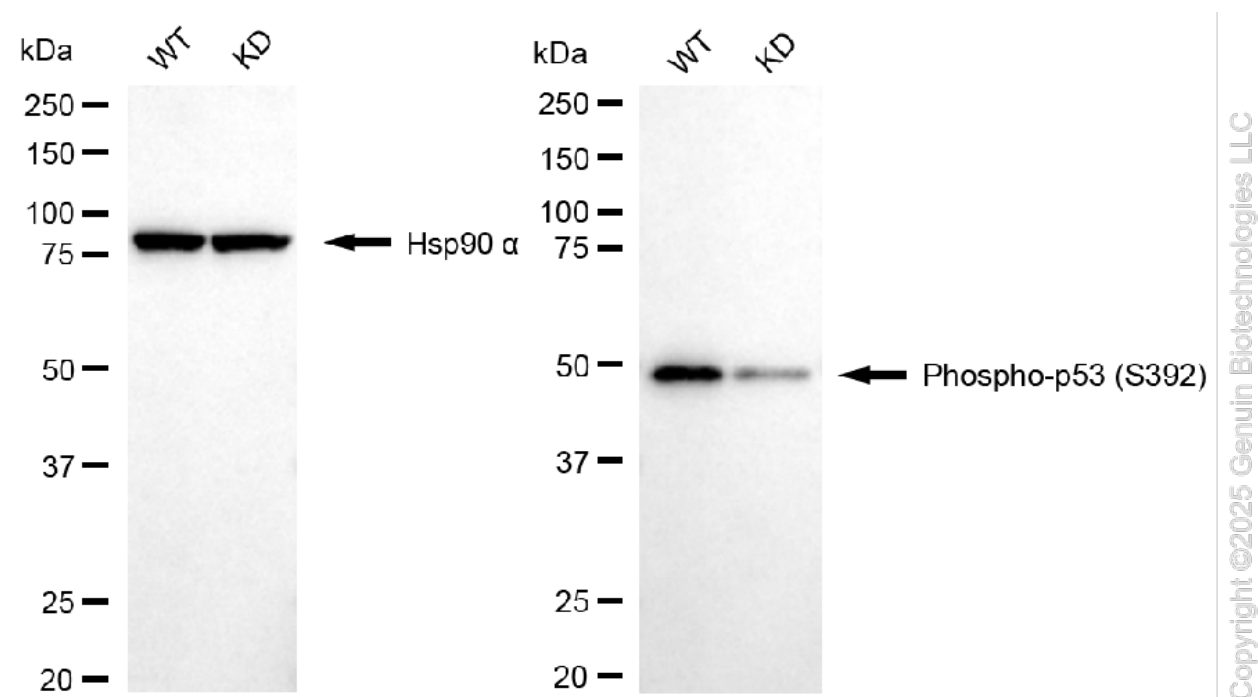
ORDERS

SALES@GENUINBIOTECH.COM
FAX: +1-540-855-7041

WWW.GENUINBIOTECH.COM

KD-Validated Anti-Phospho-p53 (S392) Recombinant Rabbit Monoclonal Antibody

PAGE 4



Western blotting analysis using anti-phospho-p53 (S392) antibody (Cat#61663). Phospho-p53 (S392) expression in wild type (WT) and TP53 knockdown (KD) HSHC cells with 20 µg of total cell lysates. Hsp90 α serves as a loading control. The blot was incubated with anti-phospho-p53 (S392) antibody (Cat#61663, 1:5,000) and HRP-conjugated goat anti-rabbit secondary antibody (Cat#201, 1:20,000) respectively. Image was developed using NaQ™ ECL Substrate Kit (Cat#716).

SUPPORT

SUPPORT@GENUINBIOTECH.COM
TEL: +1-540-855-7041

ORDERS

SALES@GENUINBIOTECH.COM
FAX: +1-540-855-7041

WWW.GENUINBIOTECH.COM