

KD-Validated Anti-Translocator Protein Recombinant Rabbit Monoclonal Antibody



Catalog #: 61665

Aliases

TSPO; Translocator Protein; PKBS; PBR; MBR; TSPO1; MDRC; Pk18; BZRP; DBI; IBP; Peripheral-Type Benzodiazepine Receptor; Mitochondrial Benzodiazepine Receptor; Putative Peripheral Benzodiazepine Receptor-Related Protein; Peripheral-Type Benzodiazepine Receptor/Recognition Site; Benzodiazepine Peripheral Binding Site; Benzodiazepine Receptor (Peripheral); Translocator Protein (18kDa); BPBS; PTBR; PBRs; PBS

Background

Gene Name: TSPO

NCBI Gene Entry: [706](#)

UniProt Entry: [P30536](#)

Application Information

Molecular Weight: Predicted, 19 kDa; observed, 15 kDa

Clonality: Rabbit monoclonal antibody

Clone ID: 25GB3230

Species Reactivity: Human, mouse

Applications Tested: Western blotting (WB), flow cytometry (FCM), immunocytochemistry (IC)

Immunogen

A synthesized peptide derived from human PBR

Isotype

Rabbit IgG

Storage Buffer

Supplied in PBS (pH 7.4) containing 50% glycerol, and 0.02% sodium azide.

Storage

Store at -20 °C for one year.

Recommended Dilutions

Western blotting (WB): 1:2,000-1:10,000

Flow Cytometry (FCM): 1:2,000

Immunocytochemistry (IC): 1:100-1:1,000

SUPPORT

SUPPORT@GENUINBIOTECH.COM
TEL: +1-540-855-7041

ORDERS

SALES@GENUINBIOTECH.COM
FAX: +1-540-855-7041

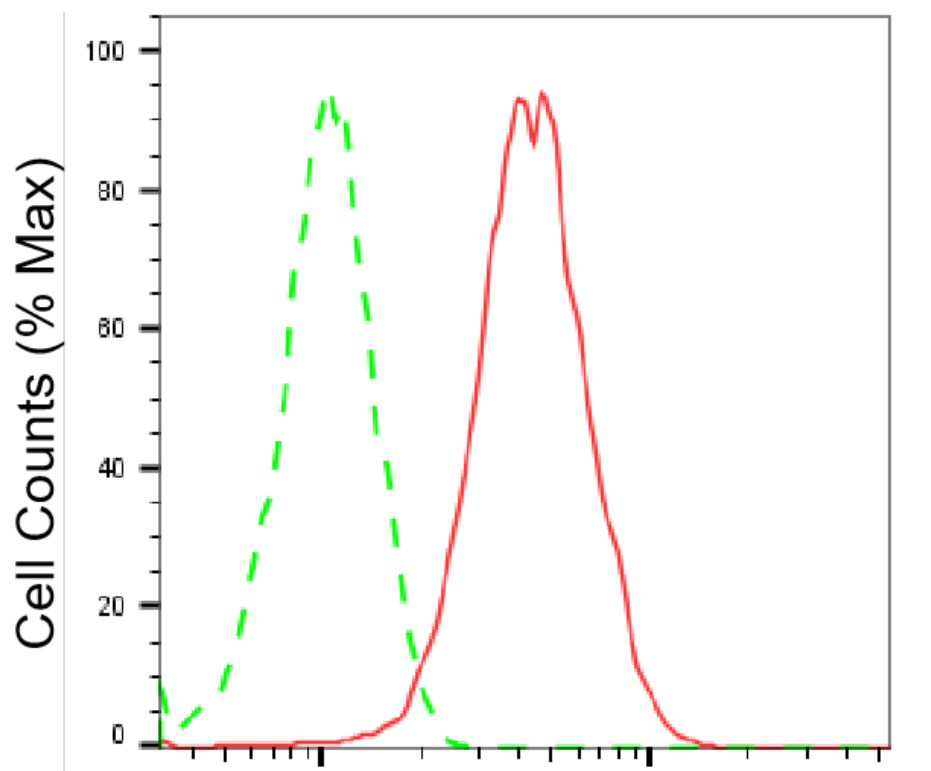
WWW.GENUINBIOTECH.COM

KD-Validated Anti-Translocator Protein Recombinant Rabbit Monoclonal Antibody

PAGE 2

Note: This product is for research use only.

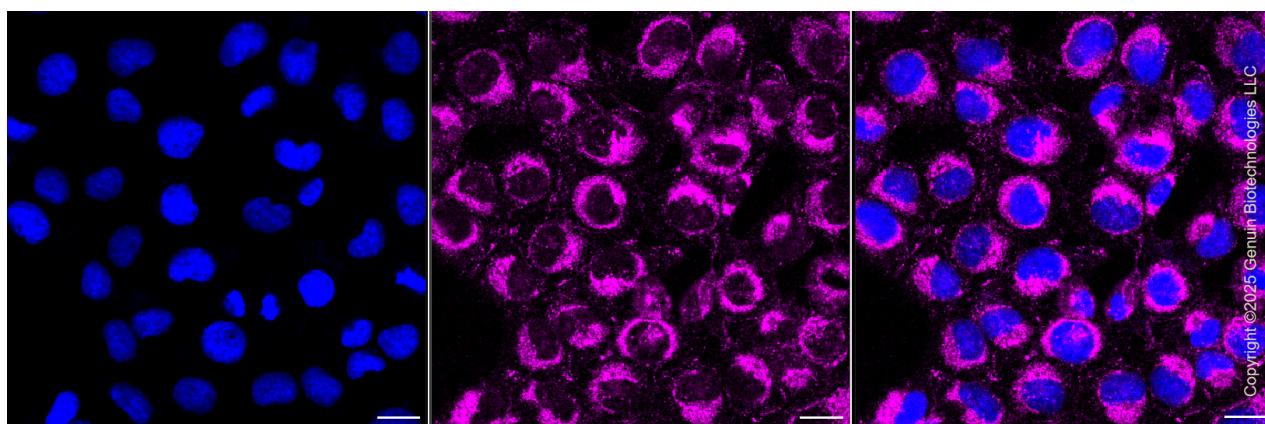
Validation Data



Copyright ©2025 Genuin Biotechnologies LLC

TSPO-Alexa Fluor® 647

Flow cytometric analysis of TSPO expression in HT-1080 cells using anti-TSPO antibody (Cat#61665, 1:2,000). Green, isotype control; red, TSPO.



Copyright ©2025 Genuin Biotechnologies LLC

Immunocytochemical staining of HT-1080 cells with anti-TSPO antibody (Cat#61665, 1:1,000). Nuclei were stained blue with DAPI; TSPO was stained magenta with Alexa Fluor® 647. Images were taken using Leica stellaris 5. Protein abundance based on laser Intensity and smart gain:

SUPPORT

SUPPORT@GENUINBIOTECH.COM
TEL: +1-540-855-7041

ORDERS

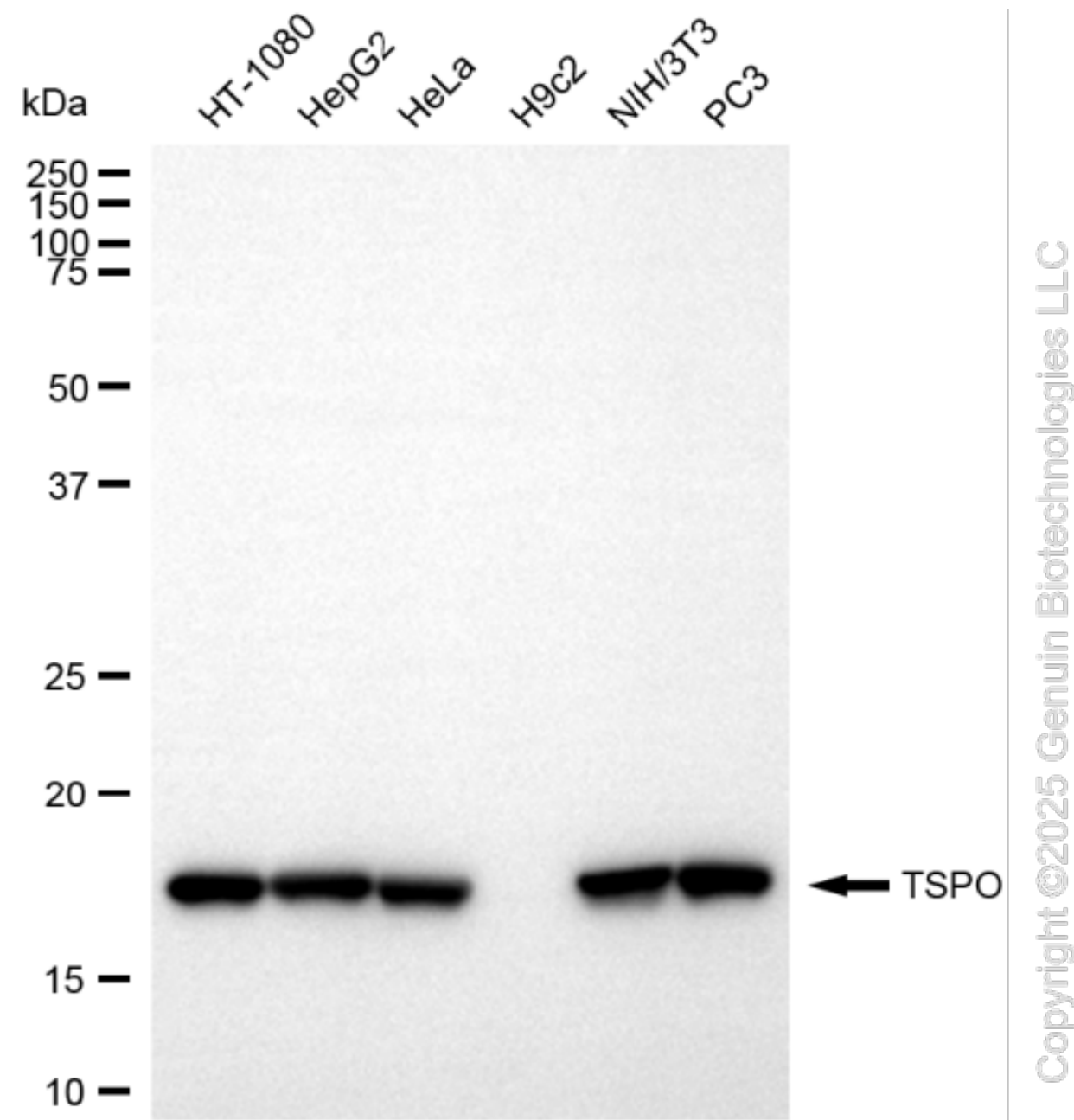
SALES@GENUINBIOTECH.COM
FAX: +1-540-855-7041

WWW.GENUINBIOTECH.COM

KD-Validated Anti-Translocator Protein Recombinant Rabbit Monoclonal Antibody

PAGE 3

Medium. Scale bar, 20 μ m.



Western blotting analysis using anti-TSPO antibody (Cat#61665). Total cell lysates (30 μ g) from various cell lines were loaded and separated by SDS-PAGE. The blot was incubated with anti-TSPO antibody (Cat#61665, 1:10,000) and HRP-conjugated goat anti-rabbit secondary antibody (Cat#201, 1:20,000) respectively. Image was developed using NaQ™ ECL Substrate Kit (Cat#716).

SUPPORT

SUPPORT@GENUINBIOTECH.COM
TEL: +1-540-855-7041

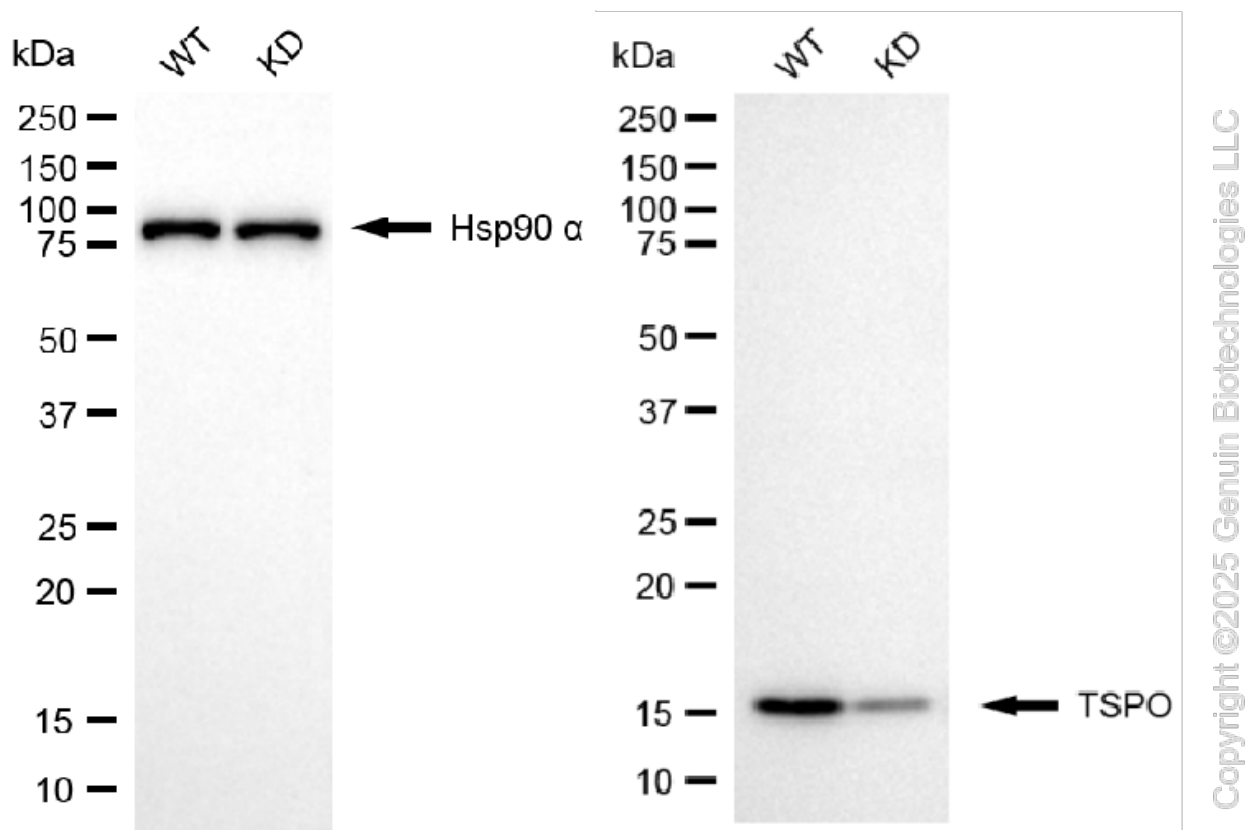
ORDERS

SALES@GENUINBIOTECH.COM
FAX: +1-540-855-7041

WWW.GENUINBIOTECH.COM

KD-Validated Anti-Translocator Protein Recombinant Rabbit Monoclonal Antibody

PAGE 4



Western blotting analysis using anti-TSPO antibody (Cat#61665). TSPO expression in wild type (WT) and TSPO knockdown (KD) HSHC cells with 10 µg of total cell lysates. Hsp90 α serves as a loading control. The blot was incubated with anti-TSPO antibody (Cat#61665, 1:10,000) and HRP-conjugated goat anti-rabbit secondary antibody (Cat#201, 1:20,000) respectively. Image was developed using NaQ™ ECL Substrate Kit (Cat#716).

SUPPORT

SUPPORT@GENUINBIOTECH.COM
TEL: +1-540-855-7041

ORDERS

SALES@GENUINBIOTECH.COM
FAX: +1-540-855-7041

WWW.GENUINBIOTECH.COM