

# KD-Validated Anti-Phospho-eIF4E (S209) Recombinant Rabbit Monoclonal Antibody



**Catalog #: 61666**

## Aliases

EIF4E; Eukaryotic Translation Initiation Factor 4E; EIF4EL1; EIF4E1; EIF4F; MRNA Cap-Binding Protein; EIF-4F 25 KDa Subunit; EIF-4E; Eukaryotic Translation Initiation Factor 4E-Like 1; AUTS19; EIF4E; CBP

## Background

Gene Name: EIF4E

NCBI Gene Entry: [1977](#)

UniProt Entry: [P06730](#)

## Application Information

Molecular Weight: Predicted, 25 kDa, observed, 25 kDa

Clonality: Rabbit monoclonal antibody

Clone ID: 25GB3235

Species Reactivity: Human, mouse, rat

Applications Tested: Western blotting (WB), flow cytometry (FCM), immunocytochemistry (IC)

## Immunogen

A synthesized peptide derived from human Phospho-eIF4E (S209)

## Isotype

Rabbit IgG

## Storage Buffer

Supplied in PBS (pH 7.4) containing 50% glycerol, and 0.02% sodium azide.

## Storage

Store at -20 °C for one year.

## Recommended Dilutions

Western blotting (WB): 1:2,000-1:10,000

Flow Cytometry (FCM): 1:2,000

Immunocytochemistry (IC): 1:100-1:1,000

**Note:** This product is for research use only.

---

### SUPPORT

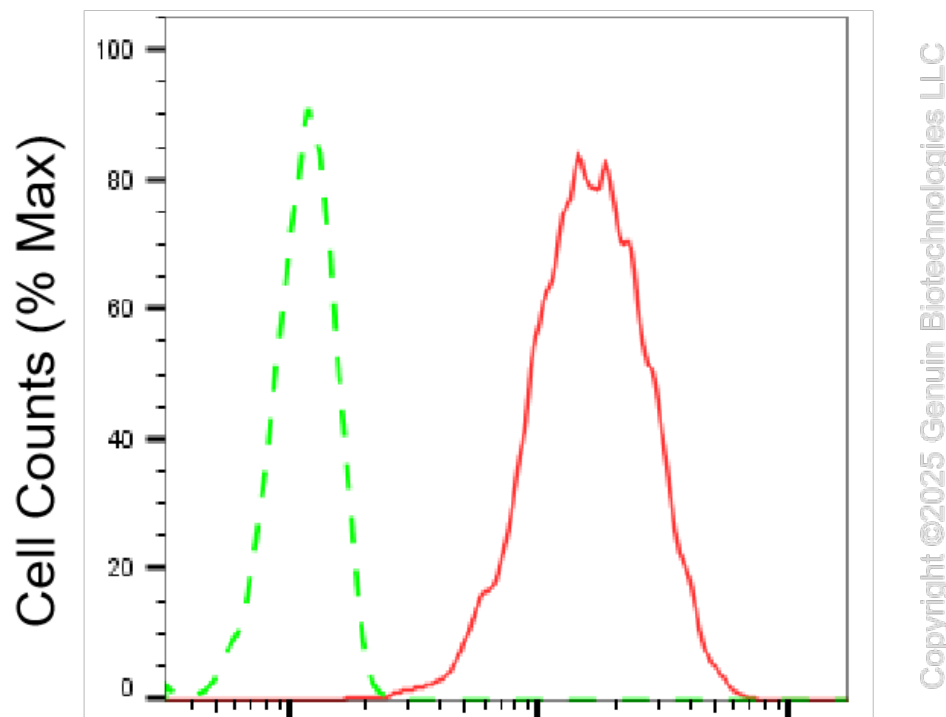
SUPPORT@GENUINBIOTECH.COM  
TEL: +1-540-855-7041

### ORDERS

SALES@GENUINBIOTECH.COM  
FAX: +1-540-855-7041

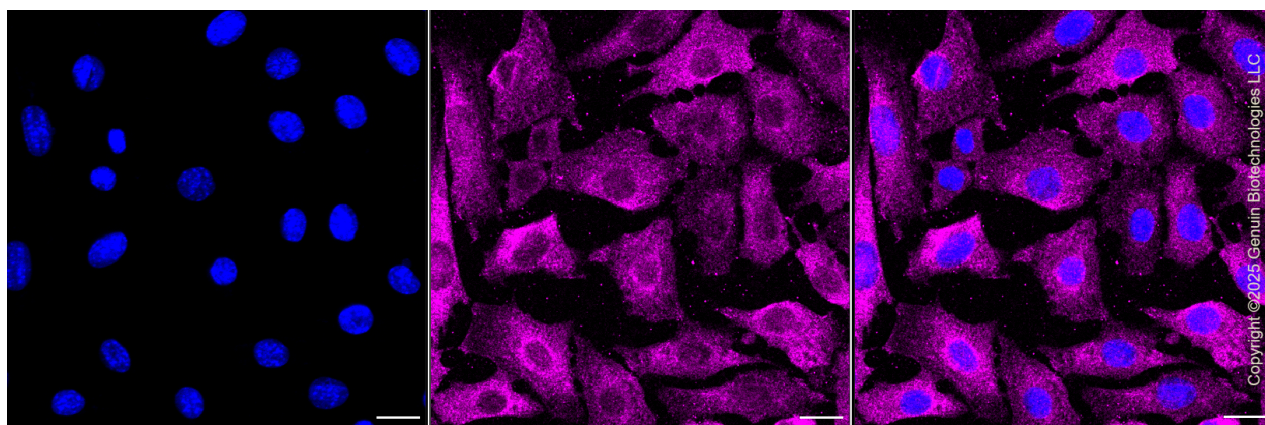
[WWW.GENUINBIOTECH.COM](http://WWW.GENUINBIOTECH.COM)

**Validation Data**



**Phospho-eIF4E (S209)-Alexa Fluor® 647**

Flow cytometric analysis of Phospho-eIF4E (S209) expression in C2C12 cells using anti-Phospho-eIF4E (S209) antibody (Cat#61666, 1:2,000). Green, isotype control; red, Phospho-eIF4E (S209).



Immunocytochemical staining of C2C12 cells with Phospho-eIF4E (S209) antibody (Cat#61666, 1:1,000). Nuclei were stained blue with DAPI; Phospho-eIF4E (S209) was stained magenta with Alexa Fluor® 647. Images were taken using Leica stellaris 5. Protein abundance based on laser Intensity and smart gain: High. Scale bar, 20  $\mu$ m.

**SUPPORT**

SUPPORT@GENUINBIOTECH.COM  
TEL: +1-540-855-7041

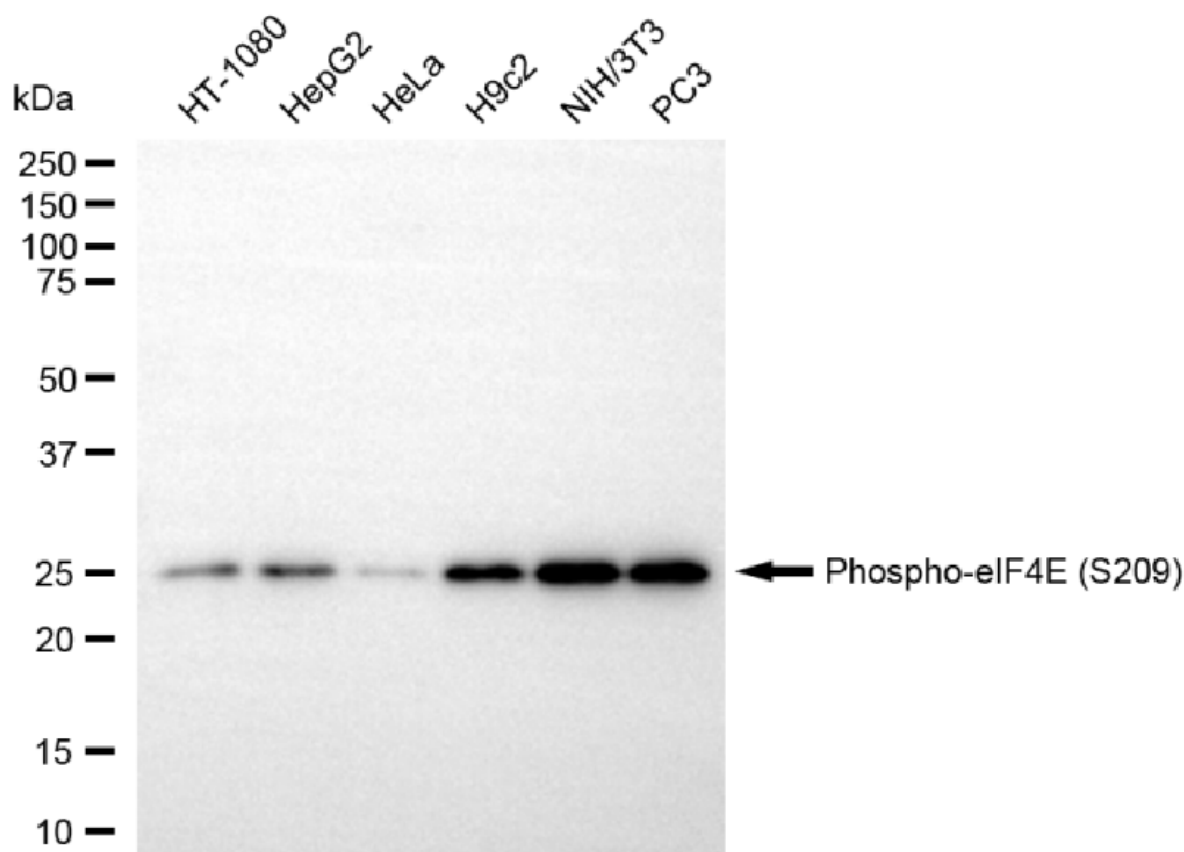
**ORDERS**

SALES@GENUINBIOTECH.COM  
FAX: +1-540-855-7041

**WWW.GENUINBIOTECH.COM**

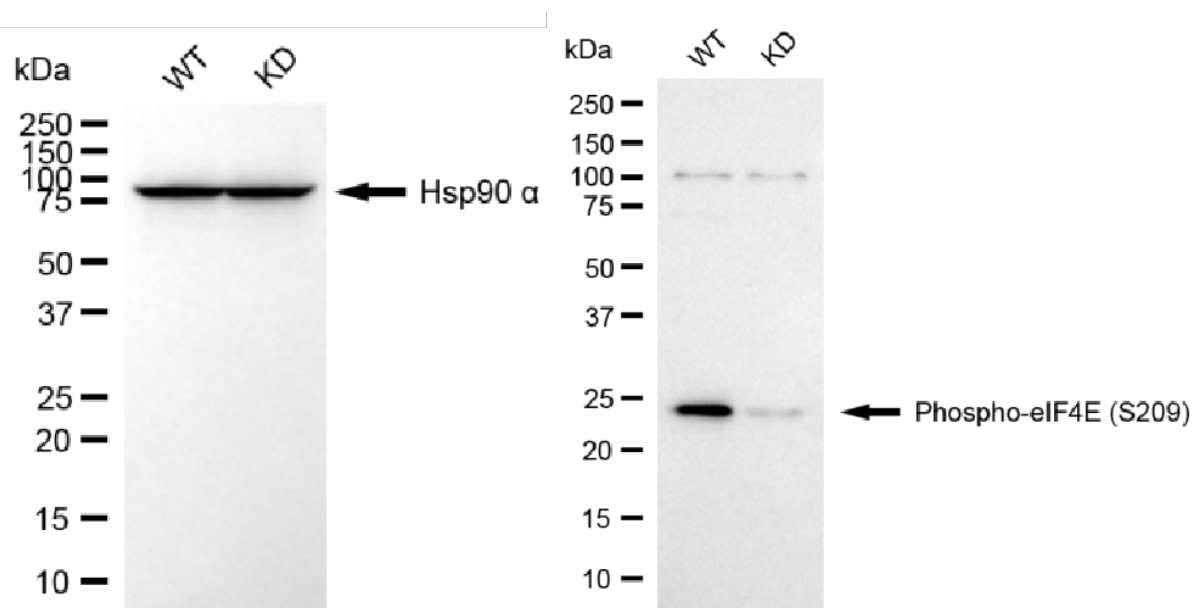
## KD-Validated Anti-Phospho-eIF4E (S209) Recombinant Rabbit Monoclonal Antibody

PAGE 3



Copyright ©2025 Genuin Biotechnologies LLC

Western blotting analysis using anti-phospho-eIF4E (S209) antibody (Cat#61666). Total cell lysates (30  $\mu$ g) from various cell lines were loaded and separated by SDS-PAGE. The blot was incubated with anti-phospho-eIF4E (S209) antibody (Cat#61666, 1:10,000) and HRP-conjugated goat anti-rabbit secondary antibody (Cat#201, 1:20,000) respectively. Image was developed using NaQ™ ECL Substrate Kit (Cat#716).



Copyright ©2025 Genuin Biotechnologies LLC

### SUPPORT

SUPPORT@GENUINBIOTECH.COM  
TEL: +1-540-855-7041

### ORDERS

SALES@GENUINBIOTECH.COM  
FAX: +1-540-855-7041

WWW.GENUINBIOTECH.COM

## **KD-Validated Anti-Phospho-eIF4E (S209) Recombinant Rabbit Monoclonal Antibody**

PAGE 4

Western blotting analysis using anti-phospho-eIF4E (S209) antibody (Cat#61666). Phospho-eIF4E (S209) expression in wild type (WT) and EIF4E knockdown (KD) HSHC cells with 20 µg of total cell lysates. Hsp90  $\alpha$  serves as a loading control. The blot was incubated with anti-phospho-eIF4E (S209) antibody (Cat#61666, 1:10,000) and HRP-conjugated goat anti-rabbit secondary antibody (Cat#201, 1:20,000) respectively. Image was developed using NaQ™ ECL Substrate Kit (Cat#716).

---

### **SUPPORT**

SUPPORT@GENUINBIOTECH.COM  
TEL: +1-540-855-7041

### **ORDERS**

SALES@GENUINBIOTECH.COM  
FAX: +1-540-855-7041

**WWW.GENUINBIOTECH.COM**