

KD-Validated Anti-Phospho-Retinoblastoma (S807) Recombinant Rabbit Monoclonal



Catalog #: 61667

Aliases

RB1; RB Transcriptional Corepressor 1; PPP1R130; RB; Protein Phosphatase 1, Regulatory Subunit 130; Prepro-Retinoblastoma-Associated Protein; Retinoblastoma-Associated Protein; Retinoblastoma 1; P110-RB1; P105-Rb; Pp110; OSRC; PRb; Retinoblastoma Susceptibility Protein; Osteosarcoma; Rb

Background

Gene Name: RB1

NCBI Gene Entry: [5925](#)

UniProt Entry: [P06400](#)

Application Information

Molecular Weight: Predicted, 106 kDa, observed, 106 kDa

Clonality: Rabbit monoclonal antibody

Clone ID: 25GB3245

Species Reactivity: Human, mouse, rat

Applications Tested: Western blotting (WB), flow cytometry (FCM)

Immunogen

A synthesized peptide derived from human Phospho-Retinoblastoma (S807)

Isotype

Rabbit IgG

Storage Buffer

Supplied in PBS (pH 7.4) containing 50% glycerol, and 0.02% sodium azide.

Storage

Store at -20 °C for one year.

Recommended Dilutions

Western blotting (WB): 1:1,000-1:5,000

Flow Cytometry (FCM): 1:2,000

Note: This product is for research use only.

SUPPORT

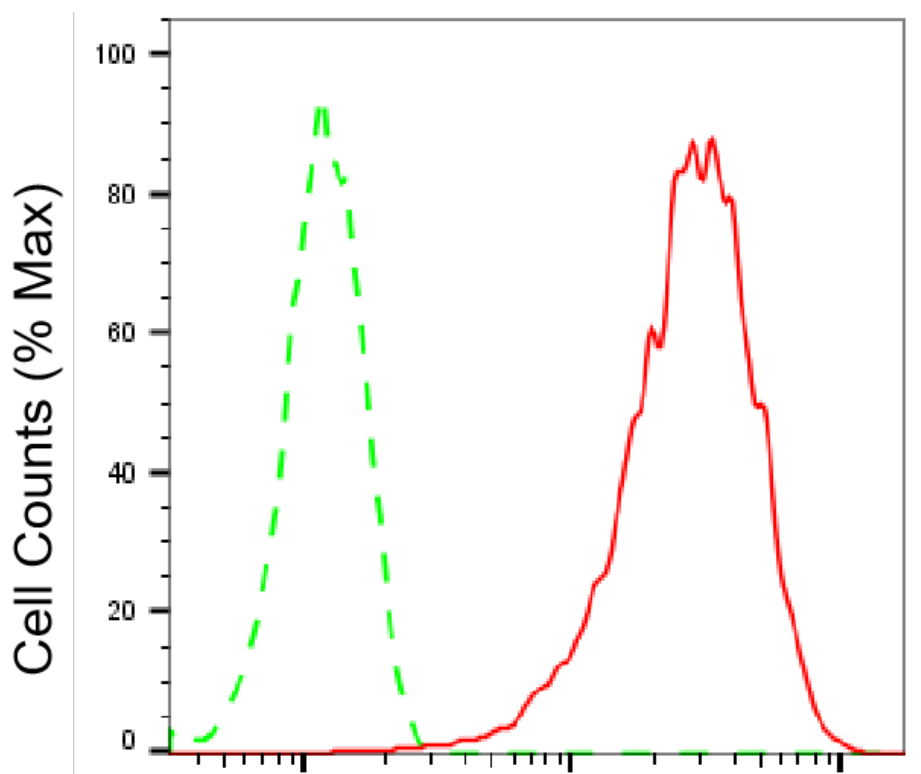
SUPPORT@GENUINBIOTECH.COM
TEL: +1-540-855-7041

ORDERS

SALES@GENUINBIOTECH.COM
FAX: +1-540-855-7041

WWW.GENUINBIOTECH.COM

Validation Data



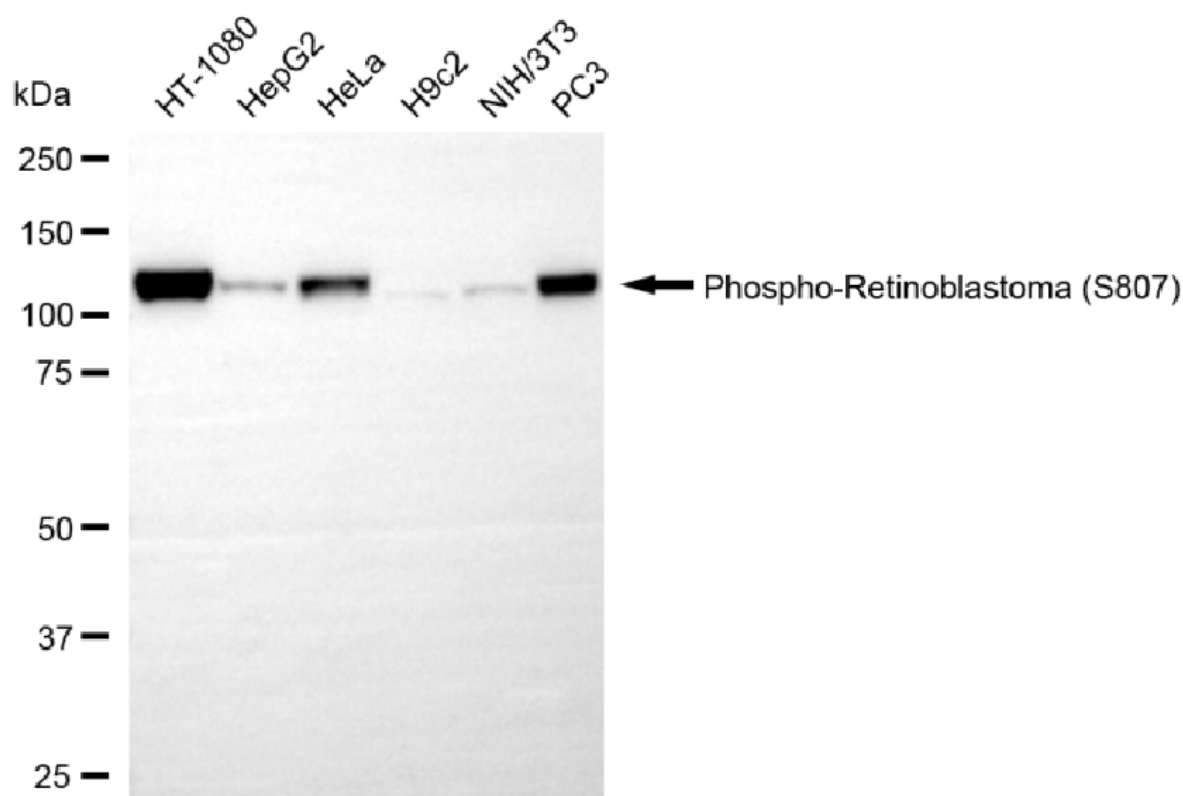
Copyright ©2025 Genuin Biotechnologies LLC

Phospho-Retinoblastoma (S807)-Alexa Fluor® 647

Flow cytometric analysis of Phospho-Retinoblastoma (S807) expression in HAP-1 cells using anti-Phospho-Retinoblastoma (S807) antibody (Cat#61667, 1:2,000). Green, isotype control; red, Phospho-Retinoblastoma (S807).

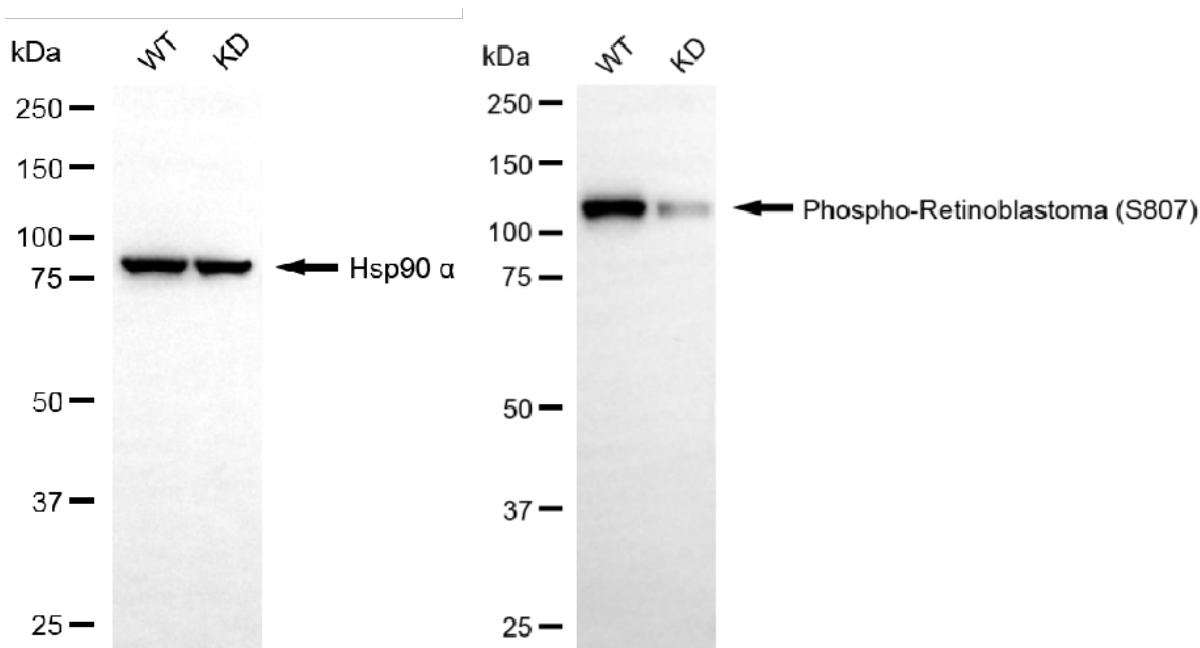
KD-Validated Anti-Phospho-Retinoblastoma (S807) Recombinant Rabbit Monoclonal

PAGE 3



Copyright ©2025 Genuin Biotechnologies LLC

Western blotting analysis using anti-phospho-retinoblastoma (S807) antibody (Cat#61667). Total cell lysates (30 µg) from various cell lines were loaded and separated by SDS-PAGE. The blot was incubated with anti-phospho-retinoblastoma (S807) antibody (Cat#61667, 1:5,000) and HRP-conjugated goat anti-rabbit secondary antibody (Cat#201, 1:20,000) respectively. Image was developed using NaQ™ ECL Substrate Kit (Cat#716).



Copyright ©2025 Genuin Biotechnologies LLC

SUPPORT

SUPPORT@GENUINBIOTECH.COM
TEL: +1-540-855-7041

ORDERS

SALES@GENUINBIOTECH.COM
FAX: +1-540-855-7041

WWW.GENUINBIOTECH.COM

KD-Validated Anti-Phospho-Retinoblastoma (S807) Recombinant Rabbit Monoclonal

PAGE 4

Western blotting analysis using anti-phospho-retinoblastoma (S807) antibody (Cat#61667). Phospho-retinoblastoma (S807) expression in wild-type (WT) and RB1 knockdown (KD) HSHC cells with 20 µg of total cell lysates. Hsp90 α serves as a loading control. The blot was incubated with anti-phospho-retinoblastoma (S807) antibody (Cat#61667, 1:5,000) and HRP-conjugated goat anti-rabbit secondary antibody (Cat#201, 1:20,000) respectively. Image was developed using NaQ™ ECL Substrate Kit (Cat#716).

SUPPORT

SUPPORT@GENUINBIOTECH.COM
TEL: +1-540-855-7041

ORDERS

SALES@GENUINBIOTECH.COM
FAX: +1-540-855-7041

WWW.GENUINBIOTECH.COM