

KD-Validated Anti-Thymidylate Synthase Recombinant Rabbit Monoclonal Antibody



Catalog #: 61673

Aliases

TYMS; Thymidylate Synthetase; HsT422; Tsase; TMS; TS; Thymidylate Synthase; EC 2.1.1.45; TSase; DKCD

Background

Gene Name: TYMS

NCBI Gene Entry: [7298](#)

UniProt Entry: [P04818](#)

Application Information

Molecular Weight: Predicted, 36 kDa, observed, 36 kDa

Clonality: Rabbit monoclonal antibody

Clone ID: 25GB3300

Species Reactivity: Human, mouse

Applications Tested: Western blotting (WB), flow cytometry (FCM), immunocytochemistry (IC)

Immunogen

A synthesized peptide derived from human Thymidylate Synthase

Isotype

Rabbit IgG

Storage Buffer

Supplied in PBS (pH 7.4) containing 50% glycerol, and 0.02% sodium azide.

Storage

Store at -20 °C for one year.

Recommended Dilutions

Western blotting (WB): 1:1,000-1:5,000

Flow Cytometry (FCM): 1:2,000

Immunocytochemistry (IC): 1:100-1:1,000

Note: This product is for research use only.

Validation Data

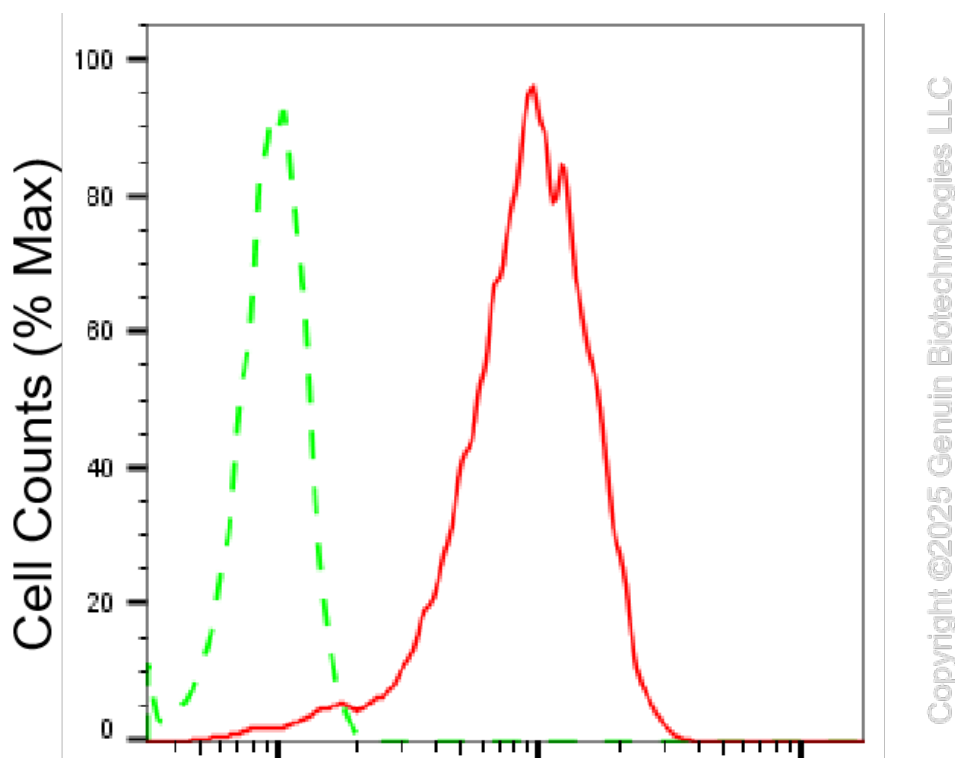
SUPPORT

SUPPORT@GENUINBIOTECH.COM
TEL: +1-540-855-7041

ORDERS

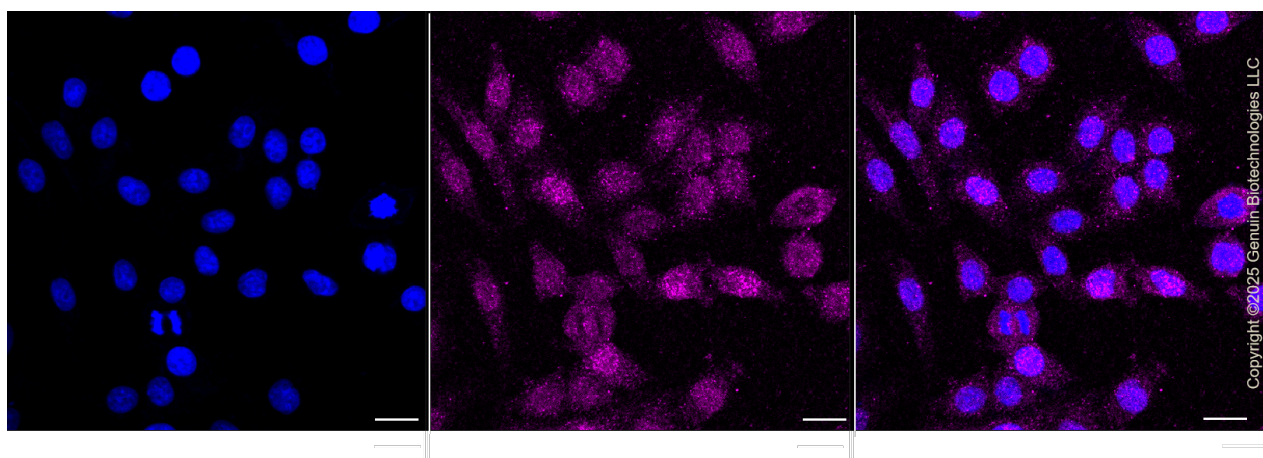
SALES@GENUINBIOTECH.COM
FAX: +1-540-855-7041

WWW.GENUINBIOTECH.COM



Thymidylate synthetase-Alexa Fluor® 647

Flow cytometric analysis of Thymidylate synthetase expression in HepG2 cells using anti-Thymidylate synthetase antibody (Cat#61673, 1:2,000). Green, isotype control; red, Thymidylate synthetase.



Immunocytochemical staining of HepG2 cells with anti-Thymidylate synthetase antibody (Cat#61673, 1:1,000). Nuclei were stained blue with DAPI; Thymidylate synthetase was stained magenta with Alexa Fluor® 647. Images were taken using Leica stellaris 5. Protein abundance based on laser Intensity and smart gain: Medium. Scale bar, 20 μ m.

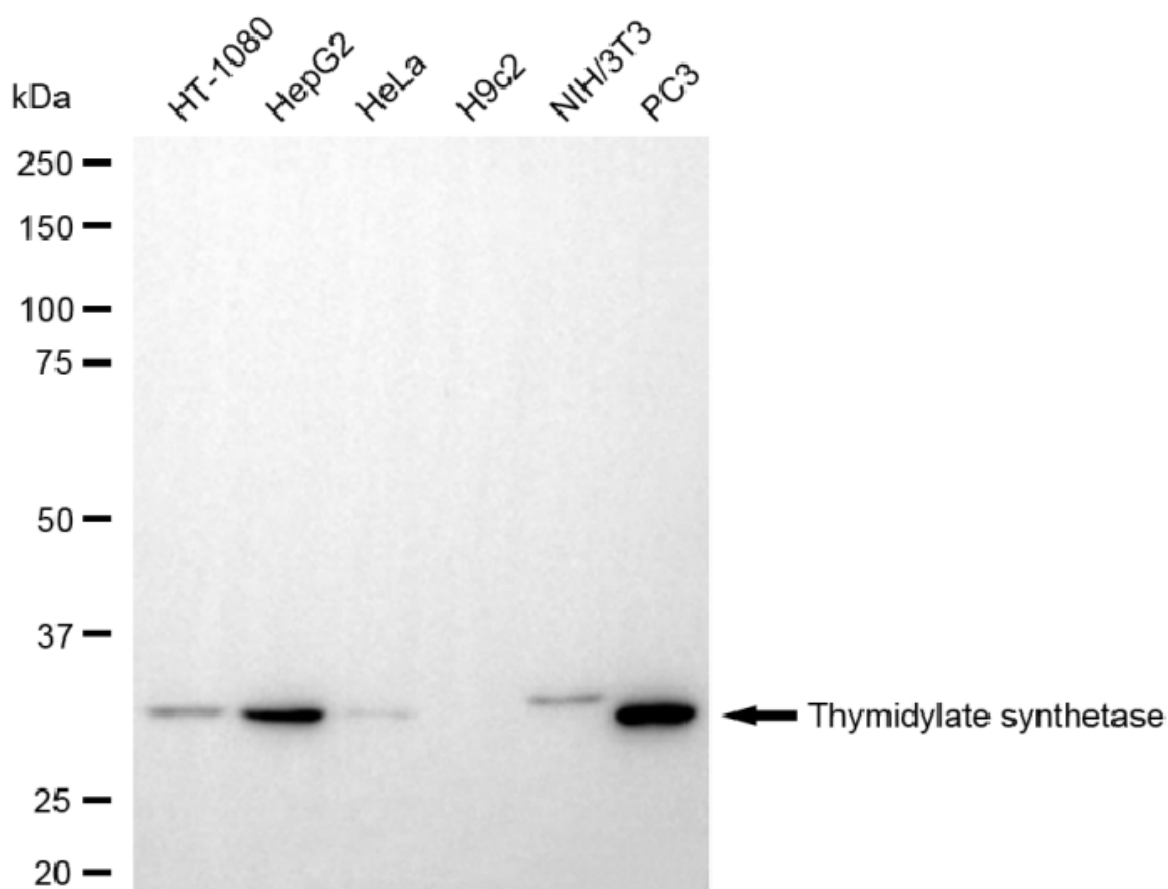
SUPPORT

SUPPORT@GENUINBIOTECH.COM
TEL: +1-540-855-7041

ORDERS

SALES@GENUINBIOTECH.COM
FAX: +1-540-855-7041

WWW.GENUINBIOTECH.COM

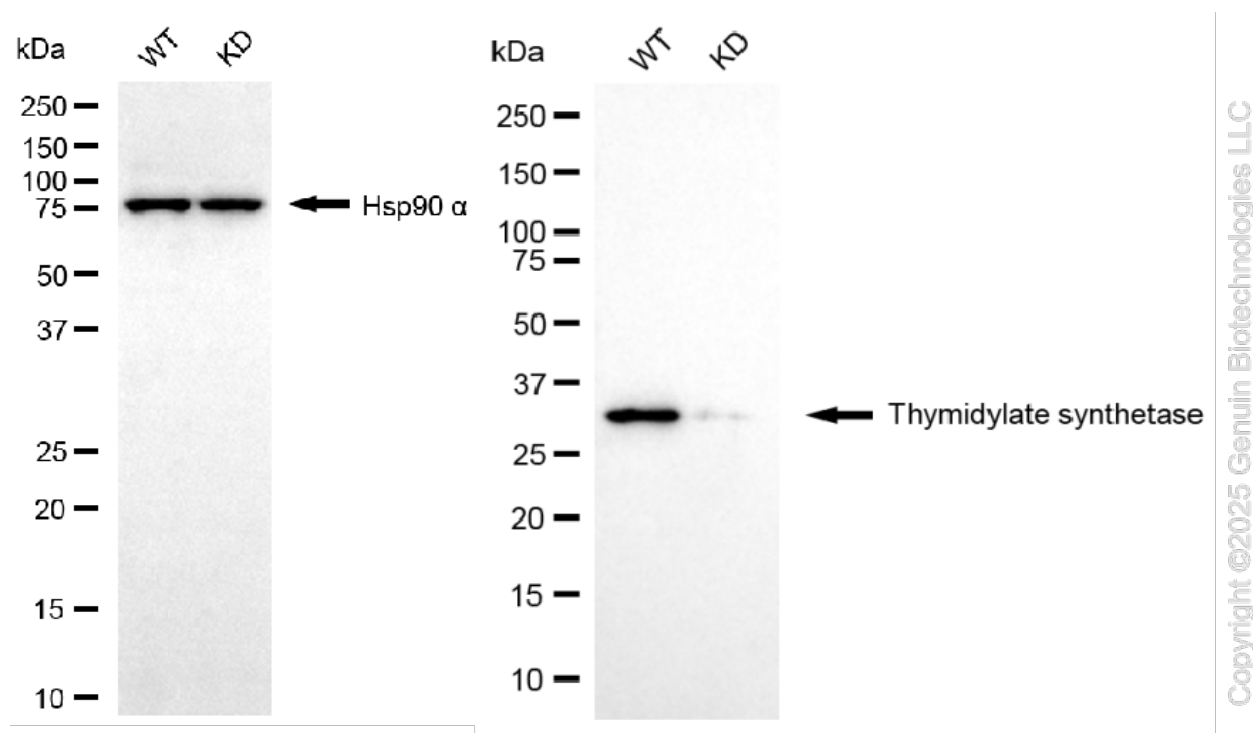


Copyright ©2025 Genuin Biotechnologies LLC

Western blotting analysis using anti-thymidylate synthetase antibody (Cat#61673). Total cell lysates (30 μ g) from various cell lines were loaded and separated by SDS-PAGE. The blot was incubated with anti-thymidylate synthetase antibody (Cat#61673, 1:5,000) and HRP-conjugated goat anti rabbit secondary antibody (Cat#201, 1:20,000) respectively. Image was developed using NaQ™ ECL Substrate Kit (Cat#716).

KD-Validated Anti-Thymidylate Synthase Recombinant Rabbit Monoclonal Antibody

PAGE 4



Western blotting analysis using anti-thymidylate synthetase antibody (Cat#61673). Thymidylate synthetase expression in wild type (WT) and thymidylate synthetase (TYMS) knockdown (KD) HSHC cells with 20 µg of total cell lysates. Hsp90 α serves as a loading control. The blot was incubated with anti-thymidylate synthetase antibody (Cat#61673, 1:5,000) and HRP-conjugated goat anti-rabbit secondary antibody (Cat#201, 1:20,000) respectively. Image was developed using NaQ™ ECL Substrate Kit (Cat#716).

SUPPORT

SUPPORT@GENUINBIOTECH.COM
TEL: +1-540-855-7041

ORDERS

SALES@GENUINBIOTECH.COM
FAX: +1-540-855-7041

WWW.GENUINBIOTECH.COM