

KD-Validated Anti-Kinesin family member 5B Recombinant Rabbit Monoclonal Antibody



Catalog #: 61677

Aliases

KIF5B; Kinesin Family Member 5B; UKHC; KNS; Ubiquitous Kinesin Heavy Chain; KNS1; Conventional Kinesin Heavy Chain; Kinesin-1 Heavy Chain; Epididymis Secretory Protein Li 61; Kinesin 1 (110-120kD); Kinesin Heavy Chain; HEL-S-61; KINH

Background

Gene Name: KIF5B

NCBI Gene Entry: [3799](#)

UniProt Entry: [P33176](#)

Application Information

Molecular Weight: Predicted, 110 kDa, observed, 120 kD

Clonality: Rabbit monoclonal antibody

Clone ID: 23GB4030

Species Reactivity: Human, mouse, rat

Applications Tested: Western blotting (WB), flow cytometry (FCM), immunocytochemistry (IC)

Immunogen

A synthesized peptide derived from human KIF5B

Isotype

Rabbit IgG

Storage Buffer

Supplied in PBS (pH 7.4) containing 50% glycerol, and 0.02% sodium azide.

Storage

Store at -20 °C for one year.

Recommended Dilutions

Western Blotting (WB): 1:1,000-1:5,000

Flow Cytometry (FCM): 1:2,000

Immunocytochemistry (IC): 1:100-1:1,000

Note: This product is for research use only.

SUPPORT

SUPPORT@GENUINBIOTECH.COM
TEL: +1-540-855-7041

ORDERS

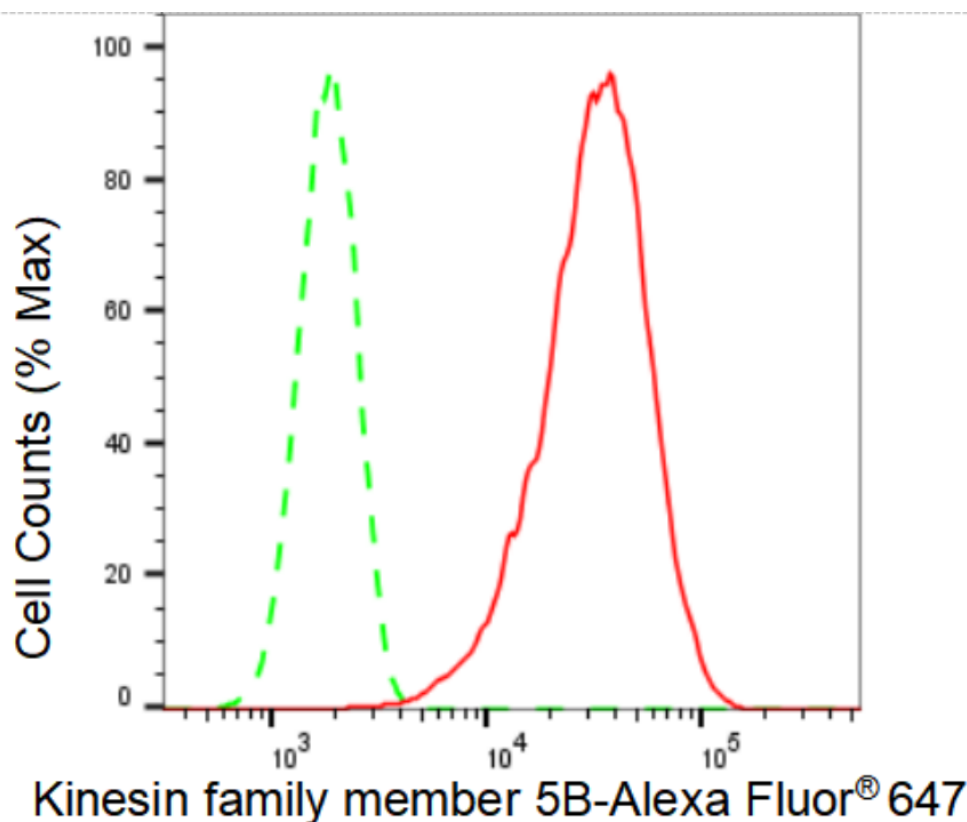
SALES@GENUINBIOTECH.COM
FAX: +1-540-855-7041

WWW.GENUINBIOTECH.COM

KD-Validated Anti-Kinesin family member 5B Recombinant Rabbit Monoclonal Antibody

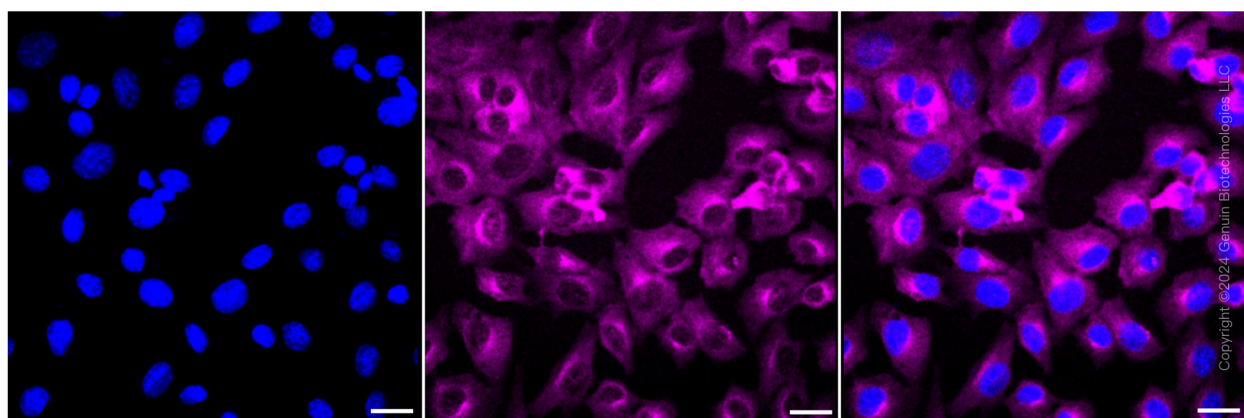
PAGE 2

Validation Data



Copyright ©2024 Genuin Biotechnologies LLC

Flow cytometric analysis of Kinesin family member 5B expression in C2C12 cells using Kinesin family member 5B antibody (Cat#61677, 1:2,000). Green, isotype control; red, Kinesin family member 5B.



Immunocytochemical staining of C2C12 cells with Kinesin family member 5B antibody (Cat#61677, 1:1,000). Nuclei were stained blue with DAPI; Kinesin family member 5B was stained magenta with Alexa Fluor® 647. Images were taken using Leica stellaris 5. Protein abundance based on laser Intensity and smart gain: Medium. Scale bar: 20 µm.

SUPPORT

SUPPORT@GENUINBIOTECH.COM
TEL: +1-540-855-7041

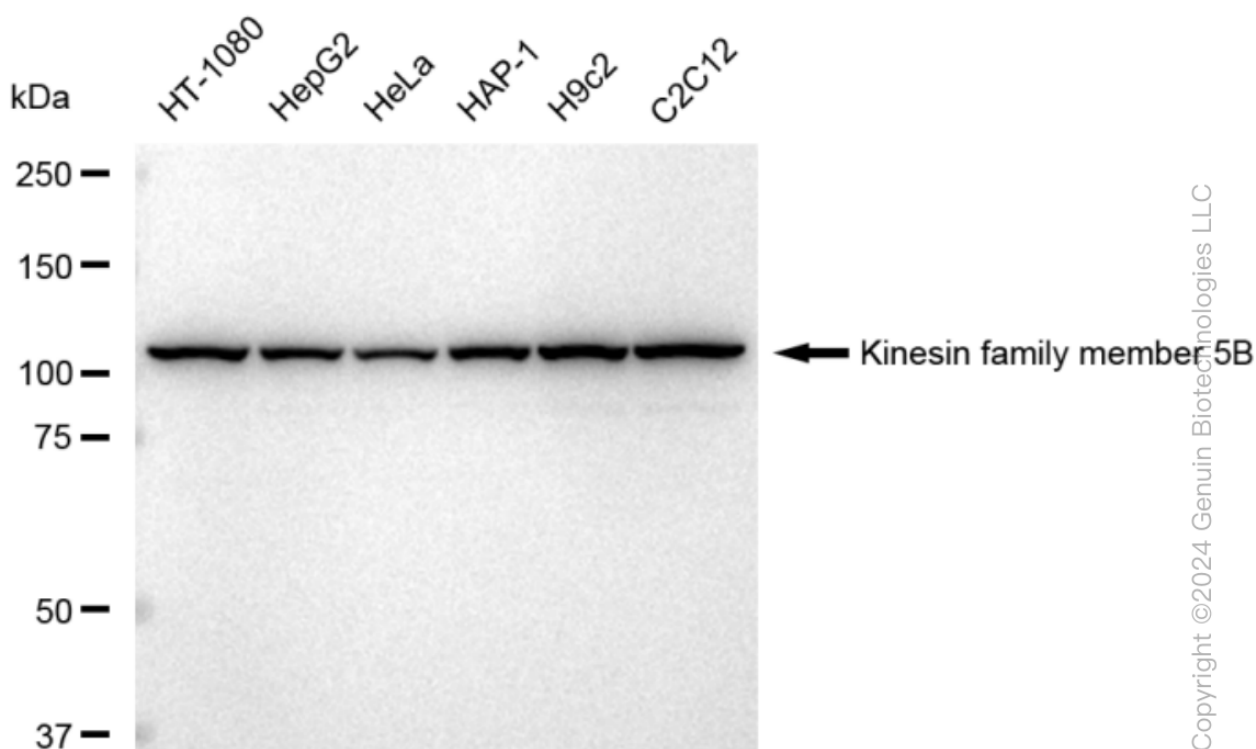
ORDERS

SALES@GENUINBIOTECH.COM
FAX: +1-540-855-7041

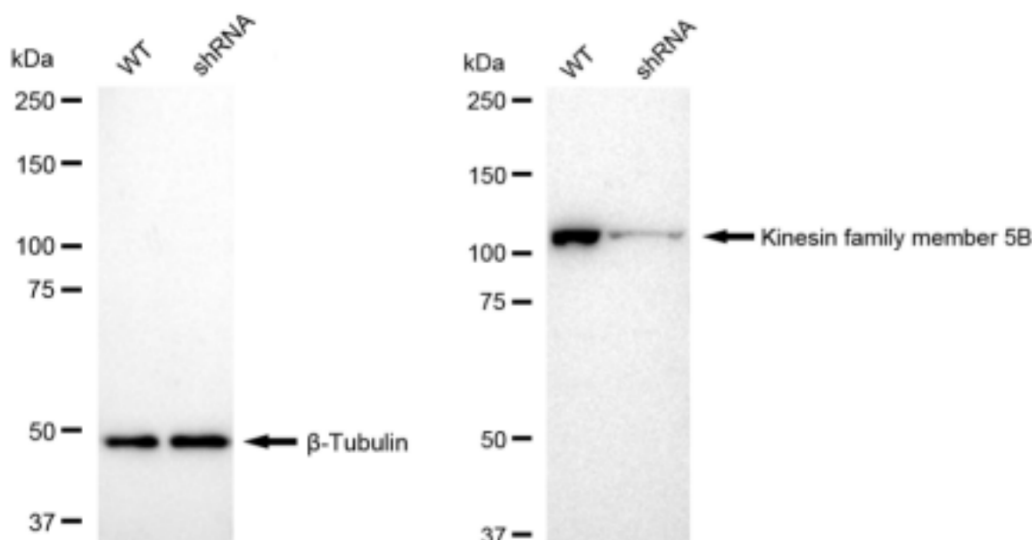
WWW.GENUINBIOTECH.COM

KD-Validated Anti-Kinesin family member 5B Recombinant Rabbit Monoclonal Antibody

PAGE 3



Western blotting analysis using anti-Kinesin family member 5B antibody (Cat#61677). Total cell lysates (30 µg) from various cell lines were loaded and separated by SDS-PAGE. The blot was incubated with anti-Kinesin family member 5B antibody (Cat#61677, 1:5,000) and HRP-conjugated goat anti-rabbit secondary antibody (Cat#201, 1:20,000) respectively. Image was developed using FeQ™ ECL Substrate Kit (Cat#226).



Western blotting analysis using anti-Kinesin family member 5B antibody (Cat#61677). Kinesin family member 5B expression in wild type (WT) and Kinesin family member 5B shRNA

SUPPORT

SUPPORT@GENUINBIOTECH.COM
TEL: +1-540-855-7041

ORDERS

SALES@GENUINBIOTECH.COM
FAX: +1-540-855-7041

WWW.GENUINBIOTECH.COM

KD-Validated Anti-Kinesin family member 5B Recombinant Rabbit Monoclonal Antibody

PAGE 4

knockdown (KD) 293T cells with 30 µg of total cell lysates. β -Tubulin serves as a loading control. The blot was incubated with anti-Kinesin family member 5B antibody (Cat#61677, 1:5,000) and HRP-conjugated goat anti-rabbit secondary antibody (Cat#201, 1:20,000) respectively. Image was developed using FeQ™ ECL Substrate Kit (Cat#226).

SUPPORT

SUPPORT@GENUINBIOTECH.COM
TEL: +1-540-855-7041

ORDERS

SALES@GENUINBIOTECH.COM
FAX: +1-540-855-7041

WWW.GENUINBIOTECH.COM