

KD-Validated Anti-Kinesin family member 23 Recombinant Rabbit Monoclonal Antibody



Catalog #: 61678

Aliases

KIF23; Kinesin Family Member 23; MKLP1; MKLP-1; KNSL5; Kinesin-Like 5 (Mitotic Kinesin-Like Protein 1); Kinesin-Like Protein KIF23; Congenital Dyserythropoietic Anemia, Type III; Mitotic Kinesin-Like Protein 1; Kinesin-Like Protein 5; CDAIII; CDAN3A; CDAN3; CDA3; CHO1

Background

Gene Name: KIF23

NCBI Gene Entry: [9493](#)

UniProt Entry: [Q02241](#)

Application Information

Molecular Weight: Predicted, 110 kDa, observed, 98 kDa

Clonality: Rabbit monoclonal antibody

Clone ID: 23GB4035

Species Reactivity: Human, mouse, rat

Applications Tested: Western blotting (WB), flow cytometry (FCM), immunocytochemistry (IC)

Immunogen

A synthesized peptide derived from human MKLP1

Isotype

Rabbit IgG

Storage Buffer

Supplied in PBS (pH 7.4) containing 50% glycerol, and 0.02% sodium azide.

Storage

Store at -20 °C for one year.

Recommended Dilutions

Western Blotting (WB): 1:1,000-1:5,000

Flow Cytometry (FCM): 1:2,000

Immunocytochemistry (IC): 1:100-1:1,000

SUPPORT

SUPPORT@GENUINBIOTECH.COM
TEL: +1-540-855-7041

ORDERS

SALES@GENUINBIOTECH.COM
FAX: +1-540-855-7041

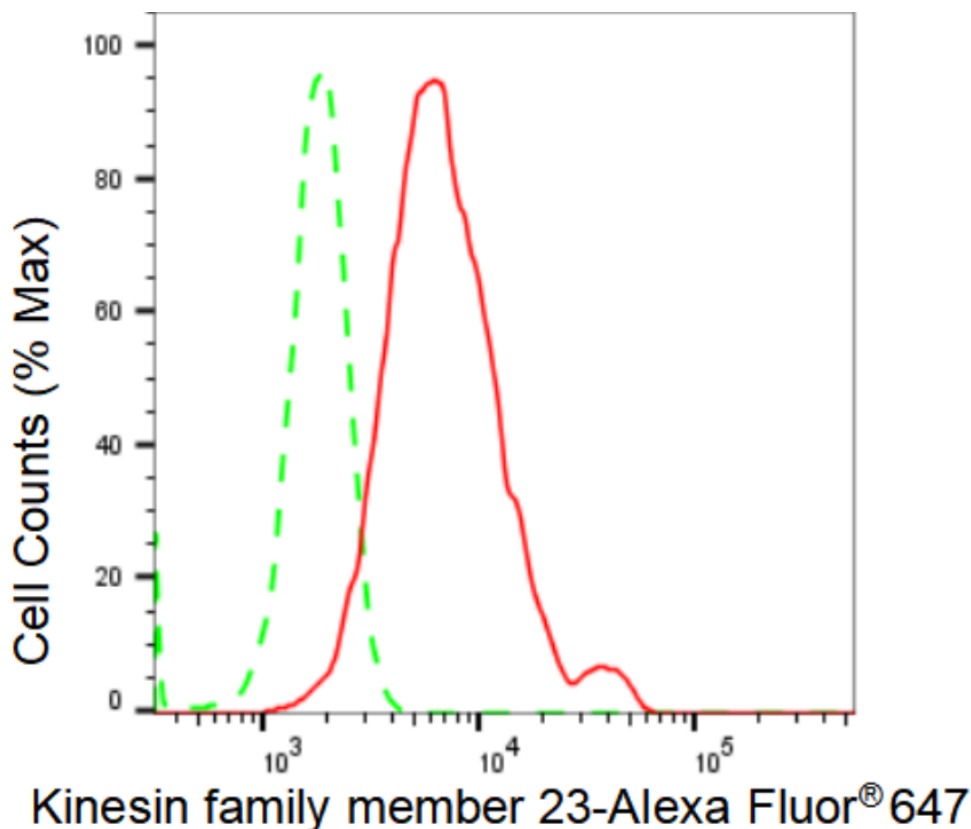
WWW.GENUINBIOTECH.COM

KD-Validated Anti-Kinesin family member 23 Recombinant Rabbit Monoclonal Antibody

PAGE 2

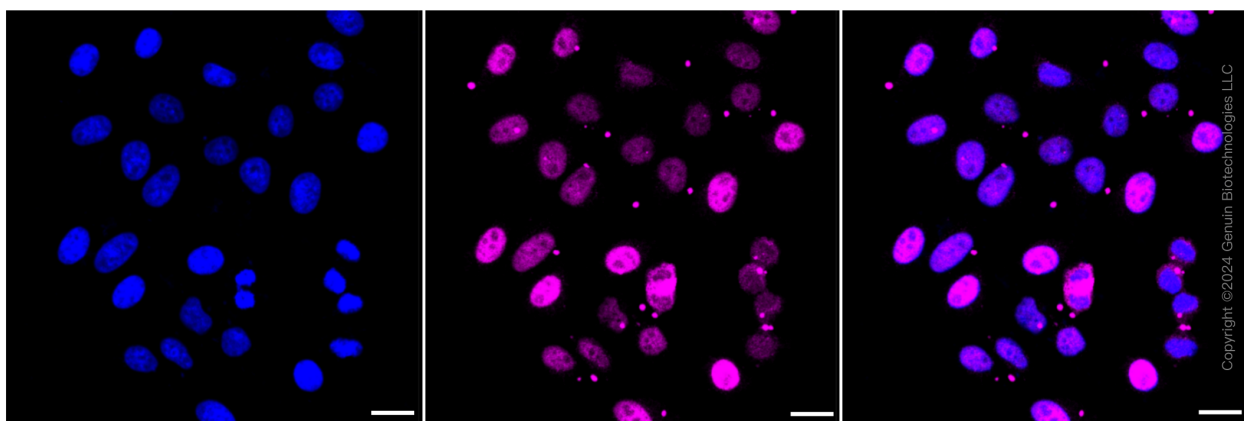
Note: This product is for research use only.

Validation Data



Copyright ©2024 Genuin Biotechnologies LLC

Flow cytometric analysis of Kinesin family member 23 expression in HepG2 cells using Kinesin family member 23 antibody (Cat#61678, 1:2,000). Green, isotype control; red, Kinesin family member 23.



Immunocytochemical staining of HepG2 cells with Kinesin family member 23 antibody (Cat#61678, 1:1,000). Nuclei were stained blue with DAPI; Kinesin family member 23 was stained magenta with Alexa Fluor® 647. Images were taken using Leica stellaris 5. Protein

SUPPORT

SUPPORT@GENUINBIOTECH.COM
TEL: +1-540-855-7041

ORDERS

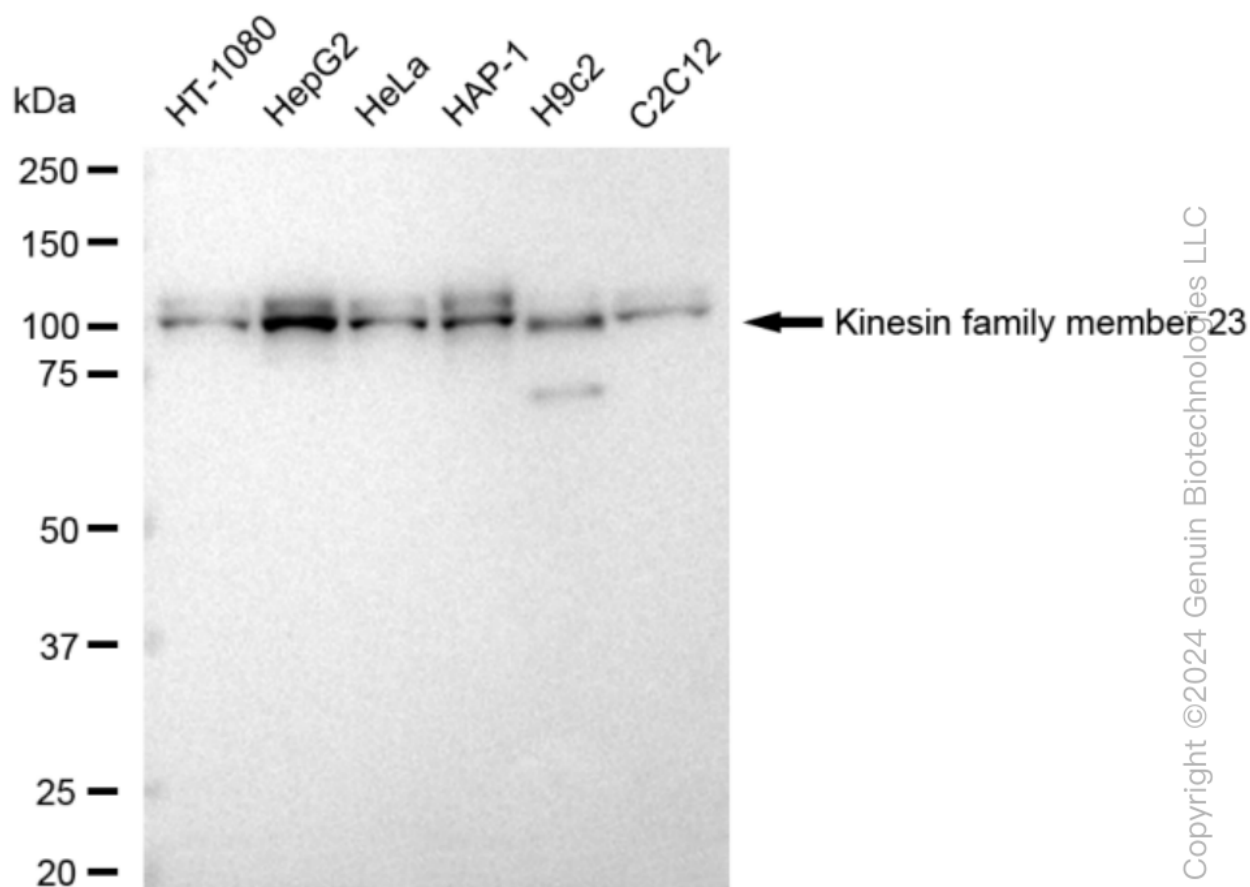
SALES@GENUINBIOTECH.COM
FAX: +1-540-855-7041

WWW.GENUINBIOTECH.COM

KD-Validated Anti-Kinesin family member 23 Recombinant Rabbit Monoclonal Antibody

PAGE 3

abundance based on laser Intensity and smart gain: High. Scale bar: 20 μ m.



Western blotting analysis using anti-Kinesin family member 23 antibody (Cat#61678). Total cell lysates (30 μ g) from various cell lines were loaded and separated by SDS-PAGE. The blot was incubated with anti-Kinesin family member 23 antibody (Cat#61678, 1:5,000) and HRP-conjugated goat anti-rabbit secondary antibody (Cat#201, 1:20,000) respectively. Image was developed using FeQ™ ECL Substrate Kit (Cat#226).

SUPPORT

SUPPORT@GENUINBIOTECH.COM
TEL: +1-540-855-7041

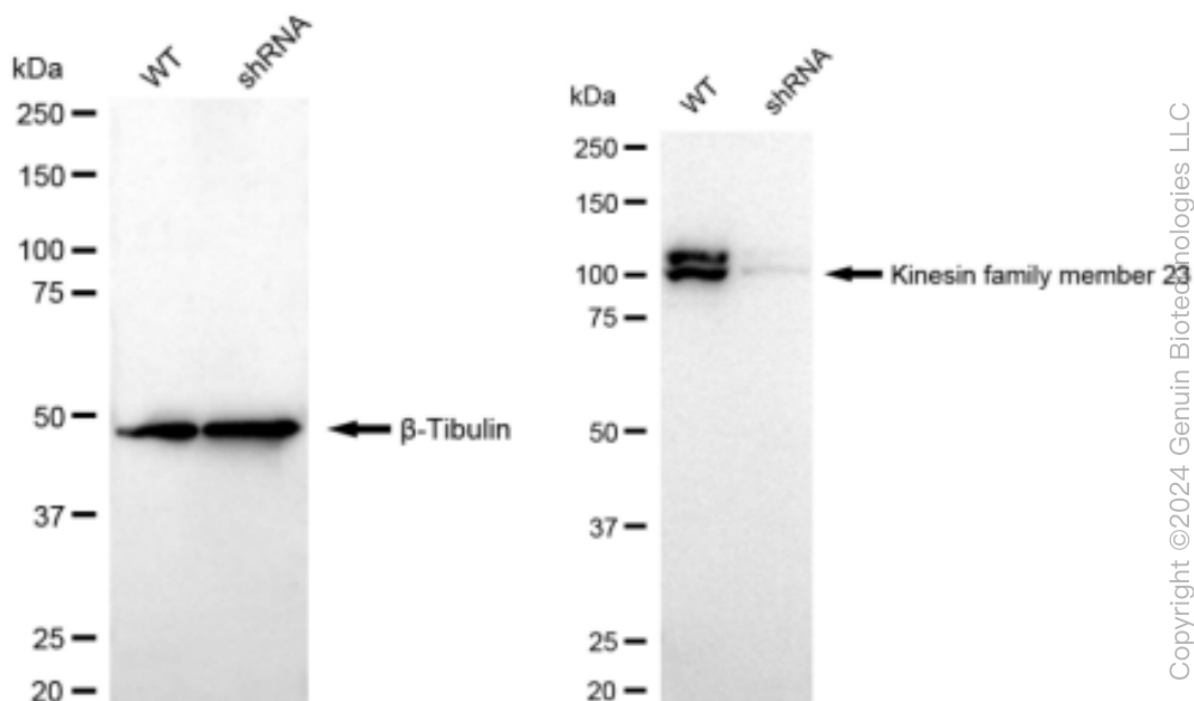
ORDERS

SALES@GENUINBIOTECH.COM
FAX: +1-540-855-7041

WWW.GENUINBIOTECH.COM

KD-Validated Anti-Kinesin family member 23 Recombinant Rabbit Monoclonal Antibody

PAGE 4



Western blotting analysis using anti-Kinesin family member 23 antibody (Cat#61678). Kinesin family member 23 expression in wild type (WT) and Kinesin family member 23 shRNA knockdown (KD) HeLa cells with 30 μ g of total cell lysates. β -Tubulin serves as a loading control. The blot was incubated with anti-Kinesin family member 23 antibody (Cat#61678, 1:5,000) and HRP-conjugated goat anti-rabbit secondary antibody (Cat#201, 1:20,000) respectively. Image was developed using FeQ™ ECL Substrate Kit (Cat#226).

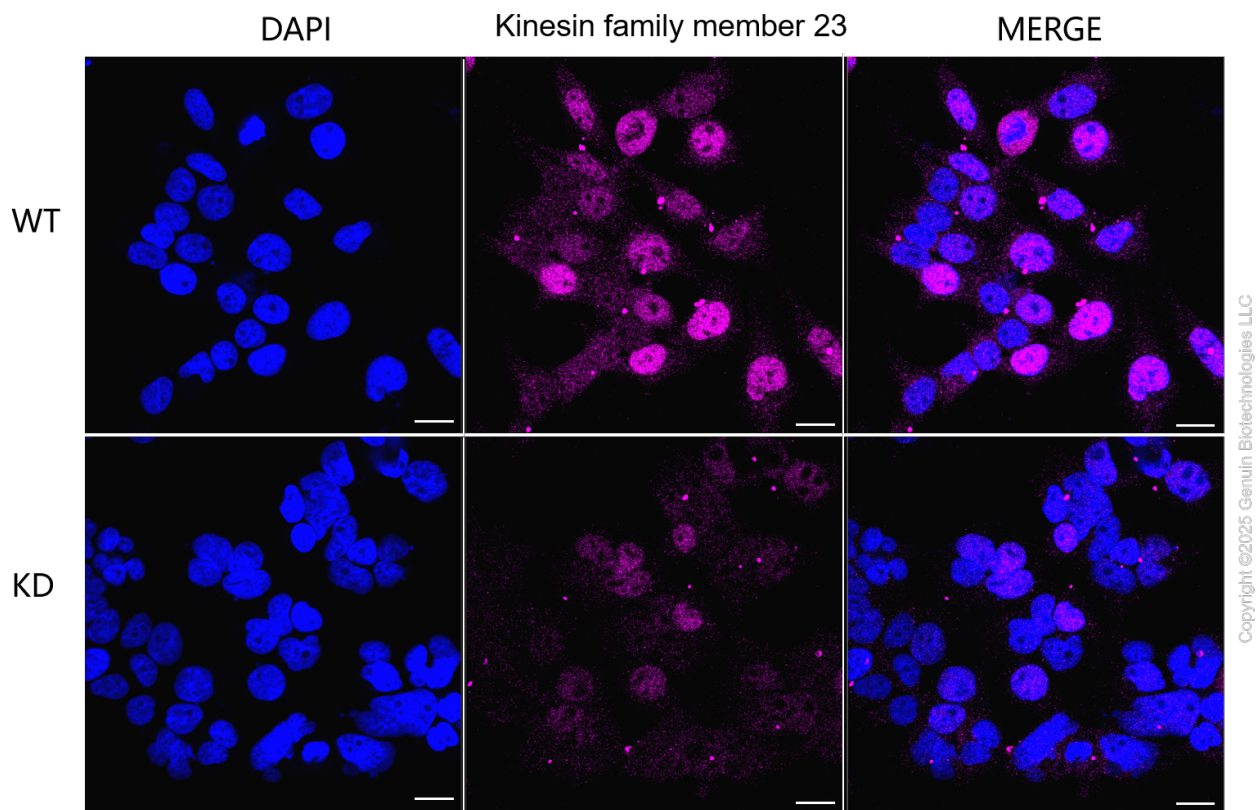
SUPPORT

SUPPORT@GENUINBIOTECH.COM
TEL: +1-540-855-7041

ORDERS

SALES@GENUINBIOTECH.COM
FAX: +1-540-855-7041

WWW.GENUINBIOTECH.COM



Immunocytochemical staining of HeLa cells using anti-Kinesin family member 23 antibody (Cat#61678, 1:1,000), Top panel: wild-type (WT); Bottom panel: Kinesin family member 23 shRNA knockdown (KD). Nuclei were stained blue with DAPI; Kinesin family member 23 was stained magenta with Alexa Fluor® 647. Scale bar, 20 μ m. Permeabilization: Triton.