

KD-Validated Anti-cleaved Caspase-9 Recombinant Rabbit Monoclonal Antibody



Catalog #: 61679

Aliases

CASP9; Caspase 9; ICE-LAP6; APAF-3; MCH6; PPP1R56; Caspase 9, Apoptosis-Related Cysteine Peptidase; Protein Phosphatase 1, Regulatory Subunit 56; ICE-Like Apoptotic Protease 6; Caspase-9; Caspase 9, Apoptosis-Related Cysteine Protease; Apoptotic Protease Activating Factor 3; Apoptotic Protease-Activating Factor 3; Apoptotic Protease MCH-6; Apoptotic Protease Mch-6; EC 3.4.22.62; CASP-9; APAF3

Background

Gene Name: CASP9

NCBI Gene Entry: [842](#)

UniProt Entry: [P55211](#)

Application Information

Molecular Weight: Predicted, 35,46 kDa, observed, 35,46 kDa

Clonality: Rabbit monoclonal antibody

Clone ID: 23GB725

Species Reactivity: Human, mouse

Applications Tested: Western blotting (WB), flow cytometry (FCM), immunocytochemistry (IC)

Immunogen

A synthesized peptide derived from human CASP9

Isotype

Rabbit IgG

Storage Buffer

Supplied in PBS (pH 7.4) containing 50% glycerol, and 0.02% sodium azide.

Storage

Store at -20 °C for one year.

Recommended Dilutions

Western Blotting (WB): 1:1,000-1:2,500

Flow Cytometry (FCM): 1:2,000

Immunocytochemistry (IC): 1:100-1:1,000

SUPPORT

SUPPORT@GENUINBIOTECH.COM
TEL: +1-540-855-7041

ORDERS

SALES@GENUINBIOTECH.COM
FAX: +1-540-855-7041

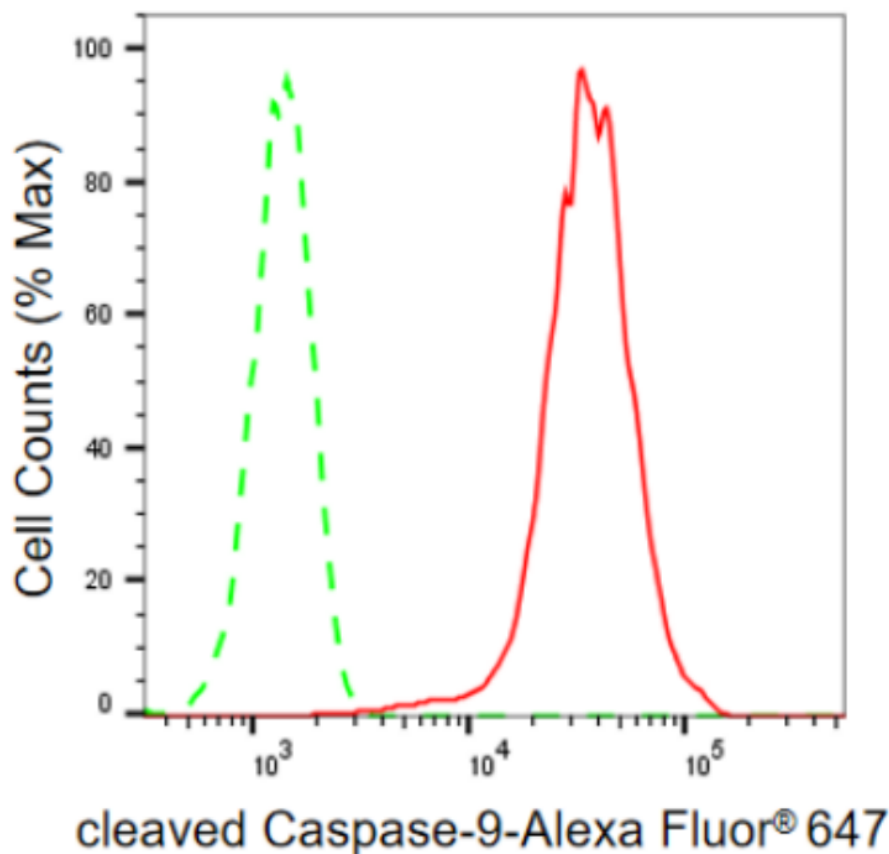
WWW.GENUINBIOTECH.COM

KD-Validated Anti-cleaved Caspase-9 Recombinant Rabbit Monoclonal Antibody

PAGE 2

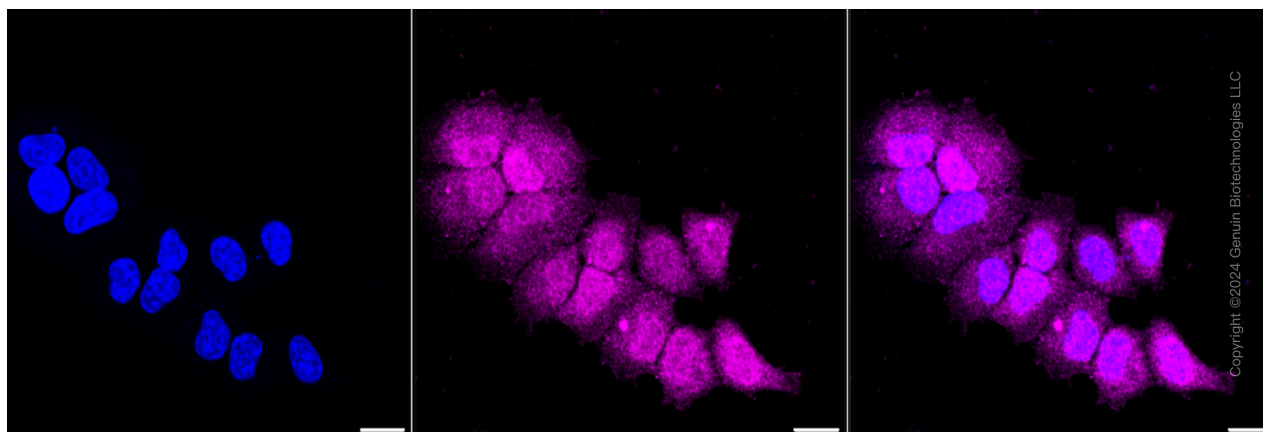
Note: This product is for research use only.

Validation Data



Copyright ©2024 Genuin Biotechnologies LLC

Flow cytometric analysis of cleaved Caspase-9 expression in HepG2 cells using cleaved Caspase-9 antibody (Cat#61679, 1:2,000). Green, isotype control; red, cleaved Caspase-9.



Immunocytochemical staining of HepG2 cells with cleaved Caspase-9 antibody (Cat#61679, 1:1,000). Nuclei were stained blue with DAPI; cleaved Caspase-9 was stained magenta with Alexa Fluor® 647. Images were taken using Leica stellaris 5. Protein abundance based on laser Intensity

SUPPORT

SUPPORT@GENUINBIOTECH.COM
TEL: +1-540-855-7041

ORDERS

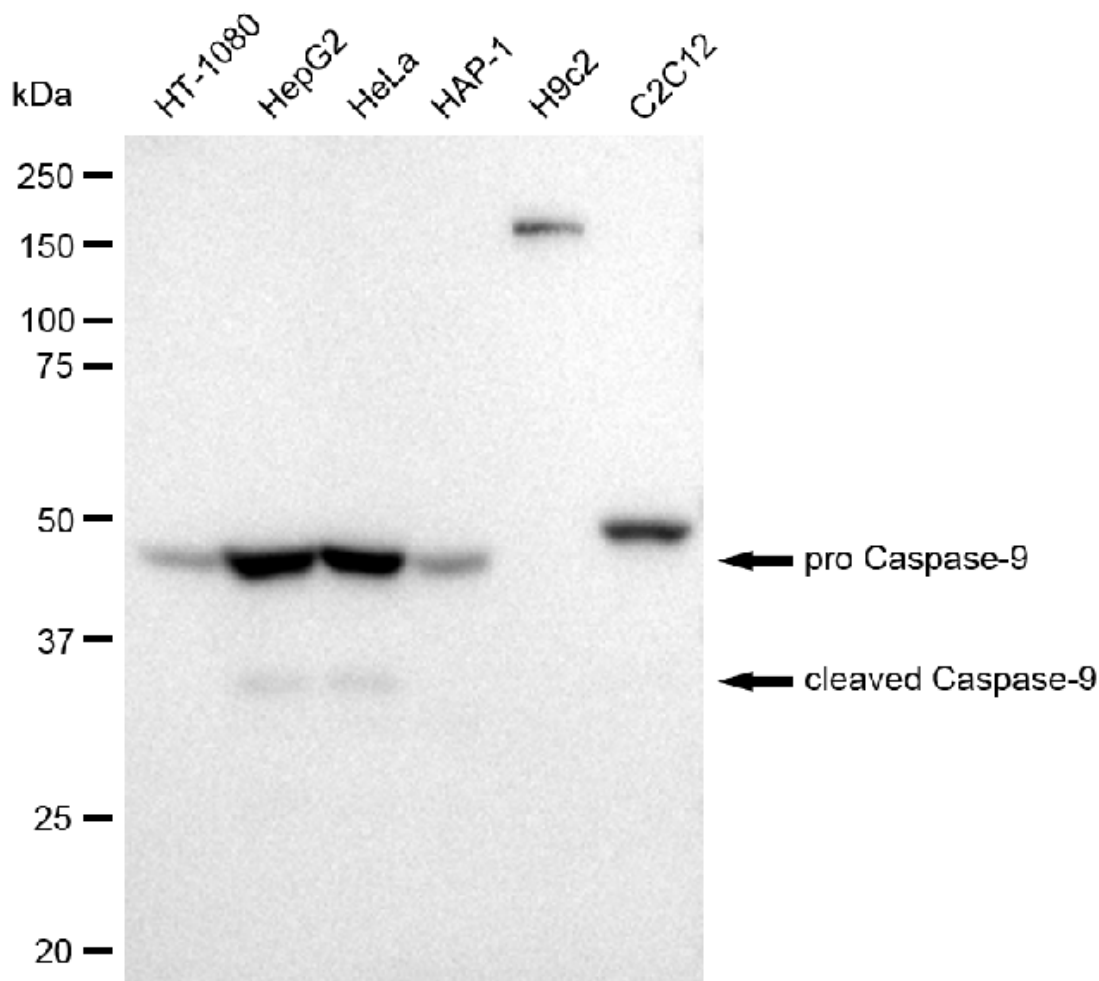
SALES@GENUINBIOTECH.COM
FAX: +1-540-855-7041

WWW.GENUINBIOTECH.COM

KD-Validated Anti-cleaved Caspase-9 Recombinant Rabbit Monoclonal Antibody

PAGE 3

and smart gain: Medium. Scale bar: 20 μ m.



Copyright ©2024 Genuin Biotechnologies LLC

Western blotting analysis using anti-cleaved Caspase-9 antibody (Cat#61679). Total cell lysates (30 μ g) from various cell lines were loaded and separated by SDS-PAGE. The blot was incubated with anti-cleaved Caspase-9 antibody (Cat#61679, 1:5,000) and HRP-conjugated goat anti-rabbit secondary antibody (Cat#201, 1:50,000) respectively. Image was developed using FeQ™ ECL Substrate Kit (Cat#226).

SUPPORT

SUPPORT@GENUINBIOTECH.COM
TEL: +1-540-855-7041

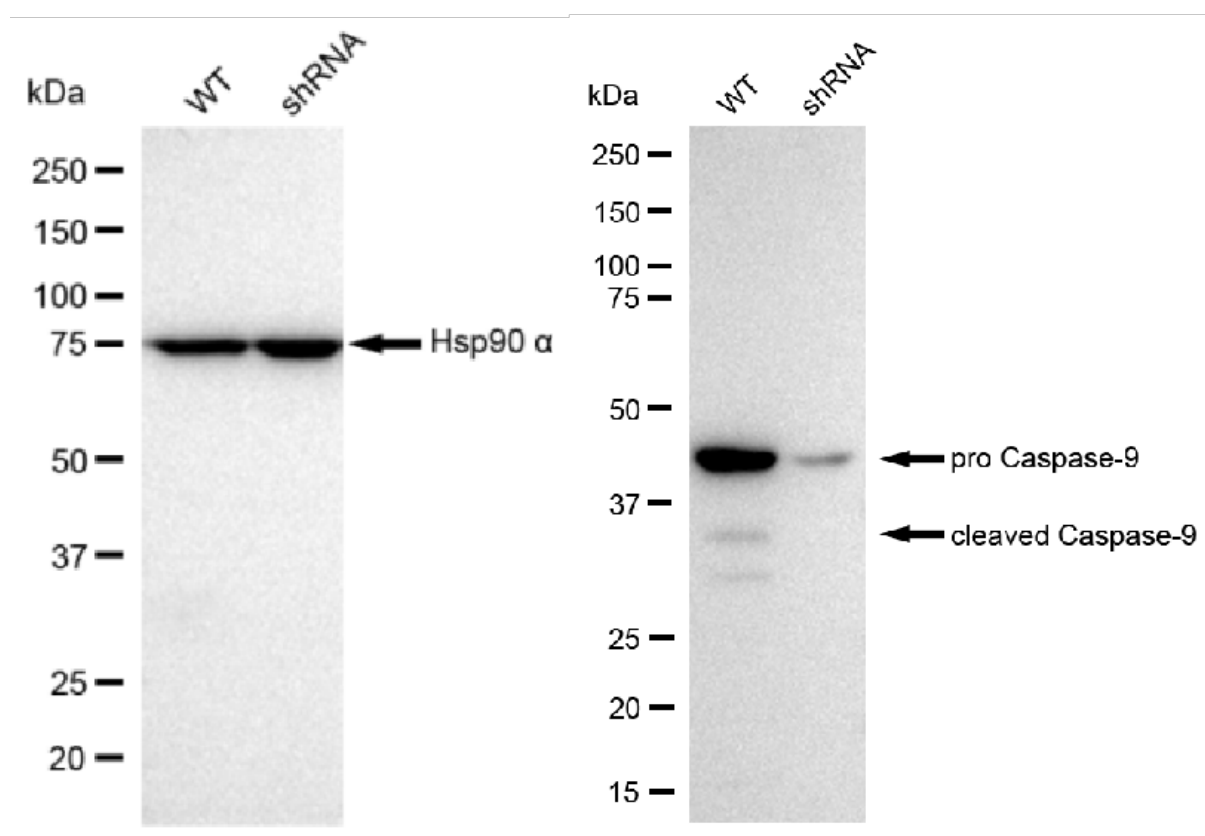
ORDERS

SALES@GENUINBIOTECH.COM
FAX: +1-540-855-7041

WWW.GENUINBIOTECH.COM

KD-Validated Anti-cleaved Caspase-9 Recombinant Rabbit Monoclonal Antibody

PAGE 4



Western blotting analysis using anti-cleaved Caspase-9 antibody (Cat#61679). Cleaved Caspase-9 expression in wild type (WT) and cleaved Caspase-9 shRNA knockdown (KD) HeLa cells with 30 μ g of total cell lysates. Hsp90 α serves as a loading control. The blot was incubated with anti-cleaved Caspase-9 antibody (Cat#61679, 1:5,000) and HRP-conjugated goat anti-rabbit secondary antibody (Cat#201, 1:50,000) respectively. Image was developed using FeQ™ ECL Substrate Kit (Cat#226).

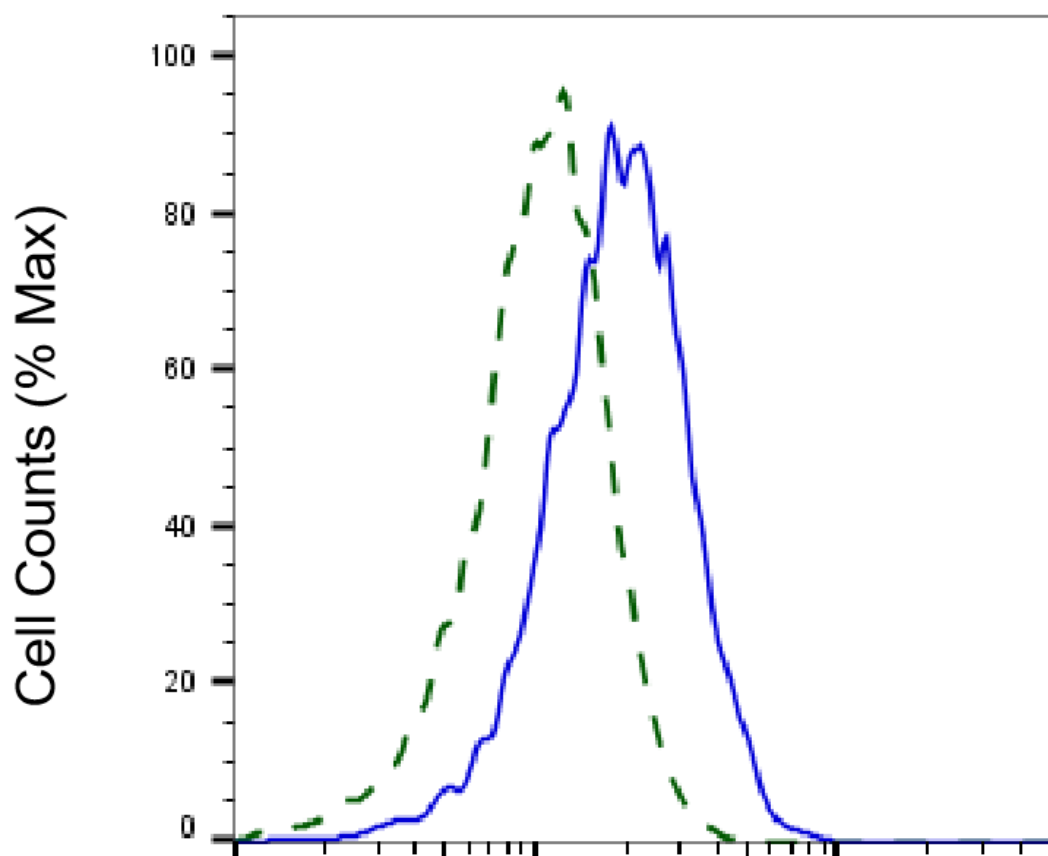
SUPPORT

SUPPORT@GENUINBIOTECH.COM
TEL: +1-540-855-7041

ORDERS

SALES@GENUINBIOTECH.COM
FAX: +1-540-855-7041

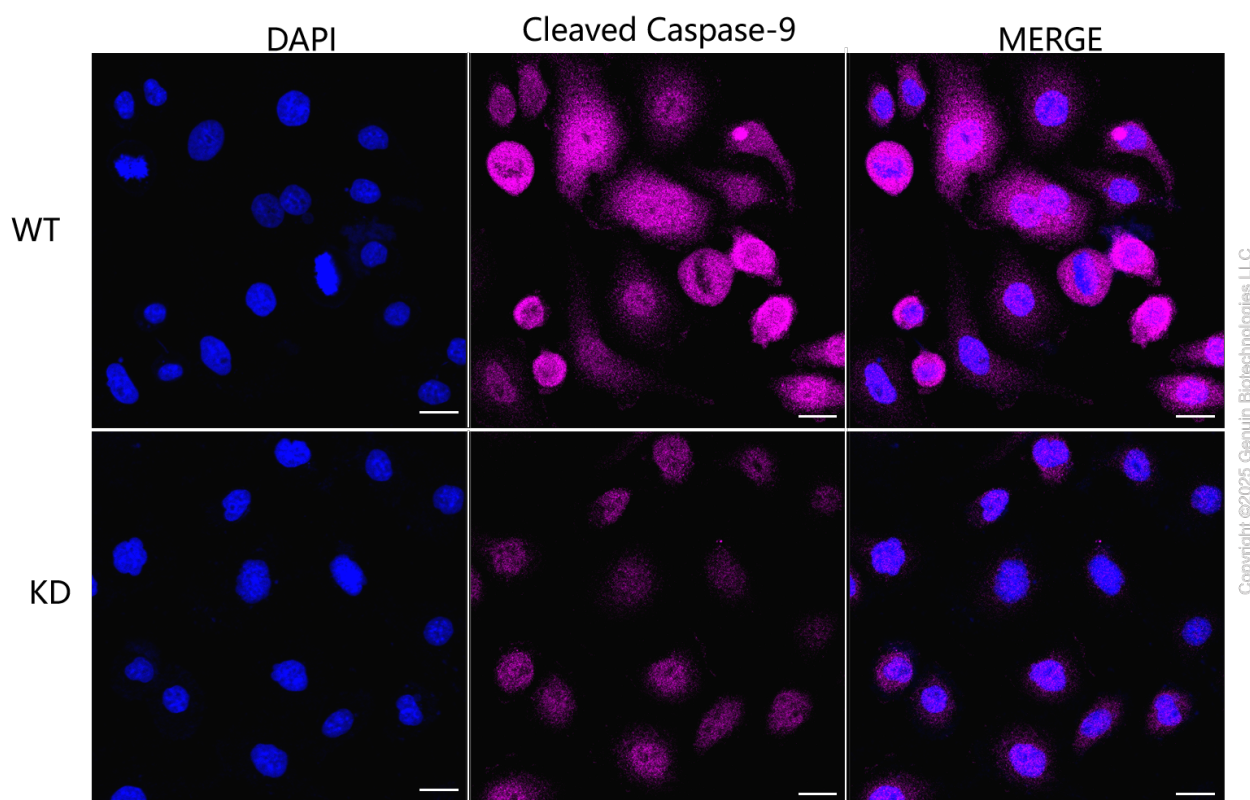
WWW.GENUINBIOTECH.COM



Copyright ©2025 Genuin Biotechnologies LLC

cleaved Caspase-9-Alexa Fluor® 647

Validation of cleaved Caspase-9 knockdown using flow cytometry. Wild-type(WT, Blue) and knockdown(KD, Green) HeLa cells were stained with anti-cleaved Caspase-9 antibody (Cat#61679, 1:2,000) and analyzed using BD flow cytometer.



Immunocytochemical staining of HeLa cells using anti-Cleaved Caspase-9 antibody (Cat#61679, 1:1,000), Top panel: wild-type (WT); Bottom panel: Cleaved Caspase-9 shRNA knockdown (KD). Nuclei were stained blue with DAPI; Cleaved Caspase-9 was stained magenta with Alexa Fluor® 647. Scale bar, 20 μ m. Permeabilization: Triton.