

# KD-Validated Anti-Ubiquitin Specific Peptidase 11 Recombinant Rabbit Monoclonal Antibody



**Catalog #: 61680**

## Aliases

USP11; Ubiquitin Specific Peptidase 11; UHX1; Ubiquitin Carboxyl-Terminal Hydrolase 11; Deubiquitinating Enzyme 11 3 4  
Ubiquitin Thioesterase 11; Ubiquitin Carboxyl-Terminal Hydrolase, X-Linked; Ubiquitin-Specific Processing Protease 11; Ubiquitin-Specific-Processing Protease 11; Ubiquitin Specific Protease 11; Ubiquitin Thiolesterase 11; EC 3.4.19.12; EC 3.1.2.15

## Background

Gene Name: USP11  
NCBI Gene Entry: [8237](#)  
UniProt Entry: [P51784](#)

## Application Information

Molecular Weight: Predicted, 110 kDa, observed, 110 kDa  
Clonality: Rabbit monoclonal antibody  
Clone ID: 25GB3310  
Species Reactivity: Human, mouse  
Applications Tested: Western blotting (WB), flow cytometry (FCM), immunocytochemistry (IC)

## Immunogen

A synthesized peptide derived from human USP11

## Isotype

Rabbit IgG

## Storage Buffer

Supplied in PBS (pH 7.4) containing 50% glycerol, and 0.02% sodium azide.

## Storage

Store at -20 °C for one year.

## Recommended Dilutions

Western blotting (WB): 1:1,000-1:5,000  
Flow Cytometry (FCM): 1:2,000  
Immunocytochemistry (IC): 1:100-1:1,000

---

### SUPPORT

SUPPORT@GENUINBIOTECH.COM  
TEL: +1-540-855-7041

### ORDERS

SALES@GENUINBIOTECH.COM  
FAX: +1-540-855-7041

[WWW.GENUINBIOTECH.COM](http://WWW.GENUINBIOTECH.COM)

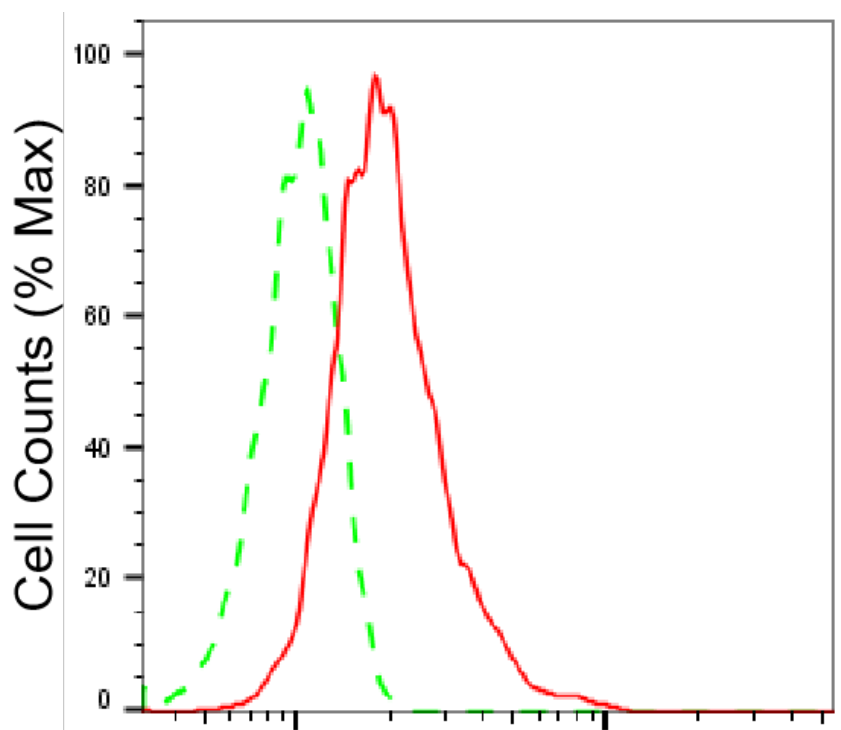


# KD-Validated Anti-Ubiquitin Specific Peptidase 11 Recombinant Rabbit Monoclonal Antibody

PAGE 2

**Note:** This product is for research use only.

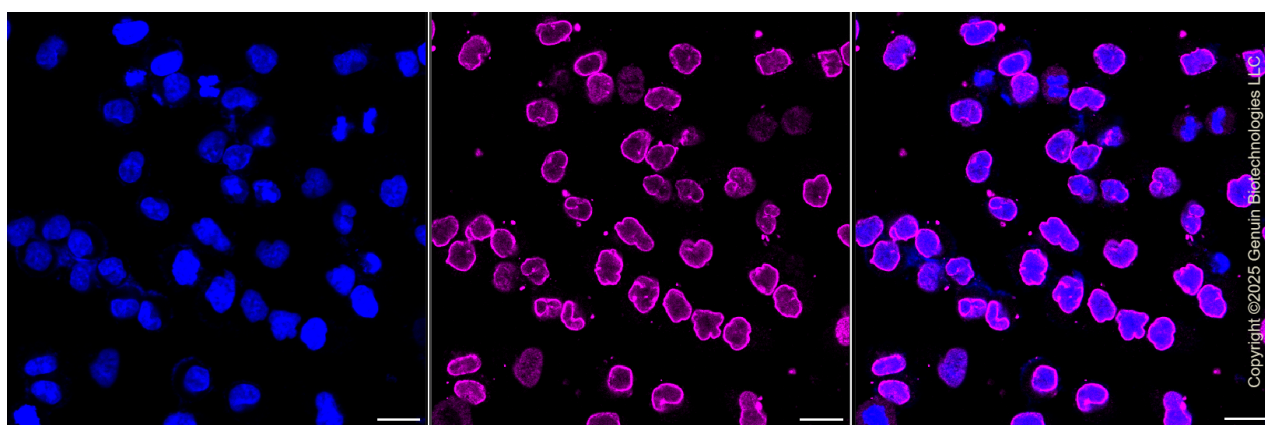
## Validation Data



Copyright ©2025 Genuin Biotechnologies LLC

## Ubiquitin specific peptidase 11-Alexa Fluor® 647

Flow cytometric analysis of Ubiquitin specific peptidase 11 expression in HeLa cells using anti-Ubiquitin specific peptidase 11 antibody (Cat#61680, 1:2,000). Green, isotype control; red, Ubiquitin specific peptidase 11.



Copyright ©2025 Genuin Biotechnologies LLC

Immunocytochemical staining of HeLa cells with anti-Ubiquitin specific peptidase 11 antibody (Cat#61680, 1:1,000). Nuclei were stained blue with DAPI; Ubiquitin specific peptidase 11 was stained magenta with Alexa Fluor® 647. Images were taken using Leica stellaris 5. Protein

### SUPPORT

SUPPORT@GENUINBIOTECH.COM  
TEL: +1-540-855-7041

### ORDERS

SALES@GENUINBIOTECH.COM  
FAX: +1-540-855-7041

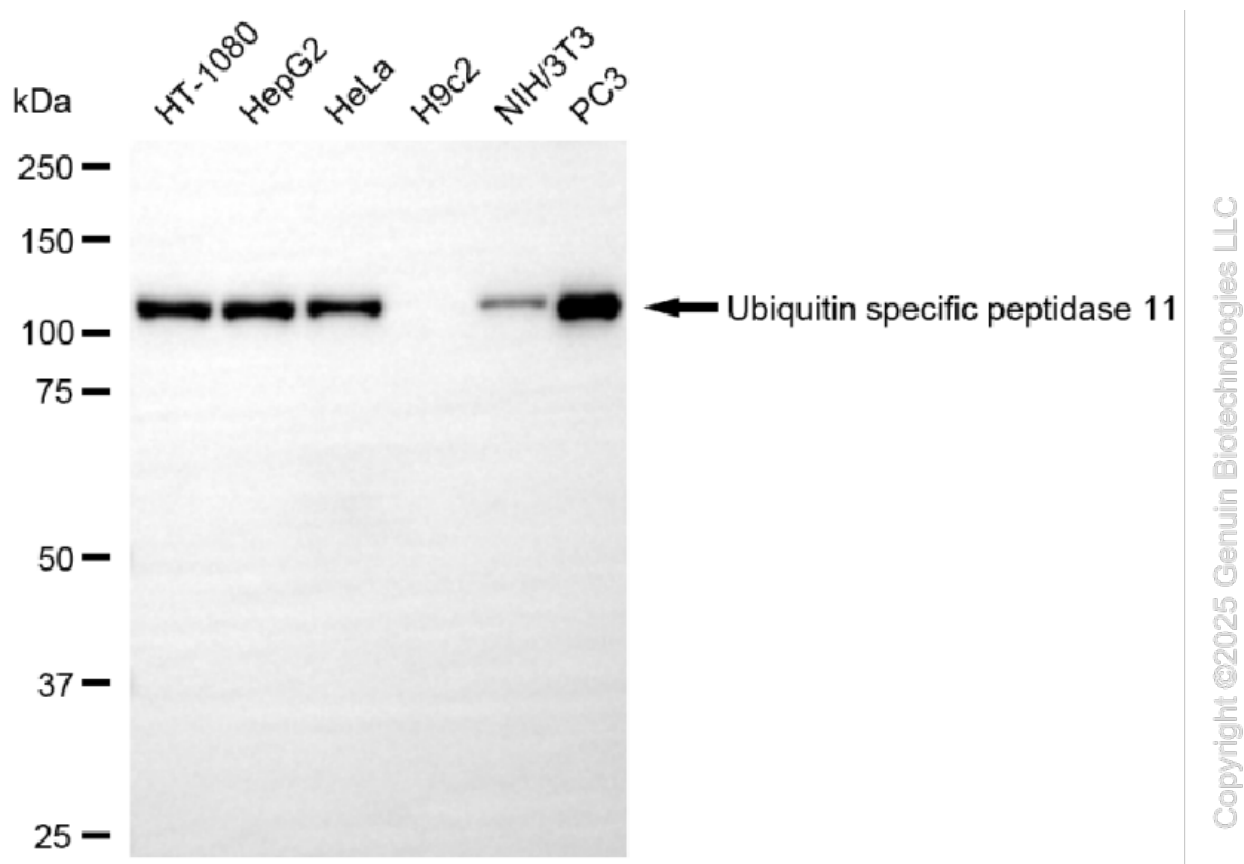
WWW.GENUINBIOTECH.COM



## KD-Validated Anti-Ubiquitin Specific Peptidase 11 Recombinant Rabbit Monoclonal Antibody

PAGE 3

abundance based on laser Intensity and smart gain: High. Scale bar, 20  $\mu$ m.



Western blotting analysis using anti-ubiquitin specific peptidase 11 antibody (Cat#61680). Total cell lysates (30  $\mu$ g) from various cell lines were loaded and separated by SDS-PAGE. The blot was incubated with anti-ubiquitin specific peptidase 11 antibody (Cat#61680, 1:5,000) and HRP-conjugated goat anti-rabbit secondary antibody (Cat#201, 1:20,000) respectively. Image was developed using NaQ™ ECL Substrate Kit (Cat#716).

### SUPPORT

SUPPORT@GENUINBIOTECH.COM  
TEL: +1-540-855-7041

### ORDERS

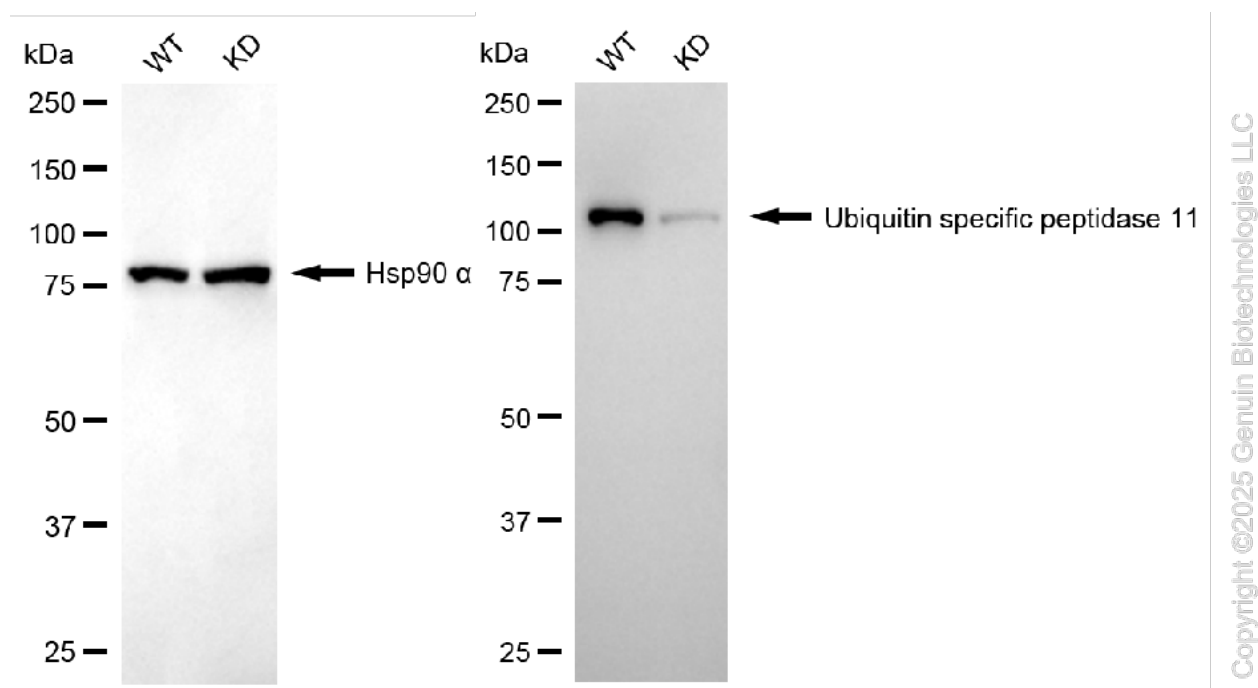
SALES@GENUINBIOTECH.COM  
FAX: +1-540-855-7041

WWW.GENUINBIOTECH.COM



## KD-Validated Anti-Ubiquitin Specific Peptidase 11 Recombinant Rabbit Monoclonal Antibody

PAGE 4



Western blotting analysis using anti-ubiquitin specific peptidase 11 antibody (Cat#61680). Ubiquitin specific peptidase 11 expression in wild type (WT) and ubiquitin specific peptidase 11 (USP11) knockdown (KD) HSHC cells with 20 µg of total cell lysates. Hsp90 α serves as a loading control. The blot was incubated with anti-ubiquitin specific peptidase 11 antibody (Cat#61680, 1:5,000) and HRP-conjugated goat anti-rabbit secondary antibody (Cat#201, 1:20,000) respectively. Image was developed using NaQ™ ECL Substrate Kit (Cat#716).

### SUPPORT

SUPPORT@GENUINBIOTECH.COM  
TEL: +1-540-855-7041

### ORDERS

SALES@GENUINBIOTECH.COM  
FAX: +1-540-855-7041

[WWW.GENUINBIOTECH.COM](http://WWW.GENUINBIOTECH.COM)