

KD-Validated Anti-PPP2R5D Recombinant Rabbit Monoclonal Antibody



Catalog #: 61681

Aliases

PPP2R5D; Protein Phosphatase 2 Regulatory Subunit B'Delta; Serine/Threonine-Protein Phosphatase 2A 56 KDa Regulatory Subunit Delta Isoform; B56delta; B56D; Protein Phosphatase 2, Regulatory Subunit B (B56), Delta Isoform; PP2A B Subunit Isoform PR61-Delta; PP2A B Subunit Isoform B56-Delta; PP2A B Subunit Isoform B'-Delta; PP2A B Subunit Isoform R5-Delta; MRD35; HJS1

Background

Gene Name: PPP2R5D

NCBI Gene Entry: [5528](#)

UniProt Entry: [Q14738](#)

Application Information

Molecular Weight: Predicted, 70 kDa; observed, 60-70 kDa

Clonality: Rabbit monoclonal antibody

Clone ID: 25GB3315

Species Reactivity: Human, mouse, rat

Applications Tested: Western blotting (WB), flow cytometry (FCM), immunocytochemistry (IC)

Immunogen

A synthesized peptide derived from human PPP2R5D

Isotype

Rabbit IgG

Storage Buffer

Supplied in PBS (pH 7.4) containing 50% glycerol, and 0.02% sodium azide.

Storage

Store at -20 °C for one year.

Recommended Dilutions

Western blotting (WB): 1:1,000-1:5,000

Flow Cytometry (FCM): 1:2,000

Immunocytochemistry (IC): 1:100-1:1,000

SUPPORT

SUPPORT@GENUINBIOTECH.COM
TEL: +1-540-855-7041

ORDERS

SALES@GENUINBIOTECH.COM
FAX: +1-540-855-7041

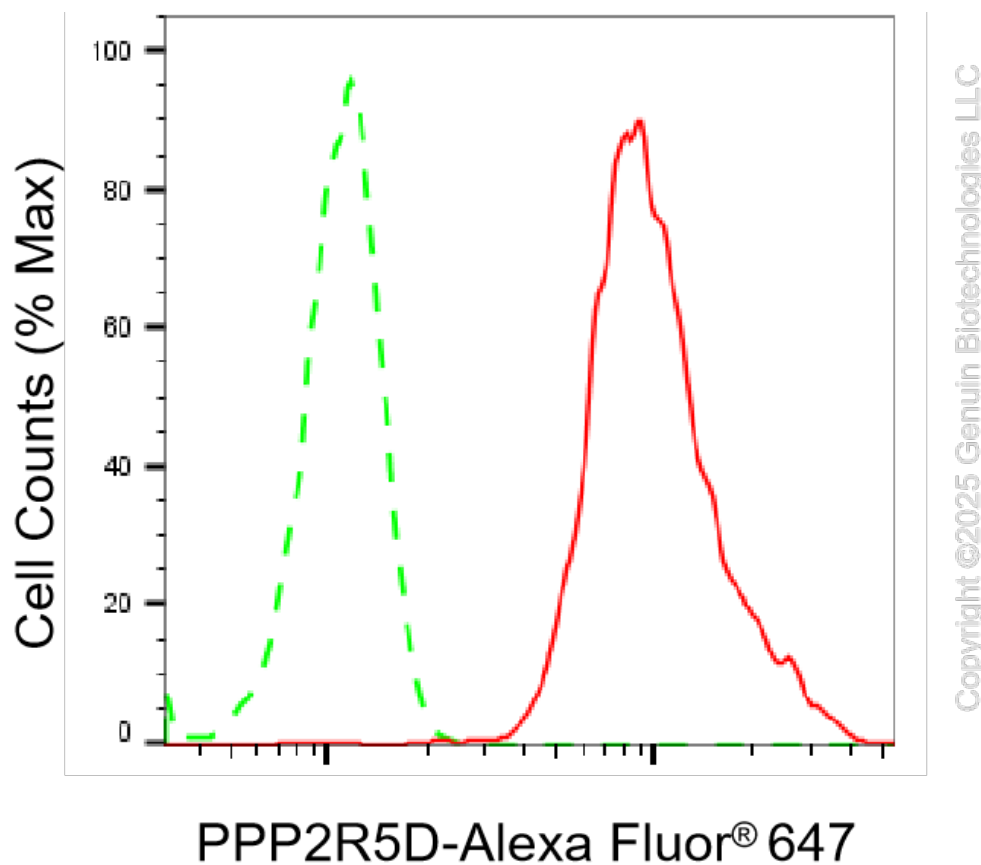
WWW.GENUINBIOTECH.COM

KD-Validated Anti-PPP2R5D Recombinant Rabbit Monoclonal Antibody

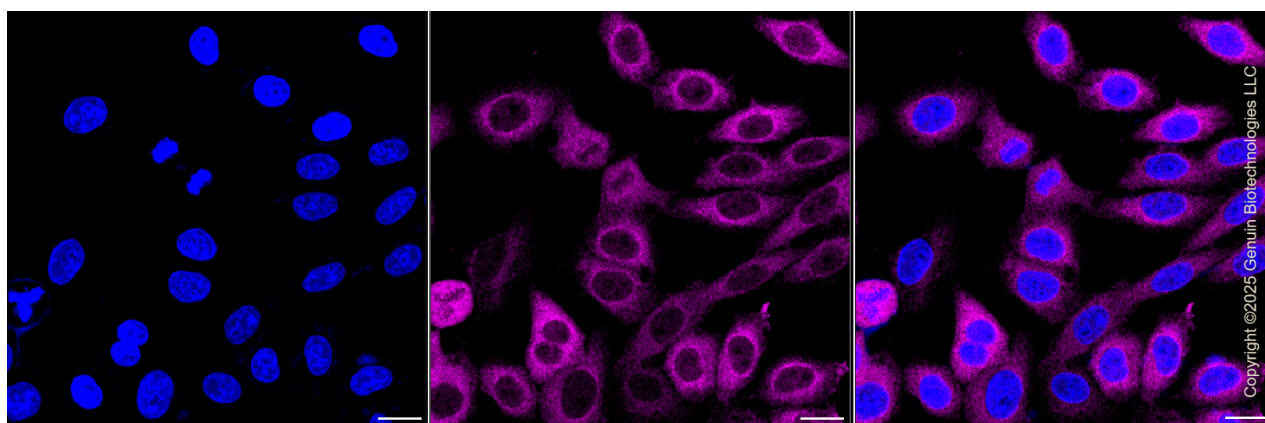
PAGE 2

Note: This product is for research use only.

Validation Data



Flow cytometric analysis of PPP2R5D expression in HepG2 cells using anti-PPP2R5D antibody (Cat#61681, 1:2,000). Green, isotype control; red, PPP2R5D.



Immunocytochemical staining of HepG2 cells with PPP2R5D antibody (Cat#61681, 1:1,000). Nuclei were stained blue with DAPI; PPP2R5D was stained magenta with Alexa Fluor® 647. Images were taken using Leica stellaris 5. Protein abundance based on laser Intensity and smart gain: High. Scale bar, 20 µm.

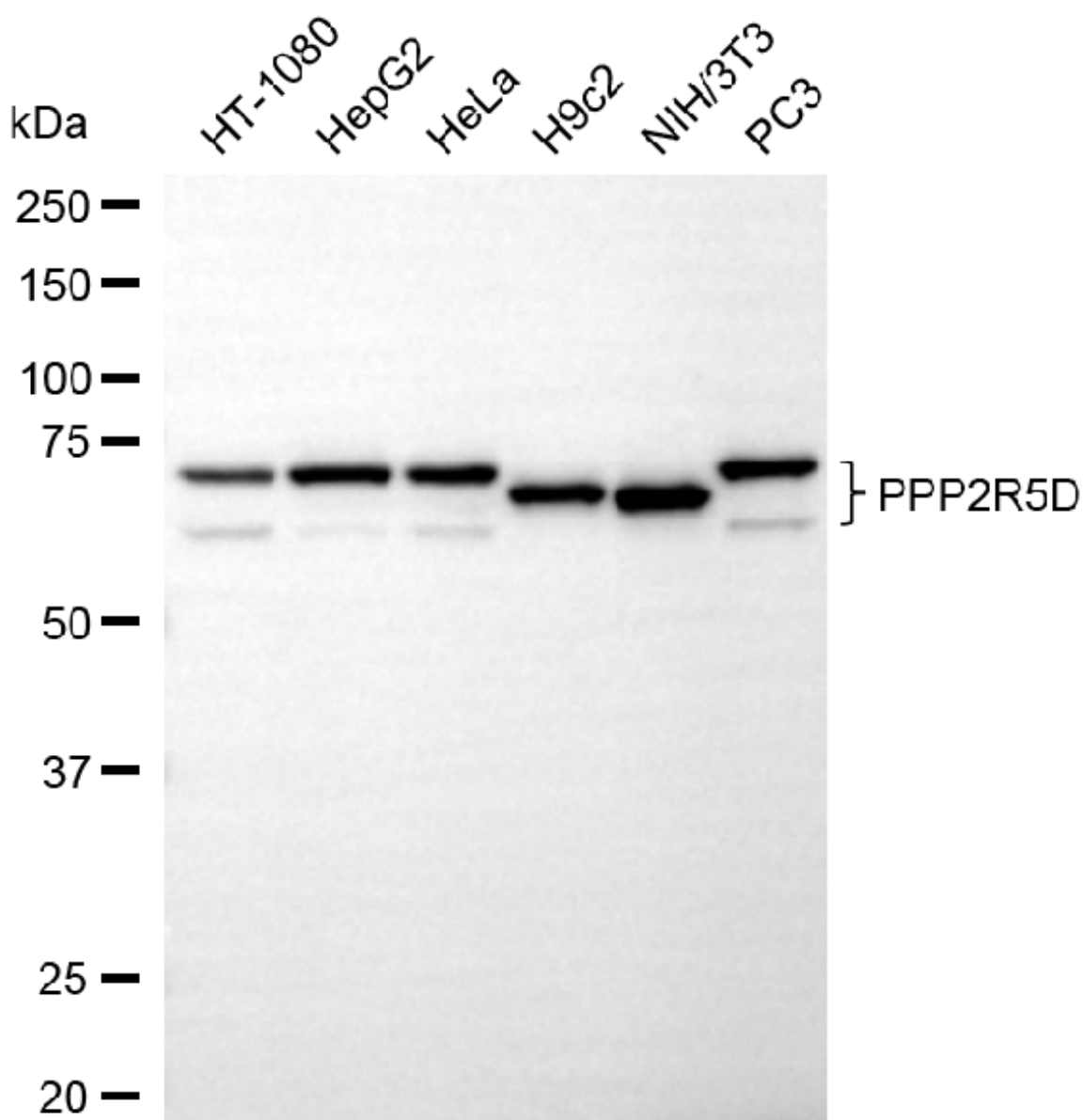
SUPPORT

SUPPORT@GENUINBIOTECH.COM
TEL: +1-540-855-7041

ORDERS

SALES@GENUINBIOTECH.COM
FAX: +1-540-855-7041

WWW.GENUINBIOTECH.COM



Copyright ©2025 Genuin Biotechnologies LLC

Western blotting analysis using anti-PPP2R5D antibody (Cat#61681). Total cell lysates (30 µg) from various cell lines were loaded and separated by SDS-PAGE. The blot was incubated with anti-PPP2R5D antibody (Cat#61681, 1:5,000) and HRP-conjugated goat anti-rabbit secondary antibody (Cat#201, 1:20,000) respectively. Image was developed using NaQ™ ECL Substrate Kit (Cat#716).

SUPPORT

SUPPORT@GENUINBIOTECH.COM
TEL: +1-540-855-7041

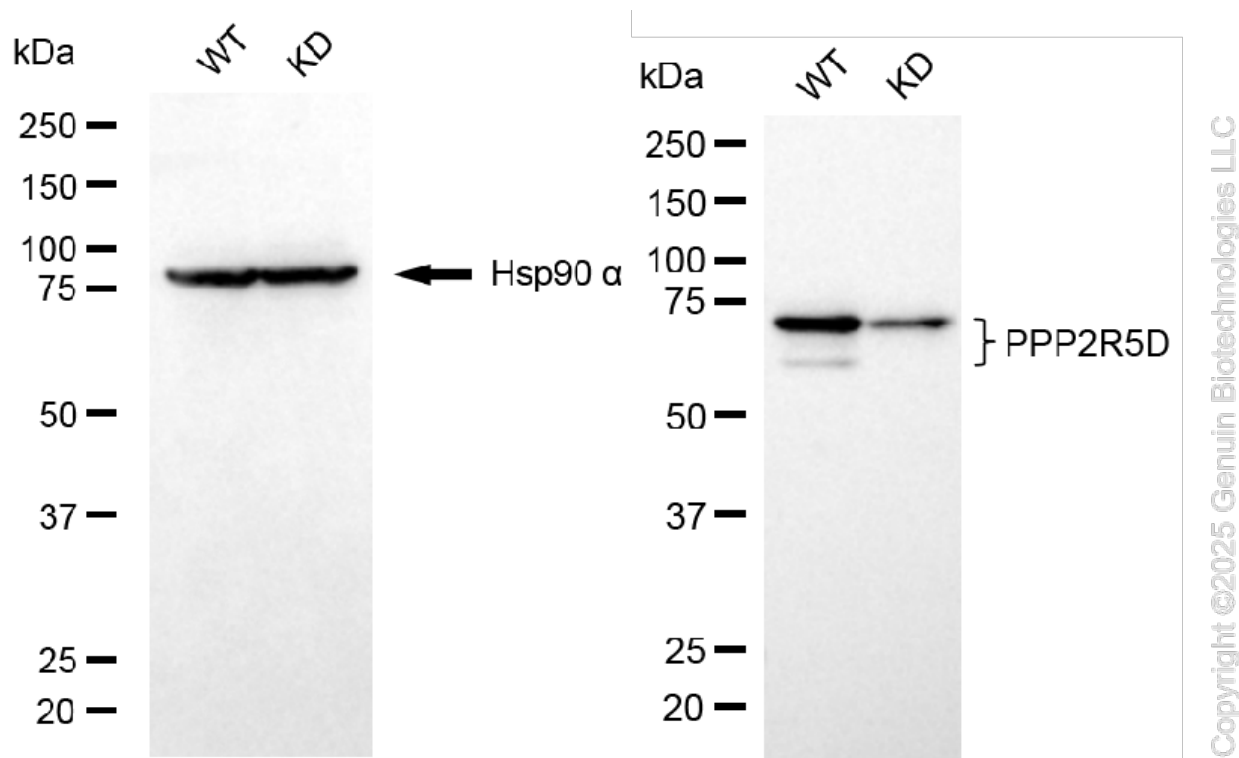
ORDERS

SALES@GENUINBIOTECH.COM
FAX: +1-540-855-7041

WWW.GENUINBIOTECH.COM

KD-Validated Anti-PPP2R5D Recombinant Rabbit Monoclonal Antibody

PAGE 4



Western blotting analysis using anti-PPP2R5D antibody (Cat#61681). PPP2R5D expression in wild type (WT) and PPP2R5D knockdown (KD) HSHC cells with 20 µg of total cell lysates. Hsp90 α serves as a loading control. The blot was incubated with anti-PPP2R5D antibody (Cat#61681, 1:5,000) and HRP-conjugated goat anti-rabbit secondary antibody (Cat#201, 1:20,000) respectively. Image was developed using NaQ™ ECL Substrate Kit (Cat#716).

SUPPORT

SUPPORT@GENUINBIOTECH.COM
TEL: +1-540-855-7041

ORDERS

SALES@GENUINBIOTECH.COM
FAX: +1-540-855-7041

WWW.GENUINBIOTECH.COM